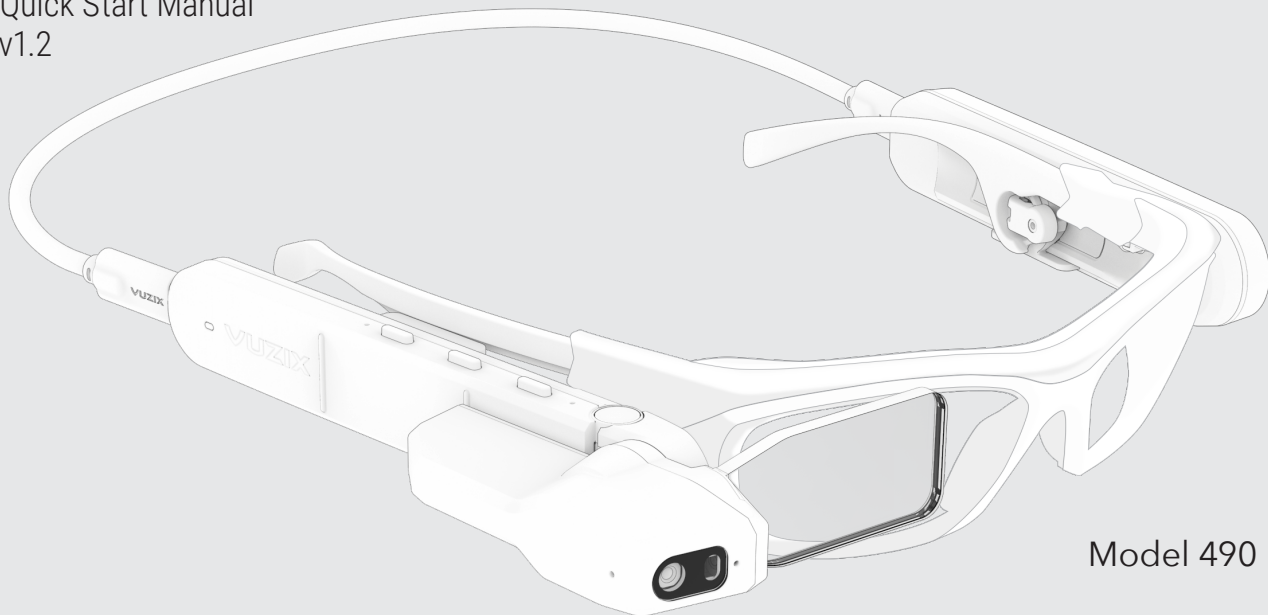


# M4000

Quick Start Manual  
v1.2

**VUZIX**<sup>®</sup>



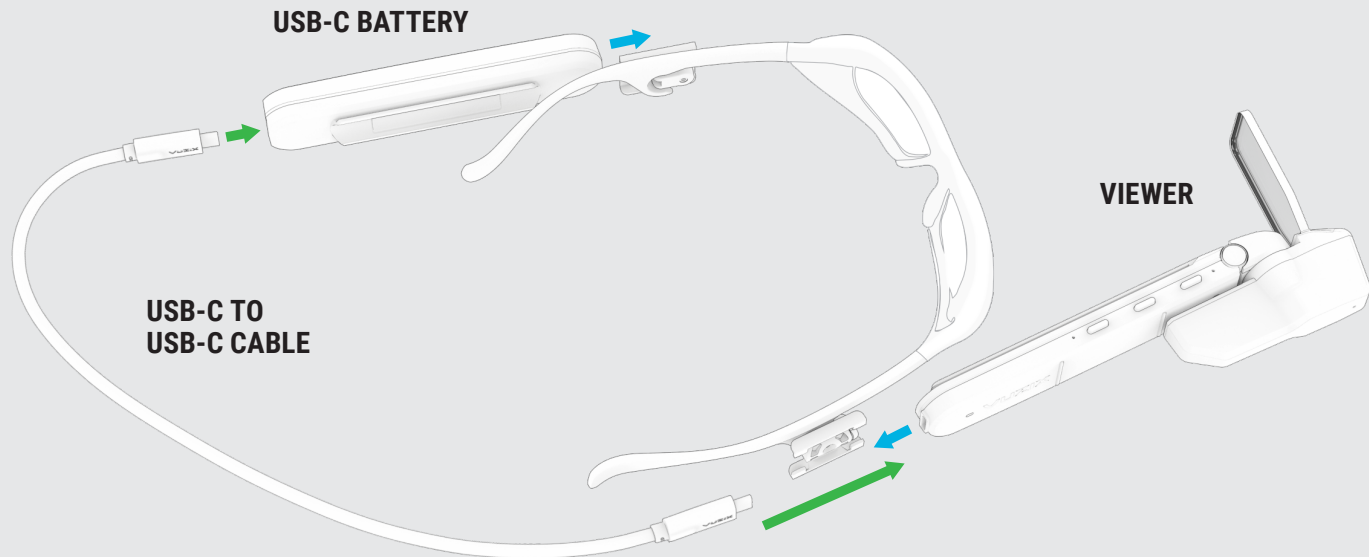
Model 490

## CONGRATULATIONS ON YOUR NEW VUZIX M4000 SMART GLASSES SYSTEM

Your M4000 Smart Glasses System is an ergonomically designed, wearable Android-based computer with Wi-Fi connectivity, voice-command functionality and HD camera – right out of the box, including:


- M4000 see-through viewer with adjustable waveguide display screen
- 1000 mAh USB-C power bank
- USB-A to USB-C power cable
- USB-C to USB-C viewer cable
- M-Series Safety Glasses viewer frames with rail mounts
- Hard case for storage
- Spare Waveguide
- Tinted window
- Safety & Quick Start Guide

## CHARGING FOR FIRST-TIME USE



Charge battery before use with a standard USB wall charger, wait until all three LEDs are solid.

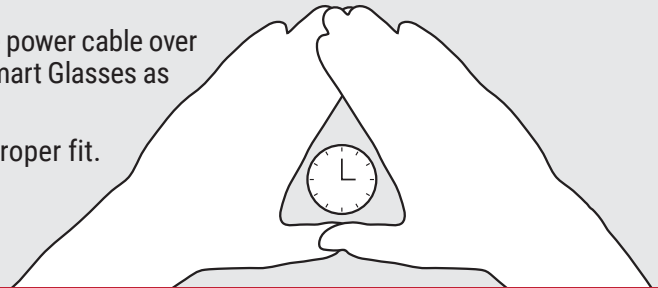
Can take up to two hours if the battery is fully empty.

 Assembling the M4000 mounting system

 Power to M4000 from Battery

## ASSEMBLING YOUR M4000 SMART GLASSES SYSTEM

1. Before attaching the viewer to either side of the smart glasses frame, determine your dominant eye for optimum use of M4000 capabilities
2. Attach viewer to your preferred side of the safety glasses by sliding the mounting rail onto the temple mount on the frames. Once properly fitted, the unit will be adjustable by sliding forward and backward, and rotating/tilting the the display.
3. Using the same mounting process, attach the on-frame battery onto the other side of the frames.
4. Plug the USB-C viewer cable into the viewer and the on frame battery (the viewer will automatically turn on).
5. When ready to wear your M4000 Smart Glasses, lift the power cable over your head to rest on your shoulders as you place the Smart Glasses as you would a pair of glasses.
6. Ear hooks and alternate nose pads are available for proper fit.

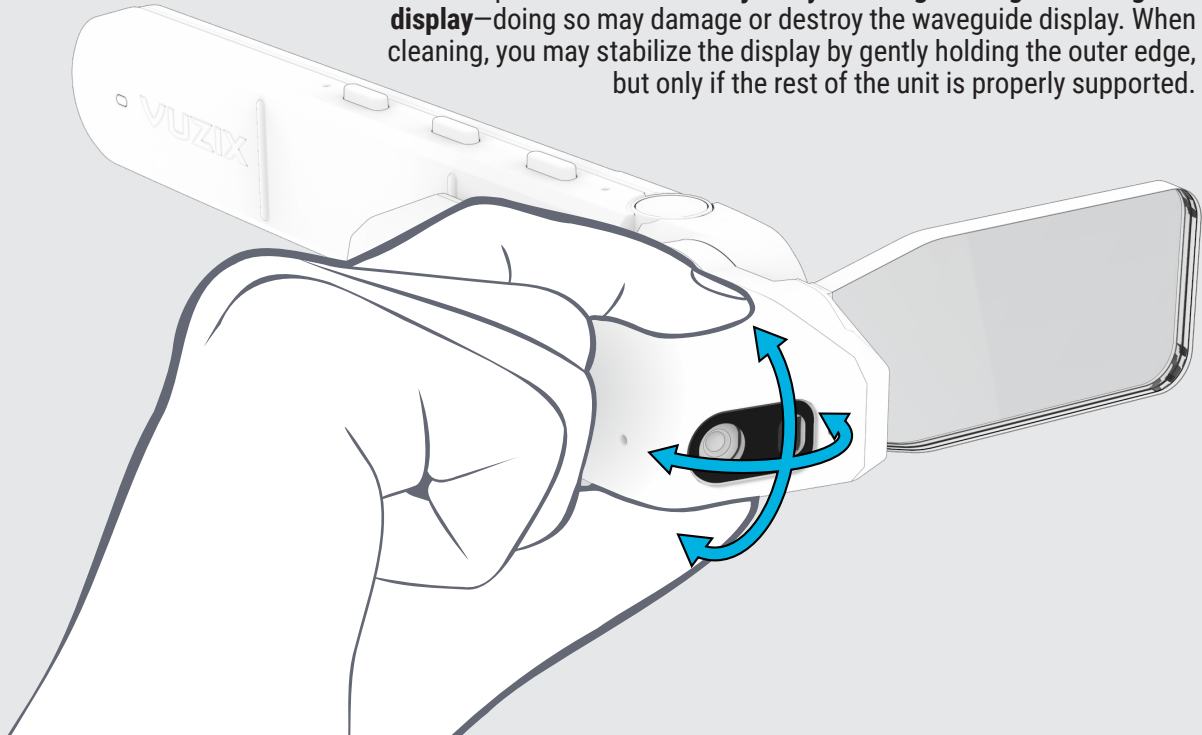


### DETERMINE YOUR DOMINANT EYE

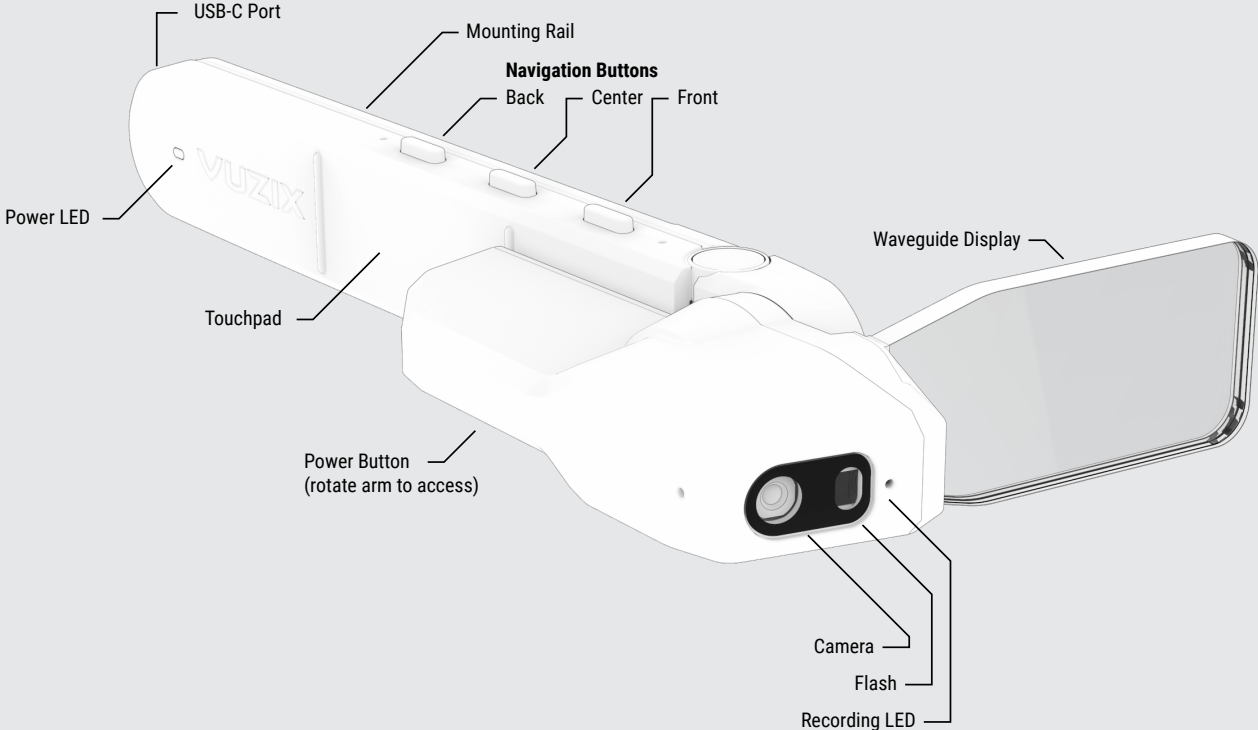
Extend your hands, placing them together to make a small triangle between your thumbs and knuckle. Keeping both eyes open, center a nearby object inside the triangle. Close each eye one at a time. Notice how the object moves out of view when one eye is closed? When the object remains in view, the open eye is your dominant eye.

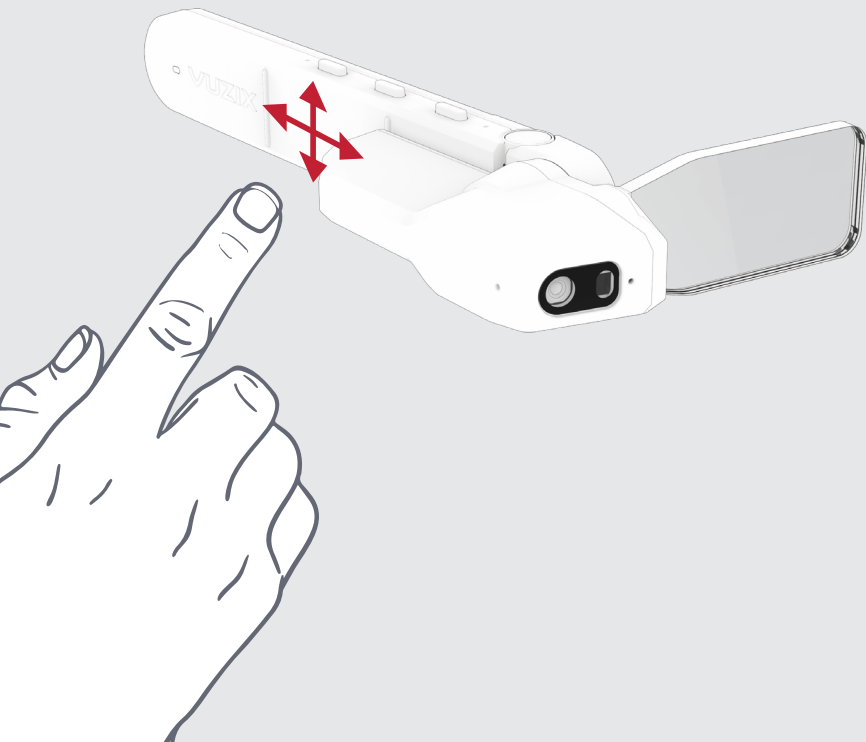
## ADJUSTING & CLEANING THE M4000

Holding only the plastic housing of the lens, adjust left, right, up and down for optimal use. **NEVER adjust by touching/moving the waveguide display**—doing so may damage or destroy the waveguide display. When cleaning, you may stabilize the display by gently holding the outer edge, but only if the rest of the unit is properly supported.



# NAVIGATING THE M4000





## TOUCHPAD BUTTON NAVIGATION

Short press for primary functions:

**front:** forward navigation

**center:** back navigation

**back:** select

Long press (approx one sec) touch  
for secondary functions:

**front:** right-click

**center:** exit to home menu

**back:** back one step

## TOUCHPAD NAVIGATION

The 2-axis pad responds to up and  
down or back-to-front finger swipes.

Tap to select.

## WEARING THE M4000

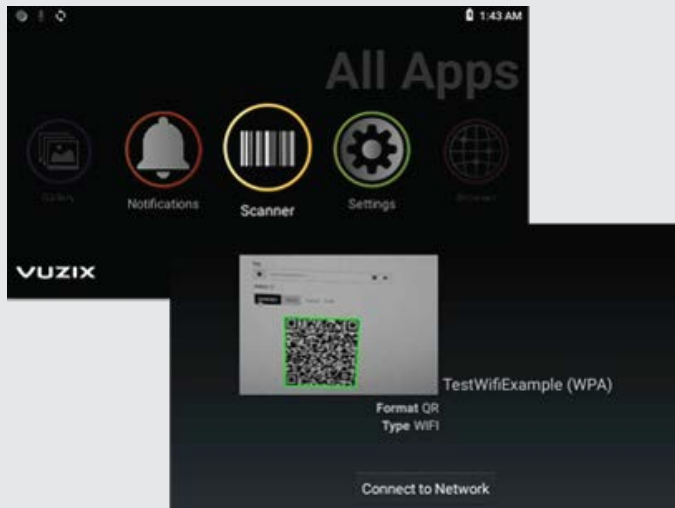
### WI-FI QUICK CONNECT

The easiest way to connect to Wi-Fi is by scanning a QR code.

QR code setup:

1. Create a QR code securely\* using [www.vuzix.com/wifiQR](http://www.vuzix.com/wifiQR) directly from your phone or computer.
2. Open Scanner from the main carousel.
3. Center available QR code in viewfinder to scan.

\*Vuzix cares about your privacy and security. By visiting this link, our website sends your browser the software to create the QR code. Your confidential data is processed locally on your own device, and never sent to our server.



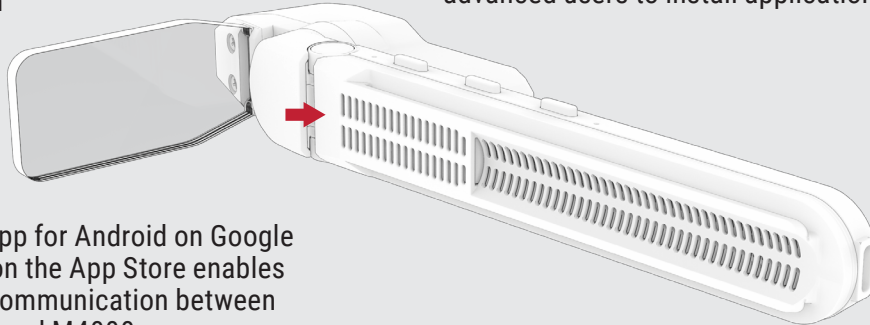


## REGISTERING YOUR DEVICE

One finger:

1. Register your device by logging on to your Vuzix App Store account or registering from a computer or phone at [www.vuzix.com/appstore/user/add-device](http://www.vuzix.com/appstore/user/add-device).
2. Follow the instructions on the website
3. Once registered, you will see the serial number of your M4000 under your account.

Serial number location



4. The companion app for Android on Google Play and for iOS on the App Store enables easy set up and communication between your smartphone and M4000.

## INSTALLING APPLICATIONS

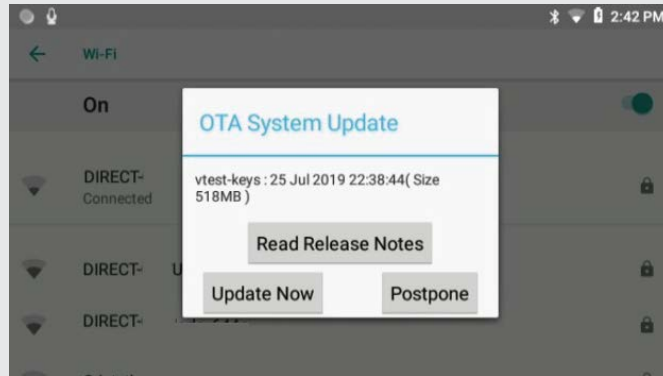
Applications can be installed on the M4000 via the Vuzix App Store. The Vuzix App Store will install and manage applications via the OTA (Over the Air) mechanism and will require Wi-Fi connectivity.

For instruction and additional information about installing applications and using the Vuzix App Store, visit: [www.vuzix.com/support](http://www.vuzix.com/support)

The M4000 supports ADB (Android Debug Bridge) as an alternative mechanism for advanced users to install applications.

## GETTING THE LATEST UPDATES

The M4000 will automatically check for updates once it is connected to Wi-Fi. Click Update Now on the following pop-up.



Note: If your corporate firewall prevent access to the external website, your system administrator may provide additional settings for your M4000 or may provide a software update offline.

## DEVELOPING FOR M4000

Developer documentation is available at [vuzix.com/developers](https://vuzix.com/developers).

In order to power the unit during development, please note:

- The included battery does not support data pass-through.
- The viewer should be plugged into the developer's machine with a USB C-to-C cable for the best experience.
- If a USB A-to-C cable must be used, then using a CDP-capable port will provide enough power. If the USB-A port is not providing sufficient power, functions of the device may become impaired without notice, and the viewer may shut down completely.

## TROUBLESHOOTING COMMON ISSUES

SYMPTOM	DIAGNOSIS	REMEDY
M4000 will not turn on and status LED is not lit.	Battery is discharged.	Connect battery to wall charger for up to two hours for a full charge, then connect battery to viewer.
M4000 will not turn on and status LED is blinking red.	Internal battery is discharged.	Leave viewer connected to USB power. System will begin booting within a few minutes.
M4000 display is not on but status LED is lit.	Screen has turned off to conserve power.	Tap any button to wake the screen.
M4000 powers off after 20-30 minutes while plugged in to USB.	USB source does not provide enough current.	M4000 can draw up to 1.5A while in operation.

## **CLEANING AND CARE**

- Clean the viewer and battery with a damp cloth and mild detergent if necessary. Do not use all-purpose cleaners as these may damage the seals and impair the water resistance.
- Make sure that there is no standing water in the USB connector before inserting the cable.
- Do not insert sharp objects into any holes in the viewer as this may damage the mesh and impair the water resistance.
- Do not use metal objects to clean the USB port as this may cause electrical damage.
- The waveguide may be cleaned using a microfiber cloth and lens cleaner or warm water and a mild detergent. Do not hold or handle the M4000 by the screen. Avoid exerting pressure on the screen as that can cause it to crack.

## REGULATORY INFORMATION

Regulatory information can be viewed from the Settings application:

1. Open “System”
2. Open “About Glasses”
3. Open “Regulatory Labels”

### FCC Caution:

This transmitter must not be co-located or operating in conjunction with any other antenna or transmitter.

Any Changes or modifications not expressly approved by the party responsible for compliance could void the user's authority to operate the equipment.

This device complies with part 15 of the FCC Rules. Operation is subject to the following two conditions: (1) This device may not cause harmful interference, and (2) this device must accept any interference received, including interference that may cause undesired operation.

Note: This equipment has been tested and found to comply with the limits for a Class B digital device, pursuant to part 15 of the FCC Rules. These limits are designed to provide reasonable protection against harmful interference in a residential

installation. This equipment generates, uses and can radiate radio frequency energy and, if not installed and used in accordance with the instructions, may cause harmful interference to radio communications. However, there is no guarantee that interference will not occur in a particular installation. If this equipment does cause harmful interference to radio or television reception, which can be determined by turning the equipment off and on, the user is encouraged to try to correct the interference by one or more of the following measures:

- Reorient or relocate the receiving antenna.
- Increase the separation between the equipment and receiver.
- Connect the equipment into an outlet on a circuit different from that to which the receiver is connected.
- Consult the dealer or an experienced radio/TV technician for help.

The device has been tested and in compliance with SAR limits. This equipment should be installed and operated with minimum distance 0mm between the radiator & your body.

**ISED Warning:**

This device complies with Industry Canada licence-exempt RSS standard(s). Operation is subject to the following two conditions:

- (1) this device may not cause interference, and
- (2) this device must accept any interference, including interference that may cause undesired operation of the device.

Le présent appareil est conforme aux CNR d'Industrie Canada applicables aux appareils radio exempts de licence. L'exploitation est autorisée aux deux conditions suivantes :

- (1) l'appareil ne doit pas produire de brouillage, et
- (2) l'utilisateur de l'appareil doit accepter tout brouillage radioélectrique subi, même si le brouillage est susceptible d'en compromettre le fonctionnement.

The device has been tested and in compliance with SAR limits, users can obtain Canadian information on RF exposure and compliance. This equipment should be installed and operated with minimum distance 0mm between the radiator & your body.

Après examen de ce matériel aux conformité aux limites DAS

et/ou aux limites d'intensité de champ RF, les utilisateurs peuvent sur l'exposition aux radiofréquences et la conformité and compliance d'acquérir les informations correspondantes. Ce matériel devrait être installé et adapté à une distance minimale de 0mm entre le radiateur et votre corps.

**Europe:**



AT	BE	CY	CZ	DK	EE	FI
FR	DE	EL	HU	IE	IT	LV
LT	LU	MT	NL	PL	PT	SK
SI	ES	SE	UK	BG	RO	HR

In all EU member states, operation of 5150-5250 MHz is restricted to indoor use only.

## LEARNING MORE

Visit [www.vuzix.com/support/M4000-smart-glasses](http://www.vuzix.com/support/M4000-smart-glasses) to reference a comprehensive online user's manual or contact [technical\\_support@vuzix.com](mailto:technical_support@vuzix.com) for additional information and assistance.

FOR MORE INFORMATION ON THE M400  
AND ACCESSORIES, VISIT:

**[vuzix.com](http://www.vuzix.com) | [vuzix.eu](http://www.vuzix.eu) | [vuzix.jp](http://www.vuzix.jp)**

Vuzix Corporation  
25 Hendrix Road  
West Henrietta, NY 14586

©Vuzix 2020. This User Manual is subject to change.  
Please read the included safety information, also at [www.vuzix.com/support/safety-warranty-m-series](http://www.vuzix.com/support/safety-warranty-m-series) before using this product.  
All trademarks belong to respect owners.