



# Certificate of Analysis

Powered by Confident Cannabis

Dote Wellness

Las Vegas, NV 89115  
hello@dotewellness.com  
(844) 264-3386  
Lic. #

Sample: 2202DBL0195.1116

METRC Sample:  
Lot #: 020922T001

Strain: Calm

Ordered: 02/22/2022; Sampled: 02/24/2022; Completed: 03/01/2022; Harvest/Production Date: 02/09/2022

## Dote Tincture

Ingestible, Tincture, CO2



Pesticides



Microbials



Mycotoxins



Heavy Metals



Foreign Matter



Solvents

### Terpenes

Analyzed by 300.13 GC/FID and GC/MS

Compound	LOQ mg/g	Mass mg/g	Mass %
<LOQ Total Terpenes			
$\alpha$ -Bisabolol	0.120	<LOQ	<LOQ
$\alpha$ -Humulene	0.120	<LOQ	<LOQ
$\alpha$ -Pinene	0.120	<LOQ	<LOQ
$\alpha$ -Terpinene	0.120	<LOQ	<LOQ
$\beta$ -Caryophyllene	0.120	<LOQ	<LOQ
$\beta$ -Myrcene	0.120	<LOQ	<LOQ
$\beta$ -Pinene	0.120	<LOQ	<LOQ
Camphene	0.120	<LOQ	<LOQ
Caryophyllene Oxide	0.120	<LOQ	<LOQ
cis-Nerolidol	0.078	<LOQ	<LOQ
cis-Ocimene	0.078	<LOQ	<LOQ
$\delta$ -3-Carene	0.120	<LOQ	<LOQ
$\delta$ -Limonene	0.120	<LOQ	<LOQ
Eucalyptol	0.120	<LOQ	<LOQ
$\gamma$ -Terpinene	0.120	<LOQ	<LOQ
Geraniol	0.120	<LOQ	<LOQ
Guaiol	0.120	<LOQ	<LOQ
Isopulegol	0.120	<LOQ	<LOQ
Linalool	0.120	<LOQ	<LOQ
p-Cymene	0.120	<LOQ	<LOQ
Terpinolene	0.120	<LOQ	<LOQ
trans-Nerolidol	0.042	<LOQ	<LOQ
trans-Ocimene	0.042	<LOQ	<LOQ

### Cannabinoid Relative Concentration

Analyzed by 300.18 UHPLC/PDA

Compound	LOQ mg/g	Mass mg/g	Mass %	Relative Concentration
<LOQ $\Delta$ 9-THC + $\Delta$ 8-THC				
53.830 mg/g CBD				
64.287 mg/g Total Cannabinoids				
CBC	0.050	0.540	0.0540	
CBCa	0.050	<LOQ	<LOQ	
CBD	0.050	53.830	5.3830	
CBDa	0.050	<LOQ	<LOQ	
CBDV	0.050	0.295	0.0295	
CBDVa	0.050	<LOQ	<LOQ	
CBG	0.050	0.101	0.0101	
CBGa	0.050	<LOQ	<LOQ	
CBL	0.050	0.056	0.0056	
CBN	0.050	9.464	0.9464	
$\Delta$ 8-THC	0.050	<LOQ	<LOQ	
$\Delta$ 9-THC	0.050	<LOQ	<LOQ	
THCa	0.050	<LOQ	<LOQ	
THCV	0.050	<LOQ	<LOQ	
THCVa	0.050	<LOQ	<LOQ	

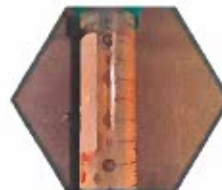
Not Tested

pH: NT  
Aw: NT

Not Tested Homogeneity

1 Unit = Dote Tincture, 30.0085g

Total THC = 0.877 x THC-A +  $\Delta$ 9-THC +  $\Delta$ 8-THC; Total CBD = CBDa \* 0.877 + CBD



*Benjamin G.M. Chew*  
Benjamin G.M. Chew, Ph.D.  
Laboratory Director

*Kelly Zaugg*  
Kelly Zaugg  
Quality Control



4439 Polaris Ave  
Las Vegas, NV  
(702) 728-5180  
www.dblabslv.com

This report is considered highly confidential and the sole property of the customer. DB Labs will not discuss any part of this study with personnel other than those authorized by the client. The results described in this report only apply to the samples analyzed. The reported result is based on a sample weight with the applicable moisture content for that sample. LOQ = Limit of Quantitation. Pesticide LOQ = Instrument Limit of Quantitation, NA = Not Analyzed, ND = Not Detected, NR = Not Reported, NT = Not Tested. PGR = Plant Growth Regulator. Unless otherwise stated all quality control samples performed within specifications established by the Laboratory. This product has been tested by DB Labs, LLC (MME# 61887736101164525768) using valid testing methodologies and a quality system as required by Nevada state law. Edibles are picked up prior to final packaging unless otherwise stated. Values reported relate only to the product tested. The uncertainty of measurement associated with the measurement result reported in this certificate is available from the organization upon request. DB Labs makes no claims as to the efficacy, safety or other risks associated with any detected or non-detected levels of any compounds reported herein. This Certificate shall not be reproduced except in full, without the written approval of DB Labs.



# Certificate of Analysis

Powered by Confident Cannabis

Dote Wellness

Las Vegas, NV 89115  
 hello@dotewellness.com  
 (844) 264-3386  
 Lic. #

Sample: 2202DBL0195.1116

METRC Sample:  
 Lot #: 020922T001

Strain: Calm

Ordered: 02/22/2022; Sampled: 02/24/2022; Completed: 03/01/2022; Harvest/Production Date: 02/09/2022

## Dote Tincture

Ingestible, Tincture, CO2



Pesticides				
Analyzed by 300.9 LC/MS/MS and GC/MS/MS				
Compound	LOQ	Limit	Mass	Status
	PPB	PPB	PPB	
Abamectin	10	0	<LOQ	Pass
Acequinocyl	10	4000	<LOQ	Pass
Bifenazate	10	400	<LOQ	Pass
Bifenthrin	10	0	<LOQ	Pass
Cyfluthrin	10	2000	<LOQ	Pass
Cypermethrin	10	0	<LOQ	Pass
Daminozide	10	0	<LOQ	Pass
Dimethomorph	10	2000	<LOQ	Pass
Etoxazole	10	400	<LOQ	Pass
Fenhexamid	10	1000	<LOQ	Pass
Flonicamid	10	1000	<LOQ	Pass
Fludioxonil	10	500	<LOQ	Pass
Imidacloprid	10	500	<LOQ	Pass
Myclobutanil	10	400	<LOQ	Pass
Paclobutrazol	10	0	<LOQ	Pass
Piperonyl Butoxide	10	3000	<LOQ	Pass
Pyrethrins	10	2000	<LOQ	Pass
Quintozene	10	800	<LOQ	Pass
Spinetoram	10	1000	<LOQ	Pass
Spinosad	10	1000	<LOQ	Pass
Spirotetramat	10	1000	<LOQ	Pass
Thiamethoxam	10	400	<LOQ	Pass
Trifloxystrobin	10	1000	<LOQ	Pass
Plant Growth Regulators	10	50	<LOQ	Pass

Microbials				
Analyzed by 300.1 Plating/QPCR				
Quantitative Analysis	LOQ	Limit	Mass	Status
	CFU/g	CFU/g	CFU/g	
Aerobic Bacteria	9	100000	<LOQ	Pass
Bile-Tolerant Gram-Negative Bacteria	90	1000	<LOQ	Pass
Qualitative Analysis	Detected or Not Detected			Status
E Coli	Not Detected			Pass
Salmonella	Not Detected			Pass

Mycotoxins				
Analyzed by 300.2 Elisa				
Mycotoxin	LOQ	Limit	Mass	Status
				Not Tested

Heavy Metals				
Analyzed by 300.8 ICP/MS				
Element	LOQ	Limit	Mass	Status
	PPB	PPB	PPB	
Arsenic	65	2000	<LOQ	Pass
Cadmium	65	820	<LOQ	Pass
Lead	65	1200	<LOQ	Pass
Mercury	65	400	<LOQ	Pass

Residual Solvents				
Analyzed by 300.13 GC/FID and GC/MS				
Compound	LOQ	Limit	Mass	Status
	PPM	PPM	PPM	
Butanes	77	500	<LOQ	Pass
Ethanol	77		<LOQ	Tested
Heptanes	77	500	<LOQ	Pass
Propane	77	500	<LOQ	Pass



*Benjamin G.M. Chew*  
 Benjamin G.M. Chew, Ph.D.  
 Laboratory Director

*Kelly Zaugg*  
 Kelly Zaugg  
 Quality Control



4439 Polaris Ave  
 Las Vegas, NV  
 (702) 728-5180  
 www.dblabslv.com

This report is considered highly confidential and the sole property of the customer. DB Labs will not discuss any part of this study with personnel other than those authorized by the client. The results described in this report only apply to the samples analyzed. The reported result is based on a sample weight with the applicable moisture content for that sample. LOQ = Limit of Quantitation. Pesticide LOQ = Instrument Limit of Quantitation. NA = Not Analyzed. ND = Not Detected. NR = Not Reported. NT = Not Tested. PGR = Plant Growth Regulator. Unless otherwise stated all quality control samples performed within specifications established by the Laboratory. This product has been tested by DB Labs, LLC (MME# 61887736101164525768) using valid testing methodologies and a quality system as required by Nevada state law. Edibles are picked up prior to final packaging unless otherwise stated. Values reported relate only to the product tested. The uncertainty of measurement associated with the measurement result reported in this certificate is available from the organization upon request. DB Labs makes no claims as to the efficacy, safety or other risks associated with any detected or non-detected levels of any compounds reported herein. This Certificate shall not be reproduced except in full, without the written approval of DB Labs.



# Certificate of Analysis

Powered by Confident Cannabis

Dote Wellness

Las Vegas, NV 89115  
 hello@dotewellness.com  
 (844) 264-3386  
 Lic. #

Sample: 2202DBL0235.1232

METRC Sample:  
 Lot #: 022222RC01

Strain: Calm

Ordered: 02/24/2022; Sampled: 02/24/2022; Completed: 03/01/2022; Harvest/Production Date: 02/22/2022

## NOTE Topical

Topical, Lotion, CO2



Pesticides



Microbials



Mycotoxins



Heavy Metals



Foreign Matter



Solvents

### Terpenes

Analyzed by 300.13 GC/FID and GC/MS



20.253 mg/g  
 Total Terpenes

Compound	LOQ mg/g	Mass mg/g	Mass %	Relative Concentration
δ-Limonene	0.082	5.328	0.5328	
β-Caryophyllene	0.082	4.175	0.4175	
α-Pinene	0.082	2.829	0.2829	
β-Pinene	0.082	2.301	0.2301	
δ-3-Carene	0.082	1.976	0.1976	
Eucalyptol	0.082	1.423	0.1423	
Linalool	0.082	0.549	0.0549	
Terpinolene	0.082	0.406	0.0406	
β-Myrcene	0.082	0.387	0.0387	
Isopulegol	0.082	0.141	0.0141	
γ-Terpinene	0.082	0.137	0.0137	
α-Humulene	0.082	0.137	0.0137	
Camphene	0.082	0.133	0.0133	
trans-Ocimene	0.029	0.124	0.0124	
p-Cymene	0.082	0.114	0.0114	
α-Terpinene	0.082	0.092	0.0092	
α-Bisabolol	0.082	<LOQ	<LOQ	
Caryophyllene Oxide	0.082	<LOQ	<LOQ	
cis-Nerolidol	0.053	<LOQ	<LOQ	
cis-Ocimene	0.053	<LOQ	<LOQ	
Geraniol	0.082	<LOQ	<LOQ	
Guaiol	0.082	<LOQ	<LOQ	
trans-Nerolidol	0.029	<LOQ	<LOQ	

### Cannabinoid Relative Concentration

Analyzed by 300.18 UHPLC/PDA

Compound	LOQ mg/g	Mass mg/g	Mass %	Relative Concentration
CBC	0.049	0.162	0.0162	
CBCa	0.049	<LOQ	<LOQ	
CBD	0.049	17.702	1.7702	
CBDa	0.049	<LOQ	<LOQ	
CBDV	0.049	0.092	0.0092	
CBDVa	0.049	<LOQ	<LOQ	
CBG	0.049	0.068	0.0068	
CBGa	0.049	<LOQ	<LOQ	
CBL	0.049	<LOQ	<LOQ	
CBN	0.049	<LOQ	<LOQ	
Δ8-THC	0.049	<LOQ	<LOQ	
Δ9-THC	0.049	<LOQ	<LOQ	
THCa	0.049	<LOQ	<LOQ	
THCV	0.049	<LOQ	<LOQ	
THCVa	0.049	<LOQ	<LOQ	

1 Unit = DOTE Topical, 25.526g  
 Total THC = 0.877 × THC-A + Δ9-THC + Δ8-THC; Total CBD = CBDa \* 0.877 + CBD



Not Tested

pH: NT  
 Aw: NT

Not Tested  
 Homogeneity



*Benjamin G.M. Chew, Ph.D.*  
 Benjamin G.M. Chew, Ph.D.  
 Laboratory Director

*Glen Marquez*  
 Glen Marquez  
 Quality Control



4439 Polaris Ave  
 Las Vegas, NV  
 (702) 728-5180  
 www.dblabslv.com

This report is considered highly confidential and the sole property of the customer. DB Labs will not discuss any part of this study with personnel other than those authorized by the client. The results described in this report only apply to the samples analyzed. The reported result is based on a sample weight with the applicable moisture content for that sample. LOQ = Limit of Quantitation. Pesticide LOQ = Instrument Limit of Quantitation, NA = Not Analyzed, ND = Not Detected, NR = Not Reported, NT = Not Tested. PGR = Plant Growth Regulator. Unless otherwise stated all quality control samples performed within specifications established by the Laboratory. This product has been tested by DB Labs, LLC (MME# 61887736101164525768) using valid testing methodologies and a quality system as required by Nevada state law. Edibles are picked up prior to final packaging unless otherwise stated. Values reported relate only to the product tested. The uncertainty of measurement associated with the measurement result reported in this certificate is available from the organization upon request. DB Labs makes no claims as to the efficacy, safety or other risks associated with any detected or non-detected levels of any compounds reported herein. This Certificate shall not be reproduced except in full, without the written approval of DB Labs.





# Certificate of Analysis

Powered by Confident Cannabis

Dote Wellness

Las Vegas, NV 89115  
 hello@dotewellness.com  
 (844) 264-3386  
 Lic. #

Sample: 2202DBL0235.1232

METRC Sample:  
 Lot #: 022222RC01

Strain: Calm

Ordered: 02/24/2022; Sampled: 02/24/2022; Completed: 03/01/2022; Harvest/Production Date: 02/22/2022

## NOTE Topical

Topical, Lotion, CO2



Pesticides		Pass		
Analyzed by 300.9 LC/MS/MS and GC/MS/MS				
Compound	LOQ	Limit	Mass	Status
	PPB	PPB	PPB	
Abamectin	10	0	<LOQ	Pass
Acequinocyl	10	4000	<LOQ	Pass
Bifenazate	10	400	<LOQ	Pass
Bifenthrin	10	0	<LOQ	Pass
Cyfluthrin	10	2000	<LOQ	Pass
Cypermethrin	10	0	<LOQ	Pass
Daminozide	10	0	<LOQ	Pass
Dimethomorph	10	2000	<LOQ	Pass
Etoxazole	10	400	<LOQ	Pass
Fenhexamid	10	1000	<LOQ	Pass
Flonicamid	10	1000	<LOQ	Pass
Fludioxonil	10	500	<LOQ	Pass
Imidacloprid	10	500	<LOQ	Pass
Myclobutanil	10	400	<LOQ	Pass
Paclobutrazol	10	0	<LOQ	Pass
Piperonyl Butoxide	10	3000	<LOQ	Pass
Pyrethrins	10	2000	<LOQ	Pass
Quintozene	10	800	<LOQ	Pass
Spinetoram	10	1000	<LOQ	Pass
Spinosad	10	1000	<LOQ	Pass
Spirotetramat	10	1000	<LOQ	Pass
Thiamethoxam	10	400	<LOQ	Pass
Trifloxystrobin	10	1000	<LOQ	Pass
Plant Growth Regulators	10	50	<LOQ	Pass

Microbials		Pass		
Analyzed by 300.1 Plating/QPCR				
Quantitative Analysis	LOQ	Limit	Mass	Status
	CFU/g	CFU/g	CFU/g	
Aerobic Bacteria	9	100000	<LOQ	Pass
Bile-Tolerant Gram-Negative Bacteria	90	1000	<LOQ	Pass
Yeast & Mold	9	10000	<LOQ	Pass
Qualitative Analysis	Detected or Not Detected			Status
E. Coli	Not Detected			Pass
Salmonella	Not Detected			Pass

Mycotoxins		Not Tested		
Analyzed by 300.2 Elisa				
Mycotoxin	LOQ	Limit	Mass	Status

Heavy Metals		Pass		
Analyzed by 300.8 ICP/MS				
Element	LOQ	Limit	Mass	Status
	PPB	PPB	PPB	
Arsenic	57	2000	<LOQ	Pass
Cadmium	57	820	<LOQ	Pass
Lead	57	1200	<LOQ	Pass
Mercury	57	400	<LOQ	Pass

Residual Solvents		Pass		
Analyzed by 300.13 GC/FID and GC/MS				
Compound	LOQ	Limit	Mass	Status
	PPM	PPM	PPM	
Butanes	53	500	<LOQ	Pass
Ethanol	53		<LOQ	Tested
Heptanes	53	500	<LOQ	Pass
Propane	53	500	<LOQ	Pass



*Benjamin G.M. Chew*  
 Benjamin G.M. Chew, Ph.D.  
 Laboratory Director

*Glen Marquez*  
 Glen Marquez  
 Quality Control



4439 Polaris Ave  
 Las Vegas, NV  
 (702) 728-5180  
 www.dblabslv.com

This report is considered highly confidential and the sole property of the customer. DB Labs will not discuss any part of this study with personnel other than those authorized by the client. The results described in this report only apply to the samples analyzed. The reported result is based on a sample weight with the applicable moisture content for that sample. LOQ = Limit of Quantitation. Pesticide LOQ = Instrument Limit of Quantitation, NA = Not Analyzed, ND = Not Detected, NR = Not Reported, NT = Not Tested. PGR = Plant Growth Regulator. Unless otherwise stated all quality control samples performed within specifications established by the Laboratory. This product has been tested by DB Labs, LLC (MME# 61887736101164525768) using valid testing methodologies and a quality system as required by Nevada state law. Edibles are picked up prior to final packaging unless otherwise stated. Values reported relate only to the product tested. The uncertainty of measurement associated with the measurement result reported in this certificate is available from the organization upon request. DB Labs makes no claims as to the efficacy, safety or other risks associated with any detected or non-detected levels of any compounds reported herein. This Certificate shall not be reproduced except in full, without the written approval of DB Labs.