



# Certificate of Analysis

Powered by Confident Cannabis

## Dote Wellness

Las Vegas, NV 89115  
hello@dotewellness.com  
(844) 264-3386  
Lic. #

Sample: 2202DBL0195.1116

METRC Sample:  
Lot #: 020922T001

Strain: Calm

Ordered: 02/22/2022; Sampled: 02/24/2022; Completed: 03/01/2022; Harvest/Production Date: 02/09/2022

## Dote Tincture

Ingestible, Tincture, CO2



Pesticides



Microbials



Mycotoxins



Heavy Metals



Foreign Matter



Solvents

### Terpenes

Analyzed by 300.13 GC/FID and GC/MS

<LOQ  
Total Terpenes

Compound	LOQ mg/g	Mass mg/g	Mass %
$\alpha$ -Bisabolol	0.120	<LOQ	<LOQ
$\alpha$ -Humulene	0.120	<LOQ	<LOQ
$\alpha$ -Pinene	0.120	<LOQ	<LOQ
$\alpha$ -Terpinene	0.120	<LOQ	<LOQ
$\beta$ -Caryophyllene	0.120	<LOQ	<LOQ
$\beta$ -Myrcene	0.120	<LOQ	<LOQ
$\beta$ -Pinene	0.120	<LOQ	<LOQ
Camphene	0.120	<LOQ	<LOQ
Caryophyllene Oxide	0.120	<LOQ	<LOQ
cis-Nerolidol	0.078	<LOQ	<LOQ
cis-Ocimene	0.078	<LOQ	<LOQ
$\delta$ -3-Carene	0.120	<LOQ	<LOQ
$\delta$ -Limonene	0.120	<LOQ	<LOQ
Eucalyptol	0.120	<LOQ	<LOQ
$\gamma$ -Terpinene	0.120	<LOQ	<LOQ
Geraniol	0.120	<LOQ	<LOQ
Guaiol	0.120	<LOQ	<LOQ
Isopulegol	0.120	<LOQ	<LOQ
Linalool	0.120	<LOQ	<LOQ
p-Cymene	0.120	<LOQ	<LOQ
Terpinolene	0.120	<LOQ	<LOQ
trans-Nerolidol	0.042	<LOQ	<LOQ
trans-Ocimene	0.042	<LOQ	<LOQ

### Cannabinoid Relative Concentration

Analyzed by 300.18 UHPLC/PDA

Not Tested

<LOQ  
 $\Delta^9$ -THC +  $\Delta^8$ -THC

53.830 mg/g  
CBD

pH: NT  
Aw: NT

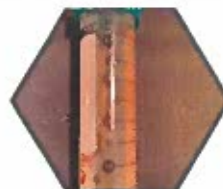
64.287 mg/g  
Total Cannabinoids

Not Tested  
Homogeneity

Compound	LOQ mg/g	Mass mg/g	Mass %	Relative Concentration
CBC	0.050	0.540	0.0540	
CBCa	0.050	<LOQ	<LOQ	
CBD	0.050	53.830	5.3830	
CBDa	0.050	<LOQ	<LOQ	
CBDV	0.050	0.295	0.0295	
CBDVa	0.050	<LOQ	<LOQ	
CBG	0.050	0.101	0.0101	
CBGa	0.050	<LOQ	<LOQ	
CBL	0.050	0.056	0.0056	
CBN	0.050	9.464	0.9464	
$\Delta^8$ -THC	0.050	<LOQ	<LOQ	
$\Delta^9$ -THC	0.050	<LOQ	<LOQ	
THCa	0.050	<LOQ	<LOQ	
THCV	0.050	<LOQ	<LOQ	
THCVa	0.050	<LOQ	<LOQ	

1 Unit = Dote Tincture, 30.0085g

Total THC =  $0.877 \times \text{THC-A} + \Delta^9\text{-THC} + \Delta^8\text{-THC}$ ; Total CBD =  $\text{CBDa} \times 0.877 + \text{CBD}$



*Benjamin G.M. Chew, Ph.D.*

Benjamin G.M. Chew, Ph.D.  
Laboratory Director

*Kelly Zaugg*

Kelly Zaugg  
Quality Control

This report is considered highly confidential and the sole property of the customer. DB Labs will not discuss any part of this study with personnel other than those authorized by the client. The results described in this report only apply to the samples analyzed. The reported result is based on a sample weight with the applicable moisture content for that sample. LOQ = Limit of Quantitation. Pesticide LOQ = Instrument Limit of Quantitation. NA = Not Analyzed. ND = Not Detected. NR = Not Reported. NT = Not Tested. PGR = Plant Growth Regulator. Unless otherwise stated all quality control samples performed within specifications established by the Laboratory. This product has been tested by DB Labs, LLC (MME# 61887736101164525768) using valid testing methodologies and a quality system as required by Nevada state law. Edibles are picked up prior to final packaging unless otherwise stated. Values reported relate only to the product tested. The uncertainty of measurement associated with the measurement result reported in this certificate is available from the organization upon request. DB Labs makes no claims as to the efficacy, safety or other risks associated with any detected or non-detected levels of any compounds reported herein. This Certificate shall not be reproduced except in full, without the written approval of DB Labs.



4439 Polaris Ave  
Las Vegas, NV  
(702) 728-5180  
www.dblabslv.com



# Certificate of Analysis

Powered by Confident Cannabis

## Dote Wellness

Las Vegas, NV 89115  
hello@dote wellness.com  
(844) 264-3386  
Lic. #

Sample: 2202DBL0195.1116

METRC Sample:  
Lot #: 020922T001

Strain: Calm

Ordered: 02/22/2022; Sampled: 02/24/2022; Completed: 03/01/2022; Harvest/Production Date: 02/09/2022

## Dote Tincture

Ingestible, Tincture, CO2



### Pesticides

Analyzed by 300.9 LC/MS/MS and GC/MS/MS

Pass

Compound	LOQ	Limit	Mass	Status
	PPB	PPB	PPB	
Abamectin	10	0	<LOQ	Pass
Acequinocyl	10	4000	<LOQ	Pass
Bifenazate	10	400	<LOQ	Pass
Bifenthrin	10	0	<LOQ	Pass
Cyfluthrin	10	2000	<LOQ	Pass
Cypermethrin	10	0	<LOQ	Pass
Daminozide	10	0	<LOQ	Pass
Dimethomorph	10	2000	<LOQ	Pass
Etoxazole	10	400	<LOQ	Pass
Fenhexamid	10	1000	<LOQ	Pass
Flonicamid	10	1000	<LOQ	Pass
Fludioxonil	10	500	<LOQ	Pass
Imidacloprid	10	500	<LOQ	Pass
Myclobutanil	10	400	<LOQ	Pass
Paclobutrazol	10	0	<LOQ	Pass
Piperonyl Butoxide	10	3000	<LOQ	Pass
Pyrethrins	10	2000	<LOQ	Pass
Quintozene	10	800	<LOQ	Pass
Spinetoram	10	1000	<LOQ	Pass
Spinosad	10	1000	<LOQ	Pass
Spirotetramat	10	1000	<LOQ	Pass
Thiamethoxam	10	400	<LOQ	Pass
Trifloxystrobin	10	1000	<LOQ	Pass
Plant Growth Regulators	10	50	<LOQ	Pass

### Microbials

Analyzed by 300.1 Plating/QPCR

Pass

Quantitative Analysis	LOQ	Limit	Mass	Status
	CFU/g	CFU/g	CFU/g	
Aerobic Bacteria	9	100000	<LOQ	Pass
Bile-Tolerant Gram-Negative Bacteria	90	1000	<LOQ	Pass
Qualitative Analysis	Detected or Not Detected			Status
E. Coli	Not Detected			Pass
Salmonella	Not Detected			Pass

### Mycotoxins

Analyzed by 300.2 Elisa

Not Tested

Mycotoxin	LOQ	Limit	Mass	Status
-----------	-----	-------	------	--------

### Heavy Metals

Analyzed by 300.8 ICP/MS

Pass

Element	LOQ	Limit	Mass	Status
	PPB	PPB	PPB	
Arsenic	65	2000	<LOQ	Pass
Cadmium	65	820	<LOQ	Pass
Lead	65	1200	<LOQ	Pass
Mercury	65	400	<LOQ	Pass

### Residual Solvents

Analyzed by 300.13 GC/FID and GC/MS

Pass

Compound	LOQ	Limit	Mass	Status
	PPM	PPM	PPM	
Butanes	77	500	<LOQ	Pass
Ethanol	77		<LOQ	Tested
Heptanes	77	500	<LOQ	Pass
Propane	77	500	<LOQ	Pass



*Benjamin G.M. Chew, Ph.D.*  
Benjamin G.M. Chew, Ph.D.  
Laboratory Director

*Kelly Zaugg*  
Kelly Zaugg  
Quality Control



4439 Polaris Ave  
Las Vegas, NV  
(702) 728-5180  
www.dblabslv.com

This report is considered highly confidential and the sole property of the customer. DB Labs will not discuss any part of this study with personnel other than those authorized by the client. The results described in this report only apply to the samples analyzed. The reported result is based on a sample weight with the applicable moisture content for that sample. LOQ = Limit of Quantitation. Pesticide LOQ = Instrument Limit of Quantitation. NA = Not Analyzed. ND = Not Detected. NR = Not Reported. NT = Not Tested. PGR = Plant Growth Regulator. Unless otherwise stated all quality control samples performed within specifications established by the Laboratory. This product has been tested by DB Labs, LLC (MME# 61887736101164525768) using valid testing methodologies and a quality system as required by Nevada state law. Edibles are picked up prior to final packaging unless otherwise stated. Values reported relate only to the product tested. The uncertainty of measurement associated with the measurement result reported in this certificate is available from the organization upon request. DB Labs makes no claims as to the efficacy, safety or other risks associated with any detected or non-detected levels of any compounds reported herein. This Certificate shall not be reproduced except in full, without the written approval of DB Labs.



# Certificate of Analysis

Powered by Confident Cannabis

## Solace Hemp

Las Vegas, NV 89115  
dtisom@solaceholdings.com  
(702) 290-3984  
Lic. #

Sample: 2201DBL0213.0485

METRC Sample:

Strain: Dream

Ordered: 01/26/2022; Sampled: 01/26/2022; Completed: 01/29/2022; Harvest/Production Date: 01/07/2022

## Dote

Ingestible, Capsule



### Cannabinoids

<LOQ

9.597  
mg/unit

$\Delta 9$ -THC +  $\Delta 8$ -THC

CBD

12.870  
mg/unit

NT

Total Cannabinoids

Moisture

1 Unit = Dote, 0.50074g

### Cannabinoids

CBC  
CBCa  
CBD  
CBDa  
CBDV  
CBDVa  
CBG  
CBGa  
CBL  
CBN  
 $\Delta 8$ -THC  
 $\Delta 9$ -THC  
THCa  
THCV  
THCVa

### Cannabinoid Profile

Analyzed by 300.18 UHPLC/PDA

Cannabinoid	Mass mg/unit	Mass mg/g	LOQ mg/unit
CBC	0.401	0.801	0.050
CBCa	<LOQ	<LOQ	0.050
CBD	9.597	19.166	0.050
CBDa	<LOQ	<LOQ	0.050
CBDV	<LOQ	<LOQ	0.050
CBDVa	<LOQ	<LOQ	0.050
CBG	0.100	0.200	0.050
CBGa	<LOQ	<LOQ	0.050
CBL	<LOQ	<LOQ	0.050
CBN	2.772	5.536	0.050
$\Delta 8$ -THC	<LOQ	<LOQ	0.050
$\Delta 9$ -THC	<LOQ	<LOQ	0.050
THCa	<LOQ	<LOQ	0.050
THCV	<LOQ	<LOQ	0.050
THCVa	<LOQ	<LOQ	0.050
Total THC	ND	ND	
Total CBD	9.597	19.166	
Total	12.870	25.703	



*Benjamin G.M. Chew, Ph.D.*  
Benjamin G.M. Chew, Ph.D.  
Laboratory Director

*Glen Marquez*  
Glen Marquez  
Quality Control



4439 Polaris Ave  
Las Vegas, NV

(702) 728-5180

www.dblabslv.com

This report is considered highly confidential and the sole property of the customer. DB Labs will not discuss any part of this study with personnel other than those authorized by the client. The results described in this report only apply to the samples analyzed. The reported result is based on a sample weight with the applicable moisture content for that sample. LOQ = Limit of Quantitation. Pesticide LOQ = Instrument Limit of Quantitation, NA = Not Analyzed, ND = Not Detected, NR = Not Reported, NT = Not Tested. PGR = Plant Growth Regulator. Unless otherwise stated all quality control samples performed within specifications established by the Laboratory. This product has been tested by DB Labs, LLC (MME# 61887736101164525768) using valid testing methodologies and a quality system as required by Nevada state law. Edibles are picked up prior to final packaging unless otherwise stated. Values reported relate only to the product tested. The uncertainty of measurement associated with the measurement result reported in this certificate is available from the organization upon request. DB Labs makes no claims as to the efficacy, safety or other risks associated with any detected or non-detected levels of any compounds reported herein. This Certificate shall not be reproduced except in full, without the written approval of DB Labs.