



Certificate of Analysis

Powered by Confident Cannabis

Dote Wellness

Las Vegas, NV 89115
hello@dotewellness.com
(844) 264-3386
Lic. #

Sample: 2202DBL0195.1116

METRC Sample:
Lot #: 020922T001

Strain: Calm

Ordered: 02/22/2022; Sampled: 02/24/2022; Completed: 03/01/2022; Harvest/Production Date: 02/09/2022

Dote Tincture

Ingestible, Tincture, CO2



Pesticides



Microbials



Mycotoxins



Heavy Metals



Foreign Matter



Solvents

Terpenes

Analyzed by 300.13 GC/FID and GC/MS

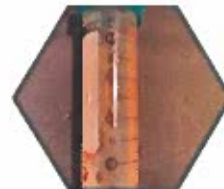
Compound	LOQ mg/g	Mass mg/g	Mass %
<LOQ Total Terpenes			
α -Bisabolol	0.120	<LOQ	<LOQ
α -Humulene	0.120	<LOQ	<LOQ
α -Pinene	0.120	<LOQ	<LOQ
α -Terpinene	0.120	<LOQ	<LOQ
β -Caryophyllene	0.120	<LOQ	<LOQ
β -Myrcene	0.120	<LOQ	<LOQ
β -Pinene	0.120	<LOQ	<LOQ
Camphene	0.120	<LOQ	<LOQ
Caryophyllene Oxide	0.120	<LOQ	<LOQ
cis-Nerolidol	0.078	<LOQ	<LOQ
cis-Ocimene	0.078	<LOQ	<LOQ
δ -3-Carene	0.120	<LOQ	<LOQ
δ -Limonene	0.120	<LOQ	<LOQ
Eucalyptol	0.120	<LOQ	<LOQ
γ -Terpinene	0.120	<LOQ	<LOQ
Geraniol	0.120	<LOQ	<LOQ
Guaiol	0.120	<LOQ	<LOQ
Isopulegol	0.120	<LOQ	<LOQ
Linalool	0.120	<LOQ	<LOQ
p-Cymene	0.120	<LOQ	<LOQ
Terpinolene	0.120	<LOQ	<LOQ
trans-Nerolidol	0.042	<LOQ	<LOQ
trans-Ocimene	0.042	<LOQ	<LOQ

Cannabinoid Relative Concentration

Analyzed by 300.18 UHPLC/PDA

Compound	LOQ mg/g	Mass mg/g	Mass %	Relative Concentration
<LOQ Δ 9-THC + Δ 8-THC		53.830	0.0540	Not Tested Homogeneity
CBD		64.287	0.9464	
CBC	0.050	0.540	0.0540	
CBCa	0.050	<LOQ	<LOQ	
CBD	0.050	53.830	5.3830	
CBDa	0.050	<LOQ	<LOQ	
CBDV	0.050	0.295	0.0295	
CBDVa	0.050	<LOQ	<LOQ	
CBG	0.050	0.101	0.0101	
CBGa	0.050	<LOQ	<LOQ	
CBL	0.050	0.056	0.0056	
CBN	0.050	9.464	0.9464	
Δ 8-THC	0.050	<LOQ	<LOQ	
Δ 9-THC	0.050	<LOQ	<LOQ	
THCa	0.050	<LOQ	<LOQ	
THCV	0.050	<LOQ	<LOQ	
THCVa	0.050	<LOQ	<LOQ	

1 Unit = Dote Tincture, 30.0085g
Total THC = 0.877 x THC-A + Δ 9-THC + Δ 8-THC; Total CBD = CBDa * 0.877 + CBD



Benjamin G.M. Chew
Benjamin G.M. Chew, Ph.D.
Laboratory Director

Kelly Zaugg
Kelly Zaugg
Quality Control



4439 Polaris Ave
Las Vegas, NV
(702) 728-5180
www.dblabslv.com

This report is considered highly confidential and the sole property of the customer. DB Labs will not discuss any part of this study with personnel other than those authorized by the client. The results described in this report only apply to the samples analyzed. The reported result is based on a sample weight with the applicable moisture content for that sample. LOQ = Limit of Quantitation. Pesticide LOQ = Instrument Limit of Quantitation, NA = Not Analyzed. ND = Not Detected. NR = Not Reported. NT = Not Tested. PGR = Plant Growth Regulator. Unless otherwise stated all quality control samples performed within specifications established by the Laboratory. This product has been tested by DB Labs, LLC (MME# 61887736101164525768) using valid testing methodologies and a quality system as required by Nevada state law. Edibles are picked up prior to final packaging unless otherwise stated. Values reported relate only to the product tested. The uncertainty of measurement associated with the measurement result reported in this certificate is available from the organization upon request. DB Labs makes no claims as to the efficacy, safety or other risks associated with any detected or non-detected levels of any compounds reported herein. This Certificate shall not be reproduced except in full, without the written approval of DB Labs.



Certificate of Analysis

Powered by Confident Cannabis

Dote Wellness

Las Vegas, NV 89115
hello@dotewellness.com
(844) 264-3386
Lic. #

Sample: 2202DBL0195.1116

METRC Sample:
Lot #: 020922T001

Strain: Calm

Ordered: 02/22/2022; Sampled: 02/24/2022; Completed: 03/01/2022; Harvest/Production Date: 02/09/2022

Dote Tincture

Ingestible, Tincture, CO2



Pesticides		Pass		
Analyzed by 300.9 LC/MS/MS and GC/MS/MS				
Compound	LOQ	Limit	Mass	Status
	PPB	PPB	PPB	
Abamectin	10	0	<LOQ	Pass
Acequinocyl	10	4000	<LOQ	Pass
Bifenazate	10	400	<LOQ	Pass
Bifenthrin	10	0	<LOQ	Pass
Cyfluthrin	10	2000	<LOQ	Pass
Cypermethrin	10	0	<LOQ	Pass
Daminozide	10	0	<LOQ	Pass
Dimethomorph	10	2000	<LOQ	Pass
Etoxazole	10	400	<LOQ	Pass
Fenhexamid	10	1000	<LOQ	Pass
Flonicamid	10	1000	<LOQ	Pass
Fludioxonil	10	500	<LOQ	Pass
Imidacloprid	10	500	<LOQ	Pass
Myclobutanil	10	400	<LOQ	Pass
Paclobutrazol	10	0	<LOQ	Pass
Piperonyl Butoxide	10	3000	<LOQ	Pass
Pyrethrins	10	2000	<LOQ	Pass
Quintozene	10	800	<LOQ	Pass
Spinetoram	10	1000	<LOQ	Pass
Spinosad	10	1000	<LOQ	Pass
Spirotetramat	10	1000	<LOQ	Pass
Thiamethoxam	10	400	<LOQ	Pass
Trifloxystrobin	10	1000	<LOQ	Pass
Plant Growth Regulators	10	50	<LOQ	Pass

Microbials		Pass		
Analyzed by 300.1 Plating/QPCR				
Quantitative Analysis	LOQ	Limit	Mass	Status
	CFU/g	CFU/g	CFU/g	
Aerobic Bacteria	9	100000	<LOQ	Pass
Bile-Tolerant Gram-Negative Bacteria	90	1000	<LOQ	Pass
Qualitative Analysis	Detected or Not Detected			Status
E. Coli	Not Detected			Pass
Salmonella	Not Detected			Pass

Mycotoxins		Not Tested		
Analyzed by 300.2 Elisa				
Mycotoxin	LOQ	Limit	Mass	Status

Heavy Metals		Pass		
Analyzed by 300.8 ICP/MS				
Element	LOQ	Limit	Mass	Status
	PPB	PPB	PPB	
Arsenic	65	2000	<LOQ	Pass
Cadmium	65	820	<LOQ	Pass
Lead	65	1200	<LOQ	Pass
Mercury	65	400	<LOQ	Pass

Residual Solvents		Pass		
Analyzed by 300.13 GC/FID and GC/MS				
Compound	LOQ	Limit	Mass	Status
	PPM	PPM	PPM	
Butanes	77	500	<LOQ	Pass
Ethanol	77		<LOQ	Tested
Heptanes	77	500	<LOQ	Pass
Propane	77	500	<LOQ	Pass



Benjamin G.M. Chew
Benjamin G.M. Chew, Ph.D.
Laboratory Director

Kelly Zaugg
Kelly Zaugg
Quality Control



4439 Polaris Ave
Las Vegas, NV
(702) 728-5180
www.dblabslv.com

This report is considered highly confidential and the sole property of the customer. DB Labs will not discuss any part of this study with personnel other than those authorized by the client. The results described in this report only apply to the samples analyzed. The reported result is based on a sample weight with the applicable moisture content for that sample. LOQ = Limit of Quantitation. Pesticide LOQ = Instrument Limit of Quantitation, NA = Not Analyzed, ND = Not Detected, NR = Not Reported, NT = Not Tested. PGR = Plant Growth Regulator. Unless otherwise stated all quality control samples performed within specifications established by the Laboratory. This product has been tested by DB Labs, LLC (MME# 61887736101164525768) using valid testing methodologies and a quality system as required by Nevada state law. Edibles are picked up prior to final packaging unless otherwise stated. Values reported relate only to the product tested. The uncertainty of measurement associated with the measurement result reported in this certificate is available from the organization upon request. DB Labs makes no claims as to the efficacy, safety or other risks associated with any detected or non-detected levels of any compounds reported herein. This Certificate shall not be reproduced except in full, without the written approval of DB Labs.



Certificate of Analysis

Powered by Confident Cannabis

Solace Hemp

Las Vegas, NV 89115
dtisom@solaceholdings.com
(702) 290-3984
Lic. #

Sample: 2201DBL0213.0485

METRC Sample:

Strain: Dream

Ordered: 01/26/2022; Sampled: 01/26/2022; Completed: 01/29/2022; Harvest/Production Date: 01/07/2022

Dote

Ingestible, Capsule



Cannabinoids



Cannabinoids

<LOQ

9.597 mg/unit

Δ9-THC + Δ8-THC

CBD

12.870 mg/unit

NT

Total Cannabinoids

Moisture

1 Unit = Dote, 0.50074g

Cannabinoid Profile

Analyzed by 300.18 UHPLC/PDA

Cannabinoid	Mass (mg/unit)	Mass (mg/g)	LOQ (mg/unit)
CBC	0.401	0.801	0.050
CBCa	<LOQ	<LOQ	0.050
CBD	9.597	19.166	0.050
CBDa	<LOQ	<LOQ	0.050
CBDV	<LOQ	<LOQ	0.050
CBDVa	<LOQ	<LOQ	0.050
CBG	0.100	0.200	0.050
CBGa	<LOQ	<LOQ	0.050
CBL	<LOQ	<LOQ	0.050
CBN	2.772	5.536	0.050
Δ8-THC	<LOQ	<LOQ	0.050
Δ9-THC	<LOQ	<LOQ	0.050
THCa	<LOQ	<LOQ	0.050
THCV	<LOQ	<LOQ	0.050
THCVa	<LOQ	<LOQ	0.050
Total THC	ND	ND	
Total CBD	9.597	19.166	
Total	12.870	25.703	



Benjamin G.M. Chew

Benjamin G.M. Chew, Ph.D.
Laboratory Director

Glen Marquez

Glen Marquez
Quality Control



4439 Polaris Ave
Las Vegas, NV
(702) 728-5180
www.dblabslv.com

This report is considered highly confidential and the sole property of the customer. DB Labs will not discuss any part of this study with personnel other than those authorized by the client. The results described in this report only apply to the samples analyzed. The reported result is based on a sample weight with the applicable moisture content for that sample. LOQ = Limit of Quantitation. Pesticide LOQ = Instrument Limit of Quantitation, NA = Not Analyzed, ND = Not Detected, NR = Not Reported, NT = Not Tested. PGR = Plant Growth Regulator. Unless otherwise stated all quality control samples performed within specifications established by the Laboratory. This product has been tested by DB Labs, LLC (IMME# 61887736101164525768) using valid testing methodologies and a quality system as required by Nevada state law. Edibles are picked up prior to final packaging unless otherwise stated. Values reported relate only to the product tested. The uncertainty of measurement associated with the measurement result reported in this certificate is available from the organization upon request. DB Labs makes no claims as to the efficacy, safety or other risks associated with any detected or non-detected levels of any compounds reported herein. This Certificate shall not be reproduced except in full, without the written approval of DB Labs.



Certificate of Analysis

Powered by Confident Cannabis

Solace Hemp

Las Vegas, NV 89115
 dtisom@solaceholdings.com
 (702) 290-3984
 Lic. #

Sample: 2201DBL0213.0483

METRC Sample:

Strain: Focus

Ordered: 01/26/2022; Sampled: 01/26/2022; Completed: 01/29/2022; Harvest/Production Date: 01/07/2022

Dote

Ingestible, Capsule



Cannabinoids



Cannabinoids

<LOQ

9.991
mg/unit

Δ9-THC + Δ8-THC

CBD

10.645
mg/unit

NT

Total Cannabinoids

Moisture

1 Unit = Dote, 0.54925g

Cannabinoid Profile

Analyzed by 300.18 UHPLC/PDA

Cannabinoid	Mass	Mass	LOQ
	mg/unit	mg/g	mg/unit
CBC	0.414	0.754	0.049
CBCa	<LOQ	<LOQ	0.049
CBD	9.991	18.191	0.049
CBDa	<LOQ	<LOQ	0.049
CBDV	<LOQ	<LOQ	0.049
CBDVa	<LOQ	<LOQ	0.049
CBG	0.101	0.184	0.049
CBGa	<LOQ	<LOQ	0.049
CBL	<LOQ	<LOQ	0.049
CBN	0.139	0.253	0.049
Δ8-THC	<LOQ	<LOQ	0.049
Δ9-THC	<LOQ	<LOQ	0.049
THCa	<LOQ	<LOQ	0.049
THCV	<LOQ	<LOQ	0.049
THCVa	<LOQ	<LOQ	0.049
Total THC	ND	ND	
Total CBD	9.991	18.191	
Total	10.645	19.382	



Benjamin G.M. Chew

Benjamin G.M. Chew, Ph.D.
Laboratory Director

Glen Marquez

Glen Marquez
Quality Control



4439 Polaris Ave
Las Vegas, NV
(702) 728-5180

www.dblabslv.com

This report is considered highly confidential and the sole property of the customer. DB Labs will not discuss any part of this study with personnel other than those authorized by the client. The results described in this report only apply to the samples analyzed. The reported result is based on a sample weight with the applicable moisture content for that sample. LOQ = Limit of Quantitation. Pesticide LOQ = Instrument Limit of Quantitation, NA = Not Analyzed, ND = Not Detected, NR = Not Reported, NT = Not Tested. PGR = Plant Growth Regulator. Unless otherwise stated all quality control samples performed within specifications established by the Laboratory. This product has been tested by DB Labs, LLC (MME# 61887736101164525768) using valid testing methodologies and a quality system as required by Nevada state law. Edibles are picked up prior to final packaging unless otherwise stated. Values reported relate only to the product tested. The uncertainty of measurement associated with the measurement result reported in this certificate is available from the organization upon request. DB Labs makes no claims as to the efficacy, safety or other risks associated with any detected or non-detected levels of any compounds reported herein. This Certificate shall not be reproduced except in full, without the written approval of DB Labs.



Certificate of Analysis

Powered by Confident Cannabis

Solace Hemp

Las Vegas, NV 89115
 dtisom@solaceholdings.com
 (702) 290-3984
 Lic. #

Sample: 2201DBL0213.0484

METRC Sample:

Strain: Power

Ordered: 01/26/2022; Sampled: 01/26/2022; Completed: 01/29/2022; Harvest/Production Date: 01/07/2022

Dote

Ingestible, Capsule



Cannabinoids

- CBC
- CBCa
- CBD
- CBDa
- CBDV
- CBDVa
- CBG
- CBGa
- CBL
- CBN
- Δ8-THC
- Δ9-THC
- THCa
- THCV
- THCVa

Cannabinoids

<LOQ

9.499
mg/unit

Δ9-THC + Δ8-THC

CBD

10.039
mg/unit

NT

Total Cannabinoids

Moisture

1 Unit = Dote, 0.45124g

Cannabinoid Profile

Analyzed by 300.18 UHPLC/PDA

Cannabinoid	Mass mg/unit	Mass mg/g	LOQ mg/unit
CBC	0.329	0.730	0.051
CBCa	<LOQ	<LOQ	0.051
CBD	9.499	21.051	0.051
CBDa	<LOQ	<LOQ	0.051
CBDV	<LOQ	<LOQ	0.051
CBDVa	<LOQ	<LOQ	0.051
CBG	0.102	0.226	0.051
CBGa	<LOQ	<LOQ	0.051
CBL	<LOQ	<LOQ	0.051
CBN	0.108	0.240	0.051
Δ8-THC	<LOQ	<LOQ	0.051
Δ9-THC	<LOQ	<LOQ	0.051
THCa	<LOQ	<LOQ	0.051
THCV	<LOQ	<LOQ	0.051
THCVa	<LOQ	<LOQ	0.051
Total THC	ND	ND	
Total CBD	9.499	21.051	
Total	10.039	22.247	



Benjamin G.M. Chew

Benjamin G.M. Chew, Ph.D.
Laboratory Director

Glen Marquez

Glen Marquez
Quality Control



4439 Polaris Ave
Las Vegas, NV
(702) 728-5180

www.dblabslv.com

This report is considered highly confidential and the sole property of the customer. DB Labs will not discuss any part of this study with personnel other than those authorized by the client. The results described in this report only apply to the samples analyzed. The reported result is based on a sample weight with the applicable moisture content for that sample. LOQ = Limit of Quantitation. Pesticide LOQ = Instrument Limit of Quantitation. NA = Not Analyzed. ND = Not Detected. NR = Not Reported. NT = Not Tested. PGR = Plant Growth Regulator. Unless otherwise stated all quality control samples performed within specifications established by the Laboratory. This product has been tested by DB Labs, LLC (MME# 61887736101164525768) using valid testing methodologies and a quality system as required by Nevada state law. Edibles are picked up prior to final packaging unless otherwise stated. Values reported relate only to the product tested. The uncertainty of measurement associated with the measurement result reported in this certificate is available from the organization upon request. DB Labs makes no claims as to the efficacy, safety or other risks associated with any detected or non-detected levels of any compounds reported herein. This Certificate shall not be reproduced except in full, without the written approval of DB Labs.



Certificate of Analysis

Powered by Confident Cannabis

Dote Wellness

Las Vegas, NV 89115
 hello@dotewellness.com
 (844) 264-3386
 Lic. #

Sample: 2202DBL0235.1232

METRC Sample:
 Lot #: 022222RC01

Strain: Calm

Ordered: 02/24/2022; Sampled: 02/24/2022; Completed: 03/01/2022; Harvest/Production Date: 02/22/2022

NOTE Topical

Topical, Lotion, CO2



Pesticides



Microbials



Mycotoxins



Heavy Metals



Foreign Matter



Solvents

Terpenes

Analyzed by 300.13 GC/FID and GC/MS



20.253 mg/g
Total Terpenes

Compound	LOQ mg/g	Mass mg/g	Mass %	Relative Concentration
δ-Limonene	0.082	5.328	0.5328	
β-Caryophyllene	0.082	4.175	0.4175	
α-Pinene	0.082	2.829	0.2829	
β-Pinene	0.082	2.301	0.2301	
δ-3-Carene	0.082	1.976	0.1976	
Eucalyptol	0.082	1.423	0.1423	
Linalool	0.082	0.549	0.0549	
Terpinolene	0.082	0.406	0.0406	
β-Myrcene	0.082	0.387	0.0387	
Isopulegol	0.082	0.141	0.0141	
γ-Terpinene	0.082	0.137	0.0137	
α-Humulene	0.082	0.137	0.0137	
Camphene	0.082	0.133	0.0133	
trans-Ocimene	0.029	0.124	0.0124	
p-Cymene	0.082	0.114	0.0114	
α-Terpinene	0.082	0.092	0.0092	
α-Bisabolol	0.082	<LOQ	<LOQ	
Caryophyllene Oxide	0.082	<LOQ	<LOQ	
cis-Nerolidol	0.053	<LOQ	<LOQ	
cis-Ocimene	0.053	<LOQ	<LOQ	
Geraniol	0.082	<LOQ	<LOQ	
Guaiol	0.082	<LOQ	<LOQ	
trans-Nerolidol	0.029	<LOQ	<LOQ	

Cannabinoid Relative Concentration

Analyzed by 300.18 UHPLC/PDA

<LOQ Δ9-THC + Δ8-THC 17.702 mg/g CBD Not Tested
 pH: NT
 Aw: NT

18.024 mg/g Total Cannabinoids Not Tested Homogeneity

Compound	LOQ mg/g	Mass mg/g	Mass %	Relative Concentration
CBC	0.049	0.162	0.0162	
CBCa	0.049	<LOQ	<LOQ	
CBD	0.049	17.702	1.7702	
CBDa	0.049	<LOQ	<LOQ	
CBDV	0.049	0.092	0.0092	
CBDVa	0.049	<LOQ	<LOQ	
CBG	0.049	0.068	0.0068	
CBGa	0.049	<LOQ	<LOQ	
CBL	0.049	<LOQ	<LOQ	
CBN	0.049	<LOQ	<LOQ	
Δ8-THC	0.049	<LOQ	<LOQ	
Δ9-THC	0.049	<LOQ	<LOQ	
THCa	0.049	<LOQ	<LOQ	
THCV	0.049	<LOQ	<LOQ	
THCVa	0.049	<LOQ	<LOQ	

1 Unit = DOTE Topical, 25.526g
 Total THC = 0.877 x THC-A + Δ9-THC + Δ8-THC; Total CBD = CBDa * 0.877 + CBD



Benjamin G.M. Chew, Ph.D.
 Benjamin G.M. Chew, Ph.D.
 Laboratory Director

Glen Marquez
 Glen Marquez
 Quality Control



4439 Polaris Ave
 Las Vegas, NV
 (702) 728-5180

www.dblabslv.com

This report is considered highly confidential and the sole property of the customer. DB Labs will not discuss any part of this study with personnel other than those authorized by the client. The results described in this report only apply to the samples analyzed. The reported result is based on a sample weight with the applicable moisture content for that sample. LOQ = Limit of Quantitation. Pesticide LOQ = Instrument Limit of Quantitation, NA = Not Analyzed, ND = Not Detected, NR = Not Reported, NT = Not Tested. PGR = Plant Growth Regulator. Unless otherwise stated all quality control samples performed within specifications established by the Laboratory. This product has been tested by DB Labs, LLC (MME# 61887736101164525768) using valid testing methodologies and a quality system as required by Nevada state law. Edibles are picked up prior to final packaging unless otherwise stated. Values reported relate only to the product tested. The uncertainty of measurement associated with the measurement result reported in this certificate is available from the organization upon request. DB Labs makes no claims as to the efficacy, safety or other risks associated with any detected or non-detected levels of any compounds reported herein. This Certificate shall not be reproduced except in full, without the written approval of DB Labs.



Certificate of Analysis

Powered by Confident Cannabis

Dote Wellness

Sample: 2202DBL0235.1232

Las Vegas, NV 89115
 hello@dotewellness.com
 (844) 264-3386
 Lic. #

METRC Sample:
 Lot #: 022222RC01

Strain: Calm
 Ordered: 02/24/2022; Sampled: 02/24/2022; Completed: 03/01/2022; Harvest/Production Date: 02/22/2022

DOTE Topical

Topical, Lotion, CO2



Pesticides		Pass			
Analyzed by 300.9 LC/MS/MS and GC/MS/MS					
Compound	LOQ	Limit	Mass	Status	
	PPB	PPB	PPB		
Abamectin	10	0	<LOQ	Pass	
Acequinocyl	10	4000	<LOQ	Pass	
Bifenazate	10	400	<LOQ	Pass	
Bifenthrin	10	0	<LOQ	Pass	
Cyfluthrin	10	2000	<LOQ	Pass	
Cypermethrin	10	0	<LOQ	Pass	
Daminozide	10	0	<LOQ	Pass	
Dimethomorph	10	2000	<LOQ	Pass	
Etoxazole	10	400	<LOQ	Pass	
Fenhexamid	10	1000	<LOQ	Pass	
Flonicamid	10	1000	<LOQ	Pass	
Fludioxonil	10	500	<LOQ	Pass	
Imidacloprid	10	500	<LOQ	Pass	
Myclobutanil	10	400	<LOQ	Pass	
Paclobutrazol	10	0	<LOQ	Pass	
Piperonyl Butoxide	10	3000	<LOQ	Pass	
Pyrethrins	10	2000	<LOQ	Pass	
Quintozene	10	800	<LOQ	Pass	
Spinetoram	10	1000	<LOQ	Pass	
Spinosad	10	1000	<LOQ	Pass	
Spirotetramat	10	1000	<LOQ	Pass	
Thiamethoxam	10	400	<LOQ	Pass	
Trifloxystrobin	10	1000	<LOQ	Pass	
Plant Growth Regulators	10	50	<LOQ	Pass	

Microbials		Pass			
Analyzed by 300.1 Plating/QPCR					
Quantitative Analysis	LOQ	Limit	Mass	Status	
	CFU/g	CFU/g	CFU/g		
Aerobic Bacteria	9	100000	<LOQ	Pass	
Bile-Tolerant Gram-Negative Bacteria	90	1000	<LOQ	Pass	
Yeast & Mold	9	10000	<LOQ	Pass	
Qualitative Analysis	Detected or Not Detected			Status	
E Coli	Not Detected			Pass	
Salmonella	Not Detected			Pass	

Mycotoxins		Not Tested			
Analyzed by 300.2 Elisa					
Mycotoxin	LOQ	Limit	Mass	Status	

Heavy Metals		Pass			
Analyzed by 300.8 ICP/MS					
Element	LOQ	Limit	Mass	Status	
	PPB	PPB	PPB		
Arsenic	57	2000	<LOQ	Pass	
Cadmium	57	820	<LOQ	Pass	
Lead	57	1200	<LOQ	Pass	
Mercury	57	400	<LOQ	Pass	

Residual Solvents		Pass			
Analyzed by 300.13 GC/FID and GC/MS					
Compound	LOQ	Limit	Mass	Status	
	PPM	PPM	PPM		
Butanes	53	500	<LOQ	Pass	
Ethanol	53		<LOQ	Tested	
Heptanes	53	500	<LOQ	Pass	
Propane	53	500	<LOQ	Pass	



Benjamin G.M. Chew
 Benjamin G.M. Chew, Ph.D.
 Laboratory Director

Glen Marquez
 Glen Marquez
 Quality Control



4439 Polaris Ave
 Las Vegas, NV
 (702) 728-5180
 www.dblabslv.com

This report is considered highly confidential and the sole property of the customer. DB Labs will not discuss any part of this study with personnel other than those authorized by the client. The results described in this report only apply to the samples analyzed. The reported result is based on a sample weight with the applicable moisture content for that sample. LOQ = Limit of Quantitation. Pesticide LOQ = Instrument Limit of Quantitation. NA = Not Analyzed. ND = Not Detected. NR = Not Reported. NT = Not Tested. PGR = Plant Growth Regulator. Unless otherwise stated all quality control samples performed within specifications established by the Laboratory. This product has been tested by DB Labs, LLC (MME# 61887736101164525768) using valid testing methodologies and a quality system as required by Nevada state law. Edibles are picked up prior to final packaging unless otherwise stated. Values reported relate only to the product tested. The uncertainty of measurement associated with the measurement result reported in this certificate is available from the organization upon request. DB Labs makes no claims as to the efficacy, safety or other risks associated with any detected or non-detected levels of any compounds reported herein. This Certificate shall not be reproduced except in full, without the written approval of DB Labs.