

# INSTALLATION MANUAL

7052

ecolight



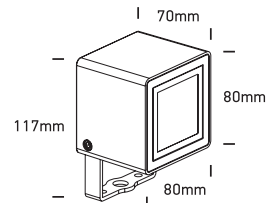
80  
CRI



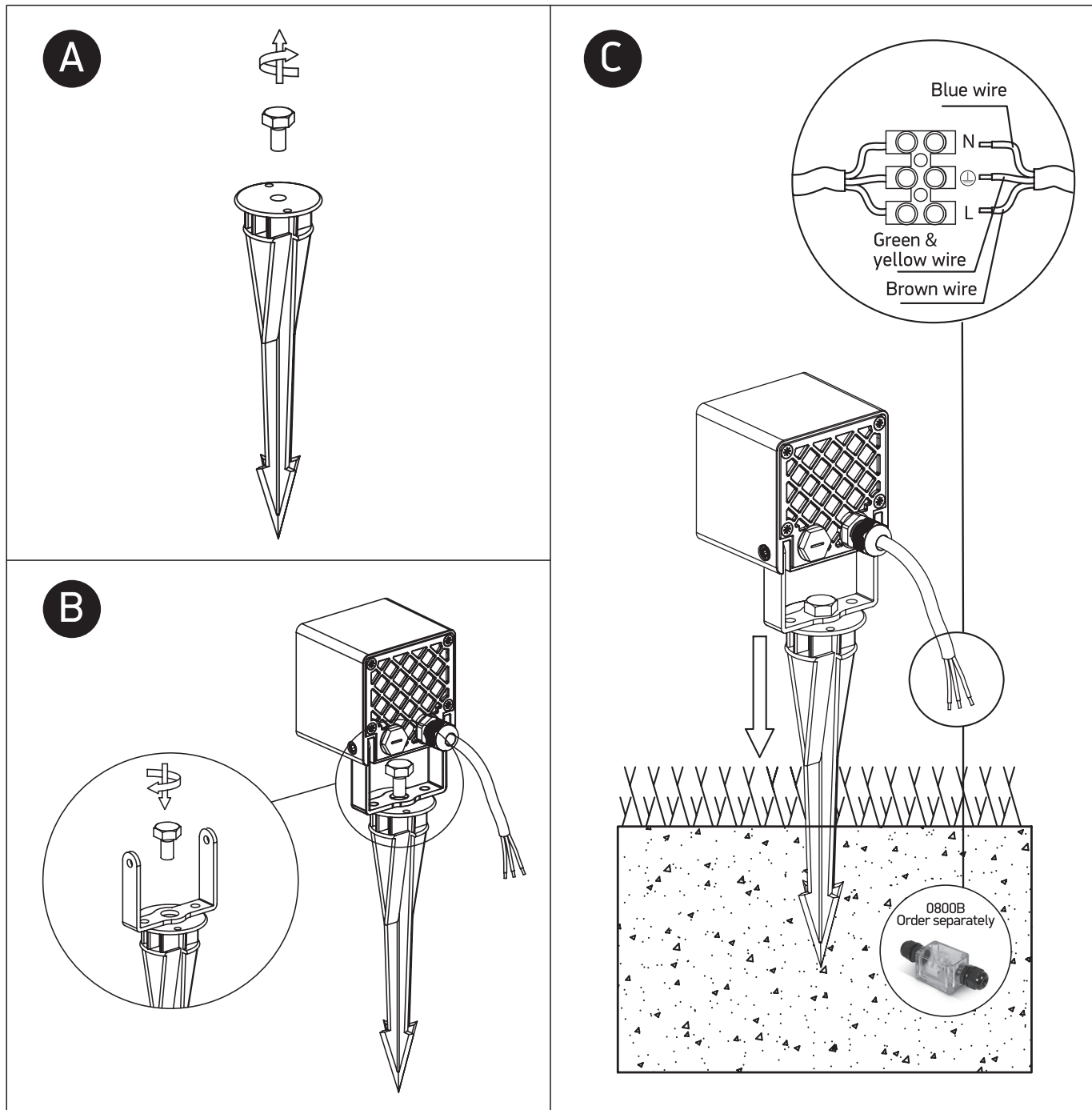
100-240V | 7W | IP65 | Die cast | Adjustable

Complete with driver.  
Supplied with spike.

100cm  

one  
LIGHT



## Warnings:

1. Make sure that the product is installed properly before connecting to electricity.
2. Do not cover the fitting.
3. Maintenance and installation should only be carried out by a professional electrician.