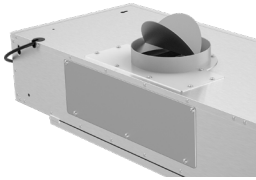
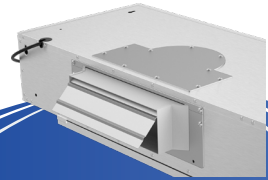


6" Height  
Under Cabinet Series

Manual Version: 2024A  
For Models: RH-C06-FC  
RH-R06-FC



RH-C06 Models

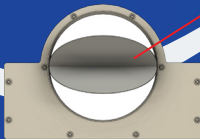


RH-R06 Model

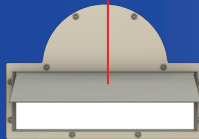
**Air Damper**

**Caution!**

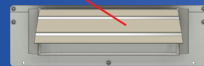
**Make sure the air damper can open freely after the installation.**



6" Top  
Round Adapter



3-1/4" x 10" Top  
Rectangular Adapter



3-1/4" x 10" Rear  
Rectangular Adapter

- \* The adapters are interchangeable between RH-C06 & RH-R06 models.
- \* Contact us if you wish to exchange your existing adapter to a different one.

**\* Unpack & Check for Shipping Damages \***

**\* Test Run Before Installation \***

# Steps To Test Run Before Installation

---

## IMPORTANT!

*Wear gloves to protect against sharp edges.*

**PLEASE FOLLOW THESE INSTRUCTIONS TO TEST THE RANGE HOOD BEFORE INSTALLATION FOR ANY DEFECTS OR SHIPPING DAMAGE:**

1. Remove the range hood and accessories from the package carefully.
2. Place the range hood on a flat stable surface, remove the baffle filter and check for any dents or damages on the range hood body.
3. Remove the loosen parts if there's any.
4. Plug the range hood into a 120V AC power source. Press the power button once and then any of the speed buttons to turn it on.
5. Check each speed variation and pay attention to the noise level to make sure there isn't any unusual noise besides it coming from the wind blowing. Press the Light Button to check the lights.
6. Verify all functions, as instructed in Page 9, are working properly.
7. Refer to Range Hood Troubleshooting in Page 12 for general issues and solutions.

Please read all instructions carefully before proceeding further to prevent the risk of fire, electric shock, personal injury or damage to the range hood. This manual provides a general insight on the installation and may not include solutions for all possible issues that may occur.

In case of this manual destroyed or lost, please visit <https://www.awoco.com> and download a digital version.

## INSTALLATION OVERVIEW

1. Unpack the range hood and check for any physical damage on the body.
2. Test run the range hood and check if all functions are working properly. Refer to Page 9 for functionalities.

### **STOP!**

**DO NOT** install the range hood if it's defective. Contact the seller immediately.

3. If all is fine, install the range hood as instructed in this manual. Refer to Page 7.
4. Test run the range hood again when the installation is finished. Refer to Page 12 for troubleshooting.

## POSSIBLE TOOLS NEEDED:

- Marker / Pencil;
- Jig Saw or Reciprocating Saw;
- Screwdrivers or Power Drill;
- Level;
- Measuring Tape;
- Knife;
- Duct / Foil Tape;
- Screws.

**2 PEOPLE ARE REQUIRED FOR THE INSTALLATION.**



<b>Important Safety Instructions</b>	<b>4</b>
<b>Installation Preparations</b>	<b>5</b>
Venting Requirements	5
Venting System Setup	5
Minimum Duct Size	6
Electrical Requirement	6
<b>Installation</b>	<b>7</b>
Installing the Range Hood	7
Connecting the Vent System	7
Electrical Connection	7
Installing the Baffle Filters	8
Installing the Oil Collector	8
Completing the Installation	8
<b>Range Hood Use</b>	<b>9</b>
Range Hood Control Panel	9
<b>Range Hood Care</b>	<b>10</b>
Clean the Exterior Surfaces	10
Clean or Replace the Baffle Filters	10
Replace the LED Lamps	10
<b>Range Hood Troubleshooting</b>	<b>12</b>
<b>Warranty</b>	<b>13</b>

# IMPORTANT SAFETY INSTRUCTIONS

---

## **TO REDUCE THE RISK OF FIRE, ELECTRIC SHOCK OR PERSONAL INJURY, PLEASE READ THE FOLLOWING CAREFULLY BEFORE ATTEMPTING TO ASSEMBLE, INSTALL, OPERATE OR MAINTAIN THE RANGE HOOD:**

- Always disconnect, lock and tag the power source before installing or servicing the range hood. Failure to do so may result in fire, shock or serious injury.
- Installation and electrical wiring must be done by qualified technician(s) in accordance with all applicable codes and standards, including fire-rated construction.
- When cutting or drilling into walls or ceilings, please be careful not to damage any electrical wirings and other hidden utilities.
- Verify and ensure the rated voltage and frequency of the range hood is in compliance with the nearby power source.
- Always unplug the range hood from the power source before cleaning it.
- Use the range hood only as directed in this manual. Do not use it to vent hazardous or explosive materials or vapors.
- Clean the baffle filters regularly to prevent it become blocked or clogged. Good air flow is essential for the range hood to work properly.
- Do not install, repair or replace any parts of the range hood unless you are instructed to do so by the manufacturer.
- Do not tamper with or modify the PCB.
- This range hood model requires a duct to vent the air outside. Do not vent the air into spaces within walls, ceilings, attics, crawl spaces or garages.

## **TO REDUCE THE RISK OF A RANGE TOP GREASE FIRE:**

- Never leave surface units unattended at high settings. Boilovers cause smoking and greasy spillovers that may ignite. Heat oils slowly on

low or medium settings.

- Always turn the hood ON when cooking at high heat or when flambing food (i.e. Crepes Suzette, Cherries Jubilee, Peppercorn Beef Flambé).
- Clean ventilating fans frequently. Grease should not be allowed to accumulate on the fan or filter.
- Use proper pan sizes. Always use cookware appropriate for the size of the surface element.

## **TO REDUCE THE RISK OF INJURY TO PERSONS IN THE EVENT OF A RANGE TOP GREASE FIRE:**

- **SMOTHER FLAMES** with a close-fitting lid, cookie sheet or metal tray, then turn off the burner. **BE CAREFUL TO PREVENT BURNS.** If the flames do not go out immediately, **EVACUATE AND CALL THE FIRE DEPARTMENT.**
- **NEVER PICK UP A FLAMING PAN** - you may be burned.
- **DO NOT USE WATER**, including wet dish cloths or towels - a violent steam explosion may result.
- Use a fire extinguisher **ONLY** if:
  - You have a Class ABC extinguisher, and you already know how to operate it.
  - The fire is small and contained in the area where it started.
  - The fire department is being called.
  - You can fight the fire with your back to an exit.

## **TO REDUCE THE RISK OF PERSONAL INJURY IN THE EVENT OF A GAS LEAK:**

- Extinguish any open flame.
- **DO NOT** turn on the lights or any type of appliance.
- Open all doors and windows to disperse the gas. If you still smell the gas, call the gas company, fire department, or 911 immediately.

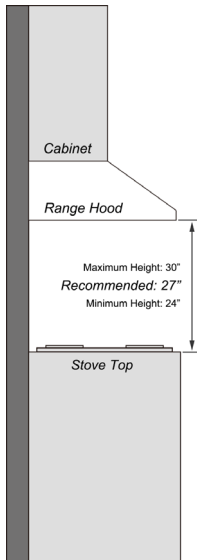
# Read and Save These Instructions

# INSTALLATION PREPARATIONS

## VENTING REQUIREMENTS

### DO

- Have the venting system go vertically from the range hood to the roof if possible.
- Have 24"-30" distance between the cooktop and the range hood. 27" is recommended.
- Use uniformed duct of 6" round duct or 3-1/4 x 10" rectangular duct or larger.
- Use metal duct only. Rigid metal duct is recommended. Semi-rigid aluminum duct is also acceptable for easy connection. Please refer to your city building code for vent requirement.
- Make sure there is a minimum of 24" of straight vent between the elbows if more than 1 elbow is used.
- Use minimal numbers of elbows and the shortest route for the venting system for a better performance.
- Use aluminum foil tape or duct tape to seal all joints in the venting duct system.
- Use caulking silicone to seal exterior wall or roof opening around the cap.
- Always keep the duct clean to ensure proper airflow.



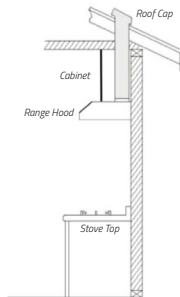
### DO NOT

- End the venting system in an enclosed area indoors.
- Use plastic vent.
- Use no more than three 90° elbows.
- Install 2 elbows together.
- Install the range hood outside of the recommended height.
- Reduce the duct size below the recommended size.

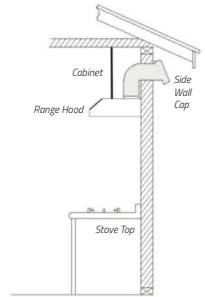
## VENTING SYSTEM SETUP

- For RH-C06 series: This range hood is 6" round or 3-1/4 x 10" rectangular top venting through the roof or wall.
- For RH-R06 series: This range hood is 3-1/4 x 10" rectangular rear venting through the wall.

**Top Venting Roof Exhaust**

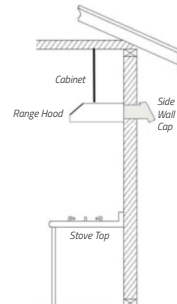


**Top Venting Wall Exhaust**



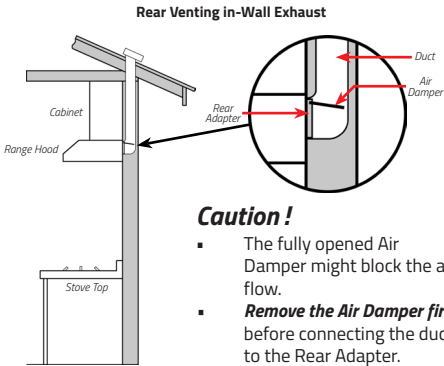
*\* For RH-C06 Series*

**Rear Venting Wall Exhaust**



*\* For RH-R06 Series*

# INSTALLATION PREPARATIONS



## Caution!

- The fully opened Air Damper might block the air flow.
- **Remove the Air Damper first** before connecting the duct to the Rear Adapter.

## IMPORTANT!

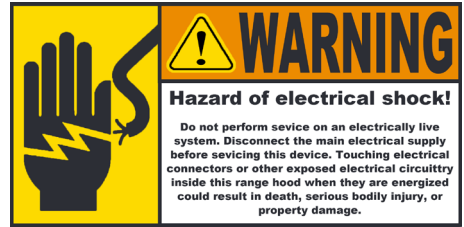
- If long duct run is needed, increase the duct size from 6" to 7" or 8" to 9".
- If a reducer is needed, use a long reducer instead of a pancake reducer and install it as far away from the range hood as possible. Reducing the duct size will restrict and decrease the speed of the airflow and hence lower the range hood's performance.
- If transitions or turns are needed, install them as far away from the range hood as possible and keep the distance between the 2 as far apart as possible.
- The minimum mounting height should be no less than 24" and the maximum mounting height should be no more than 30".
- Also refer to the owner's manual of the stove top for the height clearance requirement and the recommended mounting height above the range.

## Note

- *It is important to install the range hood at the proper mounting height. Hoods mounted too low could result in heat damage and fire hazard while hoods mounted too high will be out of reach and hence reduce its performance and efficiency.*

## MINIMUM DUCT SIZE

- Round: 6" minimum.
- Rectangular: 3-1/4" x 10" minimum.



## IMPORTANT!

**Observe all governing codes and ordinances.**

It is the customer's responsibility:

- To contact a qualified electrical installer;
- To ensure that the electrical installation is in compliance with applicable codes and standards.

## ELECTRICAL REQUIREMENTS

- A 120V, 60Hz., AC only, 3A fused electrical circuit is required.
- Wire sizes and connections must conform with the power rating of the range hood and all applicable codes and standards.
- DO NOT have a fuse in the neutral or ground circuit.
- The 3-prong outlet should be grounded. If the power cord plug is not used, the power cord's green wire should be connected to ground. Check with a qualified electrician if you are not sure that the range hood is properly grounded.
- DO NOT ground to a gas pipe.
- The range hood must be connected with copper wire/plug only.
- The range hood should be connected directly to the fused disconnect box (or circuit breaker) through flexible armored or non-metallic sheathed copper cable. ETL listed strain relief must be provided at each end of the power supply cable.

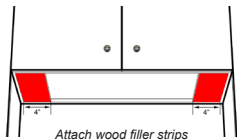
# INSTALLATION

This range hood series can be:

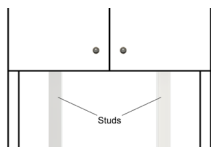
- Installed under the cabinet ONLY.

## 1. Installing the Range Hood Under the Cabinet

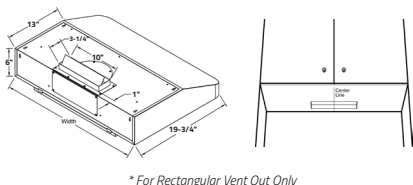
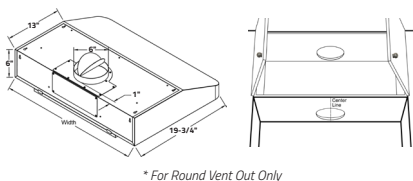
- For installing under the cabinet with recessed bottom, attach a 4" wide wood filler strip (not provided) on each side.



- Use a stud finder to locate and mark 2 studs inside the wall.



- Make 2 cutouts on the top and bottom of the cabinet that align with the outlet of the top vent on the Hood. The diameter of the cutout should be slightly larger than the diameter of the duct.



The following steps require 2 or more people:

- Draw the power cord through the bottom cutout and align the range hood beneath the cabinet so that the exhaust on the Hood and the cutout are in line.
- Raise and screw the top of the Hood to

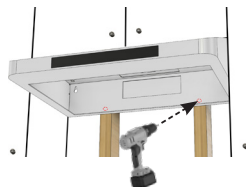
the bottom of the cabinet through the knockout holes shown below:



- Tighten all screws until the range hood is securely mounted to the bottom of the cabinet.

**Make sure the range hood is securely mounted before releasing.**

- For a more secure installation, install additional screws into the pre-drilled holes on the backplate of the range hood to secure it to the studs or lumbers. If the pre-drilled holes don't align with the studs or lumbers, drill new holes on the backplate instead.



**Note**

**For rear venting, install the top cover and the rear vent adapter before the installation.**

## 2. Connecting the Vent System

- Use 6" round or 3-1/4 x 10" rectangular metal duct (or semi-rigid aluminum duct, follow the local building codes) to connect the exhaust on the Hood to the duct-work above.
- Use aluminum foil tape or duct tape to seal all connections.

## 3. Electrical Connection

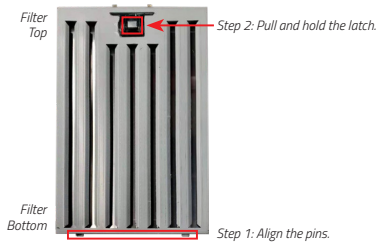
**WARNING: Electrical Shock Hazard. Disconnect power before servicing.**

# INSTALLATION

- In case of a direct connection to the house wiring is preferred, do the following:
  - Disconnect the power.
  - Cut off the plug from the power cord.
  - Connect the wires from the power cord to the wires from the house wiring using UL listed wire connectors.
  - Store the excess wires in the wiring box.
  - Reconnect the power.

## 4. Installing the Baffle Filters

- Peel off the protective film from the baffle filters if there's any.
- Align the baffle filter's bottom pins to the holes on the hood. (*Step 1*)
- Pull and hold the latch. The top pins of the baffle filter will retract into the filter while the latch is pulled. (*Step 2*)



- Keep pulling and holding the latch and push the top end of the baffle filter upwards till it reaches the hood.
- Release the latch to lock the baffle filter in place.
- Repeat these steps to install the rest of the baffle filters.

### Note

- *Make sure all baffle filters are securely locked and won't come off.*
- *These Baffle Filters collect the oil/grease while you cook. There's no need to install other types of filters.*
- *Clean the Baffle Filters every 2 to 3 months regularly. Follow the cleaning guide in Page 10.*

## 5. Installing the Oil Collector

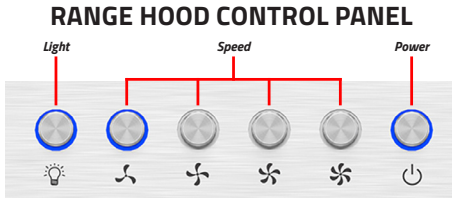
- Follow the instruction in **Page 10** to install the Oil Collector.

## 6. Completing the Installation

Turn power ON in the control panel. Check all lights and fan operations.



# RANGE HOOD USE



## LIGHT - 2 LIGHT LEVELS

- Press the **Light** button once and the lamps will turn on at the max light level.
- Press the **Light** button again and the lamps will go down to the next light level.
- Press the **Light** button the 3rd time and the lamps will turn off.
- The Light button operates independently from the **Power** button. It works even when the range hood is not turned on.
- The **Delayed Auto Shut Off** function will turn off the **Light** automatically when the timer reaches 0.

## SPEED

### Note

The Power button must be pressed once before any speed mode can be selected.

- **There are 4 speeds you can choose from: Quiet, Low Speed, Medium Speed and High Speed.**
  - Pressing any of the speed buttons will set the Blower Unit to the speed the button designates.

Button	Speed
	Quiet - Generate less noise, perfect for light cookings.
	Low Speed
	Medium Speed
	High Speed

## POWER

- Press the **Power** button once and the Range Hood will be activated in standby mode, **then press one of the Speed buttons to set the speed of the Range Hood.**
- Press the Power button again will activate the Delayed Auto Shutoff function.
- Press the Power button the 3rd time will shutoff the range hood immediately.

## DELAYED AUTO SHUT-OFF

- When the hood is operating in any speed, press the Power button once will activate the Delayed Auto Shutoff function. The range hood will shutoff automatically in 3 minutes.
- While the Delayed Auto Shutoff function is activated, press the Power button again and the hood will shutoff immediately.

## WARNING

### Read all instructions and warnings before using the hood.

- DO NOT use the hood when there are no safety grills and filters.
- NEVER dispose cigarette ashes, ignitable substances, or any foreign objects into blowers.
- NEVER leave the cooking appliances unattended. When frying, the oil in the pan can easily overheat and catch on fire. The risk of self-combustion is higher when the oil has been used several times.
- NEVER cook on "open" flames under the range hood. Check deep-fryers during use: Superheated oil may be flammable.

# RANGE HOOD CARE

## CLEANING

### WARNING

- To reduce the risk of electrical shock, DO NOT clean the hood while it's operating.
- Never put your hands into the area housing the fan when the fan is operating.

### *Cleaning the Exterior Surfaces:*

### IMPORTANT

#### To avoid damage to the exterior surfaces:

- DO NOT use corrosive or abrasive detergent.
- DO NOT use steel wool, scoring pad or steel brushes. Use a paper towel or soft cloth or nonabrasive sponge instead.
- DO NOT use salt solutions, disinfectants, bleaches or cleaning compound that contains harmful chemicals.

#### Cleaning Method:

- Noncorrosive or nonabrasive liquid detergent soap or all-purpose liquid cleanser.
- Wipe the surfaces with a damp paper towel or soft cloth or nonabrasive sponge.
- Rinse with clean water.
- Wipe dry with dry towel or cloth.

### Note

- The nonabrasive stainless steel polisher can be applied when done cleaning to retain the stainless luster and grain.
- Always follow the instruction of the polisher.

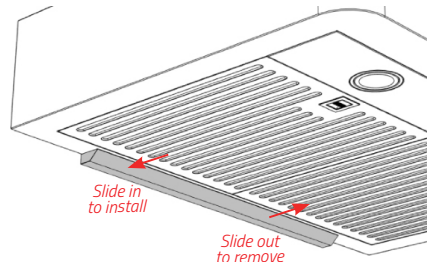
### *Cleaning the Stainless Steel Baffle Filters:*

- Pull the spring release handle and remove the filter by pulling it down.
- Wash the filters in the dishwasher, or soak it into hot or warm water with dish detergent for half an hour, then wipe the filter clean. Repeat these steps until there's no oil residue remains.
- Let the filters dry thoroughly.
- Make sure the spring release handle is toward the front, align and insert the filter.

- Pull the spring release handle and push the filter into position.
- Release the handle.
- Repeat the steps for the remaining filters.

### *Cleaning the Oil Collector:*

- Hold the oil collector at both ends and slide it toward the user to detach it from the hood body. Do this in reverse to install the oil collector back to the slot after it's been cleaned and dried completely.
- Wash the oil collector in the dishwasher, or soak it into hot or warm water with dish detergent for half an hour, then wipe the filter clean. Repeat these steps until there's no oil residue remains.
- Wipe off the excess water from the oil collector and put it in a safe location to let it dry completely.



## REPLACING THE FILTERS

- Replace the baffle filters immediately should they become worn out due to aging or prolonged usage.

## REPLACING THE LED LAMPS

### WARNING

#### Electrical Shock Hazard

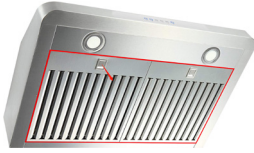
#### Disconnect power before servicing

#### Wear gloves to protect against sharp edges

- This range hood uses 12V, 2W LED. Contact Awoco customer service to get the replacement LED lights.
- Unplug the range hood, or turn off the breaker.
- Remove the Baffle Filter adjacent to the Lamp.

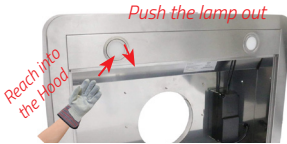
## RANGE HOOD CARE

---



*Remove  
Baffle  
Filters*

- Reach into the Hood Unit and push the Lamp out from the inside of the Hood Unit.



*Push the lamp out*

*Reach into  
the Hood*

- Disconnect the wires.
- Connect the wires to the new Lamp.
- Align and put the new Lamp back into position.
- Press the edge of the new Lamp until it touches the bottom of the Hood Unit.
- Put the Baffle Filter back into place.
- Plug in the range hood, or turn on the breaker.
- Check if the new Lamp is working properly.

# RANGE HOOD TROUBLESHOOTING

## Before Calling for Service

Issue	Possible Cause / Solution
The air damper does not open after installation	<p>If the air damper does not open freely when the hood turns on, the smoke can't be sucked out.</p> <ul style="list-style-type: none"><li>Remove the duct attached to the hood, clear any debris that are blocking the air damper, and make sure that the air damper can open freely before reconnecting the duct.</li></ul>
The range hood doesn't turn on	<ul style="list-style-type: none"><li>Check if the range hood is plugged in. Make sure that all power is turned ON, the fuse isn't blown and all electrical wirings are properly connected.</li></ul>
The range hood turns on but the LED light doesn't	<ul style="list-style-type: none"><li>Replace the defective LED assembly. Refer to Range Hood Care section for instructions.</li></ul>
The range hood vibrates when the blower is on	<ul style="list-style-type: none"><li>Check and tighten the mounting screws to secure the hood to the cabinet or wall properly.</li></ul>
The blower or fan seems weak	<ul style="list-style-type: none"><li>Check that the duct size used is at least 6" or 3-1/4 x 10". Range hood WILL NOT function efficiently with insufficient duct size. For example: 6" duct over 7" top vent and not sealed properly.</li><li>Check if the duct is clogged or the damper (half-circular flapper) is not installed correctly or opening properly. A tight mesh on a side wall cap might also cause restriction to the air flow.</li></ul>
The lights work but the blower is not spinning at all or is rattling	<ul style="list-style-type: none"><li>The blower might be jammed or scraping the bottom due to shipping damage.</li><li>Disconnect the power cord, remove the fan grill and the fan blade, might see the fan blade or/and motor is not in the proper position (offset from the center). Try to fix/adjust it or please contact us immediately.</li></ul>
The hood is not venting out properly	<ul style="list-style-type: none"><li>Make sure the distance between the stove top and the bottom of the hood is within recommended 24" and 30" in distance. *Due to different ceiling height configurations, the recommended height may not be applicable.</li><li>Reduce the number of elbows and length of duct work. Check if all joints are properly connected, taped and sealed.</li><li>Make sure the power is on high speed for heavy cooking.</li></ul>
The fan wheel is rattling or out of balance	<ul style="list-style-type: none"><li>Refer to our video guide on How to Adjust the Fan Wheel to Avoid Noises. (<a href="https://youtu.be/Aj-A1glvmw">https://youtu.be/Aj-A1glvmw</a>)</li><li>Disconnect the power cord, then remove the fan grill and release the screw in the center of the fan wheel. Take the fan wheel down and then reinsert the fan wheel back to the proper position and tighten the screw.</li><li>If the fan wheel is out of balance, locate and press on the higher side with moderate force to adjust its position. (This aluminum fan wheel can be adjusted by hand, please try it a few times until it is balanced.)</li></ul>

# WARRANTY

---

This product is warranted for a limited period of **THREE YEARS Parts, begins from the date of purchase.**

This limited warranty is applied to the original retail purchaser and valid only for products purchased for home use in the continental United States of America.

This limited warranty is non-transferable and does not extend to the subsequent owners of this product.

Any applicable implied warranties, including the warranty of merchantability, are limited in duration to a period of express warranty as provided herein beginning with the date of original purchase at retail and, no warranties, whether express or implied, shall apply to this product thereafter.

**In the event of the product fail to work properly due to a defect in manufacturing materials or workmanship under normal home use, during the warranty period mentioned above, subject to the conditions and limitations set forth below, Awoco will, at our options, either repair or replace any part of our products proven defective by reason of improper materials or workmanship:**

- Proof of original retail purchase is required to receive warranty service within the limited warranty period.
- Repair parts or replacement products will be provided by Awoco, free of charge, on an exchange basis, and will be either new or reconditioned.

### **This Limited Warranty Does Not Cover:**

- Consumable parts such as light bulbs, stainless steel baffle filters.
- The natural wear of finish, and wear due to improper maintenance, use of corrosive and abrasive cleaning products, pads, and oven cleaner products.
- Chips, dents or cracks on the product caused by transportation and handling.
- Damage of product caused by accidents, pests and vermin, lightning, wind, fire, floods or acts of God.

- Damage of product caused by unauthorized modification or alteration, or if it is used for other than the intended purpose, or any water leakage where the unit was not installed properly.
- Damage of product caused by incorrect electrical wiring, commercial or industrial use, or use of any cleaning products not recommended in this manual.
- Damage of product due to product misuse, abuse, improper installation, unauthorized repair or maintenance.
- Any loss of properties or any costs associated with removing, servicing, installing, or determining the source of problems with our products.

### **To Receive Warranty Service:**

- Contact the seller or distributor from which you purchase the product. Please confirm the terms of your dealer's or distributor's policies prior to contacting. Or contact us directly.
- Provide the product identification information, such as model number and lot number, and proof of original purchase.
- Describe the issue you are experiencing in detail.

### **Product Support and Additional Information:**

If you need assistance using your product or you would like to start the warranty service:

- Contact us at 1-888-412-3428, between 10 AM and 5 PM, Monday - Friday, Pacific Time.  
Or
- Contact us at <https://awoco.com/pages/contact-us>.



---

Website: [www.awoco.com](http://www.awoco.com)    Customer Support: 1-888-412-3428  
Email: [sales@awoco.com](mailto:sales@awoco.com)