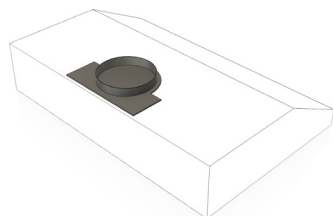
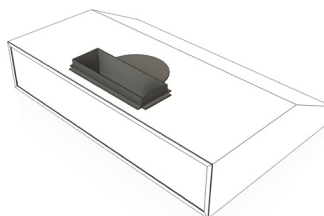




Ver. RH-SP-2020A



with  
6" or 8" Round Adaptor\*



with  
3-1/4" x 10" Rectangular Adaptor\*

**\*The Adaptor is pre-assembled upside-down on the hood body to save packaging space, please remove the screws and flip the Adaptor over for the correct assembling position.**

*\*Depending on the model that you purchased, an appropriate adaptor is included.*

*\*Individual adaptor is available for purchase separately.*

OWNER'S MANUAL

# Range Hood

RH-SP Split Under Cabinet Series



# HOW TO TEST RUN

## Steps To Test Run Before Installation

### IMPORTANT!

*Wear gloves to protect against sharp edges.*

*Please follow these instructions to **TEST THE RANGE HOOD BEFORE INSTALLATION** for any defect or shipping damage:*

1. Remove the range hood and accessories from the package carefully.
2. Place the range hood on a flat stable surface, remove the baffle filter and check for any dents or damages on the range hood body.
3. Remove the loosen parts if there's any.
4. **Match the wires color and connect the wires as instructed in the Wiring Diagram on the right** to connect the Blower Unit to the Hood Unit.
5. Plug the range hood into a 120V AC power source. Press the power button once and then any of the speed buttons to turn it on.
6. Check each speed variation and pay attention to the noise level to make sure there isn't any unusual noise besides it coming from the wind blowing. Press the Light Button to check the lights.
7. Verify all functions, as instructed in Page 10, are working properly.
8. Refer to Range Hood Troubleshooting in Page 12 for general issues and solutions.

### Note

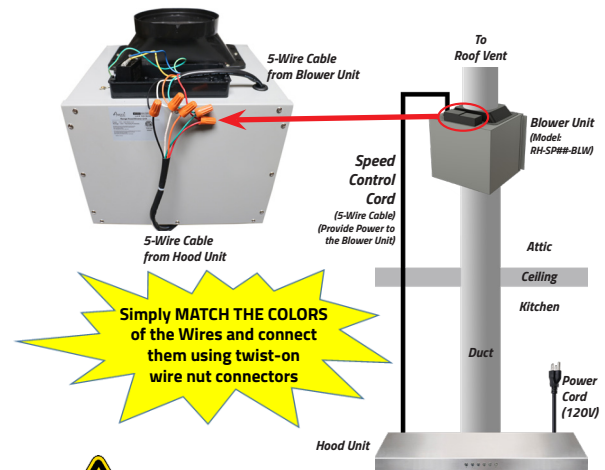
*Please don't suspect that a range hood without protective films is not a new product.*

- *The protective films on the body was removed to complete the brush finished polishment on the surface.*

*The Baffle Filters might be covered by protective films that can be removed with the following steps:*

- *Soak the Baffle Filters into hot waters or use heated air from a hair dryer to soften the films.*
- *Peel off the films from the corner.*

Wiring Diagram



**Electrical Hazard**

### Warning

- **DO NOT** plug in the Power Cord if these 5 wires are not connected to the Blower Unit!
- Exposed unconnected wires will cause personal injury and electrical damage to the motor that is not covered by the warranty.

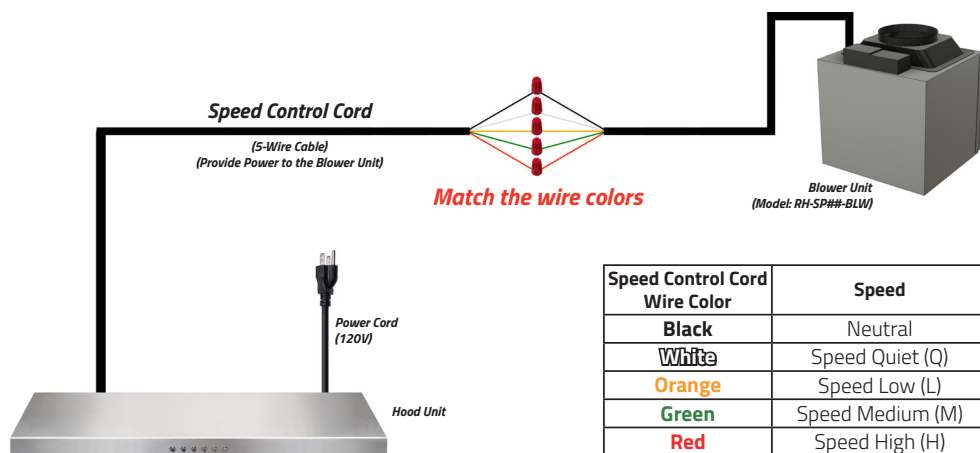
### Important

- This Wiring Diagram is for connecting the wires from RH-IT Hood Unit to an **Awoco Interior Blower Unit (Model: RH-SP##-BLW) ONLY**.
- If you have an **Awoco Exterior Blower Unit, or any Blower Unit from other Brands:**
  - **DO NOT CONNECT** the wires as shown in this Wiring Diagram. Any damage from false wiring is not covered by the warranty.
  - **Refer to your Blower Unit's USER MANUAL** for how to properly connect the wires.

# Table of Contents

<b>Important Safety Instructions</b>	<b>4</b>
<b>Installation Preparations</b>	<b>5</b>
Venting Requirements	5
Venting System Setup	5
Electrical Requirement	6
<b>Installation</b>	<b>7</b>
Installing the Hood Unit	7
Installing the Blower Unit	8
Electrical Connection	8
Installing the Baffle Filters	8
Completing the Installation	8
<b>Range Hood Use</b>	<b>10</b>
Range Hood Control Panel	10
<b>Range Hood Care</b>	<b>11</b>
Clean the Exterior Surfaces	11
Clean or Replace the Baffle Filters	11
Replace the LED Lamps	11
<b>Range Hood Troubleshooting</b>	<b>12</b>
<b>Warranty</b>	<b>13</b>

## Wire Colors and Speeds



### Important

- This Diagram is for connecting the wires from RH-IT Hood Unit to an **Awoco Interior Blower Unit (Model: RH-SP##-BLW) ONLY**.
- If you have an **Awoco Exterior Blower Unit, or any Blower Unit from other Brands**:
  - **DO NOT CONNECT** the wires as shown in this Wiring Diagram. Any damage from false wiring is not covered by the warranty.
  - Refer to your Blower Unit's **USER MANUAL** for how to properly connect the wires.

# IMPORTANT SAFETY INSTRUCTIONS

---

## **TO REDUCE THE RISK OF FIRE, ELECTRIC SHOCK OR PERSONAL INJURY, PLEASE READ THE FOLLOWING CAREFULLY BEFORE ATTEMPTING TO ASSEMBLE, INSTALL, OPERATE OR MAINTAIN THE RANGE HOOD:**

- Always disconnect, lock and tag the power source before installing or servicing the range hood. Failure to do so may result in fire, shock or serious injury.
- Installation and electrical wiring must be done by qualified technician(s) in accordance with all applicable codes and standards, including fire-rated construction.
- When cutting or drilling into walls or ceilings, please be careful not to damage any electrical wirings and other hidden utilities.
- Verify and ensure the rated voltage and frequency of the range hood is in compliance with the nearby power source.
- Always unplug the range hood from the power source before cleaning it.
- Use the range hood only as directed in this manual. Do not use it to vent hazardous or explosive materials or vapors.
- Clean the baffle filters regularly to prevent it become blocked or clogged. Good air flow is essential for the range hood to work properly.
- Do not install, repair or replace any parts of the range hood unless you are instructed to do so by the manufacturer.
- Do not tamper with or modify the PCB.
- This range hood model requires a duct to vent the air outside. Do not vent the air into spaces within walls, ceilings, attics, crawl spaces or garages.

## **TO REDUCE THE RISK OF A RANGE TOP GREASE FIRE:**

- Never leave surface units unattended at high settings. Boilovers cause smoking and greasy

spillovers that may ignite. Heat oils slowly on low or medium settings.

- Always turn the hood ON when cooking at high heat or when flambeing food (i.e. Crepes Suzette, Cherries Jubilee, Peppercorn Beef Flambé).
- Clean ventilating fans frequently. Grease should not be allowed to accumulate on the fan or filter.
- Use proper pan sizes. Always use cookware appropriate for the size of the surface element.

## **TO REDUCE THE RISK OF INJURY TO PERSONS IN THE EVENT OF A RANGE TOP GREASE FIRE:**

- **SMOTHER FLAMES** with a close-fitting lid, cookie sheet or metal tray, then turn off the burner. **BE CAREFUL TO PREVENT BURNS.** If the flames do not go out immediately, **EVACUATE AND CALL THE FIRE DEPARTMENT.**
- **NEVER PICK UP A FLAMING PAN** - you may be burned.
- **DO NOT USE WATER**, including wet dish cloths or towels - a violent steam explosion may result.
- Use a fire extinguisher **ONLY** if:
  - You have a Class ABC extinguisher, and you already know how to operate it.
  - The fire is small and contained in the area where it started.
  - The fire department is being called.
  - You can fight the fire with your back to an exit.

## **TO REDUCE THE RISK OF PERSONAL INJURY IN THE EVENT OF A GAS LEAK:**

- Extinguish any open flame.
- **DO NOT** turn on the lights or any type of appliance.
- Open all doors and windows to disperse the gas. If you still smell the gas, call the gas company, fire department, or 911 immediately.

## Read and Save These Instructions

# INSTALLATION PREPARATIONS

Please read all instructions carefully before proceeding further to prevent the risk of fire, electric shock, personal injury or damage to the range hood. This manual provides a general insight on the installation and may not include solutions for all possible issues that may occur.

In case of this manual destroyed or lost, please visit <https://www.awoco.com> and download a digital version.

## Installation Overview

1. Unpack the range hood and check for any physical damage on the body.
2. Test run the range hood and check if all functions are working properly. Refer to Page 9 for functionalities.

**DO NOT** install the range hood if it's defective. Contact the seller immediately.

3. If all is fine, install the range hood as instructed in this manual. Refer to Page 7.
4. Test run the range hood again when the installation is finished. Refer to Page 11 for troubleshooting.

## Possible Tools Needed:

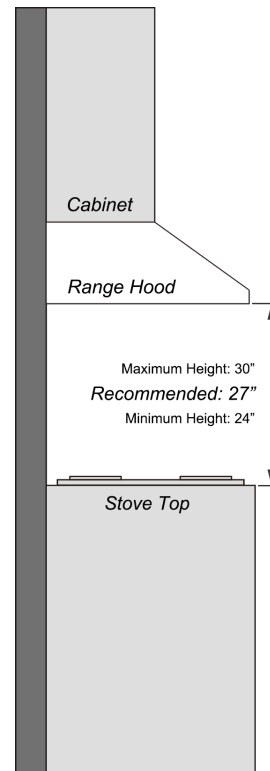
- Marker / Pencil;
- Jig Saw or Reciprocating Saw;
- Screwdrivers or Power Drill;
- Level;
- Measuring Tape;
- Knife;
- Duct / Foil Tape;
- Screws.

**2 PEOPLE ARE REQUIRED FOR THE INSTALLATION.**

## Venting Requirements

### DO

- Have the venting system go vertically from the range hood to the roof if possible.
- Have 24"-30" distance between the cooktop and the range hood. 27" is recommended.
- Use uniformed 6" round duct for 6" Round Adaptor, or 8" round duct for 8" Round Adaptor, or 3-1/4 x 10" rectangular duct or larger.
- Use metal vent only. Rigid metal vent is recommended. Semi-rigid aluminum vent is also acceptable for easy connection.
- Make sure there is a minimum of 24" of straight vent between the elbows if more than 1 elbow is used.
- Use minimal numbers of elbows and the shortest route for the venting system for a better performance.
- Use silver tap or duct tap to seal all joints in the venting system.
- Use caulking silicone to seal exterior wall or roof opening around the cap.
- Always keep the duct clean to ensure proper airflow.



# INSTALLATION PREPARATIONS

---

## **DO NOT**

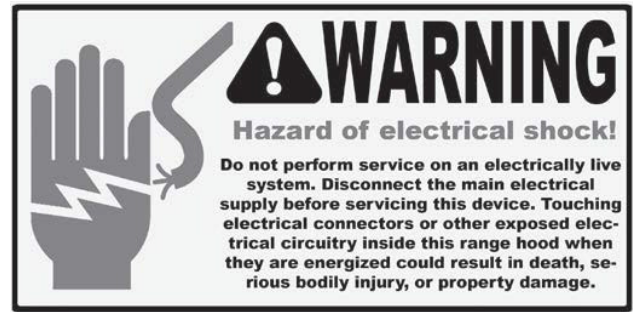
- End the venting system in an enclosed area indoors.
- Use plastic vent.
- Use no more than three 90° elbows.
- Install 2 elbows together.
- Install the range hood outside of the recommended height.
- Reduce the duct size below the recommended size.

## **IMPORTANT!**

- If long duct run is needed, increase the duct size from 6" to 7" or 8" to 9".
- If a reducer is needed, use a long reducer instead of a pancake reducer and install it as far away from the range hood as possible. Reducing the duct size will restrict and decrease the speed of the airflow and hence lower the range hood's performance.
- If transitions or turns are needed, install them as far away from the range hood as possible and keep the distance between the 2 as far apart as possible.
- Also refer to the owner's manual of the stove top for the height clearance requirement and the recommended mounting height above the range.

## **Minimum Duct Size:**

- Round: 6" minimum for 6" Round Adaptor.  
8" minimum for 8" Round Adaptor.
- Rectangular: 3-1/4" x 10" minimum.



## **IMPORTANT!**

### ***Observe all governing codes and ordinances.***

It is the customer's responsibility:

- To contact a qualified electrical installer;
- To ensure that the electrical installation is in compliance with applicable codes and standards.

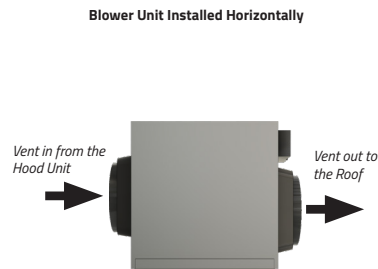
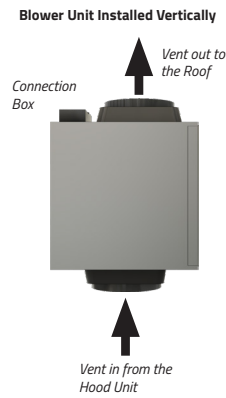
## **Electrical Requirements:**

- A 120V, 60Hz., AC only, 15A fused electrical circuit is required.
- Wire sizes and connections must conform with the power rating of the range hood and all applicable codes and standards.
- DO NOT have a fuse in the neutral or ground circuit.
- The 3-prong outlet should be grounded. If the power cord plug is not used, the power cord's green wire should be connected to ground. Check with a qualified electrician if you are not sure that the range hood is properly grounded.
- DO NOT ground to a gas pipe.
- The range hood must be connected with copper wire/plug only.
- The range hood should be connected directly to the fused disconnect box (or circuit breaker) through flexible armored or non-metallic sheathed copper cable. ETL listed strain relief must be provided at each end of the power supply cable.

# INSTALLATION

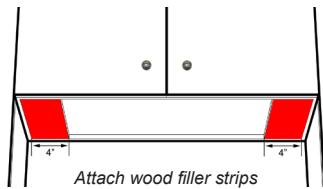
## Identify the Vent In and Out Openings on the Blower Unit

- The Blower Unit has Vent In and Vent Out on 2 opposite sides. One side with just a Vent In and the other side with a Black Speed Control Box and a Vent Out.

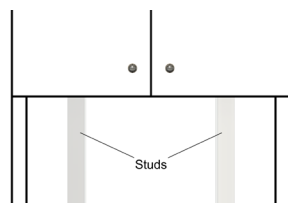


## Installing the Range Hood

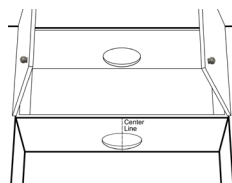
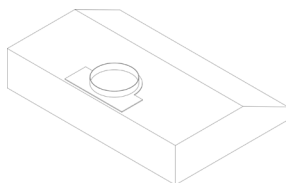
- For installing under the cabinet with recessed bottom, attach a 4" wide wood filler strip (not provided) on each side.



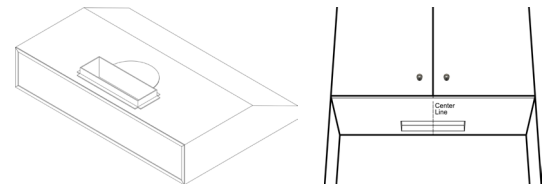
- Use a stud finder to locate and mark 2 studs inside the wall.



- Make 2 cutouts on the top and bottom of the cabinet that align with the outlet of the top vent on the hood. The diameter of the cutout should be slightly larger than the diameter of the duct.



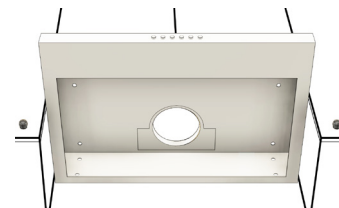
*\* For Models with Round Adaptor Only*



*\* For Models with Rectangular Adaptor Only*

## The following steps require 2 or more people:

- Draw the power cord through the bottom cutout and align the range hood beneath the cabinet so that the exhaust on the hood and the cutout are in line.
- Raise and screw the top of the hood to the bottom of the cabinet through the knockout holes shown below:



- Tighten all screws until the range hood is securely mounted to the bottom of the cabinet.

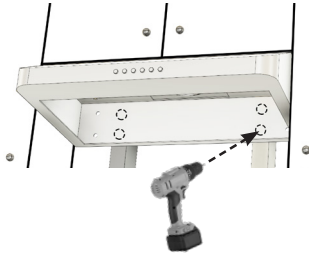
## ***Make sure the range hood is securely mounted before releasing.***

- For a more secure installation, install additional screws into the pre-drilled holes on the backplate of the range hood to secure it to the

# INSTALLATION

---

studs or lumbers. If the pre-drilled holes don't align with the studs or lumbers, drill new holes on the backplate instead.



## Connecting the Vent System

- Use 6" or 8" round, or 3-1/4 x 10" rectangular metal duct (or semi-rigid aluminum duct, follow the local building codes) to connect the exhaust on the hood to the duct-work above.
- Use foil tape or duct tape to seal all connections.

## Electrical Connection

**WARNING: Electrical Shock Hazard. Disconnect power before servicing.**

- In case of a direct connection to the house wiring is preferred, do the following:
  - Disconnect the power.
  - Cut off the plug from the power cord.
  - Connect the wires from the power cord to the wires from the house wiring using UL listed wire connectors.

## Installing the Blower Unit

- Install the mounting brackets to the edges of the Blower Unit with the screws provided.
- Install the Blower Unit onto the lumbers in the attic.
- Route the Speed Control Cord and Duct to the Blower Unit. Use duct elbows to make turns only when it's needed. Cut and remove the excess length when done routing.
- Connect the duct to the Blower Unit's vent in adapter routed from the Hood Unit.
- Connect the duct from the Blower Unit's vent out adapter to the roof or wall vent out.
- Connect the Duct from the roof to the vent

opening next to the Black Connection Box.

- Use foil tape or duct tape to seal all connections.
- Connect the Speed Control Cord from the Hood Unit to the Connection Box on the Blower Unit.  
**See Electrical Connection section below for how to properly connect the wires.**

## CAUTION

*For safety purpose, please connect a separate Ground Wire to the Blower Unit Chassis screw.*

**(Note, don't connect the Ground wire to Blower Unit's Green Speed Wire!!!)**

## Important

- If you have an **Awoco Exterior Blower Unit, or any Blower Unit from other Brands:**
  - **DO NOT CONNECT** the wires as shown in the Wiring Diagram. Any damage from false wiring is not covered by the warranty.
  - **Refer to your Blower Unit's USER MANUAL** for how to properly connect the wires.

## Electrical Connection

- **Connecting the Blower Unit to the Hood Unit** is as simple as "**Match Colors and Connect**":  
**Simply pick the wires with the same color from both ends and secure them with a wire nut connector.** (Refer to the Wiring Diagram in the Test Run section for how to connect the wires properly.)
- This range hood comes with a power cord with a 3-prong plug. Connect the power cord to a designated grounded standard 110V outlet.

## Warning

### **Before Plugging the Power Cord to the Outlet:**

- *Make sure all wires are connected properly between the Hood Unit and the Blower Unit.*
- *Insulate any spare wires with electrical tape to prevent them from touching each other which will result in a short circuit.*



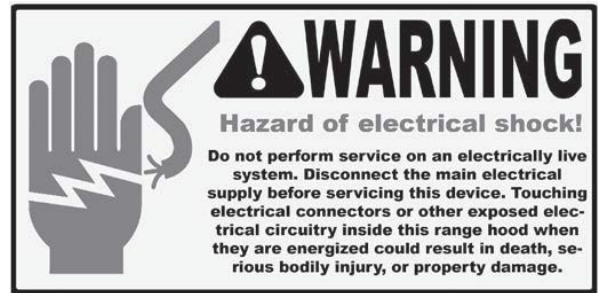
# INSTALLATION

---

## Electrical Shock Hazard

### Disconnect power before servicing

- In case of a direct connection to the house wiring is preferred, do the following:
  - Disconnect the power.
  - Cut off the plug from the power cord.
  - Connect the wires from the power cord to the wires from the house wiring using UL listed wire connectors.
  - Store the excess wires in the wiring box.
  - Reconnect the power.



## Installing the Baffle Filters

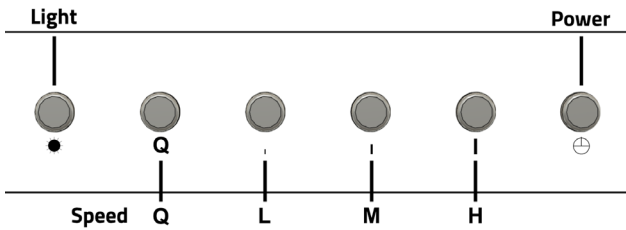
- Peel off the protective film from the baffle filters if there's any:
  - *Soak the Baffle Filters into hot waters or use heated air from a hair dryer to soften the films.*
  - *Peel off the films from the corner.*
- Align the baffle filters with the Hood Unit and install them from left to right.

## Completing the Installation

Turn power ON in the control panel. Check all lights and fan operations.

# RANGE HOOD USE

## Range Hood Control Panel



### ▪ Lamps/Light

- Press the **Light** button once and the lamps will turn on at maximum brightness.
- When the lamps are on, Press and Hold the **Light** button to reduce the brightness. Release the **Light** button when the desired brightness is reached.
- Press the **Light** button again and the lamps will turn off.
- The lamps can be turned off manually, or automatically with the **Delayed Auto Shut Off Function**.

### ▪ Speed Control

- There are 4 speed modes you can choose from: **Quiet, Low Speed, Medium Speed and High Speed.**

Button	Mode
Q	Quiet - <i>Generate less noise, perfect for light cookings.</i>
L	Low Speed
M	Medium Speed
H	High Speed

### Note

- *Pressing any of the speed buttons will turn on the range hood and set it to the speed the button designates.*
- *The last selected speed will be memorized and resumed the next time the range hood is turned on by pressing the power button.*

### ▪ Power

- Pressing the **Power** button can also **turn on and resume** the Range Hood to **the speed the last time used.**
- **After cooking, press the Power button once** will activate the **Delayed Auto Shutoff** function.
- **Quickly press the Power button twice** will **shut off** the range hood **immediately.**

### **3-Minute Delayed Auto Shut Off Function**

- *When the **range hood is running** at any speed, **press the Power button once** will **activate the Delayed Auto Shut Off function.** The countdown timer will start and the range hood will be shut off automatically in 3 minutes.*
- *While the Delayed Auto Shut Off function is activated, press the Power button again and the range hood will be shut off immediately.*

### WARNING

#### **Read all instructions and warnings in the Range Hood User Manual before using the hood.**

- DO NOT use the hood when there are no safety grills and filters.
- NEVER dispose cigarette ashes, ignitable substances, or any foreign objects into blowers.
- NEVER leave the cooking appliances unattended. When frying, the oil in the pan can easily overheat and catch on fire. The risk of self-combustion is higher when the oil has been used several times.
- NEVER cook on "open" flames under the range hood. Check deep-fryers during use: Superheated oil may be flammable.

# RANGE HOOD CARE

---

## Cleaning

### **WARNING**

- To reduce the risk of electrical shock, **DO NOT** clean the hood while it's operating.
- Never put your hands into the area housing the fan when the fan is operating.

## Cleaning the Exterior Surfaces

### **IMPORTANT**

#### **To avoid damage to the exterior surfaces:**

- **DO NOT** use corrosive or abrasive detergent.
- **DO NOT** use steel wool, scoring pad or steel brushes. Use a paper towel or soft cloth or nonabrasive sponge instead.
- **DO NOT** use salt solutions, disinfectants, bleaches or cleaning compound that contains harmful chemicals.

## Cleaning Method

- Noncorrosive or nonabrasive liquid detergent soap or all-purpose liquid cleanser.
- Wipe the surfaces with a damp paper towel or soft cloth or nonabrasive sponge.
- Rinse with clean water.
- Wipe dry with dry towel or cloth.

### **Note**

- The nonabrasive stainless steel polisher can be applied when done cleaning to retain the stainless luster and grain.
- Always follow the instruction of the polisher.

## Cleaning the Stainless Steel Baffle Filters

- Pull the spring release handle and remove the filter by pulling it down.
- Wash the filter in the top rack of the dishwasher or with warm soapy solution manually.
- Let the filters dry thoroughly.
- Make sure the spring release handle is toward the front, align and insert the filter.

- Pull the spring release handle and push the filter into position.
- Release the handle.
- Repeat the steps for the remaining filters.

## Replacing the Filters

- Replace the baffle filters immediately should they become worn out due to aging or prolonged usage.

## Replacing the LED Lamps

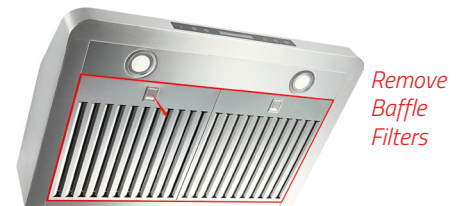
### **WARNING**

#### **Electrical Shock Hazard**

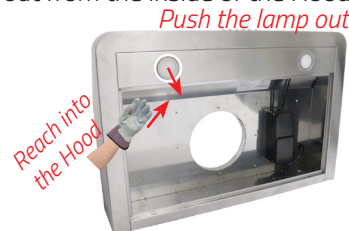
#### **Disconnect power before servicing**

#### **Wear gloves to protect against sharp edges**

- This range hood uses 12V, 3W LED. Contact Awoco customer service to get the replacement LED lights.
- Unplug the range hood, or turn off the breaker.
- Remove the Baffle Filter adjacent to the Lamp.



- Reach into the Hood Unit and push the Lamp out from the inside of the Hood Unit.



- Disconnect the wires.
- Connect the wires to the new Lamp.
- Align and put the new Lamp back into position.
- Press the edge of the new Lamp until it touches the bottom of the Hood Unit.
- Put the Baffle Filter back into place.
- Plug in the range hood, or turn on the breaker.
- Check if the new Lamp is working properly.

# RANGE HOOD TROUBLESHOOTING

## Before Calling for Service

Issue	Possible Cause / Solution
The range hood doesn't turn on	<ul style="list-style-type: none"> <li>Check if the range hood is plugged in. Make sure that all power is turned ON, the fuse isn't blown and all electrical wirings are properly connected.</li> </ul>
The range hood turns on but the LED light doesn't	<ul style="list-style-type: none"> <li>Replace the defective LED assembly. Refer to Range Hood Care section for instructions.</li> </ul>
The range hood vibrates when the blower is on	<ul style="list-style-type: none"> <li>Check and tighten the mounting screws to secure the hood to the cabinet or wall properly.</li> </ul>
The blower or fan seems weak	<ul style="list-style-type: none"> <li><b>Check that the duct size used is at least 6" and does not have sections with smaller sizes between the hood and the Roof/Wall Cap.</b> Range hood WILL NOT function efficiently with insufficient duct size. For example: 7" duct over 6" top vent and not sealed properly.</li> <li>Check if the duct is clogged or the damper (half-circular flapper) is not installed correctly or opening properly. A tight mesh on a side wall cap might also cause restriction to the air flow.</li> </ul>
The lights work but the blower is not spinning at all or is rattling	<ul style="list-style-type: none"> <li>The blower might be jammed or scraping the bottom due to shipping damage.</li> <li>Disconnect the power cord, remove the fan grill and the fan blade, might see the fan blade or/and motor is not in the proper position (offset from the center). Try to fix/adjust it or please contact us immediately.</li> </ul>
The hood is not venting out properly	<ul style="list-style-type: none"> <li>Make sure the distance between the stove top and the bottom of the hood is within recommended 24" and 30" in distance. *Due to different ceiling height configurations, the recommended height may not be applicable.</li> <li>Reduce the number of elbows and length of duct work. Check if all joints are properly connected, taped and sealed.</li> <li>Make sure the power is on high speed for heavy cooking.</li> </ul>

# WARRANTY

---

This product is warranted for a limited period of **ONE YEAR Parts, begins from the date of purchase.**

This limited warranty is applied to the original retail purchaser and valid only for products purchased for home use in the continental United States of America.

This limited warranty is non-transferable and does not extend to the subsequent owners of this product.

Any applicable implied warranties, including the warranty of merchantability, are limited in duration to a period of express warranty as provided herein beginning with the date of original purchase at retail and, no warranties, whether express or implied, shall apply to this product thereafter.

**In the event of the product fail to work properly due to a defect in manufacturing materials or workmanship under normal home use, during the warranty period mentioned above, subject to the conditions and limitations set forth below, Awoco will, at our options, either repair or replace any part of our products proven defective by reason of improper materials or workmanship:**

- Proof of original retail purchase is required to receive warranty service within the limited warranty period.
- Repair parts or replacement products will be provided by Awoco, free of charge, on an exchange basis, and will be either new or reconditioned.
- The consumer is responsible for all shipping costs.

## **This Limited Warranty Does Not Cover:**

- Consumable parts such as light bulbs, stainless steel baffle filters.
- The natural wear of finish, and wear due to improper maintenance, use of corrosive and abrasive cleaning products, pads, and oven cleaner products.
- Chips, dents or cracks on the product caused by transportation and handling.
- Damage of product caused by accidents, pests and vermin, lightning, wind, fire, floods or acts of God.
- Damage of product caused by unauthorized

modification or alteration, or if it is used for other than the intended purpose, or any water leakage where the unit was not installed properly.

- Damage of product caused by incorrect electrical wiring, commercial or industrial use, or use of any cleaning products not recommended in this manual.
- Damage of product due to product misuse, abuse, improper installation, unauthorized repair or maintenance.
- Any loss of properties or any costs associated with removing, servicing, installing, or determining the source of problems with our products.

## **To Receive Warranty Service:**

- Contact the seller or distributor from which you purchase the product. Please confirm the terms of your dealer's or distributor's policies prior to contacting. Or contact us directly.
- Provide the product identification information, such as model number and lot number, and proof of original purchase.
- Describe the issue you are experiencing in detail.

## **Product Support and Additional Information:**

If you need assistance using your product or you would like to start the warranty service:

- Contact us at 1-888-412-3428, between 9 AM and 5 PM, Monday - Friday, Pacific Time.  
Or
- Contact us at <https://www.awoco.com/contact-us>.



---

Website: [www.awoco.com](http://www.awoco.com)

Customer Support: 1-888-412-3428