

ROTOSHOVEL®

Operation Manual



⚠ WARNING Read before use to ensure operator safety.

Quick Start Guide

1. Charge the Battery
2. Tighten the auger into the chuck
3. Set the speed switch to "Low"
4. Insert charged battery
5. Enjoy your new Rotoshovel!

Contents

Richard Goren Enterprises LLC.....	2
Warnings.....	3
GENERAL WARNING	3
USER SAFETY.....	3
PRODUCT SAFETY	3
ELECTRICAL SAFETY	3
BATTERY SAFETY.....	4
CALIFORNIA PROPOSITION 65.....	4
Product Specifications	4
United States Warranty Information.....	4
Product Description.....	5
Assembly Instructions.....	6
Chuck not tightening?	7
Operating Instructions.....	8
Maintenance.....	8

Richard Goren Enterprises LLC.

9010 Technology Ln.
Fishers, IN 46038

(317) 360 – **ROTO** (7686)
info@rotoshovel.com

The latest instructional videos, safety information and operation manual can be found at rotoshovel.com



Warnings

GENERAL WARNING

- Read all safety warnings, instructions provided with this power tool. Failure to follow all instructions listed below may result in electric shock, fire and/or serious injury. Save all warnings and instructions for future reference. The term “power tool” in the warnings refers to the assembled Rotoshovel unit.
- Do not use the power tool if it is known to be malfunctioning in any way. A malfunctioning power tool poses unknown and elevated risks.

USER SAFETY

- This product is only for use by adults (age 18+). The Rotoshovel is not a toy.
- Keep work area clean and well lit. Do not operate power tool in the presence of explosive liquids, gases, or dust. The power tool might create sparks which could ignite debris.
- Retain distance from children and bystanders when operating the power tool.
- Be aware of your work environment and others nearby.

- Use protective equipment, including eye and hand protection while operating. Dust masks, non-skid shoes, hard hats and hearing protection used in appropriate conditions reduce personal injuries.
- Do not wear loose clothing or accessories. Avoid contact with moving components of the tool, even when powered off.
- Keep hair secured away from the auger. Hair can be caught in moving components.

PRODUCT SAFETY

- Keep tool clean during storage. Loose particles can interfere with motor and auger operation.
- Ensure proper operation of the tool before worksite use.
- Remove the battery pack before disconnecting the shovel or auger, ensuring the tool does not power on accidentally.
- Store outside the reach of minors.
- Ensure the tool grip is dry and secure to allow safe operation.
- Do not attempt to dig materials other than soil.

ELECTRICAL SAFETY

- Do not use in wet conditions. Wet conditions increase the likelihood of electric shock.

BATTERY SAFETY

- Only charge included batteries using the charger included with the Rotoshovel. Using other chargers brings the risk of fire or causing damage to the battery or charger.
- Only use included batteries. Attempting to use other batteries could result in fire or causing damage to the battery or tool.
- Store batteries away from metal materials which could make contact to the battery terminals. Shorting the terminals may cause fire.
- If abused, batteries may leak fluid. Avoid contact and do not use. If fluid is contacted, flush with water. If fluid contacts eyes, seek immediate medical attention. Do not use damaged batteries. Damaged batteries risk fire, explosion or unpredictable behavior.
- Do not expose batteries to temperatures over 265°F (130°C). Doing so may cause the battery to explode.

CALIFORNIA PROPOSITION 65

This product can expose you to chemicals including cobalt lithium nickel oxide and nickel, which are known to the State of California to cause cancer and birth defects or other reproductive harm. For more information go to www.P65Warnings.ca.gov

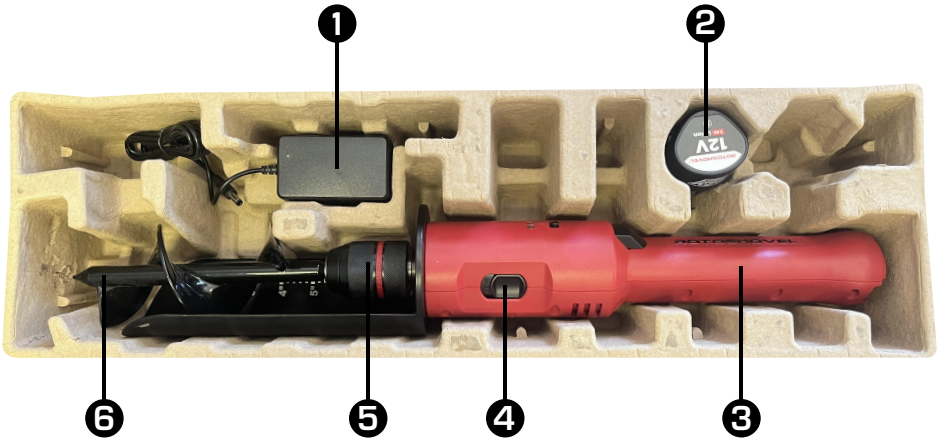
Product Specifications

Battery	12V 2AH Lithium-Ion
Auger Size	3" x 7"
Unit Length	23"
Unit Weight	4.4 lbs

United States Warranty Information

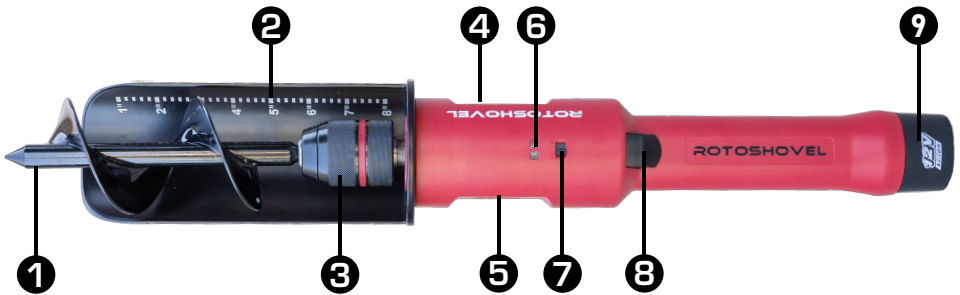
The Rotoshovel includes a 1 year warranty (from the date of purchase), applicable to the original owner. Proof of purchase must be included with returned product. Customer is responsible for mandatory prepaid freight and insurance. Warranty is not applicable for products misused, not provided with regular maintenance, disassembled, repaired, or modified by anyone other than Rotoshovel authorized personnel.

Inside the Box



1. Battery charger
2. 12 volt 2 amp hour lithium-ion battery
3. Rotoshovel handle
4. Torque Switch
5. Chuck
6. Auger

Product Description



1. Auger
2. Shovel attachment with depth gauge
3. Spindle lock chuck
4. Allen Wrench compartment
5. High and Low Speed Torque Switch
6. LED indicator for battery charge (full charge when green), auger direction and safety shutoff
7. Forward and reverse switch. Left for forward / Right for reverse
8. Power button. Press to activate
9. Battery. Squeeze tabs to release

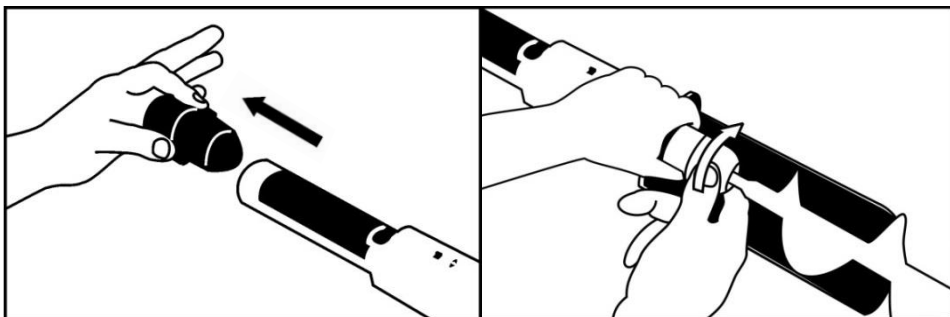
Disassembly Instructions

⚠ WARNING Remove battery before attempting to disassemble Rotoshovel

For a video guide to reassemble the Rotoshovel, please visit rotoshovel.com and click "SUPPORT" in the top right corner of the page.



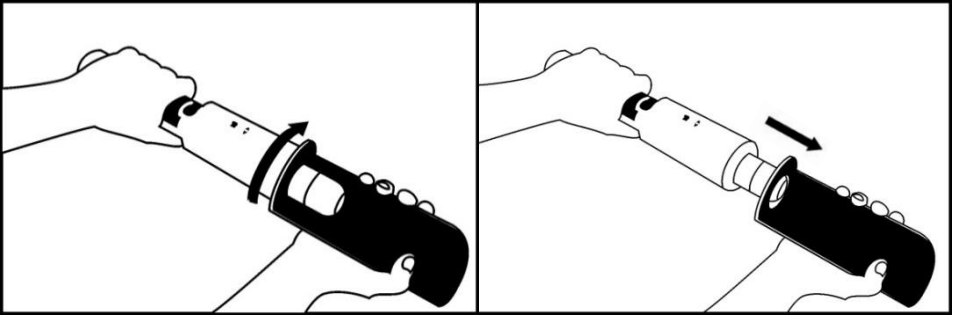
1. Remove battery from tail end of the Rotoshovel.
2. Turn chuck counter-clockwise to loosen the auger.



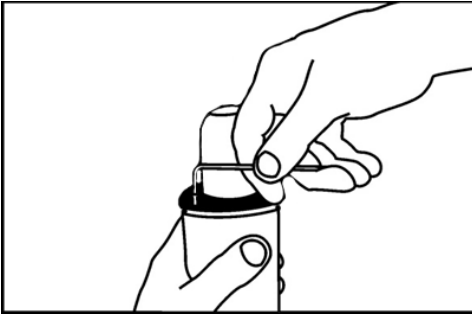
3. Remove the auger from the chuck.
4. Remove the safety screw using the included allen wrench.



5. Twist shovel attachment counter-clockwise.
6. Pull the shovel away from the base to remove.



7. Re-insert the safety screw for safe keeping.
8. Store in a dry environment to prevent water damage.



Chuck not tightening?

Debris or manufacturing materials can become lodged between the chuck and one of the three jaws inside. These steps can loosen a motionless chuck. If these do not resolve the issue, call (317) 360 – 7686 for live support.

- 1) Rotate the chuck with as much force as you are comfortably able. Don't fear damaging the chuck by attempting to loosen it!
- 2) Spray dry lube or other shop lubricant into the end of the chuck. While holding the bottom of the chuck still, twist the top back and forth. Make sure to wear eye protection while spraying lube.

Operating Instructions

⚠ WARNING Keep clothing and accessories, hands, and others away from the auger while the battery is installed. Secure hair away from the auger.

Ensure the absence of buried utilities prior to digging!

1. Ensure a stable footing before operating to provide adequate control while digging. Put the Rotoshovel in forward mode.

⚠ WARNING Do not step on the Rotoshovel!

2. The Rotoshovel is designed to dig dirt efficiently. Do not attempt to dig other materials.
 3. If the Rotoshovel hits an obstacle, the motor will automatically stop. Release the power switch and ensure the obstacle is removed before continuing to dig.
-

Maintenance

1. The Rotoshovel battery takes 1.5 hours to recharge. The red LED on the charger indicates the battery is charging. The green LED indicates the battery has finished charging.
2. Ensure individual Rotoshovel components are clean before and after use.
3. For cleaning, remove battery and use damp rag to remove debris.

⚠ WARNING Do not saturate in water