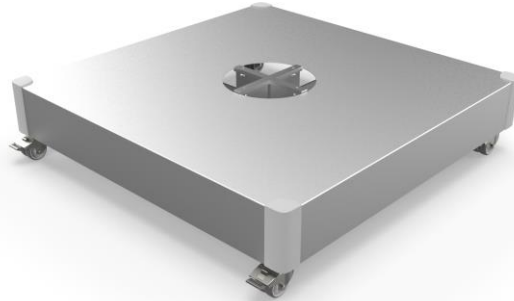


Tile references for Umbrosa bases



UMBROSA

Standard Alu Tile Base



SKU: USA_TILEBASEALU

REMARK: ALL ORDERS ARE SHIPPED WITH THIS BASE MODEL

UMBROSA

Bottom layers: available at Home Depot

Install 2 bottom layers



Layer 1

Required quantity: 8

2 pavers to be placed at the bottom of each base segment



Layer 2

UMBROSA

Top layer: available at Home Depot

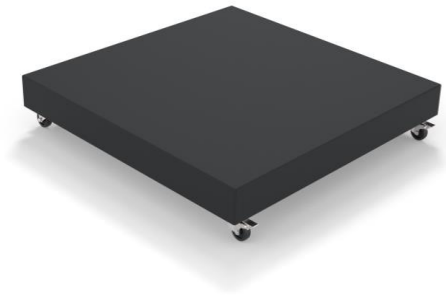
Install 1 top layers



Required quantity: 16

4 pavers to be placed in each base segment, on top of the bottom layers

Nano UX Base



SKU:
TILEBASE-M-ARCHI
TILEBASE-M-BLACK

ALL ORDERS ARE SHIPPED WITH THIS BASE MODEL

UMBROSA

Tile solution available at Home Depot

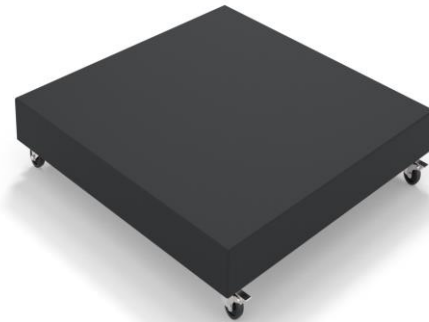


Install 2 layers in each base segment

Required quantity: 8

UX Bases Full Black and Archi

(Versa UX, Versa PX)



SKU:

USA_UXVERSABASEARCHI

USA_UXVERSABASEBLACK

UMBROSA

Bottom layers: available at Home Depot



Install 2 layers in each base segment

Required quantity: 8

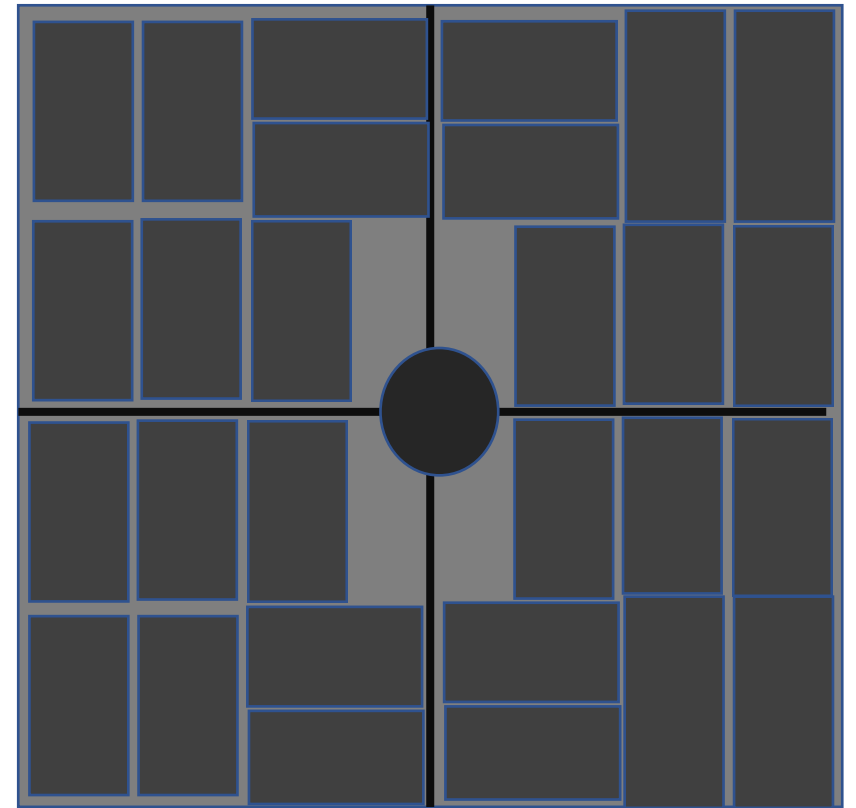
2 pavers to be placed at the bottom of each base segment

Top layer: available at Home Depot



Required quantity: 28

Place 7 pavers in each base segment.



UX Bases Sand

(Versa UX, Versa PX, Icarus UX)



SKU:

TILEBASEUX-L-SAND ALL ORDERS ARE SHIPPED WITH THIS BASE MODEL

UMBROSA

Tile solution available at Home Depot



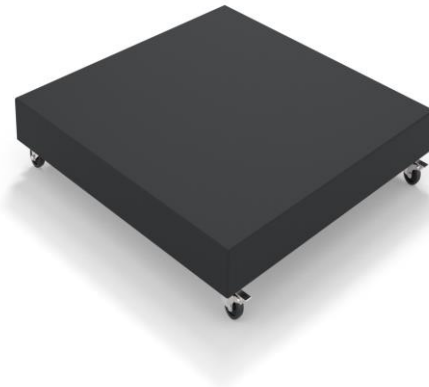
Install 3 layers in each base segment

Required quantity: 12

Top layer (4 tiles) requires cut-off of corners- see manual.

ECLIPSUM UX

UX Bases Full Black and Archi



SKU:
TILEBASEUX-L-ARCHI
TILEBASEUX-L-BLACK

UMBROSA

Tile solution available at Home Depot



Install 3 layers in each base segment

Required quantity: 12

Top layer (4 tiles) requires cut-off of corners- see manual.