



Setting up the Shadowspec Protection Cover

Shadowspec Serenity™ & Unity™

1. Remove your Protection Cover and the supplied Rod from the packaging.



PROTECTION COVER ROD



FOLDED PROTECTION COVER

2. Assemble your Protection Cover Rod to full length.



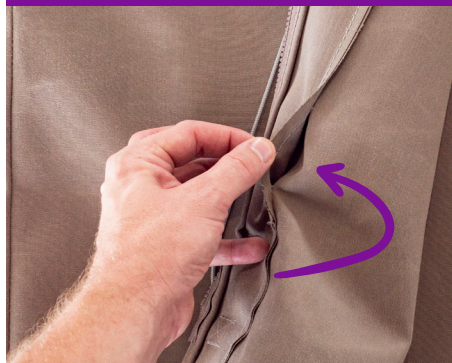
3. Unfold and unzip your Protection Cover.

4. Locate the opening to the Rod Channel on the inside left flap of the Protection Cover.

Inside the Left Flap



Locate the Rod Channel



The Outside Seam



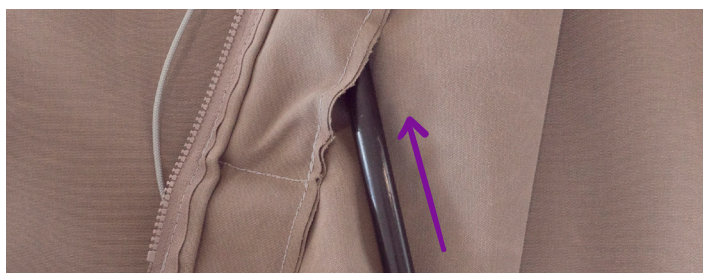
NOTE:

The channel opening can be hard to find. It is quite small.

TIP:

You can see the stitching on the outside has a gap; this is an indicator of the location of the channel entry point.

5. With care, slide the Rod into the channel. It goes all the way to the top of the Protection Cover.



The bottom of the rod will fit into the base of the channel, concealing it.

6. Your Protection Cover is now ready to use.



PTO for the Operation Guide



Setting up the Shadowspec Protection Cover

Shadowspec Serenity™ & Unity™

1. Close your umbrella as per the instruction manual.



2. Straighten and fold the Canopy to compress its size before using the supplied Canopy Strap to secure the Frame and Canopy.

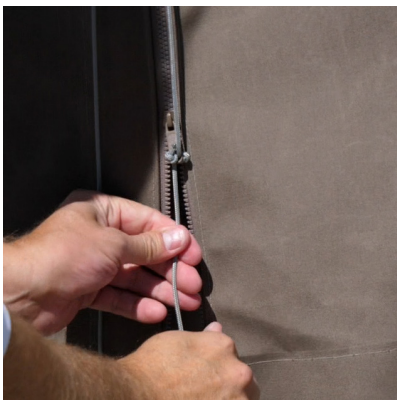


This ensures your umbrella fits inside the Protection Cover

3. Using the rodded side of the Cover, manoeuvre the Cover over the top of your closed umbrella.



4. With care, pull the zip all-the-way down using the cord.



5. Click the dome clasp at the base to secure the Protection Cover.



6. Reverse this process to remove the Protection Cover.

PTO for the Assembly Guide