

## Mounting instructions gabion basket and seat plate for type SCHATTELLO, SZ411, SZ412, SZ420, SZ201 and SZ203

The following instructions include all information necessary for the assembly and operation of this gabion basket. To avoid any misunderstanding we advise you to read these instructions carefully and then keep them for later reference.



Caution

**Non- observation of mounting instructions can result in personal injuries or damage to property.**

Please note that if these instructions are not observed, the manufacturer cannot assume any liability or guarantee.

- Always follow the safety regulations.
- Should you not understand any part of these mounting instructions, please contact your MAY dealer.

### Scope of delivery



**Gabion basket**

steel, hot dip galvanized  
art. no. 357885



**Seat plate**

HPL material, grey decor,  
4 screws included  
art. no. 357890

## Assembly

1. Before assembly, the parasol must be erected, opened and aligned. You will find the detailed instructions in the manual „SCHATTELLO suitable for installation options without placement hinge“. If you do not follow this order, it will become extremely difficult to fix the centre pole with the two M10 cylinder screws.



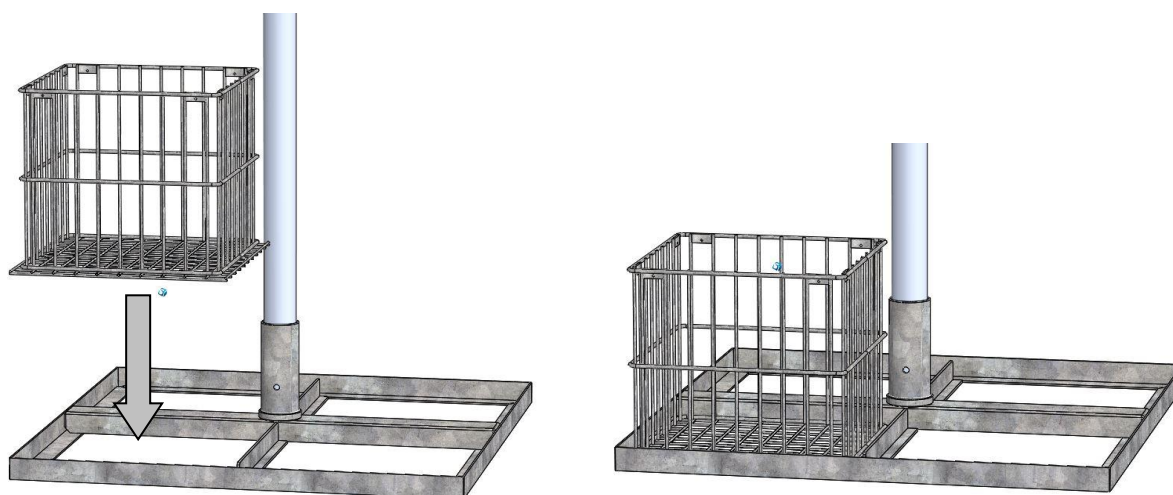
**Danger**

**If the parasol is not fully anchored, it can cause serious or even fatal injury.**

If the M10 screws work loose, the wind can lift the parasol.

- Use only the original M10 socket head screws and tighten them with a torque of 20 Nm.
- Secure the M10 socket head screws with the locknuts

2. Put the gabion basket into the pedestal.



3. Get the stones you would like to use. The grain size must not be less than 60/90mm or at least larger than the wire mesh size 50 mm. In case of a grain size of 60/90 mm the filling reaches a load of approximately 110 kg. If required, please follow the table below:

Size of parasol SCHATTELLO	Total weight all gabion baskets including stones
round:            Ø 3m - Ø 5m, 2.5x3.5m square:           3x3m - 4.5x4.5m rectangular:   all excluding 4x6m triangular:      4x4x4m, 6x6x6m	min. 124 kg, optimally min. 2 filled gabion baskets
Ø 6m - Ø 7m, 4x6m, 5x5m	min. 248 kg, optimally min. 4 filled gabion baskets

4. Fill the gabion baskets with the stones.



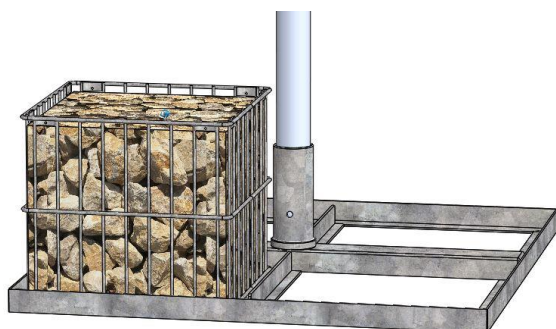
Danger

---

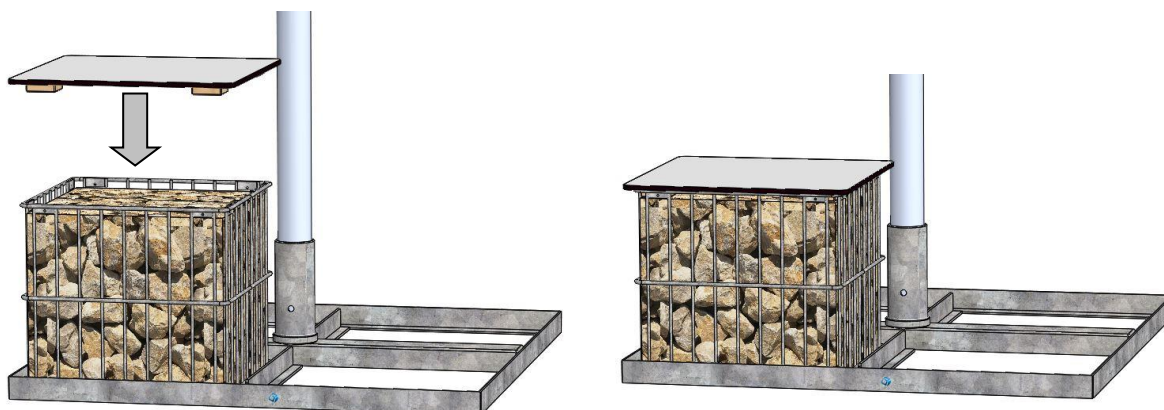
**A falling parasol can cause serious or even fatal injury.**

If the pedestal is not equipped with sufficient weight according to the size of the parasol, the parasol may fall and cause injuries.

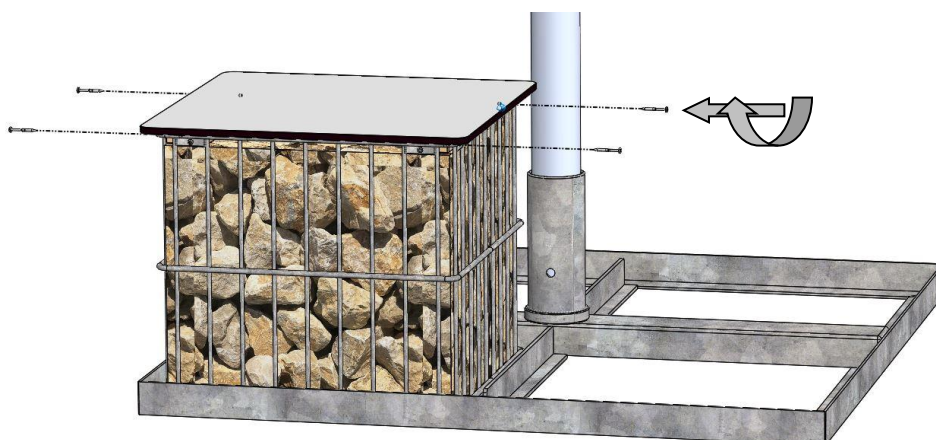
- Observe the information given in the above chart.
  - In windy locations the number of slabs must be increased.
- 



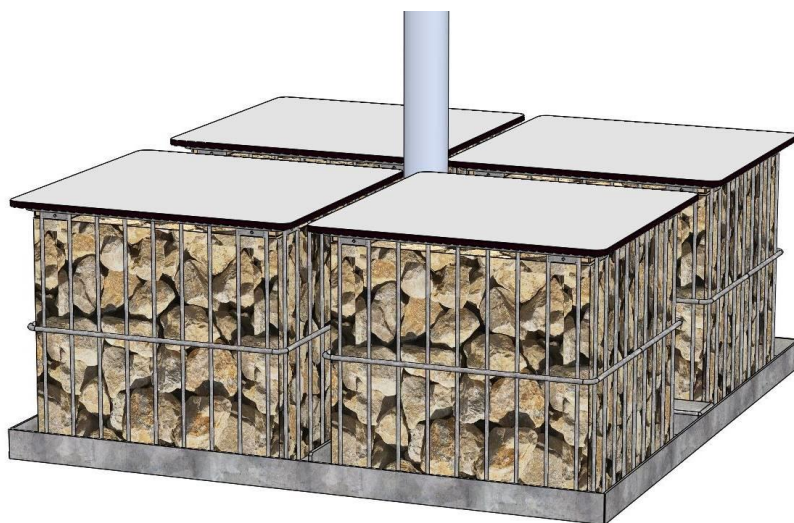
5. Put the seat plate into the gabion basket. Use the purchased MAY HPL seat plate (article no. 357890), or design your individual seat. Therefore, you will find sketches in the following chapter "DIY seating".



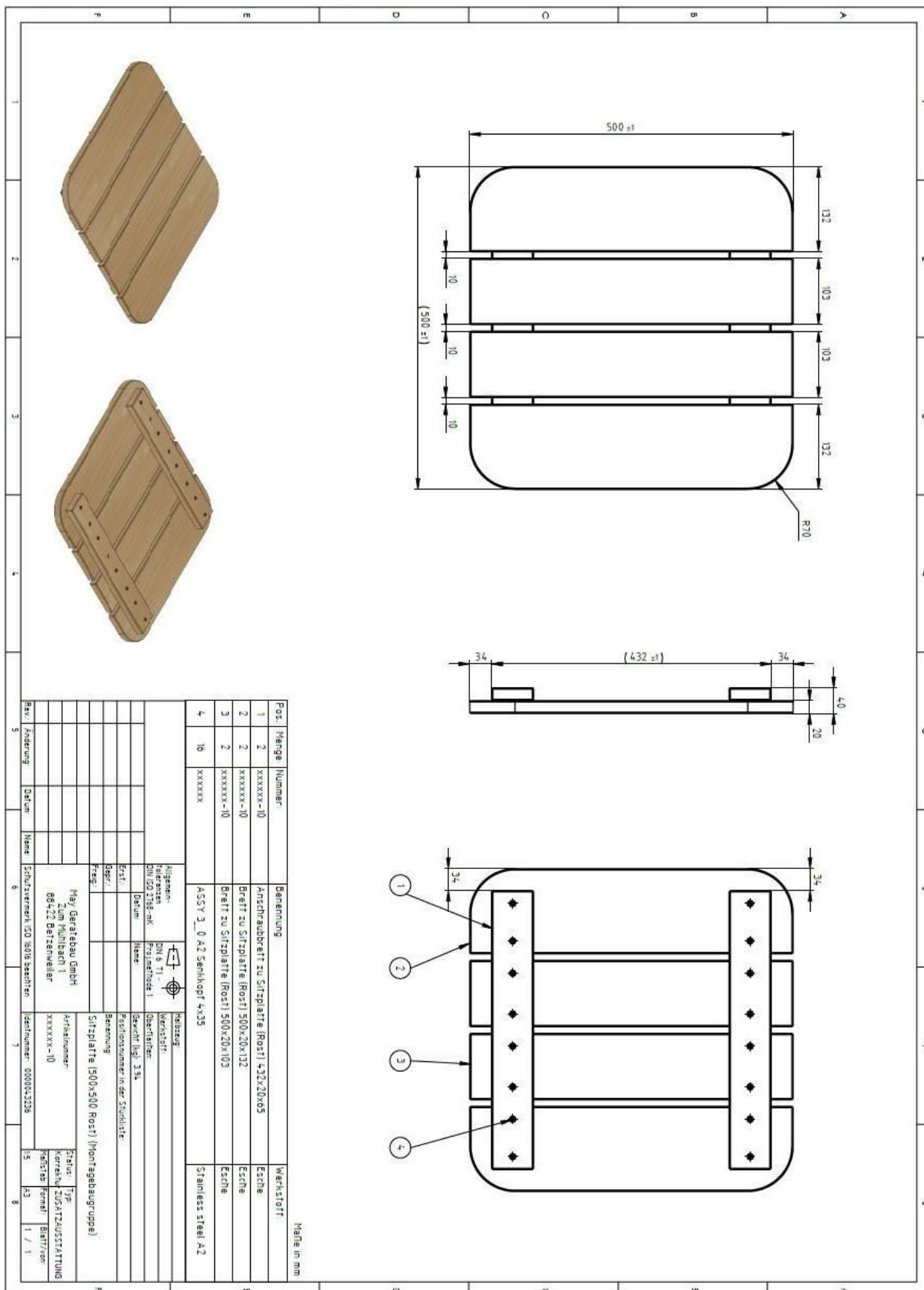
6. Use a torx 20 to fix the seat plate with the 4 screws delivered. There is one screw for each corner.



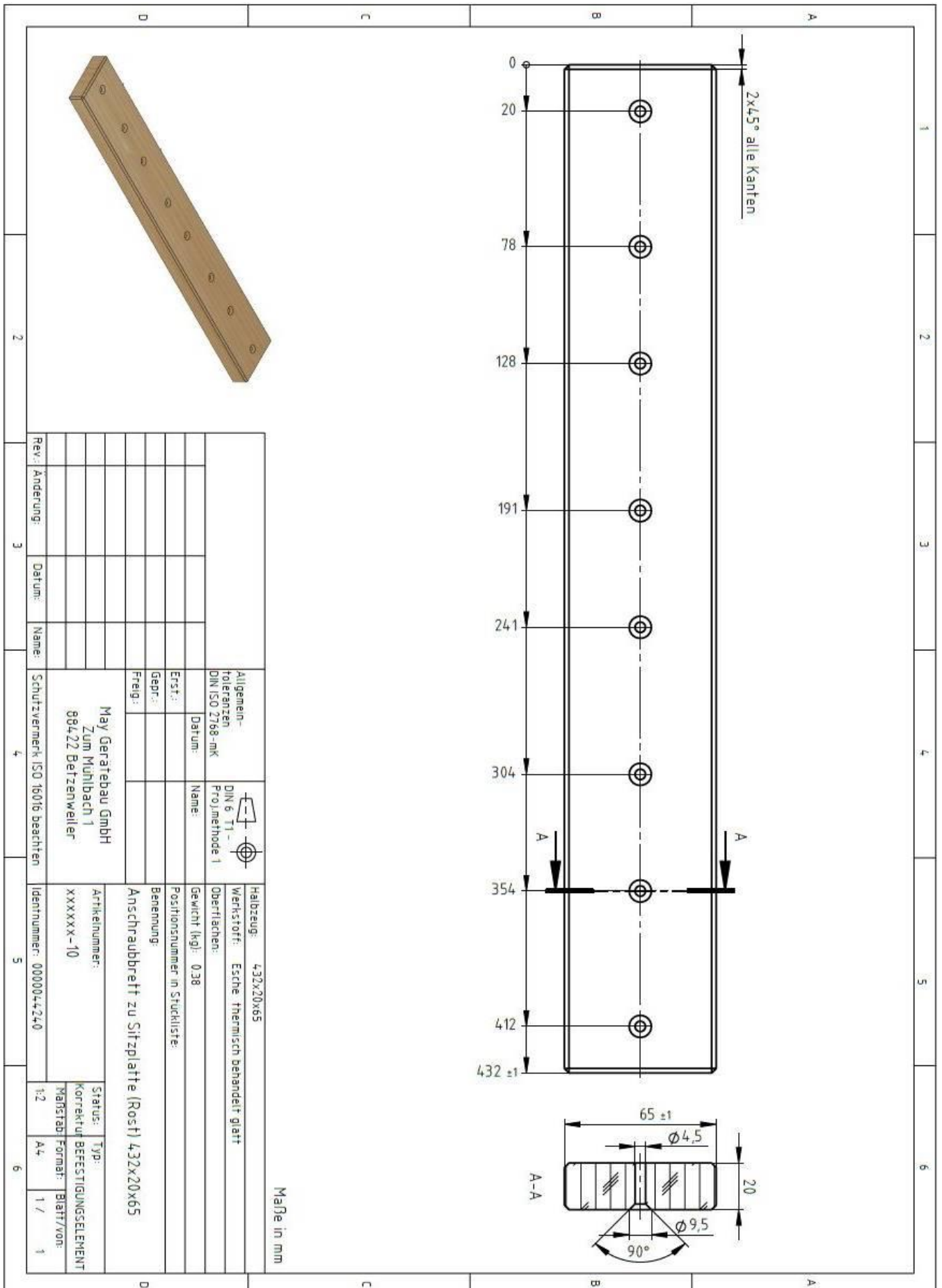
7. Repeat these steps for all gabion baskets.

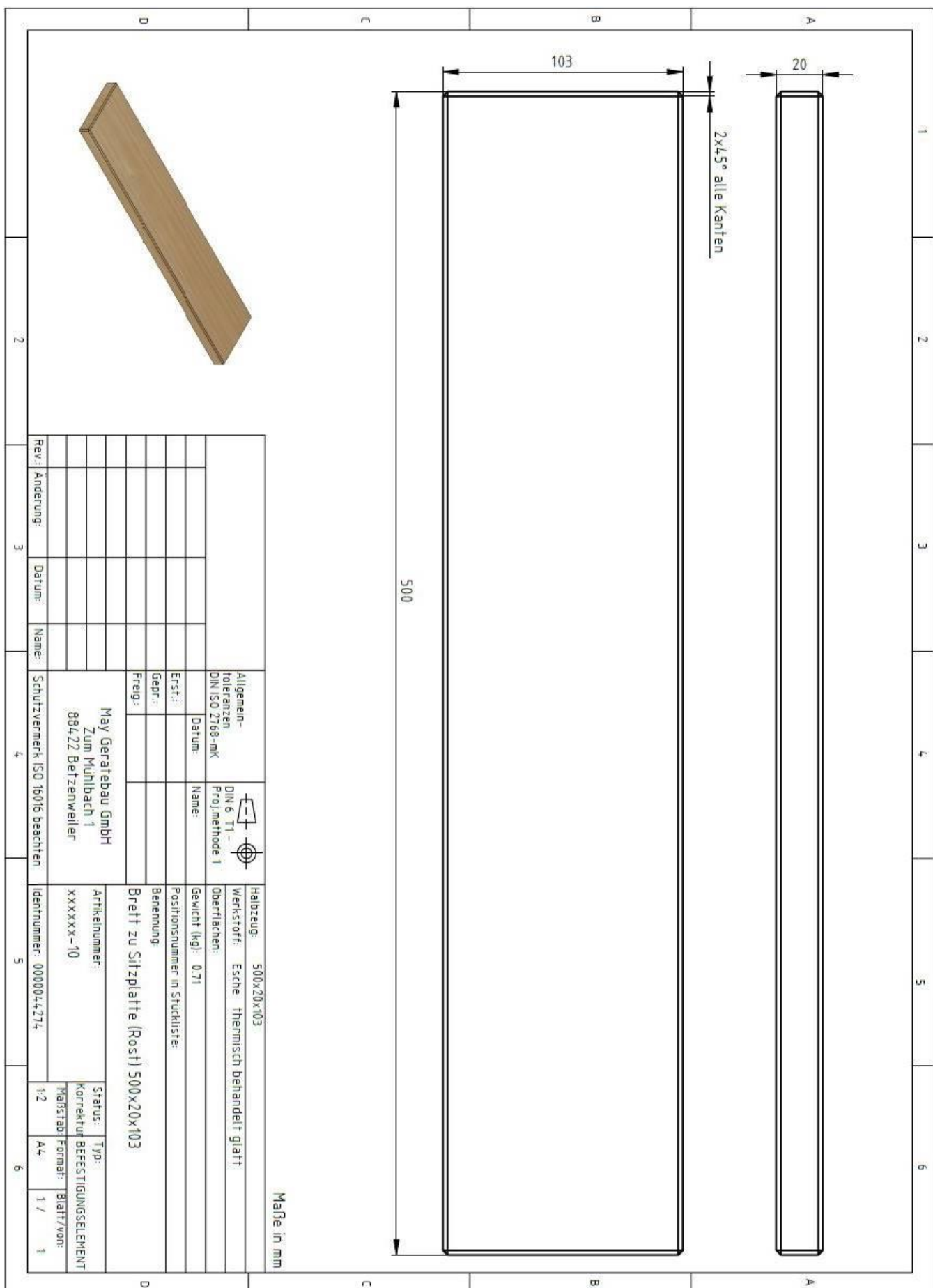


# Do-It-Yourself seating

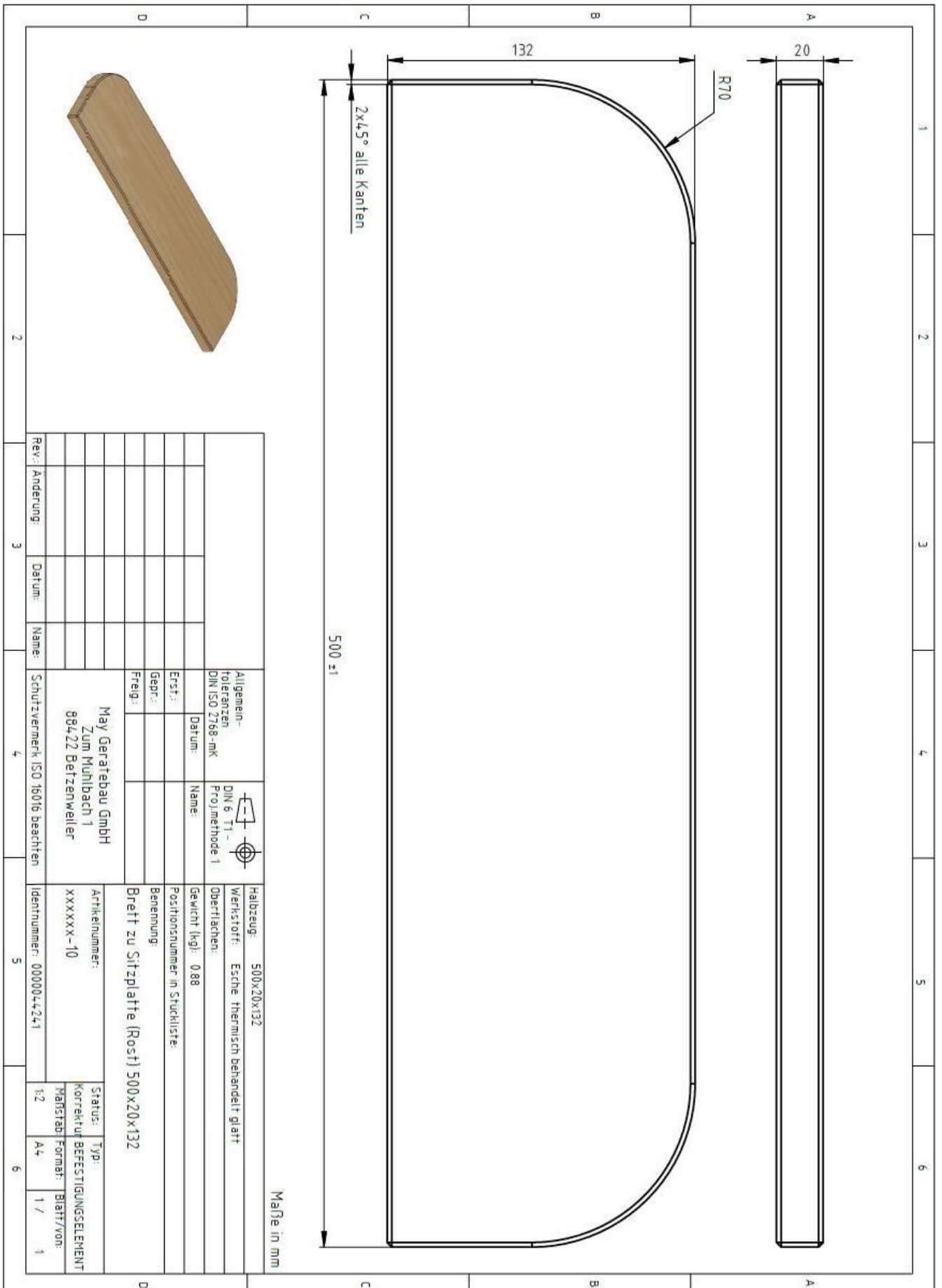








Allgemein- toleranzen DIN ISO 2768-mK		DIN 6 T1 - Projemethode 1		Halbzeug: 500x20x103	
Datum:		Name:		Werkstoff: Esche thermisch behandelt glatt	
Erst:		Name:		Oberflächen:	
Gepr.:		Name:		Gewicht (kg): 0,71	
Freige:		Name:		Positionsnummer in Stückliste:	
Benennung:		Name:		Benennung:	
May Gerätebau GmbH Zum Mühlbach 1 88422 Betzenweiler		Schutzvermerk ISO 16016 beachten		Breit zu Sitzplatte (Rost) 500x20x103	
Artikelnummer: xxxxxx-10		Identnummer: 000004274		Status: Typ: korrektur BEFESTIGUNGSELEMENT	
Maßstab: 1/2		Format: A4		Blatt/von: 1 / 1	



Allgemein- Toleranzen DIN ISO 2768-mK		DIN 6 T1 - Proj. methode 1		Halbzeug: 500x20x132	
Datum:		Name:		Werkstoff: Esche thermisch behandelt glatt	
Erst-:		Datum:		Oberflächen:	
Gepr.:		Name:		Gewicht (kg): 088	
Freig.:		Datum:		Positionsnummer in Stückliste:	
Benennung: Breit zu Sitzplatte (Rost) 500x20x132				Status: Typ: Korrektur BEFESTIGUNGSELEMENT	
May Gerätebau GmbH Zum Mühlbach 1 89422 Betzenweiler				Maßstab: Format: Blatt/von: 1:2 A4 1 / 1	
Rev. Änderung:	Datum:	Name:	Schutzvermerk: ISO 16016 beachten	Identnummer: 0000044241	