

MODENO

THE ART OF FIRE

OCEAN ROCK USA INC.
505 E Rincon St., Ste 100 Corona, CA 92879
www.elementifire.com
E-mail: info@oceanrockusa.com
Tel.: +1 951-220-7227

OCEAN ROCK EU GmbH
Karl-Benz-Straße 9, 40764 Langenfeld, Germany
www.elementieu.com
E-mail: info@oceanrockeu.com
Tel.: +49 2173-2979 981

ELEMENTI INDUSTRIAL (XIAMEN) CO., LTD.
OCEAN ROCK GLOBAL TRADING (XIAMEN) CO., LTD.
901, 1739 Lvling Rd., Xiamen, China (361008)
www.oceanrockcn.com
E-mail: info@oceanrockcn.com
Tel.: +86 592-6368809

2024

MODENO

FIRE

■ GAS FIRE PIT

■ ETHANOL TABLETOP FIREPLACE

MODENO expresses the fashion diversity of modern cities with simple yet unique design styles.

In the outdoor living area, MODENO FIRE will provide a modern and comfortable atmosphere for you and your family and friends to enjoy a relaxed and joyful time in the wonderland.



AURORA

FIRE TABLE
OFG114



Product Description:

- Body construction: Glass-fiber reinforced concrete
- Burner ring size: 12 in / 30.5 cm diameter
- Burner ring construction: 18 gauge, 304 stainless steel
- Burner pan size: 20.3 × 20.3 × 2 in
51.5 × 51.5 × 5 cm
- Burner pan construction: 18 gauge, 304 stainless steel
- Control system: Push button spark ignition system
- Natural gas item number: OFG114-NG
- Propane item number: OFG114-LP
- Maximum heat output: 50,000 BTUs for CSA
14.6 KW (50,000 BTUs) for CE & UKCA
- Certification: CSA & CE & UKCA Certified
- Media: 13.2 lbs / 6 kgs lava rock (included)
- Warranty: 1 year
- PVC cover included
- Accessories available (sold separately):
 1. Wind screen
 2. Tank cover

Specification	Product		Package	
	inch	cm	inch	cm
Length	34.3	87	38.6	98
Width	34.3	87	38.6	98
Height	14.2	36	18.1	46
Weight	108 lbs	49 kgs	147 lbs	67 kgs





WESTPORT

FIRE TABLE OFG135



Product Description:

- Body construction: Glass-fiber reinforced concrete
- Burner ring size: 12 in / 30.5 cm diameter
- Burner ring construction: 18 gauge, 304 stainless steel
- Burner pan size: 20.3 × 20.3 × 2 in
51.5 × 51.5 × 5 cm
- Burner pan construction: 18 gauge, 304 stainless steel
- Control system: Push button spark ignition system
- Natural gas item number: OFG135-NG
- Propane item number: OFG135-LP
- Maximum heat output: 50,000 BTUs for CSA
14.6 KW (50,000 BTUs) for CE & UKCA
- Certification: CSA & CE & UKCA Certified
- Media: 13.2 lbs / 6 kgs lava rock (included)
- Warranty: 1 year
- PVC cover included
- Accessories available (sold separately):
 1. Wind screen
 2. Tank cover

Specification	Product		Package	
	inch	cm	inch	cm
Length	34.3	87	38.6	98
Width	34.3	87	38.6	98
Height	14.2	36	18.1	46
Weight	108 lbs	49 kgs	147 lbs	67 kgs

ROCA

FIRE TABLE

OFG107



Product Description:

- Body construction: Glass-fiber reinforced concrete
- Burner ring size: 12 in / 30.5 cm diameter
- Burner ring construction: 18 gauge, 304 stainless steel
- Burner pan size: Dia. 17.8 × 0.04 in
Dia. 45.1 × 0.1 cm
- Burner pan construction: 18 gauge, 304 stainless steel
- Control system: Push button spark ignition system
- Natural gas item number: OFG107-NG
- Propane item number: OFG107-LP
- Maximum heat output: 50,000 BTUs for CSA
14.6 KW (50,000 BTUs) for CE & UKCA
- Certification: CSA & CE & UKCA Certified
- Media: 13.2 lbs / 6 kgs lava rock (included)
- Warranty: 1 year
- PVC cover included
- Accessories available (sold separately):
 1. Wind screen
 2. Tank cover

Specification	Product		Package	
	inch	cm	inch	cm
Length	34.3	87	38.6	98
Width	34.3	87	38.6	98
Height	14.6	37	18.5	47
Weight	97 lbs	44 kgs	117 lbs	53 kgs



VENICE

FIRE TABLE
OFG113



Product Description:

- Body construction: Glass-fiber reinforced concrete
- Burner ring size: 12 in / 30.5 cm diameter
- Burner ring construction: 18 gauge, 304 stainless steel
- Burner pan size: Dia. 17.8 × 0.04 in
Dia. 45.1 × 0.1 cm
- Burner pan construction: 18 gauge, 304 stainless steel
- Control system: Push button spark ignition system
- Natural gas item number: OFG113-NG
- Propane item number: OFG113-LP
- Maximum heat output: 50,000 BTUs for CSA
14.6 KW (50,000 BTUs) for CE & UKCA
- Certification: CSA & CE & UKCA Certified
- Media: 13.2 lbs / 6 kgs lava rock (included)
- Warranty: 1 year
- PVC cover included
- Accessories available (sold separately):
 1. Wind screen
 2. Tank cover

Specification	Product		Package	
	inch	cm	inch	cm
Length	34.3	87	38.6	97.5
Width	34.3	87	38.6	97.5
Height	14.6	37	18.9	48
Weight	105lbs	48 kgs	127 lbs	58 kgs

TRAMORE

FIRE TABLE
OFG132



Product Description:

- Body construction: Glass-fiber reinforced concrete
- Burner ring size: 12 in / 30.5 cm diameter
- Burner ring construction: 18 gauge, 304 stainless steel
- Burner pan size: Dia. 17.8 × 0.04 in
Dia. 45.1 × 0.1 cm
- Burner pan construction: 18 gauge, 304 stainless steel
- Control system: Push button spark ignition system
- Natural gas item number: OFG132-NG
- Propane item number: OFG132-LP
- Maximum heat output: 50,000 BTUs for CSA
14.6 KW (50,000 BTUs) for CE & UKCA
- Certification: CSA & CE & UKCA Certified
- Media: 13.2 lbs / 6 kgs lava rock (included)
- Warranty: 1 year
- PVC cover included
- Accessories available (sold separately):
 1. Wind screen
 2. Tank cover

Specification	Product		Package	
	inch	cm	inch	cm
Length	34.3	87	38.6	97.5
Width	34.3	87	38.6	97.5
Height	14.6	37	18.9	48
Weight	105lbs	48 kgs	127 lbs	58 kgs

NANTUCKET

FIRE BOWL
OFG116



Product Description:

- Body construction: Glass-fiber reinforced concrete
- Burner ring size: 9.8 in / 25 cm diameter
- Burner ring construction: 18 gauge, 304 stainless steel
- Burner pan size: Dia. 17.8 × 0.04 in
Dia. 45.1 × 0.1 cm
- Burner pan construction: 18 gauge, 304 stainless steel
- Control system: Push button spark ignition system
- Natural gas item number: OFG116-NG
- Propane item number: OFG116-LP
- Maximum heat output: 40,000 BTUs for CSA
11.72 KW (40,000 BTUs) for CE & UKCA
- Certification: CSA & CE & UKCA Certified
- Media: 13.2 lbs / 6 kgs lava rock (included)
- Warranty: 1 year
- PVC cover included
- Tank cover available (sold separately)

Specification	Product		Package	
	inch	cm	inch	cm
Length	26.6	67.5	30.3	77
Width	26.6	67.5	30.3	77
Height	13.8	35	17.1	43.5
Weight	74 lbs	34 kgs	85 lbs	39 kgs

JEFFERSON

FIRE BOWL
OFG119



Product Description:

- Body construction: Glass-fiber reinforced concrete
- Burner ring size: 9.8 in / 25 cm diameter
- Burner ring construction: 18 gauge, 304 stainless steel
- Burner pan size: Dia. 17.8 × 0.04 in
Dia. 45.1 × 0.1 cm
- Burner pan construction: 18 gauge, 304 stainless steel
- Control system: Push button spark ignition system
- Natural gas item number: OFG119-NG
- Propane item number: OFG119-LP
- Maximum heat output: 40,000 BTUs for CSA
11.72 KW (40,000 BTUs) for CE & UKCA
- Certification: CSA & CE & UKCA Certified
- Media: 13.2 lbs / 6 kgs lava rock (included)
- Warranty: 1 year
- PVC cover included
- Tank cover available (sold separately)

Specification	Product		Package	
	inch	cm	inch	cm
Length	26.6	67.5	30.3	77
Width	26.6	67.5	30.3	77
Height	13.8	35	17.1	43.5
Weight	74 lbs	34 kgs	85 lbs	39 kgs



YORK

FIRE BOWL
OFG115



Product Description:

- Body construction: Glass-fiber reinforced concrete
- Burner ring size: 9.8 in / 25 cm diameter
- Burner ring construction: 18 gauge, 304 stainless steel
- Burner pan size: Dia. 17.8 × 0.04 in
Dia. 45.1 × 0.1 cm
- Burner pan construction: 18 gauge, 304 stainless steel
- Control system: Push button spark ignition system
- Natural gas item number: OFG115-NG
- Propane item number: OFG115-LP
- Maximum heat output: 40,000 BTUs for CSA
11.72 KW (40,000 BTUs) for CE & UKCA
- Certification: CSA & CE & UKCA Certified
- Media: 13.2 lbs / 6 kgs lava rock (included)
- Warranty: 1 year
- PVC cover included
- Tank cover available (sold separately)

Specification	Product		Package	
	inch	cm	inch	cm
Length	26.6	68	30.3	77
Width	26.6	68	30.3	77
Height	14.2	36	17.9	45.5
Weight	78 lbs	36 kgs	90 lbs	41 kgs

NEWBRIDGE

FIRE BOWL
OFG138



Product Description:

- Body construction: Glass-fiber reinforced concrete
- Burner ring size: 9.8 in / 25 cm diameter
- Burner ring construction: 18 gauge, 304 stainless steel
- Burner pan size: Dia. 17.8 × 0.04 in
Dia. 45.1 × 0.1cm
- Burner pan construction: 18 gauge, 304 stainless steel
- Control system: Push button spark ignition system
- Natural gas item number: OFG138-NG
- Propane item number: OFG138-LP
- Maximum heat output: 40,000 BTUs for CSA
11.72 KW (40,000 BTUs) for CE & UKCA
- Certification: CSA & CE & UKCA Certified
- Media: 13.2 lbs / 6 kgs lava rock (included)
- Warranty: 1 year
- PVC cover included
- Tank cover available (sold separately)

Specification	Product		Package	
	inch	cm	inch	cm
Length	26.6	68	30.3	77
Width	26.6	68	30.3	77
Height	14.2	36	17.9	45.5
Weight	78 lbs	36 kgs	90 lbs	41 kgs

RIDGEFIELD

FIRE PIT
OFG150



Product Description:

- Body construction: Glass-fiber reinforced concrete
- Burner ring size: 9.8 in / 25 cm diameter
- Burner ring construction: 18 gauge, 304 stainless steel
- Burner pan size: Dia. 12.2 × 12.2 × 0.2 in
Dia. 31 × 31 × 0.5 cm
- Burner pan construction: 18 gauge, 304 stainless steel
- Control system: Push button spark ignition system
- Natural gas item number: OFG150-NG
- Propane item number: OFG150-LP
- Maximum heat output: 40,000 BTUs for CSA
11.72 KW (40,000 BTUs) for CE & UKCA
- Certification: CSA & CE & UKCA Certified
- Media: 13.2 lbs / 6 kgs lava rock (included)
- Warranty: 1 year
- PVC cover included
- Accessories available (sold separately):
 1. Wind screen
 2. Tank cover

Specification	Product		Package	
	inch	cm	inch	cm
Length	26.8	68	31.7	80.5
Width	26.8	68	31.7	80.5
Height	14.2	36	19.3	49
Weight	89 lbs	41 kgs	110 lbs	50 kgs

WATERFORD

FIRE TABLE
OFG152



Product Description:

- Body construction: Glass-fiber reinforced concrete
- Burner ring size: 9.8 in / 25 cm diameter
- Burner ring construction: 18 gauge, 304 stainless steel
- Burner pan size: Dia. 12.2 × 0.04 in
Dia. 31 × 0.1 cm
- Burner pan construction: 18 gauge, 304 stainless steel
- Control system: Push button spark ignition system
- Natural gas item number: OFG152-NG
- Propane item number: OFG152-LP
- Maximum heat output: 40,000 BTUs for CSA
11.72 KW (40,000 BTUs) for CE & UKCA
- Certification: CSA & CE & UKCA Certified
- Media: 13.2 lbs / 6 kgs lava rock (included)
- Warranty: 1 year
- PVC cover included
- Accessories available (sold separately):
 1. Wind screen
 2. Tank cover

Specification	Product		Package	
	inch	cm	inch	cm
Length	26.8	68	30.3	77
Width	26.8	68	30.3	77
Height	14.2	36	17.9	45.5
Weight	78 lbs	36 kgs	91 lbs	41 kgs

BRANFORD

FIRE TABLE OFG141



Product Description:

- Body construction: Glass-fiber reinforced concrete
- Burner ring size: 12 in / 30.5 cm diameter
- Burner ring construction: 18 gauge, 304 stainless steel
- Burner pan size: Dia. 17.8 × 0.04 in
Dia. 45.1 × 0.1 cm
- Burner pan construction: 18 gauge, 304 stainless steel
- Control system: Push button spark ignition system
- Natural gas item number: OFG141-NG
- Propane item number: OFG141-LP
- Maximum heat output: 50,000 BTUs for CSA
14.6 KW (50,000 BTUs) for CE & UKCA
- Certification: CSA & CE & UKCA Certified
- Media: 13.2 lbs / 6 kgs lava rock (included)
- Warranty: 1 year
- PVC cover included
- Accessories available (sold separately):
 1. Wind screen
 2. Tank cover

Available colors:



Light Gray
OFG141LG

Black
OFG141BK

Specification	Product		Package	
	inch	cm	inch	cm
Length	34.3	87	37.2	94.5
Width	34.3	87	37.2	94.5
Height	16.9	43	19.7	50
Weight	127 lbs	58 kgs	149 lbs	68 kgs



BASALT COLUMN FIRE PIT OFG601



Specification	Product		Package	
	inch	cm	inch	cm
Length	19.7	50	22.8	58
Width	19.9	48	25.2	68
Height	27.6	70	32.3	82
Weight	82 lbs	37 kgs	94 lbs	43 kgs

Product Description:

- Body construction: Glass-fiber reinforced concrete
- Burner ring size: 9.8 in / 25 cm diameter
- Burner ring construction: 18 gauge, 304 stainless steel
- Burner pan size: Dia. 12.2 × 0.04 in
Dia. 31 × 0.1 cm
- Burner pan construction: 18 gauge, 304 stainless steel
- Control system: Push button spark ignition system
- Gas type: Propane
Item number: OFG601-LP
- Maximum heat output: 40,000 BTUs for CSA
11.72 KW (40,000 BTUs) for CE & UKCA
- Conceals standard 20 lbs / 5 kgs propane tank (not included)
- Certification: CSA & CE & UKCA Certified
- Media: 6.6 lbs / 3 kgs lava rock (included)
- Warranty: 1 year
- PVC cover included

LAVA TUBE FIRE PIT OFG602



Specification	Product		Package	
	inch	cm	inch	cm
Length	17.7	45	21.7	55
Width	17.7	45	21.7	55
Height	27.8	70	31.7	80.5
Weight	75 lbs	34 kgs	86 lbs	39 kgs

Product Description:

- Body construction: Glass-fiber reinforced concrete
- Burner ring size: 9.8 in / 25 cm diameter
- Burner ring construction: 18 gauge, 304 stainless steel
- Burner pan size: Dia. 12.2 × 0.04 in
Dia. 31 × 0.1 cm
- Burner pan construction: 18 gauge, 304 stainless steel
- Control system: Push button spark ignition system
- Gas type: Propane
Item number: OFG602-LP
- Maximum heat output: 40,000 BTUs for CSA
11.72 KW (40,000 BTUs) for CE & UKCA
- Conceals standard 20 lbs / 5 kgs propane tank (not included)
- Certification: CSA & CE & UKCA Certified
- Media: 6.6 lbs / 3 kgs lava rock (included)
- Warranty: 1 year
- PVC cover included

POMPEII

FIRE PIT
OFG609



Specification	Product		Package	
	inch	cm	inch	cm
Length	23.2	59	26.6	67.5
Width	23.2	59	26.6	67.5
Height	26	66	29.5	75
Weight	75 lbs	34 kgs	89 lbs	41 kgs

Product Description:

- Body construction: Glass-fiber reinforced concrete
- Burner ring size: 9.8 in / 25 cm diameter
- Burner ring construction: 18 gauge, 304 stainless steel
- Burner pan size: Dia. 12.2 × 0.04 in
Dia. 31 × 0.1 cm
- Burner pan construction: 18 gauge, 304 stainless steel
- Control system: Push button spark ignition system
- Gas type: Propane
Item number: OFG609-LP
- Maximum heat output: 40,000 BTUs for CSA
11.72 KW (40,000 BTUs) for CE & UKCA
- Conceals standard 20 lbs / 5 kgs propane tank (not included)
- Certification: CSA & CE & UKCA Certified
- Media: 6.6 lbs / 3 kgs lava rock (included)
- Warranty: 1 year
- PVC cover included

EXETER

FIRE PIT
OFG612

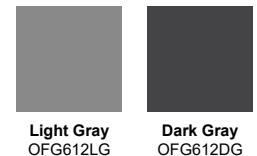


Specification	Product		Package	
	inch	cm	inch	cm
Length	20.9	53	25.6	65
Width	20.9	53	25.6	65
Height	38.2	97	42.9	109
Weight	119 lbs	54 kgs	133 lbs	60 kgs

Product Description:

- Body construction: Glass-fiber reinforced concrete
- Burner ring size: 9.8 in / 25 cm diameter
- Burner ring construction: 18 gauge, 304 stainless steel
- Burner pan size: Dia. 12.2 × 0.04 in
Dia. 31 × 0.1 cm
- Burner pan construction: 18 gauge, 304 stainless steel
- Control system: Push button spark ignition system
- Gas type: Propane
Item number: OFG612-LP
- Maximum heat output: 40,000 BTUs for CSA
11.72 KW (40,000 BTUs) for CE & UKCA
- Conceals standard 20 lbs / 5 kgs propane tank (not included)
- Certification: CSA & CE & UKCA Certified
- Media: 6.6 lbs / 3 kgs lava rock (included)
- Warranty: 1 year
- PVC cover included

Available colors:



Light Gray
OFG612LG

Dark Gray
OFG612DG

TANK COVER

ROUND TANK COVER

20 in / 51 cm H

Product Description:

- Item Number: ONB017
- Body construction: Glass-fiber reinforced concrete
- Product size: 15.7 × 15.7 × 20 in
40 × 40 × 50.8 cm
- Product weight: 27.5 lbs / 12.5 kgs

Available colors:



Light Gray
ONB017LG

Dark Gray
ONB017DG

SQUARE TANK COVER

20 in / 51 cm H

Product Description:

- Item Number: ONB021
- Body construction: Glass-fiber reinforced concrete
- Product size: 15.7 × 15.7 × 20 in
40 × 40 × 50.8 cm
- Product weight: 30.1 lbs / 15 kgs

Available colors:



Light Gray
ONB021LG

Dark Gray
ONB021DG

WIND SCREEN



ONC05-001 24.4 × 24.4 × 7 in
62 × 62 × 18 cm



ONC05-004 22 × 22 × 7 in
56 × 56 × 18 cm

Product Description:

- Clear tempered glass
- Easy to assemble and clean
- Stainless steel attachment clips
- For rectangle, square and round fire pits
- Available in different fire pit sizes
- It is recommended to purchase together with fire features

FID#	Matching Fire Table List
ONC05-001	OFG107 / OFG141 / OFG113 / OFG132 - WS
ONC05-004	OFG114 / OFG135 - WS

NATURAL GAS CONVERSION KIT

OCK40-NG01

For 40,000 RTUs Compatibility

OCK50-NG01

For 50,000 BTUs Compatibility



Product Description:

- Convert your propane gas unit to run on natural gas
- It must be installed by a qualified installer or gas technical

DECO. FIRE

Ethanol Tabletop Fireplace

**SMOKELESS
CLEAN
PORTABLE**



KIRA

Tabletop Fireplace
EFG01

Available colors:



Light Gray
EFG01-LG



Dark Gray
EFG01-DG

Specification	Product		Package	
	inch	cm	inch	cm
Length	13.8	35	18.4	46.8
Width	7.1	18	10.9	27.7
Height	6.7	17	17.9	45.5
Weight	29 lbs	13 kgs	31 lbs	14 kgs



Product Description:

- Body construction: Cast concrete
- Stainless steel burner size: L 7.9 × W 3.4 × H 2.5 in
L 20 × W 8.5 × H 6.2 cm
- Flame height: 3.1~4.7 in / 8~12 cm
- Burning time is about 120 minutes
- 4mm thick tempered glass screen & extinguish tool included

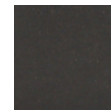
LUSPA

Tabletop Fireplace
EFG02

Available colors:



Light Gray
EFG02-LG



Dark Gray
EFG02-DG

Specification	Product		Package	
	inch	cm	inch	cm
Length	13.8	35	18.4	46.8
Width	7.1	18	10.9	27.7
Height	6.7	17	17.9	45.5
Weight	24 lbs	11 kgs	26 lbs	12 kgs



Product Description:

- Body construction: Cast concrete
- Stainless steel burner size: L 7.9 × W 3.4 × H 2.5 in
L 20 × W 8.5 × H 6.2 cm
- Flame height: 3.1~4.7 in / 8~12 cm
- Burning time is about 120 minutes
- 4mm thick tempered glass screen & extinguish tool included

PAFFU

Tabletop Fireplace EFG03

Available colors:



Light Gray
EFG03-LG



Dark Gray
EFG03-DG



Product Description:

- Body construction: Cast concrete
- Stainless steel burner size: L 3.5 × W 3.5 × H3.5 in
L 8.9 × W 8.9 × H 9 cm
- Flameheight: 5.5~7.9 in / 14~20 cm
- Burning time is about 120 minutes
- Extinguish tool included

Specification	Product		Package	
	inch	cm	inch	cm
Length	6.6	16.7	21.3	54
Width	6.6	16.7	10.9	27.8
Height	5.2	13.2	22	55.8
Weight	35 lbs	16 kgs	37 lbs	17 kgs

ENTTA

Tabletop Fireplace EFG05

Available colors:



Light Gray
EFG05-LG



Dark Gray
EFG05-DG



Product Description:

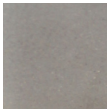
- Body construction: Cast concrete
- Stainless steel burner size: L 3.5 × W 3.5 × H3.5 in
L 8.9 × W 8.9 × H 9 cm
- Flameheight: 5.5~7.9 in / 14~20 cm
- Burning time is about 120 minutes
- Extinguish tool included

Specification	Product		Package	
	inch	cm	inch	cm
Length	6.3	16	21.3	54
Width	6.3	16	10.9	27.8
Height	5.3	13.5	22	55.8
Weight	26 lbs	12 kgs	29 lbs	13 kgs

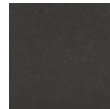
VITO

Tabletop Fireplace EFG04

Available colors:



Light Gray
EFG04-LG



Dark Gray
EFG04-DG



Product Description:

- Body construction: Cast concrete
- Stainless steel burner size: L 3.5 × W 3.5 × H3.5 in
L 8.9 × W 8.9 × H 9 cm
- Flame height: 5.5~7.9 in / 14~20 cm
- Burning time is about 120 minutes
- Extinguish tool included

Specification	Product		Package	
	inch	cm	inch	cm
Length	5.1	13	21.3	54
Width	5.1	13	10.9	27.8
Height	5.1	13	22	55.8
Weight	24 lbs	11 kgs	26 lbs	12 kgs



ESSEN

Tabletop Fireplace EFS01

Product Description:

- Body construction: Steel powder coated base, double layer stainless steel burner
- Flame height: 5.1~7.1 in / 13~18 cm
- Burning time is about 60 minutes
- Extinguish tool included

Specification	Product		Package	
	inch	cm	inch	cm
Length	13.8	35	18.1	46
Width	7.1	18	16.1	41
Height	5.9	15	13.8	35
Weight	18 lbs	8 kgs	22 lbs	10 kgs



VORNADO

Tabletop Fireplace EFS03

Product Description:

- Body construction: Steel powder coated base, double layer stainless steel burner
- Flame height: 5.9~11.8 in / 15~30 cm
- Burning time is about 120 minutes
- Extinguish tool included

Specification	Product		Package	
	inch	cm	inch	cm
Length	7.9	20	19.7	50
Width	7.9	20	10.2	26
Height	19.7	50	25.6	65
Weight	9 lbs	4 kgs	15 lbs	7 kgs



TOMMA

Tabletop Fireplace EFS02

Product Description:

- Body construction: Steel powder coated base, double layer stainless steel burner
- Flame height: 5.9~9.8 in / 15~25 cm
- Burning time is about 60 minutes
- Extinguish tool included

Specification	Product		Package	
	inch	cm	inch	cm
Length	11.8	30	16.9	43
Width	11.8	30	10.6	27
Height	15.4	39	16.5	42
Weight	18 lbs	8 kgs	20 lbs	9 kgs



SEKKA

Tabletop Fireplace EFS04

Product Description:

- Body construction: Steel powder coated base, double layer stainless steel burner
- Flame height: 3.9~9.8 in / 10~25 cm
- Burning time is about 45 minutes
- Extinguish tool included

Specification	Product		Package	
	inch	cm	inch	cm
Length	8.3	16	17.3	44
Width	8.3	16	17.3	44
Height	10.6	27	20.1	51
Weight	18 lbs	8 kgs	24 lbs	11 kgs



VALLE

Tabletop Fireplace EFS06

Product Description:

- Body construction: Steel powder coated base, double layer stainless steel burner
- Flame height: 3.9~9.8 in / 10~25 cm
- Burning time is about 120 minutes
- Extinguish tool included



Specification	Product		Package	
	inch	cm	inch	cm
Length	11.4	29	16.5	42
Width	11.4	29	12.6	32
Height	11.8	30	12.6	32
Weight	20 lbs	9 kgs	24 lbs	11 kgs

AIRO

Tabletop Fireplace EFS05



Specification	Product		Package	
	inch	cm	inch	cm
Length	13.4	34	16.5	42
Width	6.7	17	9.4	24
Height	6.3	16	17.3	44
Weight	18 lbs	8 kgs	22 lbs	10 kgs

Product Description:

- Body construction: Steel powder coated base, double layer stainless steel burner
- Flame height: 3.9~9.8 in / 10~25 cm
- Burning time is about 60 minutes
- Extinguish tool included

NESTIE

Tabletop Fireplace EFS07

Product Description:

- Body construction: Steel powder coated base, double layer stainless steel burner
- Flame height: 3.9~9.8 in / 10~25 cm
- Burning time is about 45 minutes
- Extinguish tool included



Specification	Product		Package	
	inch	cm	inch	cm
Length	8.3	21	20.9	53
Width	8.3	21	10.6	27
Height	11.8	30	21.7	55
Weight	13 lbs	6 kgs	17 lbs	8 kgs

