

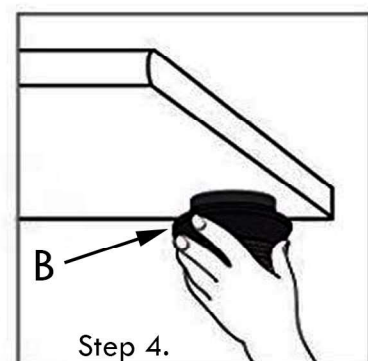
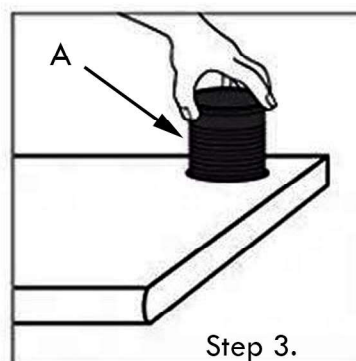
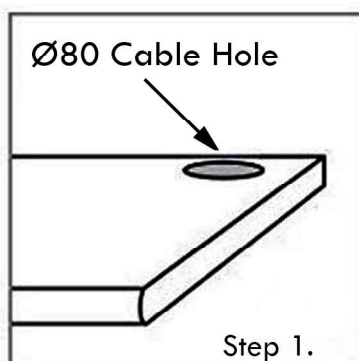
## Osby In-Desk Socket Installation Guide

### Warning

1. The grommet power is designed for light-duty office use (max. 5A or 1.1KW), do NOT use for any other purposes.
2. All electrical cables should be fitted by a qualified electrician.
3. Do not attach power and/or data cables before fitting.
4. Disconnect from mains power before remove/replace optional modules.
5. Do not dismantle or remodel the power module.

### Installation

1. Make sure the desk top has a pre-cut  $\text{Ø}80$  mm cable hole, otherwise use a hole saw to cut one first.
2. Unscrew part B from the main body A.
3. Place part A through the cable hole.
4. Tighten the fixing ring B to secure.



5. To remove/replace the optional RJ45/HDMI module, place part A upside down, then depress the holding clips on the sides of the module

**Certifications:** CE, BS5733