

# SUPERSTEP RIGID KLIKKVINYL INNSTALLASJONSMANUAL OG RETNINGSLINJER

## Forberedelser før installering

La gulvbordene bli liggende i minst 24 timer i romtemperatur uåpnet i original innpakning. Romtemperatur bør være mellom 10 og 25 grader celcius. Pakkene åpnes fortløpende under montering. Klikkvinyll kan legges under, på eller over grunnplan. Klikkgulv skal ikke legges i våtrom. Gulvet bør ikke legges i rom hvor temperaturen går under 10 grader eller over 35 grader celcius. Solskjerming er viktig på ekstra varme dager for å sikre gulvet mot overoppheting.

## Forberedelser undergulv – gulvet skal være jevnt og fast.

Før levering, forsikre deg om at bygget hvor gulvene skal legges er ferdig. På en 2m lengde må avvik i undergulv maksimalt være +/-2 mm, målt med rettholt med 20 mm knaster og målekile. All fukt- og vannrelatert arbeid som muring, pussing, maling, rørlegging, avløp osv må være ferdig. Alle åpninger må være tettet (tak, vinduer, dører). Som en tommelfingerregel bør legging av gulv være noe av det siste som skal overleveres og installeres i nybygg. Det er viktig at montør sjekker undergulv for svakheter og ujevnheter, samt utbedrer dette før installasjon av gulvet. Godkjente undergulv er harde og faste undergulv som betong, sponplater, osb plater, gulvgips eller eksisterende gulv som tilfredstiller planhet, fasthet og hardhet.

## Varme i undergulv

Rigid klikkvinyll kan legges på gulvvarme. Nedstøpte kabler eller nedstøpt vannbåren varme anbefales og sikrer et trykkfast nok underlag. Maks temperatur 27°C.

Varmefoliesystemer består av flere lagvise komponenter og kan totalt sett bli for mykt.

## Ekspansjon

Rigid klikkvinyll er et stabilt materialet som beveger seg mindre enn andre gulv som f.eks parkett. Gulvene skal allikevel legges med minimum 8mm klaring til alle faste installasjoner som vegger, garderobe, ovner, kjøkken, dørkarmer osv.

Ved installasjoner på arealer større enn 60kvm er det anbefalt å øke til minimum 10mm. Dersom arealet er større enn 100kvm eller noen av lengdene er lenger enn 12m må det brukes ekspansjonsfuger eller rådføres med forhandler.

**Forhåndsregler**

Alle gulv kan ripes, lages hakk / inntrykksmerker i, og selv om Rigid klikkvinyl er et ekstremt slitesterkt gulv må det preventivt brukes filknotter og dørmatter for å redusere skitt, sand og forhindre unødvendig slitasje på gulvet. Installatør har ansvar for at undergulv er i henhold til krav og må inspisere alle gulvbordene før de legges ned.

**Vedlikehold og bruk**

Klikkvinyl trenger ikke annet vedlikehold enn rengjøring som støvsuging og gulvvask. Skader/hakk kan utbedres med smeltevoks eller lignende.

Ikke bruk damprengjørere på gulvet, gulvet holdes enkelt rent med vanlig vask.

Ved bruk av tepper må det ikke brukes tepper/matter med gummibakside da disse kan misfarge gulvet.

Bruk kontorstolunderlag evt 5cm brede hjul som ikke misfarger gulv (ikke gummihjul).

I sesonger ved mye direkte sollys og store vindusflater anbefales det å bruke gardiner eller annen solskjerming for å minimere det sterke direkte sollyset på deler av gulvet.

Veldig tunge møbler med «spisse» ben bør ha avlastning/vektfordeling mellom ben og gulv for å ikke lage inntrykksmerker over tid.

Ved ytterlige spørsmål om prosjektering, installasjon eller bruk, ta kontakt med din forhandler.

Se en video av klikksystemet ved å scanne denne QR koden

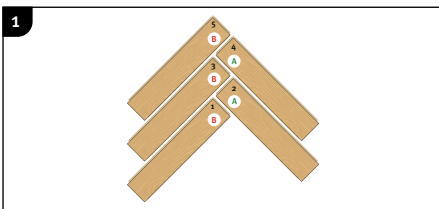




## Important information

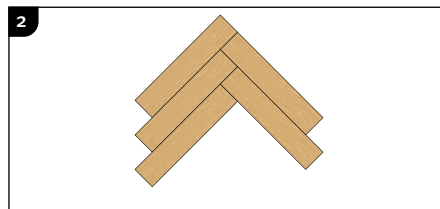
- The flooring must be acclimated a minimum of 24 to 48 hours prior to installation in the room where the installation will take place.
- In larger rooms the flooring must be installed in smaller sections with expansion joints.
- The distance to walls and other permanent pieces of construction elements (such as pillars and kitchen islands) should be minimum 8 mm
- Never install very heavy pieces of furniture such as kitchen islands/cabinets on top of the flooring
- The indoor climate should have a temperature between 10-23 ° C and relative air humidity between 30-60%.
- Always follow the floor manufacturers requirements and specifications regarding subfloor preparation.
- Subfloor must always be solid and completely even. Max 2mm over 2m.
- Be careful installing floor on heatingfoil regarding compressive weakness.

## 1. Build starting triangles



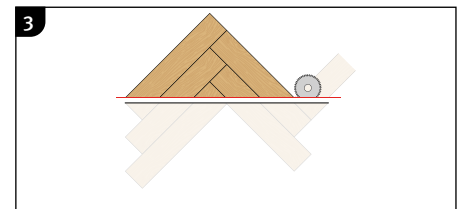
Take B-strips and A-strips and position them as shown above.

**Note!** The number of strips varies depending on the width of the strips used.



Install the strips precisely and in the order indicated by the numbers on the strips. Carefully check the joints between the strips after every strip that is added.

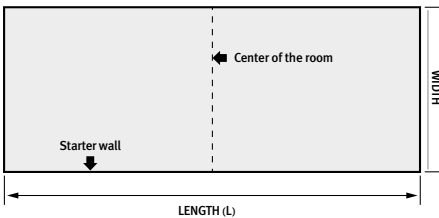
**Note!** No protruding edge may be felt!



Cut the triangle according to the indicated red line. Depending on the kind of saw you use, it may be useful to dismantle the triangle before sawing.

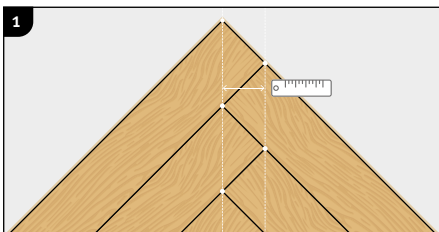
**Note!** The excess (below the line) is to be saved for last row installation.

## 2. Measuring the room

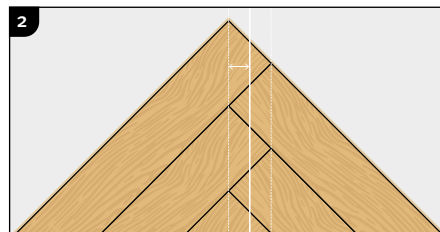


Define the wall from where you intend to start the installation. Mark out the center of the room.

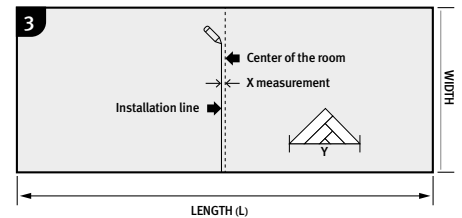
## 3. Calculating the number of triangles



Measure the distance between the two straight lines, originating from the corners of the strips.



Divide this number by two, and get the **X measurement**.



### Drawing the installation line

Start from the center of the room. Parallel offset the line using the **X measurement** as distance.

$$\frac{L + X}{Y} = \text{Quantity}$$

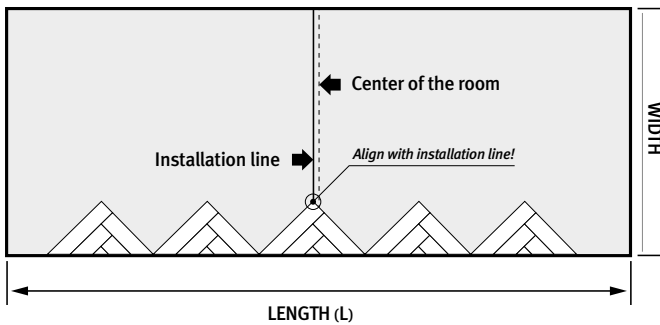
Calculate the number of needed starting triangles with the formula to the left.

**Note!** Round up to the next full number.



Välinge

#### 4. Start installation

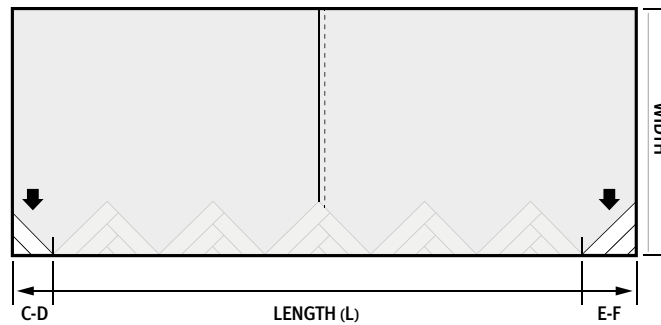


Lay out the triangles with their long side towards the starting wall.  
**Align the center triangle top with the installation line.**

Make sure the underlay material is installed beforehand and the installation line remains visible.

*Note!* Use expansion wedges for the expansion gap.

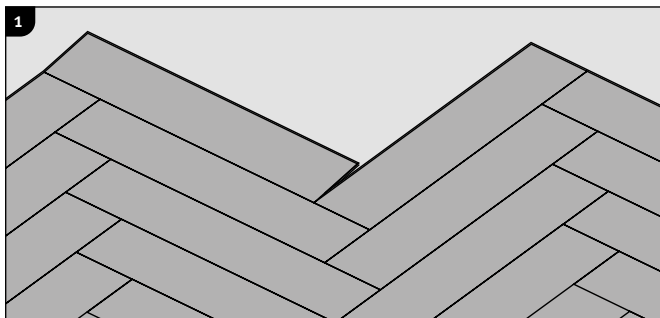
#### 5. Finalising the start row



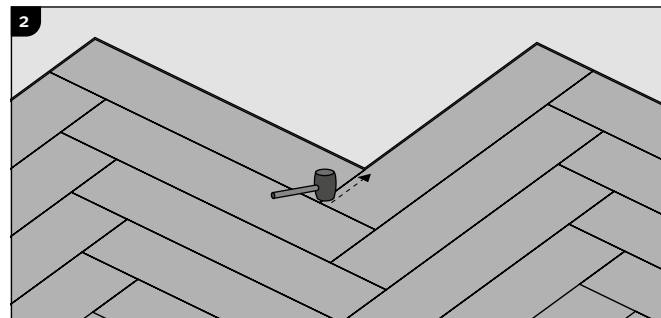
Now cut the distances C-D and E-F from the remaining triangle(s), and position them.

*Note!* In case you have calculated and built an uneven number of triangles, leave the outer two triangles aside. For the case that you have built an even number of triangles, lay one aside.

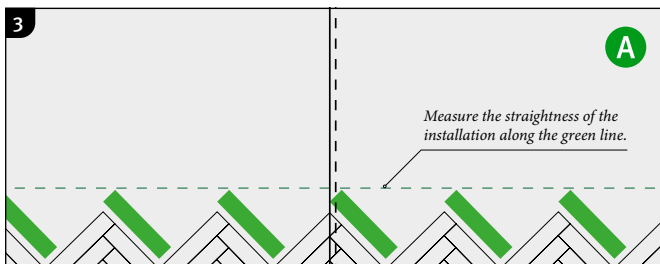
#### Further installation of pattern



The boards need to be locked into one another, using the 5Gi system. To connect a new board you have to use a rubber hammer.

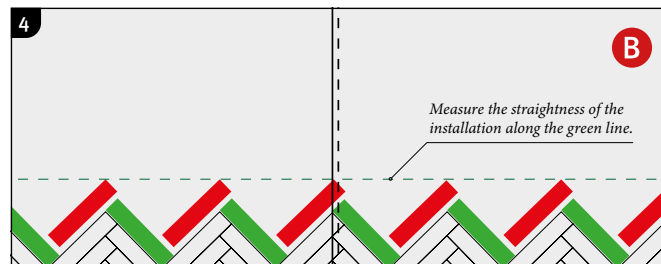


Use a rubber hammer and slightly knock at the 5Gi system to connect the short side. Start in the corner and work towards the end of the board.



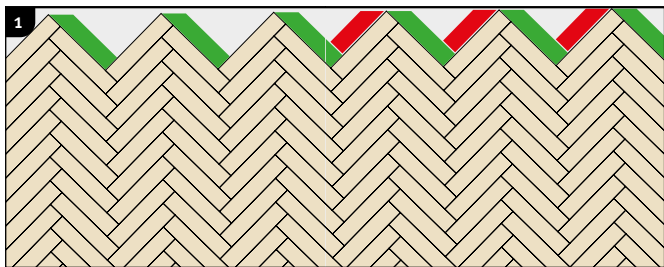
Install **A-strips** to connect all triangles. The joints between the A-strip and the triangle need to be checked very carefully. No protruding edge may be felt!

Cut the most left piece to fit into the room, considering an expansion gap. Measure the straightness of the installation along the green line. Repeat that measuring with the straightedge progressively throughout the installation. Deviations need to be corrected, should they occur (see schematics below).



Now install **B-strips** and cut the most right piece to size.

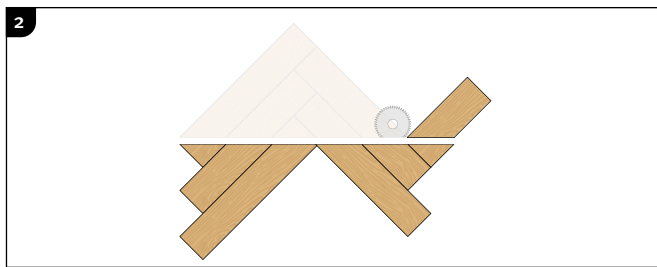
## Last row installation



This alternating installation of A-strips and B-strips continues throughout the whole room. It is important to check frequently that:

- all expansion wedges remain in their position.
- all joints are closed and the strips are locked into one another.
- you follow the installation line.
- the tops of the strips in one line remain straight and perpendicular to the installation line

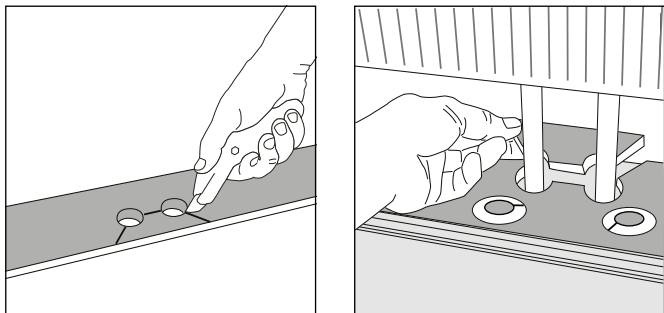
*Note! Measure approx every fifth row.*



### Excess pieces from starting triangles:

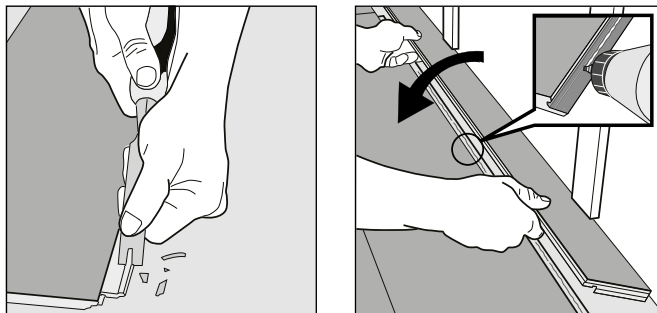
Dismantle the excess material from the starting triangles. Use it to close the open gaps to the finishing wall. Use the leftover from strips 1, 2 etc. consecutively and cut to size if necessary.

## Installation around radiator/heating pipes



Drill holes two times larger than the diameter of the pipes. Remove a piece of the strip with a utility knife or a saw. Put the strip on one side of the pipes and the removed piece on the other side.

## When angling is not possible



Remove the locking element according to the picture. Use an applicable glue to connect the strips. Press- place wedges between the glued strip and the wall.