

## Hexahydrocannabinol

 Sample ID: SA-10052021-4549  
 Batch: #5.9.21  
 Type: In-Process Materials  
 Matrix: Concentrate - Distillate

 Received: 10/05/2021  
 Completed:

**Client**  
 Colorado Chromatography  
 1050 S Progress Way, Unit 105  
 Parker, CO 80134  
 USA

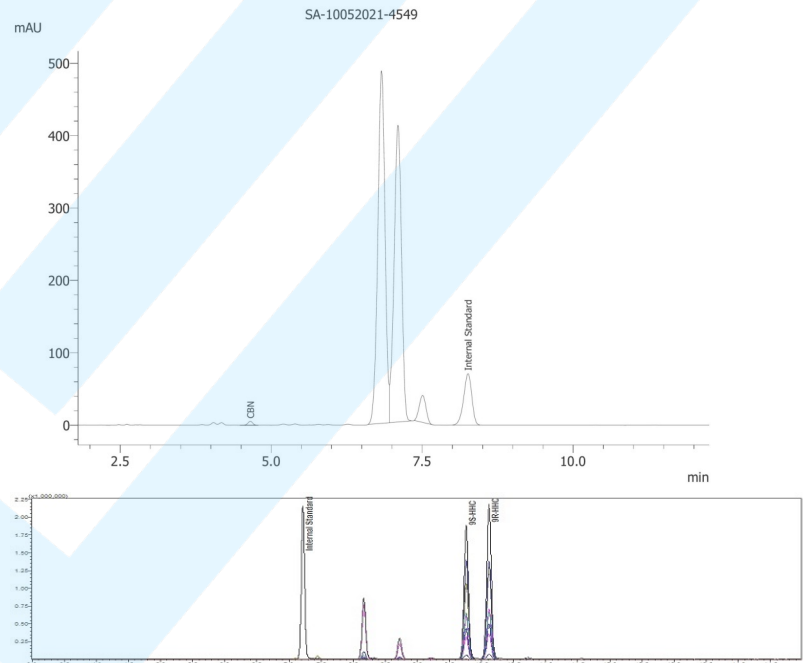

### Summary

Test	Date Tested	Status
Cannabinoids		Pending
Cannabinoids (Additional)		Pending

### Cannabinoids by HPLC-PDA and GC-MS/MS

<b>ND</b>	<b>0.171 %</b>	<b>0.171 %</b>	<b>Not Tested</b>	<b>Not Tested</b>	<b>Yes</b>
Total Δ9-THC	CBN	Total Cannabinoids	Moisture Content	Foreign Matter	Internal Marker Recovered

Analyte	LOD (%)	LOQ (%)	Result (%)	Result (mg/g)
CBC	0.0095	0.0284	ND	ND
CBCA	0.0181	0.0543	ND	ND
CBCV	0.006	0.018	ND	ND
CBD	0.0081	0.0242	ND	ND
CBDA	0.0043	0.013	ND	ND
CBDV	0.0061	0.0182	ND	ND
CBDVA	0.0021	0.0063	ND	ND
CBG	0.0057	0.0172	ND	ND
CBGA	0.0049	0.0147	ND	ND
CBL	0.0112	0.0335	ND	ND
CBLA	0.0124	0.0371	ND	ND
CBN	0.0056	0.0169	0.171	1.71
CBNA	0.006	0.0181	ND	ND
Δ8-THC	0.0104	0.0312	ND	ND
Δ9-THC	0.0076	0.0227	ND	ND
Δ9-THCA	0.0084	0.0251	ND	ND
Δ9-THCV	0.0069	0.0206	ND	ND
Δ9-THCVA	0.0062	0.0186	ND	ND
<b>Total Δ9-THC</b>			<b>ND</b>	<b>ND</b>
<b>Total CBD</b>			<b>ND</b>	<b>ND</b>
<b>Total</b>			<b>0.171</b>	<b>1.71</b>



ND = Not Detected; NT = Not Tested; LOD = Limit of Detection; LOQ = Limit of Quantitation; RL = Reporting Limit; Δ = Delta; Total Δ9-THC = Δ9-THCA \* 0.877 + Δ9-THC; Total CBD = CBDA \* 0.877 + CBD;



10/08/2021



## Hexahydrocannabinol

Sample ID: SA-10052021-4549  
Batch: #5.9.21  
Type: In-Process Materials  
Matrix: Concentrate - DistillateReceived: 10/05/2021  
Completed:**Client**  
Colorado Chromatography  
1050 S Progress Way, Unit 105  
Parker, CO 80134  
USA

## Cannabinoids by HPLC-PDA, LC-MS/MS, and/or GC-MS/MS

Analyte	LOD (%)	LOQ (%)	Result (%)	Result (mg/g)
(9R)-HHC			52.1	521.0
(9S)-HHC			48.8	488.0

ND = Not Detected; NT = Not Tested; LOD = Limit of Detection; LOQ = Limit of Quantitation; RL = Reporting Limit;  $\Delta$  = Delta; Total  $\Delta$ 9-THC =  $\Delta$ 9-THCA \* 0.877 +  $\Delta$ 9-THC; Total CBD = CBDA \* 0.877 + CBD;

10/08/2021

