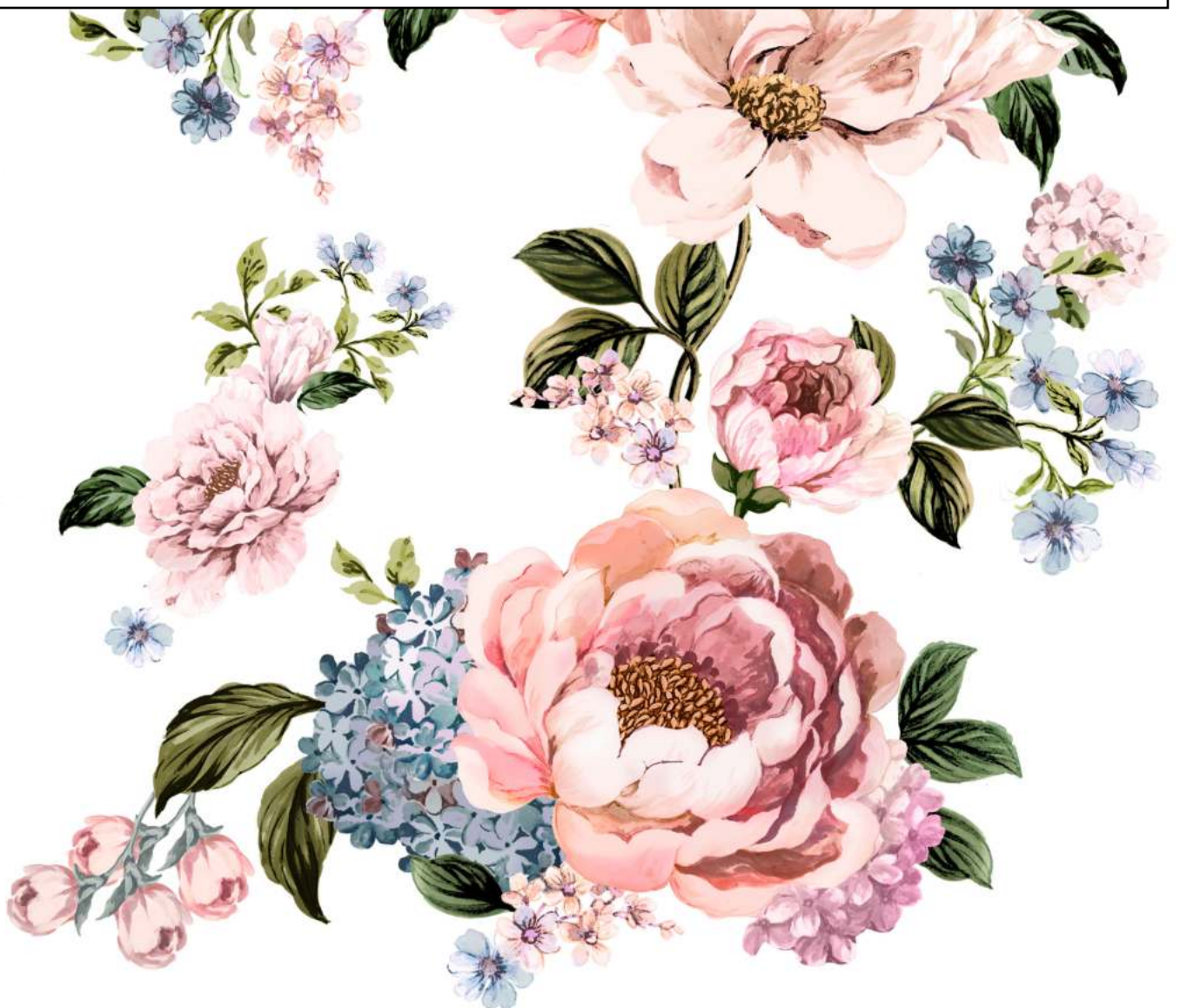




JASMIN ABU NABA'A

SPRING SUMMER 2022





ZAHRA COLLECTION

Spring has sprung in our Spring Summer 2022 collection, Zahra, meaning 'flower' and 'blossoms' in Arabic. The collection - spotlighting a mix of heritage and the brand's first exclusive print- is a love letter to the magic we hold as mothers, daughters, sisters, and friends. The Zahra print is a portrayal of the designer's favorite flowers; Hydrangeas, Peonies, and Magnolias. Each flower symbolizes one of her daughters and are illustrated in their favorite colors. Zahra, also meaning 'beautiful' and 'radiance,' delivers a blissful lineup of awe-inspiring silhouettes that allure inimitable romance. Figure-flattering cuts are decorated by delicate blooms and soft hues, revealing a fresh dose of femininity iconic to the brand. Each piece is inspired by an unbreakable bond and unconditional love.



Jasmin Abu Naba'a is a ready-to-wear brand that celebrates light-hearted femininity with a spark of romance and fresh optimism. Inspired by loved ones, travel, art, and nature, the brand reimagines classical silhouettes to uplift wardrobe essentials and make any occasion feel special. Designed with a blush amalgam of versatility and timeless simplicity, femininity and practicality will always be essential to its vision.



A woman with dark hair pulled back, wearing a white floral print romper with a tie belt and white sandals with large floral details. She is standing in front of a light-colored stone wall with green foliage in the background.

BON
VOYAGE
ROMPER

\$410

S M L XL

100% Silk



CAPRI DRESS

\$410

S M L XL

50% Linen 50% Cotton



TERRENAS DRESS

\$545

S M L XL

100% Cotton



BRISA DRESS

\$380

S M L XL

50% Linen 50% Cotton



AMAL
DRESS

\$545

S M L XL

50% Silk 50% Linen





PATRICIA DRESS

\$410

S M L XL

50% Silk 50% Linen



NAEEM
TOP

\$230

S M L XL

50% Silk 50% Linen

GALERIA
PANTS

\$220

S M L XL

50% Silk 50% Linen



BLOOM ROMPER

\$350

S M L XL

100% Cotton



PRISCILLA
DRESS

\$400

S M L XL

50% Linen 50% Cotton





MILLA CROPPED TOP

\$280

S M L XL

50% Linen 50% Cotton



S O R Y
D R E S S

\$ 4 2 5

S M L XL

50% Linen 50% Cotton





ZUMA
DRESS

\$450

S M L XL

50% Linen 50% Cotton





LA MARINA DRESS

\$380

S M L XL

50% Linen 50% Cotton

A woman with dark hair pulled back is standing in a garden. She is wearing a white two-piece dress. The top is a strapless, square-neckline crop top. The skirt is long and flowing, featuring a large, vibrant floral print in shades of pink, orange, and blue. The background is a light-colored stone wall with green foliage in the foreground and background.

FRANCH DRESS

\$460

S M L XL

50% Linen 50% Cotton



LA MARINA DRESS

\$380

S M L XL

50% Linen 50% Cotton

A woman with her hair pulled back is standing in a courtyard, wearing a long, sleeveless, light blue dress with a large floral pattern of pink and white roses. She is looking slightly to her right. The background is a light-colored, textured wall with green foliage visible in the foreground and to the right.

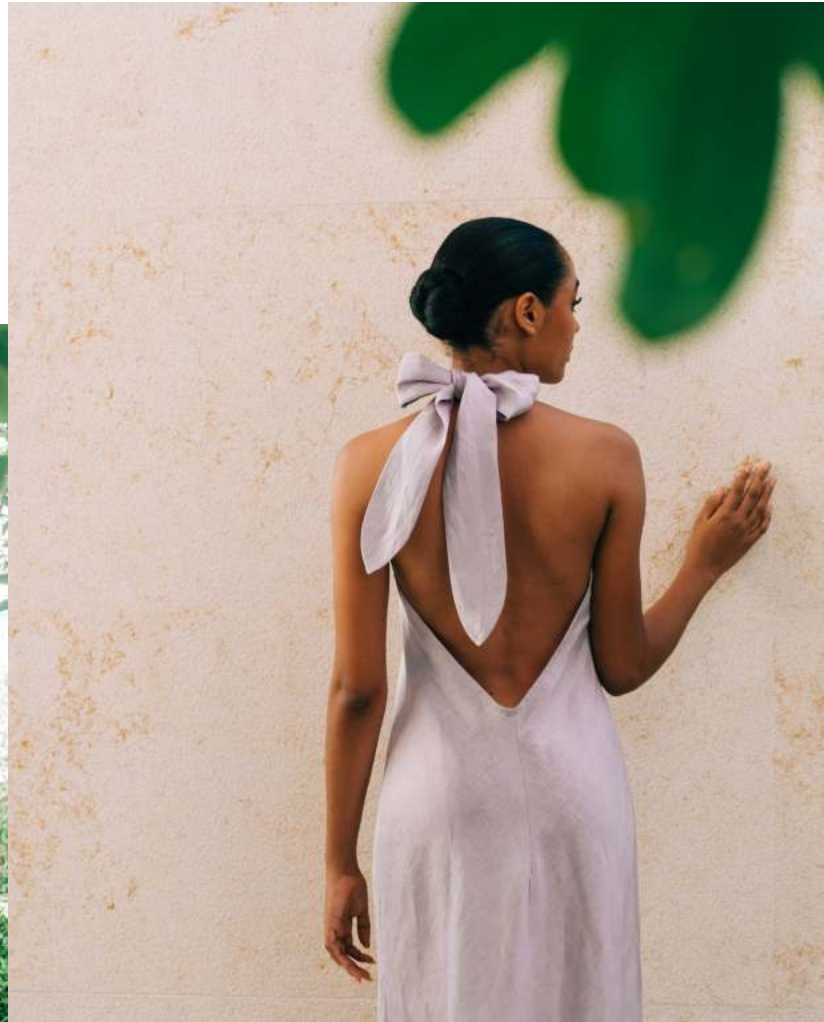
OU M
DRESS

\$1,200

S M L XL

100% Silk





LA MARINA DRESS

\$380

S M L XL

50% Linen 50% Cotton



TINTO
DE
VERANO
BLOUSE

\$280

S M L XL

50% Silk 50% Linen

LILLET
SHORTS

\$160

S M L XL

50% Silk 50% Linen



NENI DRESS

\$90-110

2 4 6

50% Linen 50% Cotton



LEILI SET

Top \$45 Shorts \$65

S M L XL

50% Linen 50% Cotton



MIRI ROMPER

\$90

2 4 6

100% Cotton



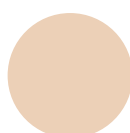
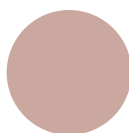


JASMIN ABU NABA'A

The Zahra collection will be available on pre-order.

Delivery time: 4- 5 weeks.

All of the designs can be made in any of the different print options listed below, as well as any of the collection's core colors.





JASMIN ABU NABA'A

Size Chart

Size	Bust	Waist	Hip
X-Small	33 IN	26 IN	35 IN
Small	35 IN	28 IN	37 IN
Medium	37 IN	30 IN	39 IN
Large	39 IN	32 IN	41 IN
X-Large	41 IN	34 IN	43 IN



For orders and other inquiries:

info@jasminabunabaa.com

+1 (809) 659-1688

[@jasmin.abunabaa](https://www.instagram.com/jasmin.abunabaa)



JASMIN ABU NABA'A