



User Manual

Model : BP50

WARRANTY CARD ATTACHED

Thank you for choosing the b-MOLA product.
Please read this manual before using and maintaining the appliance.
Please read the 'Safety Instructions' carefully before using the appliance.
Failure to follow the instructions to use this appliance may result in injury
or property damage.
Please keep this manual for future reference.
Please keep the warranty card for future servicing.



CONTENTS

Basic Information	02-05
Safety Instructions	02-03
NCCO Technology	04
Main Parts & Components	05
Getting Started	06-09
First Time Use	06
Operating Instructions	07-09
Care & Maintenance	10-11
Cleaning Instructions	10
Filter Replacement & Maintenance	11
Other Information	12-14
FAQs	12
Trouble Shooting	13
Product Specifications	14

Please Follow Instructions Below

Safety Instructions

Basic Information

- This appliance can be used by children aged from 8 years and above and persons with reduced physical, sensory or mental capabilities or lack of experience and knowledge if they have been given supervision or instruction concerning use of the appliance in a safe way and understand the hazards involved. Do not allow children to use this device as a toy. Cleaning and maintenance shall not be made by children without supervision.
- If the power cord is damaged, you must have it replaced by the manufacturer, its service agent or similarly qualified persons to avoid a hazard.
- Before cleaning or maintenance, you must disconnect the appliance from the power supply.
- To avoid injury of operation or others, please follow safety instructions.
- The classification of the following two icons is according to the degree of risk or injury caused by the incorrect operation:



WARNING

This icon indicates that "if not follow the warning, it would cause injury or death."



PRECAUTION

This icon indicates that "if not follow the precaution, it would cause injury or property loss."

- The following icons are the types of instructions that must be followed:



PROHIBITIONS



MANDATORY MATTERS



- Do not move the appliance by pulling on the power cord. Otherwise, the power cord could be damaged, resulting in fire or electric shock.
- Do not damage the power cord or the plug.
- Do not cut, refitting, over twisting, extruding power cord.
- Do not put the power cord near any heat sources.
- Do not put any heavy objects over the power cord. Otherwise, the power cord could be damaged, resulting in fire or electric shock.
- Do not use a power source other than 110-240V~ 50/60Hz. Failure to comply may cause a fire.
- Do not insert your fingers or any other objects into the air inlet or air outlet to prevent injury, electric shock or malfunctioning of the appliance.
- Do not handle the plug with wet hands. Failure to comply could result in electric shock.
- Do not place the appliance where water or other liquids easily splash on it. Failure to comply may result in short-circuiting of the appliance and cause fire or electric shock.



WARNING



- Do not disassemble, repair or modify the appliance by yourself. Otherwise, it may cause fire or electric shock. For maintenance, please consult your dealer or authorized service centre.



WARNING

- **Stop using the appliance and unplug it from the power supply immediately if any following situations occur:**
 - The appliance stops operating when moving the power cord.
 - If any control button fails.
 - If the circuit breaker works or the fuse burns out.
 - If the power cord or plug is abnormally hot.
 - If you notice a burnt odour or abnormally sound or vibration.
 - If there are any other abnormal phenomena or faults.

Please consult your dealer or authorized service centre for inspection and maintenance.
- **Please clean the plug regularly.**
 - If there is dust and moisture on the plug, it may damage the insulation part of the plug and cause fire.
 - Unplug the plug and wipe it with a dry cloth.
 - Unplug the appliance when not use for a long time.
- **Make sure to unplug the power supply before maintaining the appliance.**

Otherwise, the appliance may run suddenly and cause electric shock or injury.
- **Please plug the power plug completely into the power socket.**

Failure to comply may cause fire or electric shock.

 - Do not use damaged power plugs or power sockets.
- **Do not allow pets to chew and touch the machine and accessories.**
 - The power plug should not be placed in a place where pets can touch it to prevent accidents.



- ⊘ ■ **It is prohibited to place this product in the following places**
 - Unstable places.

Otherwise, the appliance may tip over, resulting in injury or equipment damage.
 - Bathrooms, kitchens or places with high humidity/temperature.

Otherwise, the appliance may crack or electrical leakage, resulting in the risk of fire, electric shock or injury.
 - Places where oil or flammable gas may leak.

Failure to comply may lead to fire as the appliance inhaled combustible substances.
 - Near heating devices, fireplaces or any heat sources.

Otherwise, the appliance may overheat and cause a fire.
- **Do not use gasoline or other volatile mixed solvents to wipe the unit**

Otherwise, the appliance may rupture or be short-circuited, resulting in injury, fire or electric shock.
- **Do not use this appliance when you are using indoor smoke-type insect repellents.**
 - Otherwise, the insecticide may accumulate in the product and be discharged through the air outlet, endangering your health.
 - Ventilate the room thoroughly before using the appliance.
- **Do not block the air inlet or outlet by placing clothes, books or other obstacles.**
- **Do not sit, stand or lean on this product as it may lead to potential injury or unit damage.**
- **Do not allow ignited cigarettes or incense near the appliance.**
- **Do not spray any flammable materials such as insecticides or air fresheners around this product.**



- ! ■ **Do not unplug the appliance by pulling its power cord.**

Otherwise, the power cord may be damaged, resulting in fire or electric shock.



Patented NCCO Air Purification Technology Brings Fresh and Clean Air

Nano Confined Catalytic Oxidation (NCCO) Air Purification Technology was invented by member of the HKUST Entrepreneurship Program and obtained global patents. It can solve indoor air quality problems in an all-around way, create a home/office environment with fresh air, and protect you and your family's health.



Features of NCCO Technology

- ◆ Continuously removes bacteria and viruses efficiently.
- ◆ Effectively decomposes gaseous carcinogens, such as formaldehyde.
- ◆ Decompose harmful pollutants into harmless water molecules and carbon dioxide, which will not cause secondary pollution.
- ◆ Under normal maintenance conditions, Pet NCCO Reactor can use for a long time. Since there is no need to replace Pet NCCO Reactor frequently, the operating cost is much lower than similar products on the market.
- ◆ Effectively remove offensive odour.
- ◆ NCCO is widely used in hospitals, elderly care centres, schools and public toilets.

About Intelligent Power-Off Protection System

After 8 hours of continuous operation, the air purifier will automatically power off and enter sleep mode for 30 minutes. Press the power switch to restart the appliance during sleep mode.

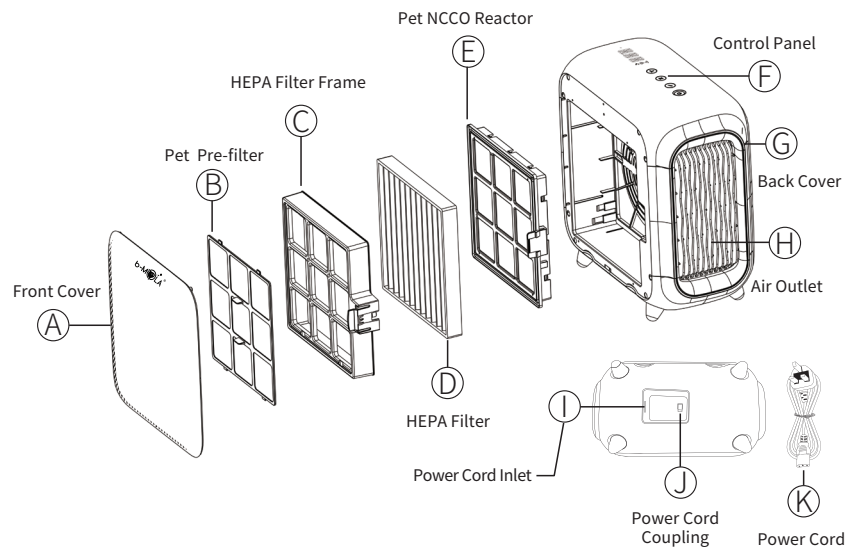
Placement of air purifier

- **Maintaining efficient air circulation**

Place the appliance on a dry, stable, level, and horizontal surface. Leave at least 15 cm free space from walls, furniture, curtains or any objects.
- **Do not place the appliance exposed to direct sunlight, directly below an air conditioner, or in a room with apparent temperature change.**

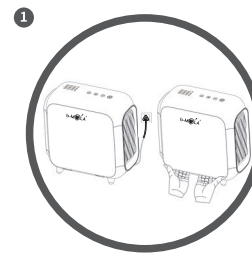
Otherwise, it may cause product deformation, aging, discoloration or shorten the lifespan.
- **Do not use the same power supply with TVs, radios and other electrical appliances.**
- **Do not place anything on top of the appliance. Otherwise, it may cause the product to function incorrectly or malfunction.**
- **Place the appliance at least 1 meter away from electrical devices such as televisions or radios to prevent interference.**
- **Do not block the air inlet and outlet by placing articles on the air outlet or in front of the air inlet.**

Illustration Diagram:

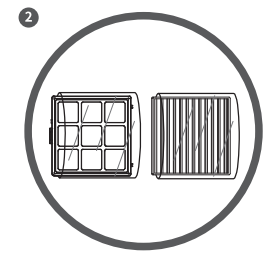


1. Remove all packaging and clean all removable parts and the grooves of the product with a soft, dry cloth.
2. Make sure the power sockets and extension units meet the requirements of the product. Make sure the product connects to the power supply before use.
3. This product is equipped with a sensor to monitor the position of the filter unit. If the filter unit is not in the correct position, the product will not work.
4. It is normal for the product to emit warm air with a mineral smell from the air outlet when the product first works. It is because the catalytic oxidation reaction is going on inside the Pet NCCO Reactor.

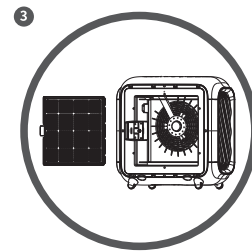
Installing the filters



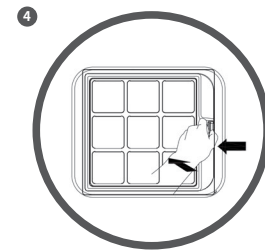
Unplug the appliance, find the two grooves under the front panel, and remove the front panel by pulling it outward.



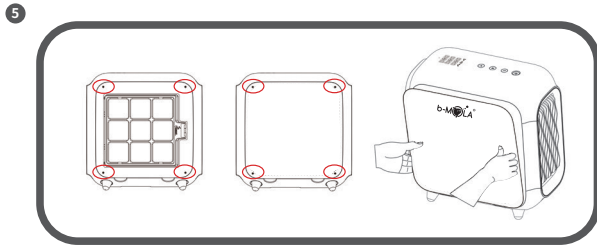
Remove all packaging before use.



Place the Pet NCCO Reactor into the air purifier.



Install HEPA filter and Pet Pre-filter in sequence into HEPA filter frame.
Place the filtration unit into the device.
There is a click sound to indicate all the filters install successfully.

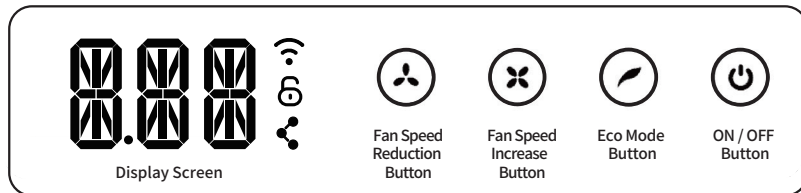


Align the front cover with the four positioning posts on the body, gently push inward, and the magnet will attach tightly to the body, and the front cover installation is complete.

ATTENTION

Please make sure all filters are installed.

Control Panel Buttons:



*This appliance supports 802.11 b/g/n 2.4GHz & 5GHz WiFi. If there is any connection problem, please contact your router supplier for problem solution.

1. Power On/Off Switch

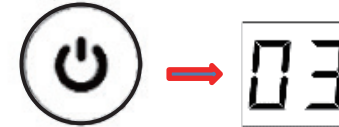


ON: Press ON/OFF Switch to turn on the appliance. There will be a music sound to indicate that the power is on.

OFF: Press ON/OFF Switch again to turn off the appliance.

Note: Press and hold the reset button for 5 seconds when the machine is turned on to reset WiFi mode.

2. Default Fan Speed & Memory Function



Default Setting: The fan speed will be restored to the default setting '03' when the appliance is unplugged from the power supply.

Memory Function: Use the power on/off button to turn off the appliance, and when it turns on again, it will maintain the same fan speed as before.

3. Adjust Fan Speed



Increase Speed: Each time you press the fan speed increase button, the speed will be increased by one level.

Reduce Speed: Each time you press the fan speed reduction button, the speed will be decreased by one level.

4. Turbo Mode



When the fan speed reaches level 10, press the speed increase and reduction buttons simultaneously to enter the Turbo Mode (SS).

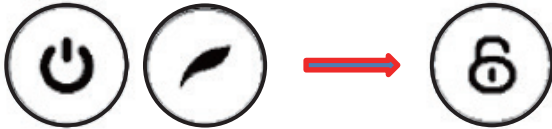
'SS' mode is recommended to decontaminate a highly polluted environment quickly. Press the fan speed reduction button to exit 'SS' mode.

5. ECO Mode



Press the Eco mode button to enter Eco Mode and press once more to exit. Eco mode is recommended for sleeping time.

6. Child Lock Mode



Press the power on/off button and the ECO mode button for 5 seconds to activate the child lock. You will hear a reminder alarm, the child lock icon appear. Repeat the above steps to exit Child Lock Mode.

Note: When the child lock is activated, all buttons are not responsive.

7. Filter Installation Alert



If the HEPA filter/Pet NCCO Reactor does not install properly, the display panel will show "EE". The product will not operate and making a warning alarm. Please reinstall the HEPA filter/Pet NCCO Reactor.

ATTENTION

- The product equips with an intelligent protection system. It will stop operating with all indicating lights off for 30 minutes after 8 hours consecutive operation. The appliance will resume working automatically after 30 minutes. The user can reactivate the product at any time by pressing the Power On/Off button.
- When the product is left idle for 1 minute, the power button indicator will dim while other indicators will off.

! Always unplug the appliance before cleaning or carrying out other maintenance except replacing filters.



ATTENTION

- When using chemically treated cloth, be sure to follow the instructions.
- Do not leave disassembled parts unattended while performing maintenance.
- Do not operate the product without the filter installed, as this may cause irreversible damage to the Pet NCCO Reactor.
- The efficiency of the Pet NCCO Reactor will significantly decline if the HEPA filter does not replace as indicated in instructions.

Cleaning Instructions



Cleaning the body of air purifier

Use a soft, dry cloth to clean the interior and exterior of the air purifier.

ATTENTION

Never use abrasive, aggressive, or flammable cleaning agents such as bleach or alcohol to clean any part of the air purifier.



Cleaning air inlet and outlet

Clean the air inlet and outlet with a soft brush or vacuum cleaner.



Cleaning Pet Pre-filter

Pet Pre-filter is washable.

To optimize the lifespan of the Pet Pre-filter, make sure it is air-dried thoroughly after cleaning.



WARNING

Never rinse or soak the HEPA filter or NCCO Reactor with water.

Filter Replacement & Maintenance

Care & Maintenance

1. Filter lifespan may vary on the environment, usage and location of the unit.
2. To optimize the performance of the air purifier, use the filter recommended only.
3. Clean the Pet Pre-filter regularly.
4. Users can follow the colour change indicators below to decide whether to replace the HEPA filter.
5. Turn off the air purifier but do not unplug from the power socket when replacing filters.

Recommended Filters Cleaning /Replacement Intervals and Solutions

Filter	Intervals	Solution
Pet Pre-filter	/	Washing
HEPA Filter	Every 6 - 12 Months *	Replacement
Pet NCCO Reactor	Sustainable use**	Sustainable use

* The filters cleaning and replacement intervals may vary on the operating environment.

** The Pet NCCO Reactor may cover with dust or oily substances if the HEPA filter does not replace regularly or is damaged. It may result in a significant decline in the efficiency of the Pet NCCO Reactor and require replacement.

HEPA FILTER COLOUR CHANGE INDICATOR

No need to replace	Recommended replacement	Need to replace
--------------------	-------------------------	-----------------

FAQs

Other Information

- Q1** The device emits a "beep-beep" alarm and does not operate. The display screen shows "EE".
- A** Please check if all filters are properly installed. If not, reinstall them.
- Q2** Is HEPA filter washable?
- A** HEPA filters are made of composite materials. Washing with water will significantly decrease its performance.
- Q3** The air quality does not improve despite operating for a long time.
- A** It will take a longer time for the air quality to improve when using this product in a very polluted environment. Recommended to use higher fan speed or allow it to run longer if necessary.
- Q4** The appliance produces a burnt smell or smoke.
- A** Turn off the appliance and disconnect it from the power supply immediately. Call the customer service center or contact a qualified agent.
- Q5** The appliance releases a mineral smell during the first time use.
- A** It is normal as catalytic oxidation reaction is taking place inside the Pet NCCO Reactor. The smell is harmless to human body, and it would disappear after a period of operating time.
- Q6** The display flashes "HP" intermittently, and the red-warning light on the body is on.
- A** This is to remind the user that the device has been running for 3,000 hours. Need to check if the HEPA filter should be replaced.
- (1) Please make sure the machine is on and running.
 - (2) Remove the HEPA filter(s).
 - (3) The display panel will show "EE". The product will not operate and making a warning alarm.
 - (4) Replace the HEPA filter(s).
 - (5) "EE" will disappear and the device back to normal.

Problems	Solutions
The device does not operate.	Check if the device connects to the power supply. Turn on the device.
Display screen shows "EE". The device does not operate and making a "DiDiDiDi" warning alarm.	Check if the filters install correctly. Reinstall all filters.
The air quality does not improve despite operating for a long time.	It will take a longer time for the air quality to improve when using this product in a very polluted environment. Recommended to use higher fan speed or allow it to run longer if necessary.
	The filters may require cleaning or replacement.
The airflow that comes out of the air outlet is significantly weaker than before.	The filters may require cleaning or replacement. Clean or replace the filter(s). (See "Filter cleaning and maintenance")
	Check if the packing material is removed from the filters.
The device makes an abnormal noise.	Check if the packing material is removed from the filters.
	Make sure the air inlet and outlet are not blocked. Remove all objects that block the air inlet and outlet. Possible malfunction. Call the customer service center or contact a qualified agent.
The device produces a burnt smell or smoke.	Turn off the device and disconnect it from the power supply immediately. Call the customer service center or contact a qualified agent.

Power Supply	Rated Voltage	110-240V~	
	Rated Frequency	50-60Hz	
Power Consumption (W)	Mode	Lowest	3
		Highest	15
		Turbo	20
Airflow Volume (m ³ /hr)	Mode	Lowest	35
		Highest	143
		Turbo	170
Noise Level (dB)	Mode	Lowest	36
		Highest	52
		Turbo	56
Product Dimensions (L x W x H) (mm)	340 (L) x 200 (W) x 348 (H)		
Net Weight (kg)	4.9		
Treatment System	Active Oxygen Generator	Sterilization	
	Pet Pre-filter	Remove dust and hair	
	HEPA Filter	Remove dust, hair and airborne particles such as allergens and pollen, bacteria, viruses and fungus.	
	Pet NCCO Reactor	Remove odour and decompose harmful pollutants such as formaldehyde and VOCs.	