



Operation Manual

Model No.: BM10

WARRANTY CARD ATTACHED

Thank you for choosing b-MOLA NCCO Air Treatment Unit.
Before using and maintaining this appliance, please read this manual carefully and thoroughly.
Please read the "Safety Instructions" carefully before using this appliance.
Failure to follow the instructions to use this appliance may result in injury or property damage.
Please keep this manual in a safe place for future reference.
Please keep the warranty card for future repairs.



CONTENT

Basic Information	02-06
Safety Instructions	02-03
Setting & Operation Requirement	04
NCCO Technology	05
Main Parts & Components	06
Getting Started	07-10
First-time Operation	07
Operating Instructions	08-10
Care & Maintenance	11-12
Cleaning Instructions	11
Filter Replacement & Maintenance	12
Other Information	13-15
FAQs	13
Trouble Shooting	14
Product Specification	15

Basic Information

- This appliance can be used by children aged from 8 years and above and persons with reduced physical, sensory or mental capabilities or lack of experience and knowledge if they have been given supervision or instruction concerning use of the appliance in a safe way and understand the hazards involved. Do not let children use this device as a toy. Cleaning and user maintenance shall not be made by children without supervision.
- If the supply cord is damaged, it must be replaced by the manufacturer, its service agent or similarly qualified persons in order to avoid a hazard.
- Prior to cleaning or maintenance, the appliance must be disconnected from the supply mains.
- **In order to avoid injury of operatives or others, please follow safety instructions.** These 2 symbols below are classified as according to the risk or degree of injury caused by incorrect operation:



WARNING

This symbol indicates 'if not follow the warning, it would cause injury or death.'



PRECAUTION

This symbol indicates 'if not follow the precaution, it would cause injury or property loss.'

- The following symbols are the types of instructions that must be followed:



PROHIBITION



MANDATORY

- **Do not move the unit by pulling on the power cord.**
 - (Otherwise the power cord could be damaged, resulting in fire or electric shock.)
- **Do not damage the power line or the plug.**
 - Do not cut, refitting, over twisting, extruding power line. Do not put the power line near to any heat sources, do not put any heavy objects over the power line. (Otherwise the power line could be damaged, resulting in fire or electric shock.)
- **Do not use power source other than DCSV 2A.**
 - (Otherwise the power line would overheat, resulting in fire.)
- **Do not put fingers, metal, or any other objects into air inlet / outlet or gap.**
 - (Otherwise it could result in electric shock or injury.)
- **Do not touch power plug with wet hand.**
 - (Otherwise it could result in electric shock.)
- **Do not place the unit in a location near a water / liquid source or where it can easily get wet.**
 - (Otherwise, the unit may be short-circuited, and resulting in fire or electric shock.)
- **It is prohibited to place small objects near any area of the unit where a child or infant might be liable to touch.**
 - (If the child or infant eat these small objects by mistake, please immediately take the child or infant to hospital.)
- **It is prohibited to place the battery in the fire or near heat.**
 - (Damage to the battery outer insulation cover or release valve could cause personal injury.)



WARNING



- **Do not disassemble, repair, or modify the unit on your own.**
 - (Otherwise it could result in fire or electric shock. If maintenance work is needed, please contact Customer Service Centre or the distributor.)



WARNING



- **When any of the following situations occur, please stop operating the unit and disconnect the power supply immediately.**
 - (Otherwise, it may lead to electric shock, fire or smoke.)
 - When the power line is moved, the unit stops operating.
 - If any control button fails.
 - If the circuit breaker works or the fuse burns out.
 - If the power line or plug is unusually hot.
 - If you notice burning odour or abnormal sound or vibration.
 - If there are any other abnormal phenomena or faults.
- Stop operating unit, pull out power plug, and contact Customer Service Centre or distributor for inspection and maintenance.
- **Please regularly clean the plug.**
 - (If there is dust and moisture on the plug, it may damage the insulation part of the plug and cause fire.)
 - Pull out the power plug and wipe it with a dry cloth.
 - Pull out the power plug when the unit is not used for a long time.
- **Make sure disconnect the power supply before maintaining the unit.**
 - (Otherwise the unit may suddenly operate, resulting in electric shock or injury.)
- **Please insert the power plug completely into the power socket.**
 - (Otherwise it may cause fire or electric shock if the power line is overheated.)
 - Do not use damaged power plugs or power sockets.



WARNING



- **Do not place the unit in the following places:**
 - Unstable place.
 - (Otherwise the unit may be fall off, resulting in injury or damage to the unit.)
 - Bathroom, kitchen or other places with high humidity / temperature.
 - (Otherwise the unit may be damaged or suffer from electric leakage, resulting in fire, electric shock or personal injury.)
 - Places where oil or flammable gas may leak.
 - (Otherwise fire may occur in the inhaled monitor, leading to fire.)
 - Near heater or other heat sources.
 - (Otherwise the unit may be overheated, leading to fire disaster.)
- **Do not use gasoline or other volatile mixed solvents to wipe the unit.**
 - (Otherwise, the unit may rupture or short circuited, resulting in injury, fire or electric shock.)
- **Do not operating the unit while smoking pesticide is used.**
 - (Otherwise, the pesticide may accumulate in the unit and then released from the outlet, endangering health.)
 - After using pesticide, the room should be ventilated thoroughly, before the unit can be operated.
- **Do not block the air inlet or outlet by placing clothes, books or other obstacles.**
 - (Otherwise, blocking the air outlet may lead to smoke and fire.)
- **Do not sit, stand or lean on this product.**
 - (Otherwise, the unit may be overturned, resulting in injury or unit damage.)
 - If children is around, please supervised carefully.
- **Do not approach the unit with ignited cigarettes, incense and others.**
 - (Otherwise, flammables may be sucked into the unit and cause fire.)
- **Do not spray flammable materials such as insecticides or air fresheners around this product.**



PRECAUTION

Setting & Operation Requirement



- Please pull out the power plug at the hand plug position. (Otherwise, the power line may be damaged, resulting in fire or electric shock.)



- It is prohibited to disassemble battery.

There are protection mechanisms and protection circuits inside the battery to protect the user. Any improper dismantling will damage the protection mechanisms and possibly cause the battery to get heated, generate smoke and fire.

- It is prohibited to heat or burn the battery.

This may cause the melting of the battery insulator with the loss of its safety function and burn the electrolyte within. High temperatures might cause the battery to overheat, distort the case and lead to smoke and possibly fire.

- It is prohibited to wet the unit.

The unit is installed with an internal battery. Wetting the unit or placing it into water may cause the loss of functionality of the battery protective circuits. This could lead to an abnormal chemical reaction leading to possible heating of the battery, giving off smoke and start a fire.

- Please avoid charging or operating the unit near a source of fire or under direct strong sunlight.

Do not charge or operate the unit near the source of a fire or oven, or in an environment of excessive high temperatures. Overheating could ensue causing functionality loss, short circuit of the battery together with an abnormal chemical reaction. This could overheat the battery leading to smoke and possibly fire.



LITHIUM BATTERY SAFETY PRECAUTION

- If one observes an undesirable odour from the installed battery, or from other areas within the unit on first-time operation, please do not operate and return to the distributor.
- Please keep the unit away from an environment involving a heat source, a high barometric pressure or an increasing pressure on the surface of unit during its operation. Place the unit in a secure and safe operating location and away from children.
- Avoid the unit being shaken in a serious vibrating environment.
- Please avoid storing or operating the unit in a strong sunlight and hot environment. This will prevent the battery from overheating, becoming distorted, smoking or shortening its life.
- Please avoid operating the unit in an environment which might conduct static electricity and induce the battery to overheat, distort, generate smoke or shorten its life.
- Please only charge the battery with the dedicated charger and follow the recommended charging method.
- Insert battery in correct polarities. It is prohibited to arbitrarily disassemble or re-fit unit and battery. For safety concern, do not place unit at a wet location.
- To keep the battery at half-charged condition without any damage and place in the unit a cool dry location when stored for a long period of time.
- Do not put unit into fire or water.



NCCO Technology

Basic Information

Patented NCCO Air Purification Technology Brings Fresh and Clean Air

Patented NCCO (Nano Confined Catalytic Oxidation) Air Purification Technology is invented by Member of HKUST Entrepreneurship Program, and has obtained global patents. Our technology can solve indoor air quality problems in an all-round way, create a home / office environment with fresh air, and protect you and your family's health.



NCCO Technology's Characteristics

- ◆ Patented NCCO Technology continuously removes bacteria and viruses efficiently.
- ◆ Patented NCCO Technology effectively decomposes carcinogens in the air, such as formaldehyde.
- ◆ Hazardous pollutants will be decomposed into harmless water molecule and carbon dioxide, and will not accumulate in the filter, effectively avoiding re-release into the air due to saturation, and will not cause secondary pollution.
- ◆ Under normal maintenance conditions, NCCO Reactor can be used for a long time. Since there is no need to replace NCCO Reactor frequently, the operating cost is much lower than similar products on the market.
- ◆ Effectively remove offensive odour.
- ◆ Patented NCCO Technology has been widely used in different industries, such as schools, hospitals, nursing centers and public toilets.

About Intelligent Power-Off Protection System

b-MOLA NCCO Air Treatment Unit is designed using an Intelligent Power-Off Protection System. The unit will intelligently power off after continuous use over a period of 8 hours and then will restart automatically after 30 minutes downtime once connected to an external power supply. The unit will use the intelligent system to power-off after continuous use of 2 hours, and then will restart automatically after 10 minutes of downtime when using its internal (battery) power supply. Our intelligent power-off system is able to effectively avoid excessive load and eliminate any risk during the supply of power.

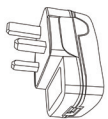
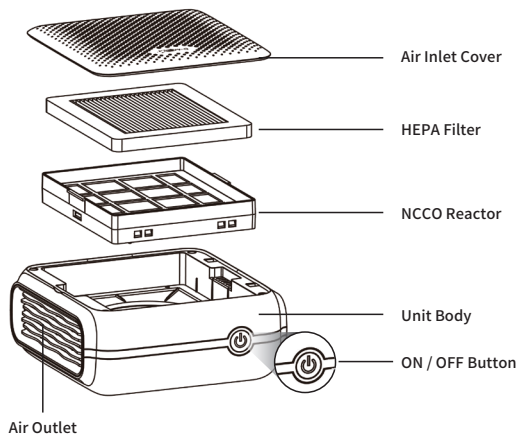
Placing Area Guideline

- **Indoors**
As dust falls on the floor, it is recommended to place the unit on a flat surface in the room.
- **Excellent Air Circulation**
Placing the unit on a dry, solid, level surface, and ensure the unit is provided with reasonable space of at least 15 cm from any objects, in order to operate effectively.
- **Do not put the unit in the following places:**
 - In the direct sunlight; blown by air conditioner; high temperature area. (Otherwise, it may cause deformation, aging, discoloration or reduction of service life.)
 - Distance over 1 meter to objects such as televisions and radios. (Otherwise, it may lead to image disorders and lost of sound.)
- **Do not place objects at air inlet and outlet.**
(Otherwise, it may affect the operating performance.)
- **Do not use the same power outlet with TV, radio and other equipment.**
(Otherwise, it may lead to image disorders and lost of sound.)
→ Please plug into other power outlets.
- **Do not place any items on top of the unit.**
(Otherwise, the unit may be malfunctioned.)

Main Parts & Components

Basic Information

Illustration Diagram:



Power Adapter



USB Type-C Power Cord



Ribbon (Optional)



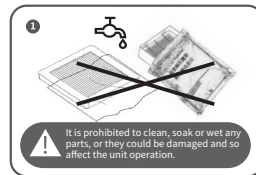
Silicon Rubber Case (Optional)

First-time Operation

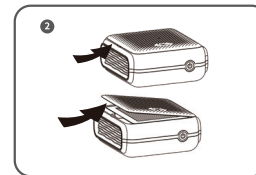
Getting Started

1. Remove all packaging materials, use a soft dry cloth to clean all the parts then re-assemble parts back together.
2. Placing the unit on a dry, solid, level surface, and ensure the unit is provided with reasonable space of at least 15 cm from any objects, in order to operate effectively.
3. Check power sockets and any extension cords to confirm compliance with unit requirements. Ensure that the unit is plugged in before usage.
4. The unit is installed a sensor, if filters have not been properly installed, the unit wouldn't operate.
5. When the unit is turned on for the first time, warm air and mineral smell may be released from the air outlet. This is normal as catalytic oxidation is taking place inside the NCCO Reactor, and completely harmless to human body.

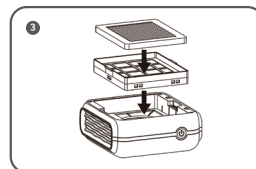
Installation Procedures:



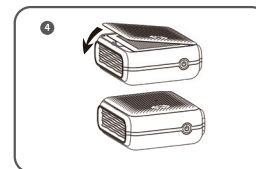
Take out HEPA Filter and NCCO Reactor from protective packaging material.



Slightly push the concave upward to open Air Inlet Cover.

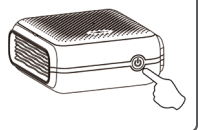


First, put HEPA Filter into NCCO Reactor Frame. Then, install the filter set into unit body.



Close the Air Inlet Cover, connect the unit with power supply then press the ON / OFF Button to turn on unit.

Operation Method:



◎ ON / OFF Button

After connecting unit with power supply, press ON / OFF Button to switch on unit. The white light indicates the unit operates with Silent Mode.

Press ON / OFF Button again, the unit operates with High Flow Mode indicated by blue light.

Press ON / OFF Button for the third time to switch off unit.

The unit is designed with memory function to memorize the last operation mode before switching off.



◎ LED Indicator

When the power ON/OFF indicator flashes in different colours, they indicate following situations:

	Fan Speed	Slow Flash	Fast Flash
Blue Indicator	Highest	Running & Charging	Low Power
White Indicator	Lowest	Running & Charging	Low Power

■ When the indicator flashes white and then blue alternately, it indicates that the unit is off and is charging.

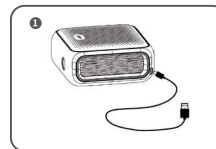


◎ Memory Function

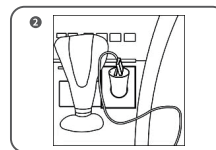
When the external power supply is stopped or interrupted unexpectedly, the unit will automatically transfer to its internal battery power supply. When the battery is exhausted and the unit stops running, it will memorise the operation mode and will return to the previous mode when external power is reconnected to it.

In-Car Installation (No car charger will be provided.):

A. Put the unit on a flat surface



First, insert the Type-C connector of the power cord into the Type-C jack at the bottom of the unit.



Insert the other end of the power cord into the plug of the car charger, and then insert into the charger socket.

It is not recommended put the unit on the car dashboard, where the surrounding higher temperature may damage the built-in battery.

ATTENTION

■ If the filter set should not be installed into the unit, a 'DiDiDi' alarm sound will be heard from the unit. Please ensure that the filter set is properly installed prior to switching the unit on.

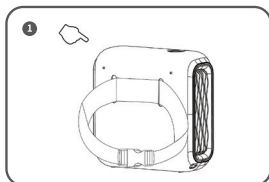
■ When first switched on there will be a slight mineral smell. This is perfectly normal and is due to special manufacturing technique of the NCCO Reactor. The smell is harmless and will disappear after a period of time operating the unit.

■ Please check and ensure that the car power supply is correct. The power input of this unit is DC5V 2A.

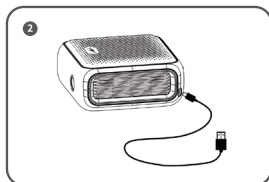
■ Prior to installing and operating the unit in car, please make sure that the power supply has been disconnected and lift it up carefully.

Operating Instructions

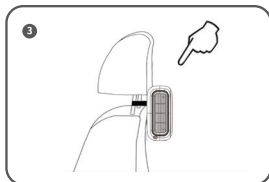
B. Hang at the back of car pillow:



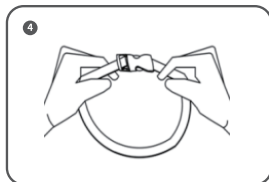
First, properly place the unit into Silicon Rubber Case. Then, unbuckle the ribbon and put it into case.



Insert the Type-C connector of the power cord into the Type-C jack at the bottom of the unit.



Tightly hang the unit with ribbon at the back of car pillow and ensure unit away from swinging.



Getting Started

Cleaning Instructions

Care & Maintenance



Always disconnect the power supply of the unit before any maintenance or care process is carried out (except replacing filters). (Otherwise the unit might still be running and could cause an electrical shock or injury)



WARNING

ATTENTION

- Please follow the instructions to clean the unit with detergent cloth.
- During maintenance, do not touch the disassembled parts. (Otherwise could cause stumble or parts damaged.)
- Do not operate the unit if Filters have not been installed, since this could cause irreversible damage to the unit.
- If the HEPA Filter is not replaced periodically as indicated in instructions, it may seriously affect the efficiency of the NCCO Reactor.

Cleaning Instructions

Cleaning External Surfaces of Unit Body

Please remove Air Inlet Cover before washing it with water (only Air Inlet Cover can be washed with water). The main body of the unit can be wiped with a soft dry cloth but avoid dust falling on the unit.

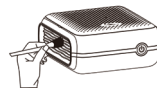
1



ATTENTION

- After washing the air inlet cover, please ensure that it is completely dry before replacing onto the main unit.
- Tips: A damp (non-abrasive) cloth can be used to clean the unit surface.

2



Cleaning Air Inlet and Air Outlet

Use a soft brush or light vacuum to clean the air inlet and air outlet.

ATTENTION

WARNING:

Never rinse or soak HEPA Filter or NCCO Reactor with water. When the unit has not been used for a long period of time:

- ① Stop operating unit and pull power plug from power source.
- ② Carry out any maintenance or care work.
- ③ Place the unit in a plastic or box carton, and store in a cool dry place.

Filter Replacement & Maintenance

Care & Maintenance

1. Filter lifetime will vary depends on environment, amount of usage and location of the unit.
2. To maintain optimal operating condition of the unit, only use the recommended filter.
3. Turn off unit but maintain power supply when replacing filters.
4. Please follow HEPA Filter Surface Color Changing Indicator to dispose HEPA Filter.

Recommended Filter Cleaning and Replacement Cycles and Methods

Filters	Cycle	Method
HEPA Filter	Every 6 - 12 Months *	Replacement
NCCO Reactor	Substantial**	Substantial

* The filters cleaning and replacement cycle may vary depending on the operating area.

** If the HEPA Filter has not been replaced periodically, or it has been damaged, the surface of the NCCO Reactor is covered with dust or oily substances after disassembling, the removal capacity of the NCCO Reactor may be badly reduced and should be replaced.

HEPA FILTER SURFACE COLOR CHANGING INDICATOR

No replacement needed	Replacement is recommended	Replacement is needed
-----------------------	----------------------------	-----------------------

FAQs

Other Information

Q1

Unit is making 'DiDiDi' sound and not operating.

A

Please check if filters have been properly installed. If not, please re-install them.

Q2

Can HEPA Filter be washed with water?

A

HEPA Filter is made of composite material, water would seriously affect the purification effect.

Q3

The air quality has not improved even after the unit has been turned on for a long time.

A

If the unit is used in a severely polluted area, the treatment process will take longer. It is recommended to use the HIGH FLOW MODE or extend the operational time until the pollution diminishes.

Q4

The unit emits an unusual smell or smog. (e.g. smoke, flame, or burning)

A

Turn off the unit and disconnect it from power supply right away. Call the customer service center immediately or contact with a qualified service provider.

Trouble Shooting

Other Information

Problems	Solutions
The unit does not operate.	Check if the unit is correctly connected to its power supply. Turn on the unit.
Unit is making 'DiDiDi' sound and not operating.	Check if the filters have been correctly installed. Re-install all filters.
No air is blowing through air outlet.	Check if the unit is correctly connected to its power supply. Check if the power cord interface is in good service condition.
The air quality is not yet improved after a long time operation.	If the unit is used in a seriously polluted area, the treatment process would take longer than normal. It is recommended to operate the unit with high airflow mode until the pollution diminishes.
	The Filter may require cleaning and replacement.
The airflow from air outlet becomes slow.	Filter may be blocked. Replace the filter. (For the method to install filters, please refer to Page 7.)
	Make sure all packaging materials are removed.
The unit makes an abnormal noise.	Make sure all packaging materials are removed.
	Make sure the air inlet and outlet are not blocked by external objects. Remove all adjacent objects that block the air inlet and outlet.
	The unit may malfunction. Call the customer service center for advice or consult with a qualified service provider.
The unit emits an unusual smell or smog. (e.g. smoke, flame, or burning)	Turn off the unit and disconnect it from power supply. Call the customer service center immediately or contact with a qualified service provider.

Product Specification

Other Information

Power Supply		DC5V 2A
Power Consumption (W)	Mode	Lowest
		Highest
Airflow Volume (m ³ /hr)	Mode	Lowest
		Highest
Noise Level (dB)	Sound Pressure Level	40 dB-43 dB
	Sound Power Level	44 dB-47.3 dB
Product Dimension (L x W x H) (mm)	170 (L) x 170 (W) x 78 (H)	
Net Weight (kg)	0.88	
Treatment System	Active Oxygen Generator	Sterilization
	HEPA Filter	Remove dust, hair and airborne particles such as allergens and pollen, bacteria, viruses and fungus.
	NCCO Reactor	Remove odour and decompose harmful pollutants such as formaldehyde and VOCs.