

2020-2022 Ford Super Duty Front Bumper Valance Installation Instructions

Evans Motorsport Performance Valances are Made in the USA from 1/8" Aluminum

Tools Needed:

- 1/8" Drive Bit for Assembly
- 3/8" Socket or Wrench for Assembly
- Thread Locker (recommended but optional)
- 8mm Socket
- 18mm Socket

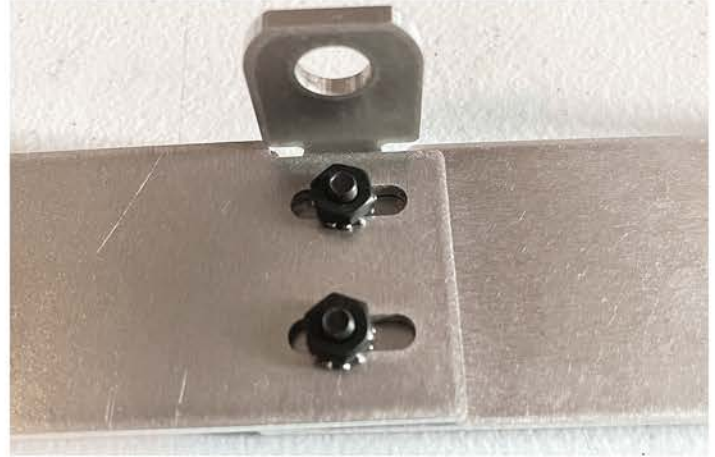
Assembly Hardware Provided:

- 4 - 10/32 1/2" Stainless Steel Black Screws
- 4 - #10 Stainless Steel Lock Washers
- 4 - 10/32 Stainless Steel Black Hex Nuts



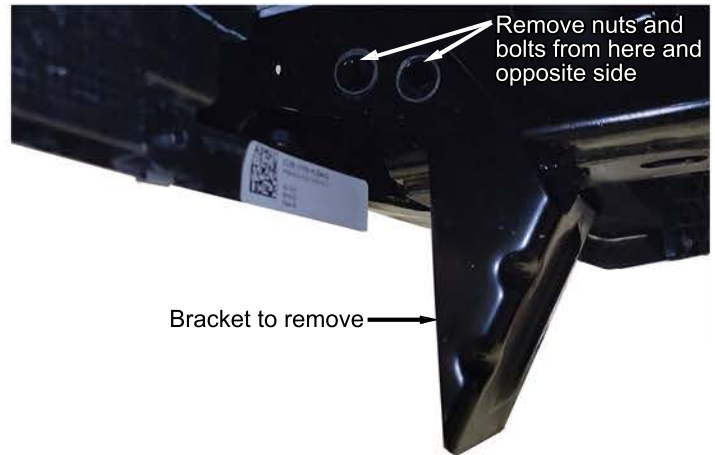
Perform installation at your own risk. We are not responsible for damage to vehicles or injury to persons during installation and/or use of the Super Duty Front Bumper Valance

1. Place vehicle in park with parking brake on. Double check everything and surroundings to be sure all is safe before starting installation.
2. Center section of valance will be positioned on top of side sections and holes aligned with slots. Insert screws into holes and through slots.
3. Place lock washers on screws, apply thread locker to screws (optional), then add nuts. Leave slightly loose to ensure fitment when installing. If using thread locker, install valance within the time allotted for drying by the thread locker manufacturer or add during step 7.



4. Remove stock valance bolts using 8mm socket. Remove bolt clips as well and slide those onto the corresponding holes in same orientation onto the new valance (bolt clips will be attached to original valance - use a small screwdriver to pry up on top of clip to slide off). Save bolts as they will be used to install new valance. Also, take notes or pictures of which bolts go where as some are installed from above and others from below.

5. Remove brackets shown in picture below from each side of truck using an 18mm socket. Bolts are locked in place together making it unnecessary to hold from inside bracket. Remove 4 nuts (2 per side) then push bolts in to remove from inside of frame then repeat for other side of truck. Save bracket and hardware for possible future use if original valance is reinstalled.



6. Hold new valance up under bumper and install middle section bolts first (use stock bolts removed from original valance - install back in the same place from where they were removed), ensuring valance is centered before tightening. Don't install outside mounting bolts on center section yet (tab holes shown in pictures for steps 2 and 3 - these will be last) so you can access the assembly bolts to tighten them once all other mounting bolts are in place.

7. Moving outward from center, install all mounting bolts in side sections of new valance leaving slightly loose so any adjustments can be made. Some slight bending of tabs may need to be done for optimal fitment. Once all side valance section mounting bolts are in, go back and fully tighten. Now tighten assembly bolts holding new valance pieces together, then install remaining 2 center section mounting bolts. Double check to ensure all nuts and bolts are tight and you're done.