

2018+ Mustang Front Air Splitter Installation Instructions

Evans Motorsport Performance Front Air Splitters are Made in USA From Aluminum and Powder Coated Matte Black
Visit www.EMP.parts and go to the 2018-2021 Mustang Front Air Splitter page to view installation video.

Tools Needed:s

Power Drill and/or Screwdriver, Phillips Bit,
1/8" Hex Bit, 3/8" and 7mm Sockets and
Wrench, Thread Locker (recommended),
Vehicle Jack, Jack Stands and Wheel Chock

Assembly Hardware Provided:

8 - 1/2" 10/32 Black Stainless Steel Bolts
2 - 3/4" 10/32 Black Stainless Steel Bolts
10 - 10/32 Black Stainless Steel Nuts
10 - Black Stainless Steel Lock Washers

Installation Hardware Provided:

25 - 10/32 Black Stainless Steel Screws
25 - Stainless Steel Lock Washers
4 - Stainless Steel Black Angle Braces

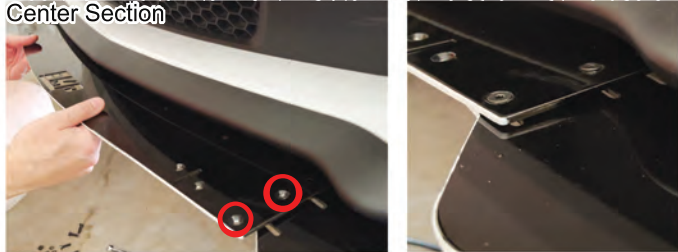
Perform installation at your own risk. We are not responsible for damage to vehicles or injury to persons during installation and/or use of the Front Air Splitter

1. Place vehicle on a flat surface in park with parking brake on, place chocks around tires and double check everything and surroundings to be sure all is safe before jacking front of vehicle up and starting installation.

2. Remove 4 Existing Screws From Underside Of Stock Air Splitter. Repeat for Other Side. These Screws Will be Used in the Next Step.



4. Place Center Air Splitter Section on Top of Side Sections and Insert 1/2" Bolts into Front 2 Outermost Holes on Both Sides of Center Section



6. With Hardware Still Loose, Adjust Side and Center Sections to Your Desired Fit



8. Make Sure Splitter Side Section is Straight with Stock Splitter and Still in Desired Location. Tighten Remaining Existing Screws. Repeat for Other Side.



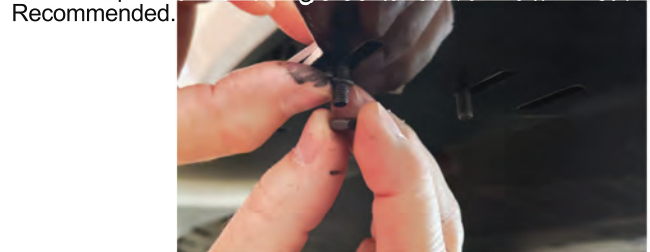
10. Install 21 Pointed Screws with Silver Lock Washers into Small Holes in Air Splitter Sections. If Using Power Tool, Don't Fully Tighten. Go Back and Hand Tighten to Avoid Over Tightening and Stripping Out Plastic.



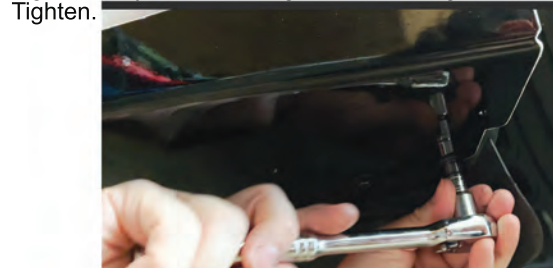
3. Insert 4 Existing Screws into Large Holes in Side Section of Air Splitter with Winglet and Reinstall into Holes. Leave Loose. Repeat for Other Side



5. Place Black Lock Washer Onto Bolt Then Screw Nut On and Leave Loose. Repeat for Remaining 3 Center Section Bolts. Thread Locker Highly Recommended.



7. Once Side and Center Splitter Sections Are in the Desired Position, Tighten Only Rear Existing Screw Holding Side Sections. Do Not Over Tighten.



9. Make Sure Center Section is Centered with Vehicle. Tighten Front Bolts on Both Sides of Center Section First Then Remaining 2 Bolts.



11. Fit Support Bracket into Slot on Center Section then Slide Support Bracket Retainer into Slot on Support Bracket.



2018+ Mustang Front Air Splitter Installation Instructions

12. Insert Two 1/2" Bolts To Secure Support Bracket to Air Splitter. Thread Locker Recommended



13. Place Black Lock Washers onto Bolts then Nuts and Hand Tighten



14. Fully Tighten Nuts and Bolts. Repeat for Other Side.



15. Using a 3/4" Bolt, Black Lock Washer and Nut, Attach Two Angle Brackets to Top Hole of Support Bracket and Hand Tighten



16. Ensure Support Bracket is Straight then Attach to Underside of Bumper with 2 Pointed Screws and Silver Lock Washers. Press Up Hard on Screw to Penetrate Plastic and Get it Started then Fully Tighten.



17. Fully Tighten Support Bracket to Angle Brackets. Repeat Support Bracket Steps for Other Side. Make Sure ALL Screws and Bolts are Tightened and You're Done.



DONE! Check out our other premium parts and continue raising the bar.

Perform installation at your own risk. We are not responsible for damage to parts or vehicles or injury to persons during installation and/or use of this Front Air Splitter. Automatic car wash not recommended. Always hand wash car after Front Air Splitter is installed. Periodically check all screws and bolts to ensure they remain tight and Front Air Splitter is solidly attached. Only tighten screws again if loose. Do not over tighten screws. Do not drive car with loose Front Air Splitter screws/bolts. EMP is not responsible for products beyond initial quality and condition due to conditions, installation quality and other factors beyond our control.