



Luxury Home Textiles

Trafalgar Sheers

www.vayahome.com
sales@vayahome.com

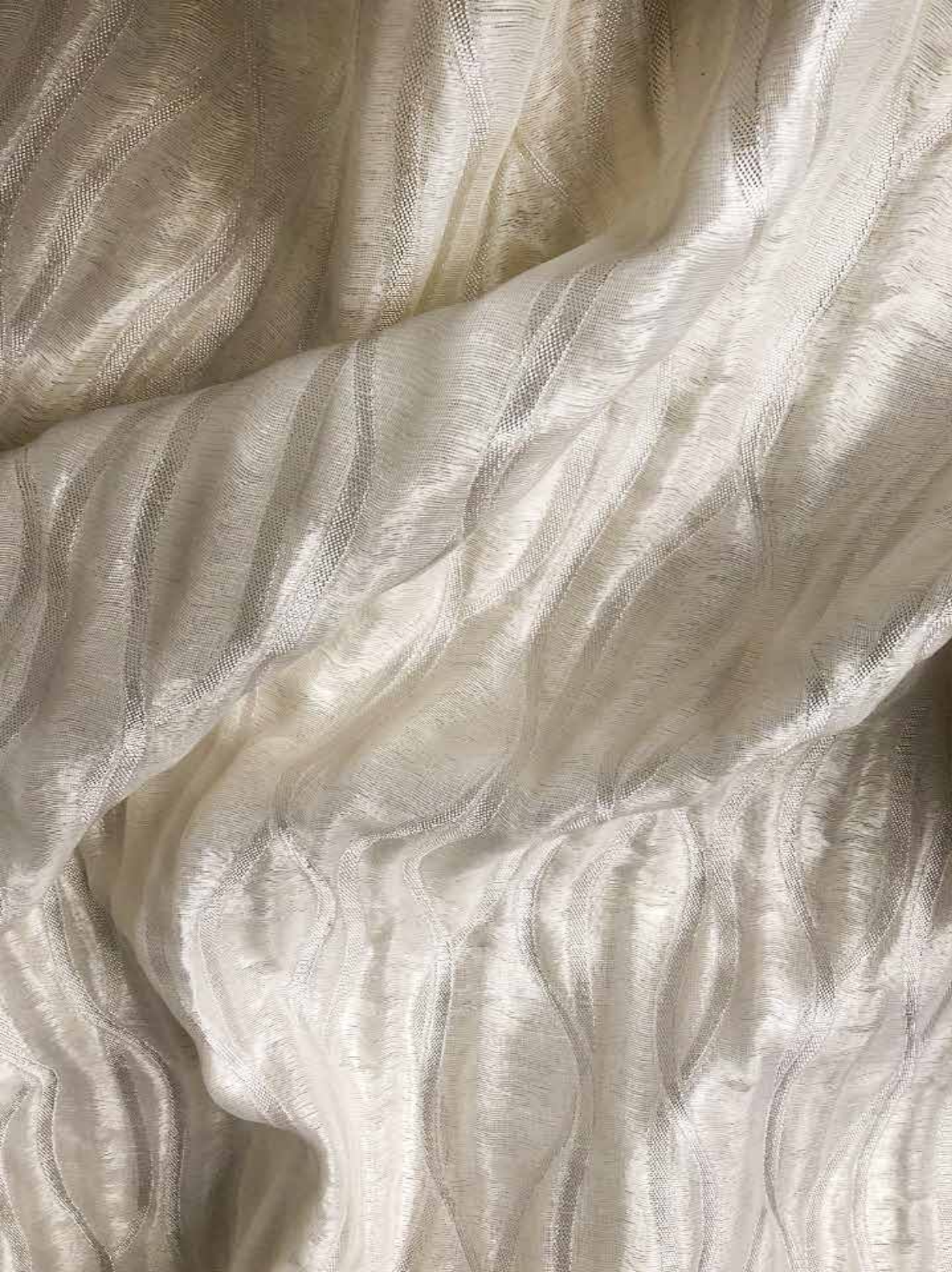




Essential for functionality and a complete home aesthetic, sheer fabrics are a vital element of drapery. The Trafalgar Sheers collection covers sheers for every room, sensibility, and purpose. A comprehensive compilation that spans techniques and effects, this collection has sheers in contemporary, classic, modern, rustic, and traditional styles.



Above — Waterloo **Right** — Fabrics on sofa Apex Voile, Birmingham



Above — Hampton **Top right** — Forest Hill **Bottom right** — Laguna



Above — Oakland **Right** — Belmond, Birmingham, Eclipse Voile, Alpine, Apex Voile



Above — Waterloo Top left — Hastings Bottom left — Acton



Above — Oakley, **Top right** — Ducale Voile, **Bottom right** — Eclipse Voile



Above — Kenzington **Right** — Curtain Alpine



Above — Riverdale **Top left** — Woodland **Bottom left** — Scarsdale



Above — Curtain Dawson Right — Curtain Apex Voile

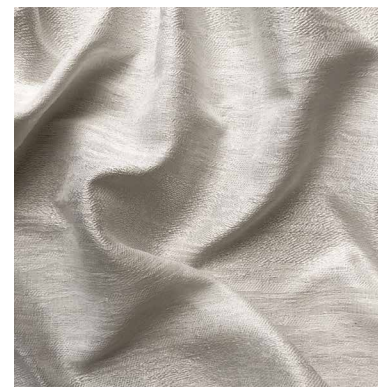


Apex Voile

Apex Voile

Faint peaks and parallel lines criss-cross Apex Voile, a semi-transparent sheer that is a complement to our Apex fabric from the Hemisphere collection.

Composition: 10% Cotton, 30% Polyester, 60% Viscose
End Use: Drapery

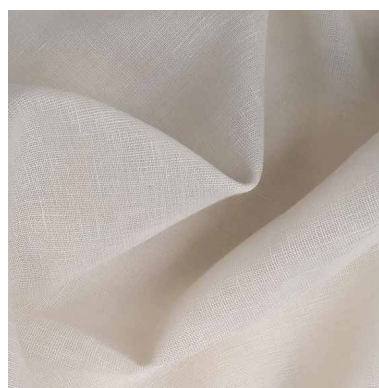


Abbey

Abbey

Abbey combines yarns of varying thickness and shine to give it a flowing texture.

Composition: 100% Polyester
End Use: Drapery



Aspen Chinchilla

Aspen Chinchilla

Available in 2 colours, Aspen is a light, textured sheer. A very subtle glimmer spreads across this fabric, giving it a refined, lustrous feel.

Composition: 40% Polyester, 60% Cotton
End Use: Drapery



Acton

Acton

Acton is a matte polyester sheer with a linen look.

Composition: 100% Polyester
End Use: Drapery



Aspen Mushroom

Aspen Mushroom

Available in 2 colours, Aspen is a light, textured sheer. A very subtle glimmer spreads across this fabric, giving it a refined, lustrous feel.

Composition: 40% Polyester, 60% Cotton
End Use: Drapery



Alpine

Alpine

Detailed and delicate floral designs nestle within the honeycomb pattern of Alpine.

Composition: 12% Cotton, 37% Viscose, 51% Polyester
End Use: Drapery



Brighton

Brighton

Brighton is a simple, stunning, and classic silk sheer, perfect as an added layer of glamour in any space.

Composition: 37% Polyester, 63% Silk
End Use: Drapery



Belgrave

Belgrave

Belgrave is a cotton-polyester blend with a simple pattern of checks and very gentle horizontal bands.

Composition: 45% Cotton, 55% Polyester
End Use: Drapery



Dawson

Dawson

A linen-polyester blend, Dawson has a netted-lace look and texture.

Composition: 30% Linen, 70% Polyester
End Use: Drapery



Belmond

Belmond

Belmond is a lightweight linen sheer with a faint glimmer and a classic feel.

Composition: 5% Polyester, 95% Linen
End Use: Drapery



Ducale Voile

Ducale Voile

Linen and cotton yarns have been carefully woven together with strong polyester to achieve a subtle sheer of an imposing damask pattern.

Composition: 18% Silk, 37% Polyester, 45% Viscose
End Use: Drapery



Birmingham

Birmingham

Double layers and raised vertical ripples make Birmingham a 3 dimensional effect, both tactile and visual.

Composition: 24% Linen, 67% Polyester, 9% Cotton
End Use: Drapery



Hampstead

Hampstead

A fabric truly tailored for light, Hampstead's metallic coral patterns subtly change when backlit, giving the motifs a raised effect.

Composition: 38% Viscose, 62% Polyester
End Use: Drapery



Eclipse Voile

Eclipse Voile

A complement to Eclipse from the Hemisphere collection, Eclipse voile's irregular strokes in flowing horizontal bands make for a light, intricate sheer pattern.

Composition: 32% Polyester, 68% Viscose
End Use: Drapery



Hampton

Hampton

Hampton's ruffles and furrows make it a sheer with a vintage look. Its double layer make it ideal for privacy and optimal light.

Composition: 20% Linen, 36% Viscose, 44% Polyester
End Use: Drapery



Edgware

Edgware

Edgware's subtle pattern is created through faint shifts in the fabric's warp and the strategic adjoining of its two layers.

Composition: 41% Polyester, 59% Viscose
End Use: Drapery



Hastings

Hastings

The distinct geometric pattern in Hastings, a cotton-polyester blend, give it a form and structure that works well alone as well as paired with other drapery.

Composition: 50% Cotton, 50% Polyester
End Use: Drapery



Forest Hill

Forest Hill

Forest Hill's large and light tulip motifs are made up of dozens of tiny patches, giving it a characteristic textured look.

Composition: 16% Cotton, 38% Viscose, 46% Polyester
End Use: Drapery



Oakley

Oakley

A mix of opaque and transparent, Oakley is a sheer with a woven brushstroke effect.

Composition: 28% Polyamide,
72% Polyester
End Use: Drapery



Kensington

Kensington

Kensington's two-toned floral motif uses different kinds of weaves in the same sheer to give it a multi-tiered look.

Composition: 36% Viscose, 64% Polyester
End Use: Drapery



Oxford

Oxford

An unbroken expanse in a cotton-polyester blend, Oxford is a classic semi-transparent sheer

Composition: 33% Cotton,
67% Polyester
End Use: Drapery



Laguna

Laguna

Alternating between opaque and transparent, the broad and even bands in Laguna give it a rich texture and contemporary look.

Composition: 100% Polyester
End Use: Drapery



Paddington

Paddington

Multi-textured with an irregular wave pattern, Paddington is a light mesh sheer ideal for areas with strong sunlight.

Composition: 100% Polyester
End Use: Drapery



Oakland

Oakland

Forest Hill's large and light tulip motifs are made up of dozens of tiny patches, giving it a characteristic textured look

Composition: 100% Polyester
End Use: Drapery



Waterloo

Waterloo

Waterloo's twisted yarn detailing give it a rustic look and feel.

Composition: 40% Linen, 60% Polyester
End Use: Drapery



Paloma

Paloma

Paloma has been created with a spaced warp that highlights each individual thread in the fabric.

Composition: 20% Linen, 80% Cotton
End Use: Drapery



Woodland

Woodland

Woodland is a 100% linen sheer that has been textured with a loose-applique technique.

Composition: 100% Linen
End Use: Drapery



Riverdale

Riverdale

Multi-coloured and multi-layered threads add depth and character to Riverdale.

Composition: 100% Polyester
End Use: Drapery



Scarsdale

Scarsdale

An exquisite sheer with an ethereal look, Scarsdale has a light but unmistakable shine that is revealed with lighting and movement.

Composition: 100% Polyester
End Use: Drapery



Luxury Home Textiles

VAYA Home designs, curates and produces textiles for drapery and upholstery in a variety of fibres and tactile techniques.

Leveraging decades of textile designing and production expertise, the Jaipuria Mill in collaboration with international creatives, conceived the VAYA Home brand to weave thoughtfully constructed fabrics for interior decorators globally.

Combining hand crafted arts with machine exacted techniques unique to the mill, the VAYA collections aim to delight and surprise through the use of pattern, materials, and colours in their textiles.

Our products are sold through leading retailers as cut length yardage and are suitable for residential and commercial application.

www.vayahome.com
sales@vayahome.com