



Luxury Home Textiles

Spectra VI

www.vayahome.com
sales@vayahome.com





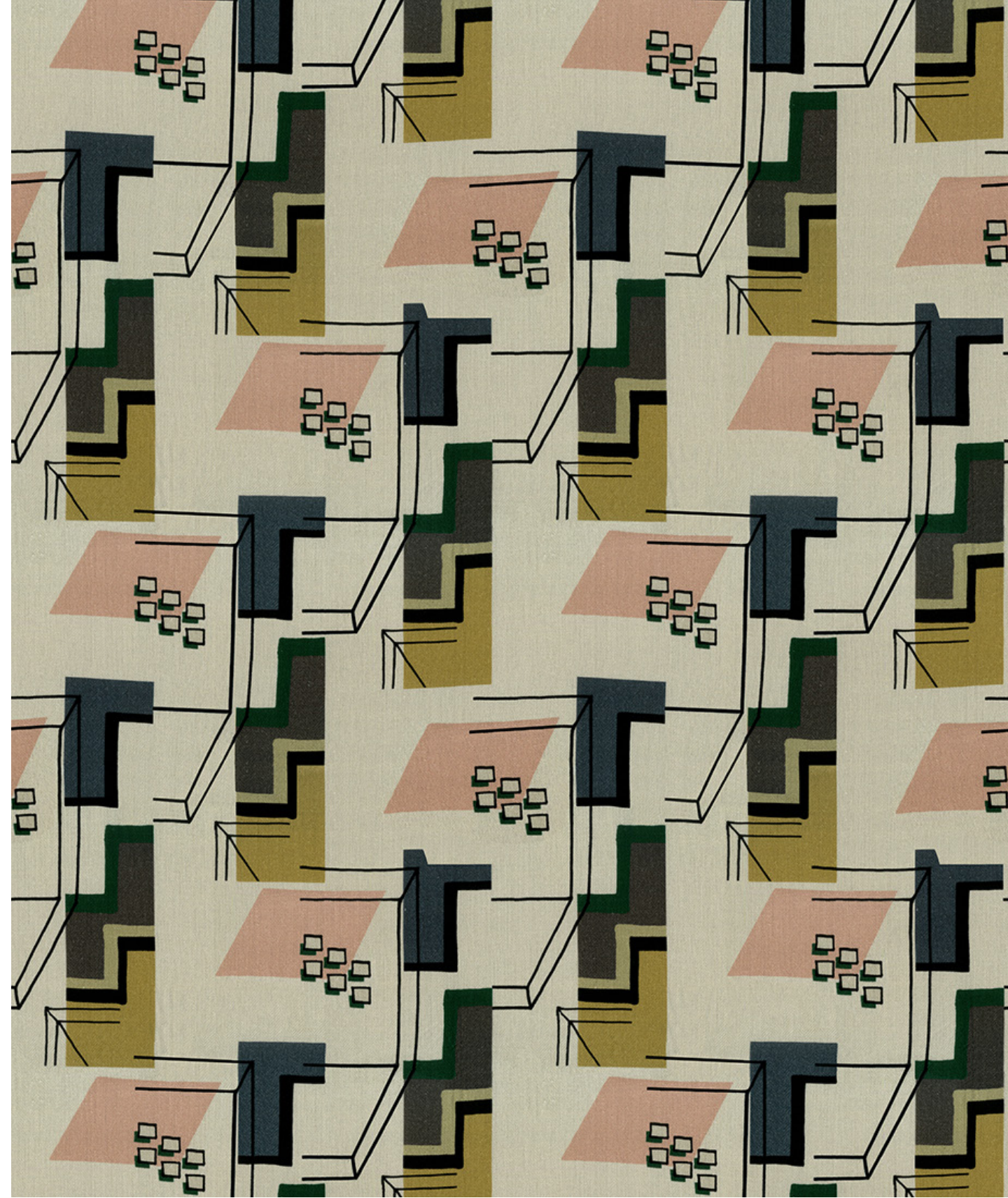
The Spectra VI collection is a smorgasbord of abstraction creating picturesque views limited only by imagination. Taking inspiration from various styles and places. Spectra VI taps into colour and geometry to captivate and enchant.



Front Curtain Salvador Bamboo **Back Curtain** Logan Beach Sand



Salvador Charcoal Grey



Salvador Oyster Grey



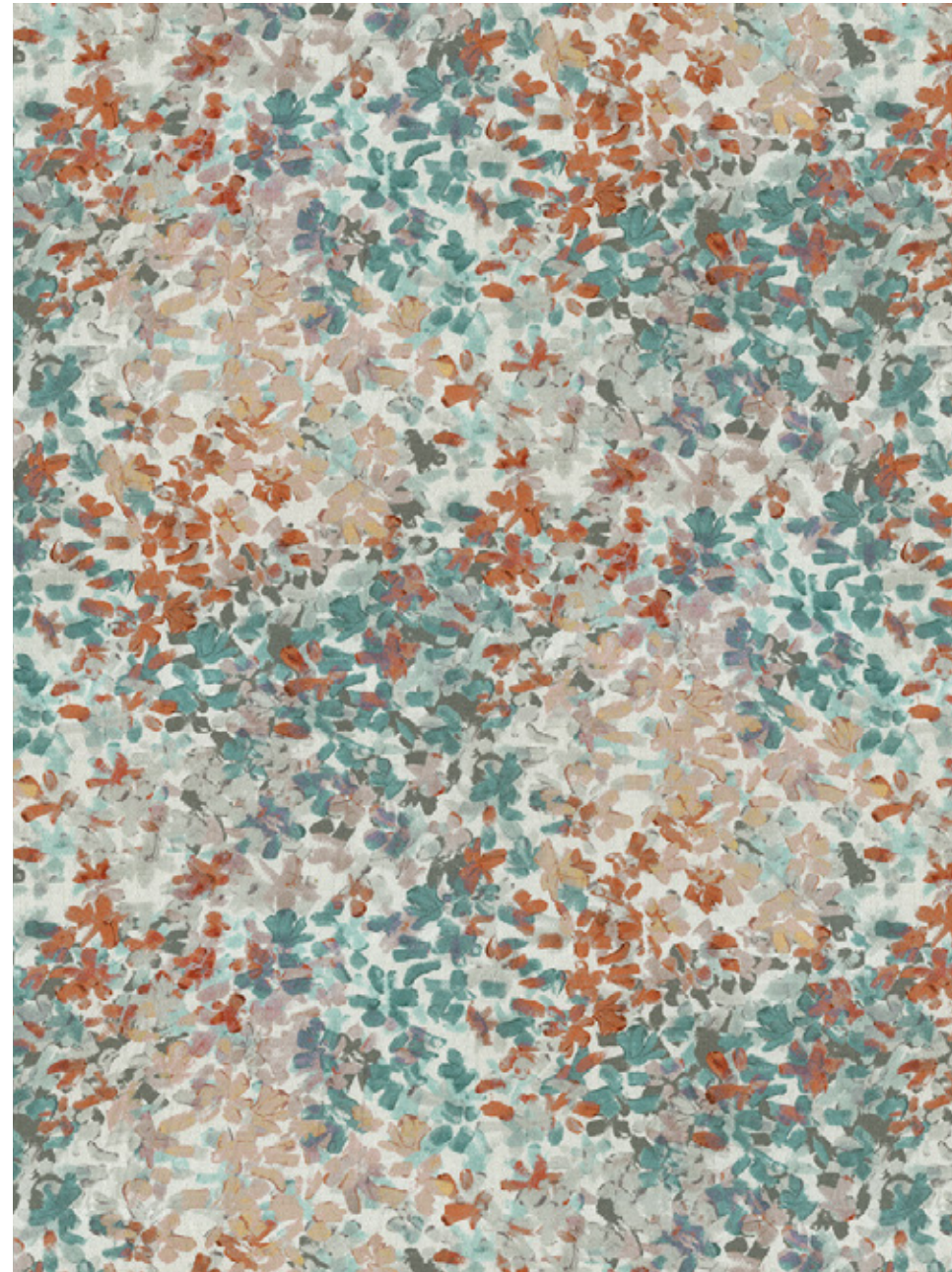
Above — Colorado Autumn Glaze
Left — **Cushions** Havana Pumice Stone, Colorado Winter Sky, Logan Stellar
Deevan Colorado Green Spruce



Colorado Glacier Grey



Colorado Green Spruce



Above — Medellin Green Lake
Left — **Curtain** Medellin Chestnut **Armchair** Rowan Sage Green



Medellin Apple Green



Medellin Celestial



Medellin Chestnut



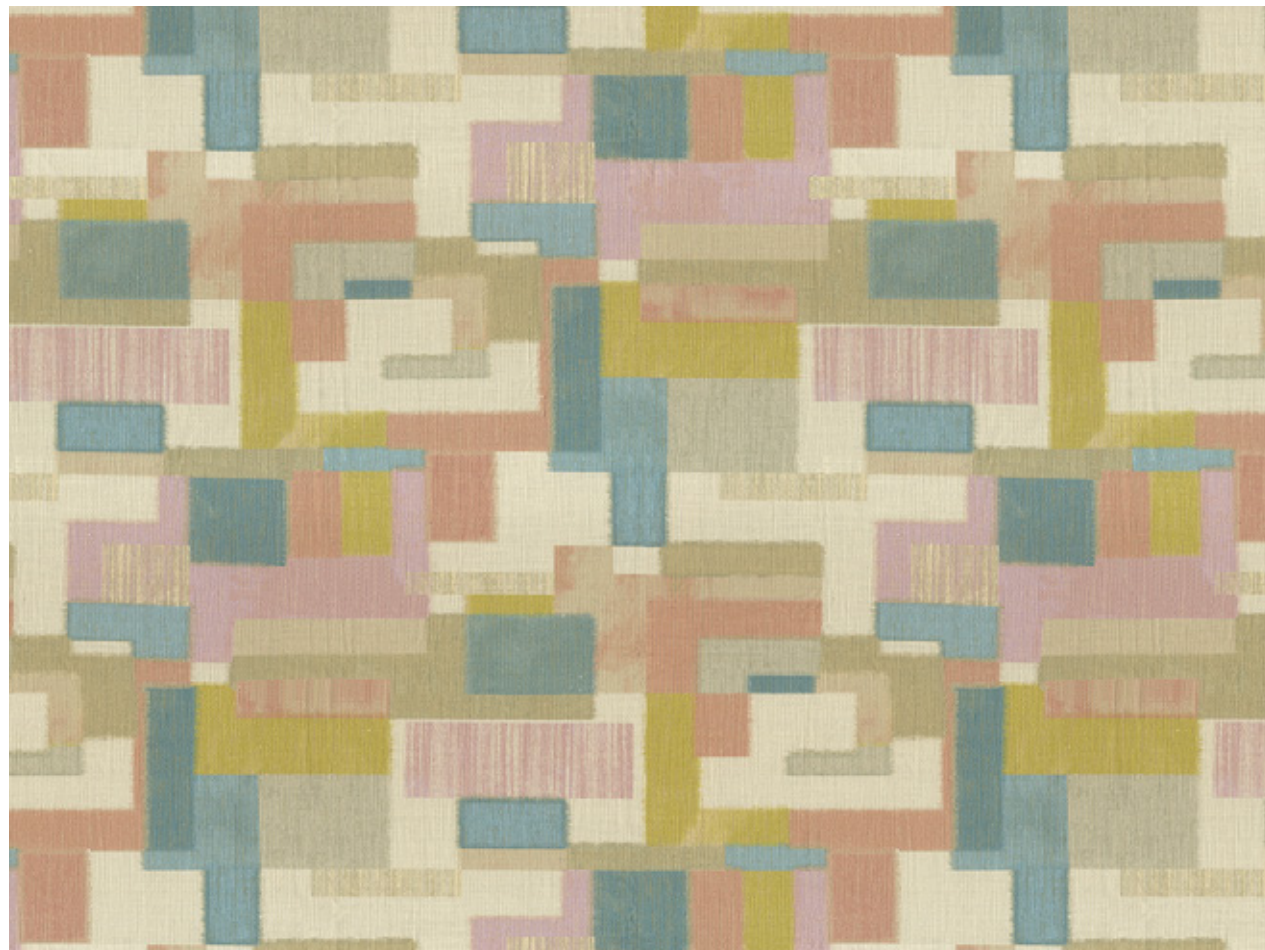
Medellin Black Iris



Headboard Rowan Sky Light, Minerva Lime Green **Cushions**
Chicago Stellar, Rowan Blue Mist, Rowan Sky Light **Curtain**
Havana Pumice Stone **Throw** Logan Foliage Green



Above — Top Rowan Lagoon **Bottom** Rowan Sage Green
Left — Rowan Blue Mist



Above — Curtain Havana Black Iris **Sofa Left** Chicago Tapioca **Sofa Right** Chicago Oak Buff
Left — Chicago Stellar, Chicago Pale Blush



Havana Black Iris



Havana Warm Sand



Havana Pumice Stone



Above — **Blind** Logan Stellar **Cushion** Colorado Winter Sky
Top Right — Logan Beach Sand **Bottom Right** — Logan Foliage Green



Chicago Oak Buff



Chicago Pale Blush



Chicago Stellar



Chicago Tapioca

Chicago

Bright and cheery, the patchwork rectangles of Chicago create the sense of a bird's-eye view of a vast city. The blocks interact with each other for a cohesive, well-tuned pattern that gives off a vibrant energy well suited to grace any space.

Composition: 100% Cotton
End Use: Upholstery, Cushions



Colorado Autumn Glaze



Colorado Glacier Grey



Colorado Green Spruce

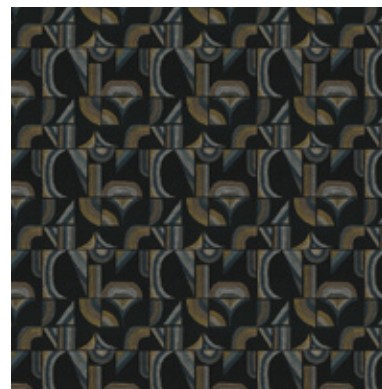


Colorado Winter Sky

Colorado

Mists and plains and great lakes, mountain peaks and grasslands - Colorado presents the view you want it to. Its earth tones and soft colours give it a soothing edge.

Composition: 100% Cotton
End Use: Multipurpose



Havana Black Iris



Havana Pumice Stone



Havana Warm Sand

Havana

Havana's neat lines, curves, and breaks make for a sleek and engaging pattern. Coming together in a peak in one moment and bending upon itself in the next, the abstractness of Havana is a pleasing, inviting, and smooth look.

Composition: 100% Cotton
End Use: Upholstery, Cushions



Logan Beach Sand



Logan Foliage Green



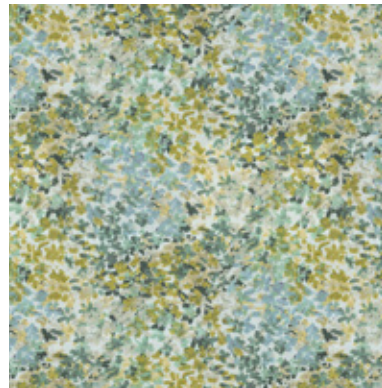
Logan Stellar

Logan

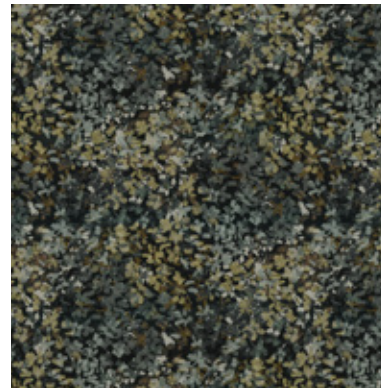
Fine lines create the undulating landscape of Logan, setting the scene of a vast panorama. Do you see mountains or dunes, peaks reaching for the sky? Or waves cresting and crashing in an endless sea.

Composition: 100% Cotton

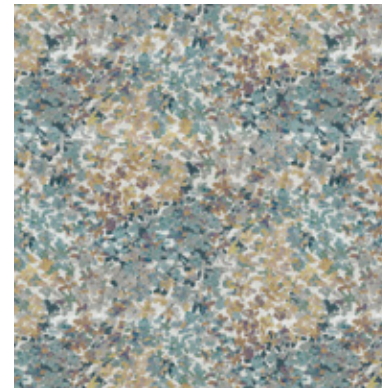
End Use: Multipurpose



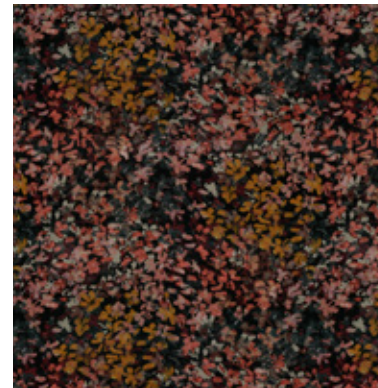
Medellin Apple Green



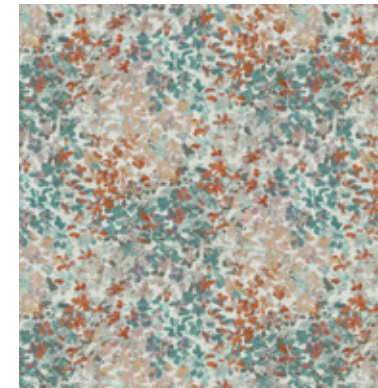
Medellin Black Iris



Medellin Celestial



Medellin Chestnut



Medellin Green Lake

Medellin

The meadows of Medellin set a peaceful tone, its colours coming together harmoniously in this all-over print. Engaging and inviting, Medellin is available in shades ranging from light to dark.

Composition: 64% Viscose, 13% Linen, 23% Cotton

End Use: Multipurpose



Rowan Blue Mist



Rowan Lagoon



Rowan Sage Green



Rowan Sky Light

Rowan

Exuberant and full of life, Rowan feels like the snapshot of a perfect moment. Bursts of colour create a vivid image in this print, tipping the mind towards thoughts of joy and celebration.

Composition: 100% Cotton

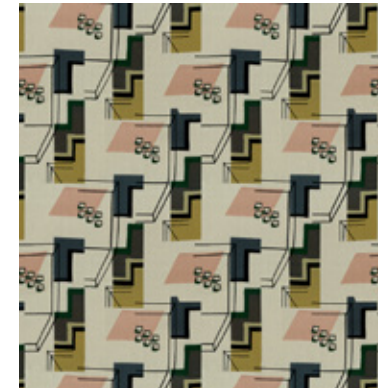
End Use: Multipurpose



Salvador Bamboo



Salvador Charcoal Grey



Salvador Oyster Grey

Salvador

Surreal, abstract, geometric - Salvador is a journey through 3 dimensions. Stairways and doorways, stepping stones levitating on and through a building; Salvador is a delight to explore and a pleasure to observe.

Composition: 64% Viscose, 14% Linen, 24% Cotton

End Use: Multipurpose



Luxury Home Textiles

VAYA Home designs, curates and produces textiles for drapery and upholstery in a variety of fibers and tactile techniques.

Leveraging decades of textile design and production expertise, the Jaipuria Mill in collaboration with international creatives, conceived the VAYA Home brand to weave thoughtfully constructed fabrics for interior decorators globally.

Combining hand crafted arts with machine exacted techniques unique to the mill, the VAYA collections aim to delight and surprise through the use of pattern, materials, and colors in their textiles.

Our products are sold through leading retailers as cut length yardage and are suitable for residential and commercial application.

www.vayahome.com
sales@vayahome.com