



Luxury Home Textiles

# Nomad

[www.vayahome.com](http://www.vayahome.com)  
[sales@vayahome.com](mailto:sales@vayahome.com)





A collection of gorgeously embroidered linens, Nomad's fabrics bring brightness and charm to a space. Detail and colour work in harmony on matte bases for a refined yet cheerful collection that sparks delight.



Above — Laurel Dusky Green  
Left — Top to Bottom Blaze Rose Cloud, Eira Mauve Wood, Laurel Dusky Green (Detail)



**Above** — Eira Wasabi **Top left** — Eira Mauve Wood  
**Bottom left** — Eira Moonlight Blue



**Curtain** Eira Wasabi

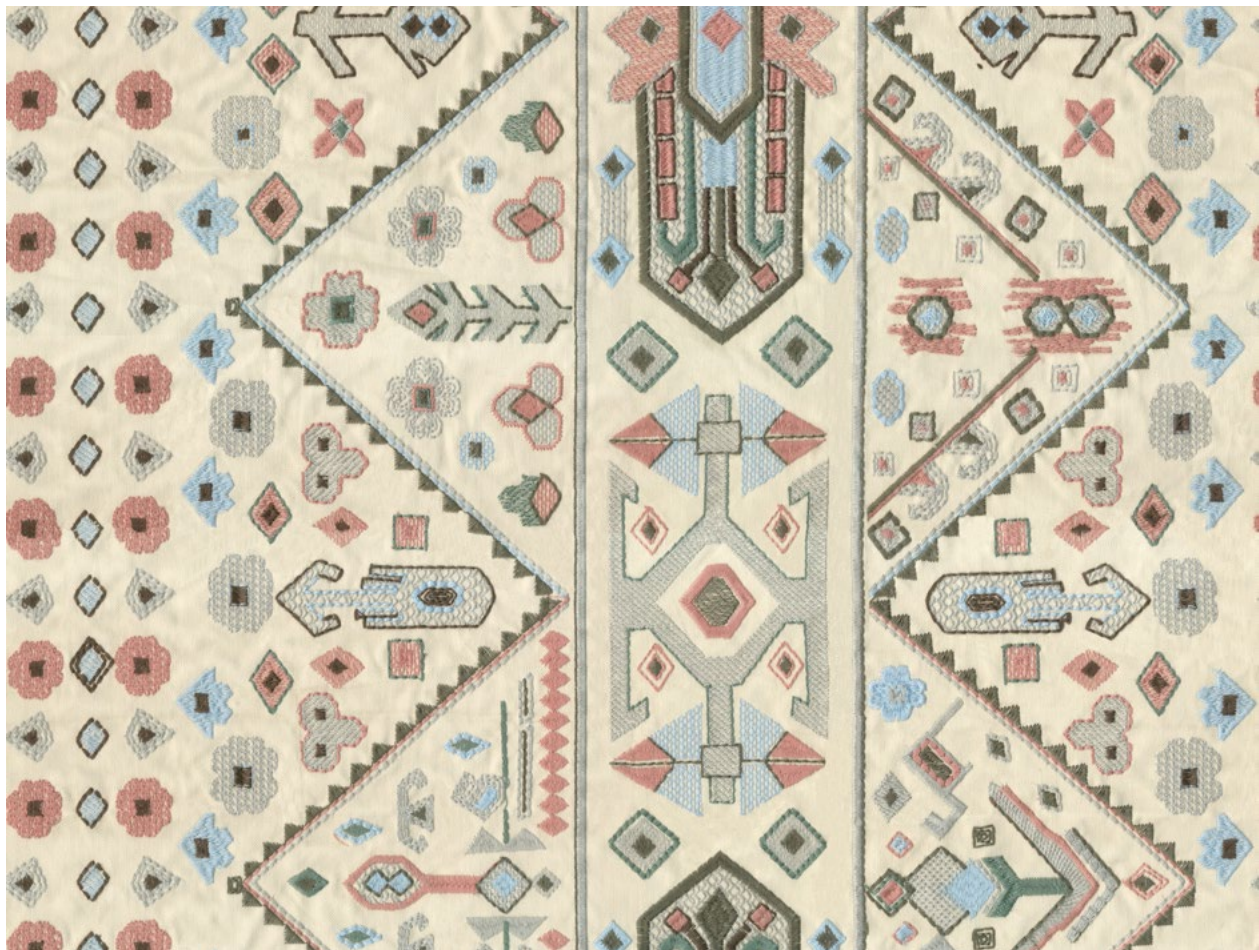


**Above** — Marina Deep Sea  
**Left** — Eira Wasabi, Marina Deep Sea (Detail)



**Above** — Laurel Mustard Gold  
**Right** — Marina Tannin





**Above** — Blaze Cardinal **Top left** — Blaze Frost Grey  
**Bottom left** — Blaze Rose Cloud





**Curtain** Blaze Cardinal



Top to Bottom — Eira Moonlight Blue, Blaze Frost Grey (Detail)



Top to Bottom — Penelope Lichen Green, Penelope Golden Yellow, Penelope Tango Red, Penelope Infinity (Detail)



**Above** — Laurel Autumn Glaze

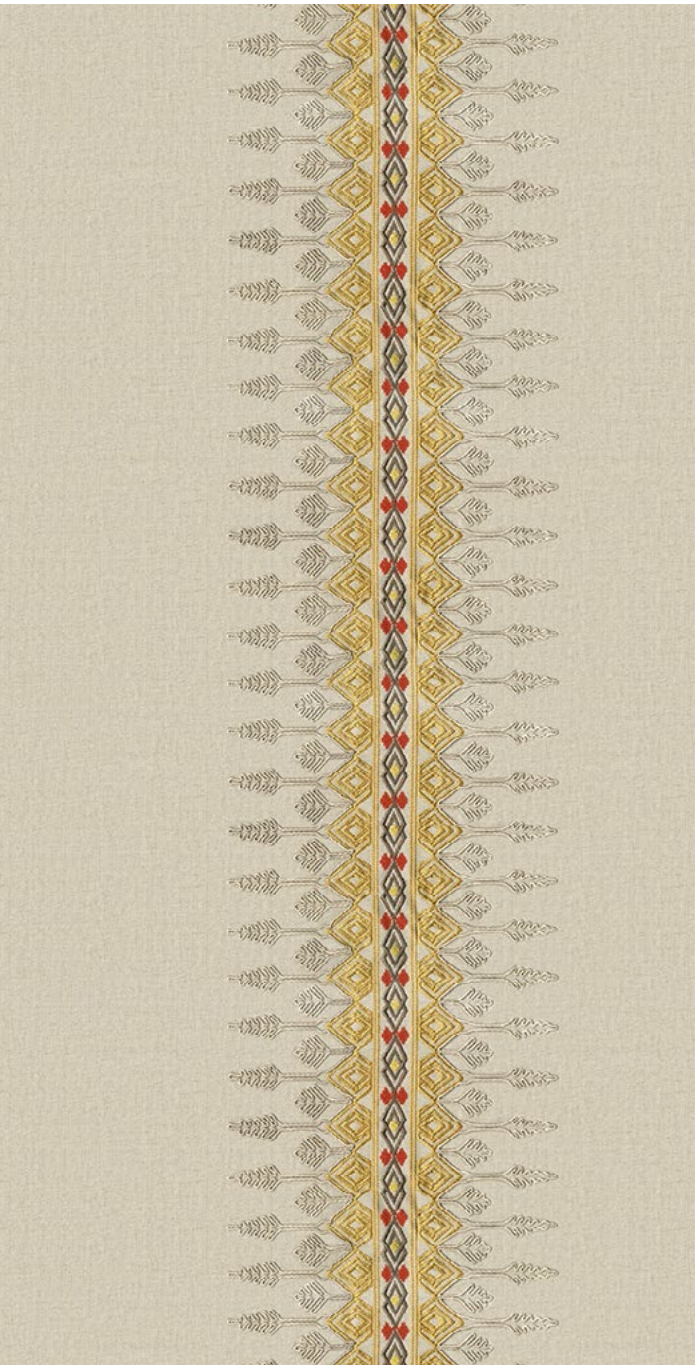


**Right — Top to Bottom** Laurel Mustard Gold, Laurel Autumn Glaze, Laurel Dusky Green

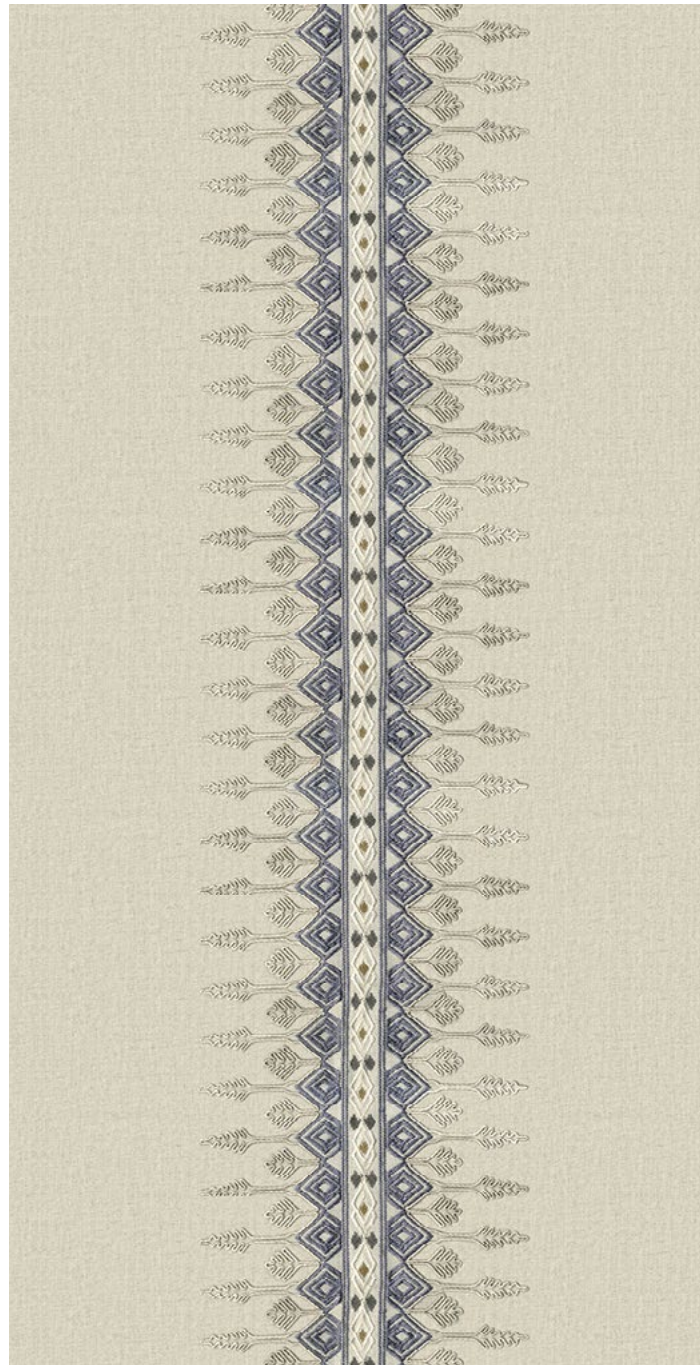


**Curtain** Laurel Dusky Green **Pouf** Marina Deep Sea  
**Pouf Cushions** Penelope Tango Red,  
Penelope Golden Yellow **Floor Cushion** Eira Wasabi

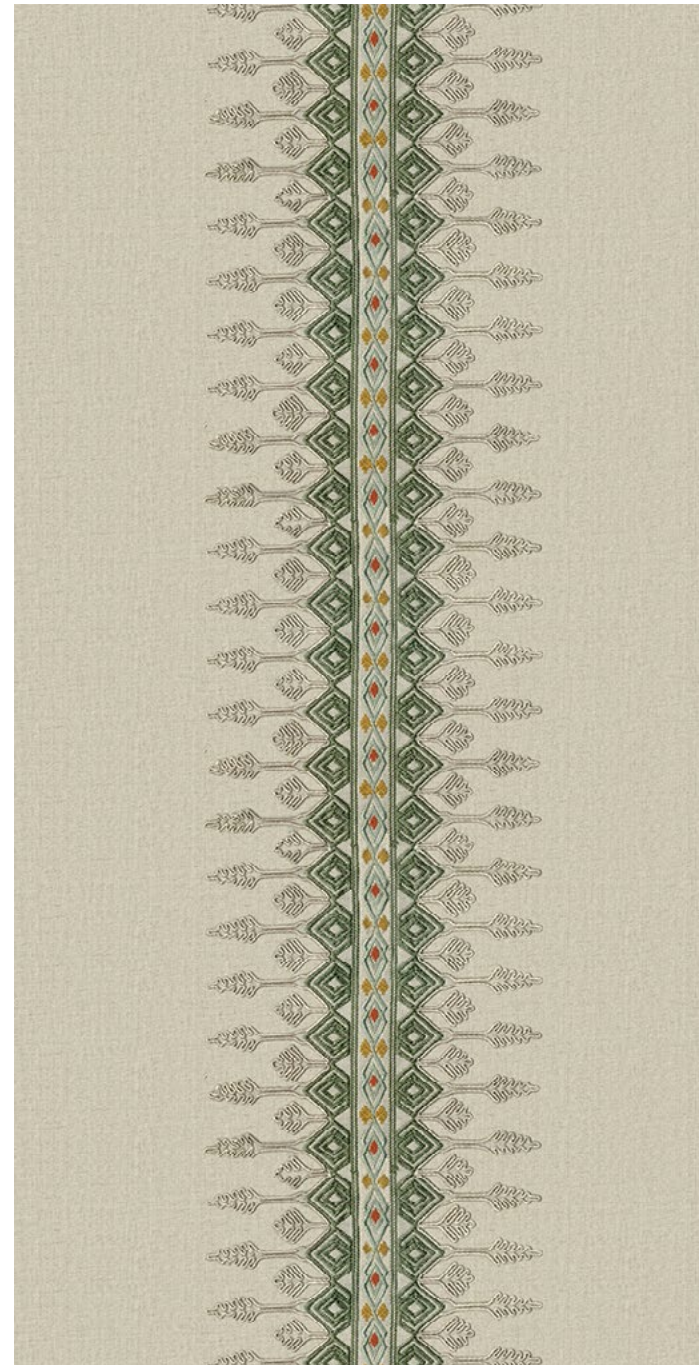




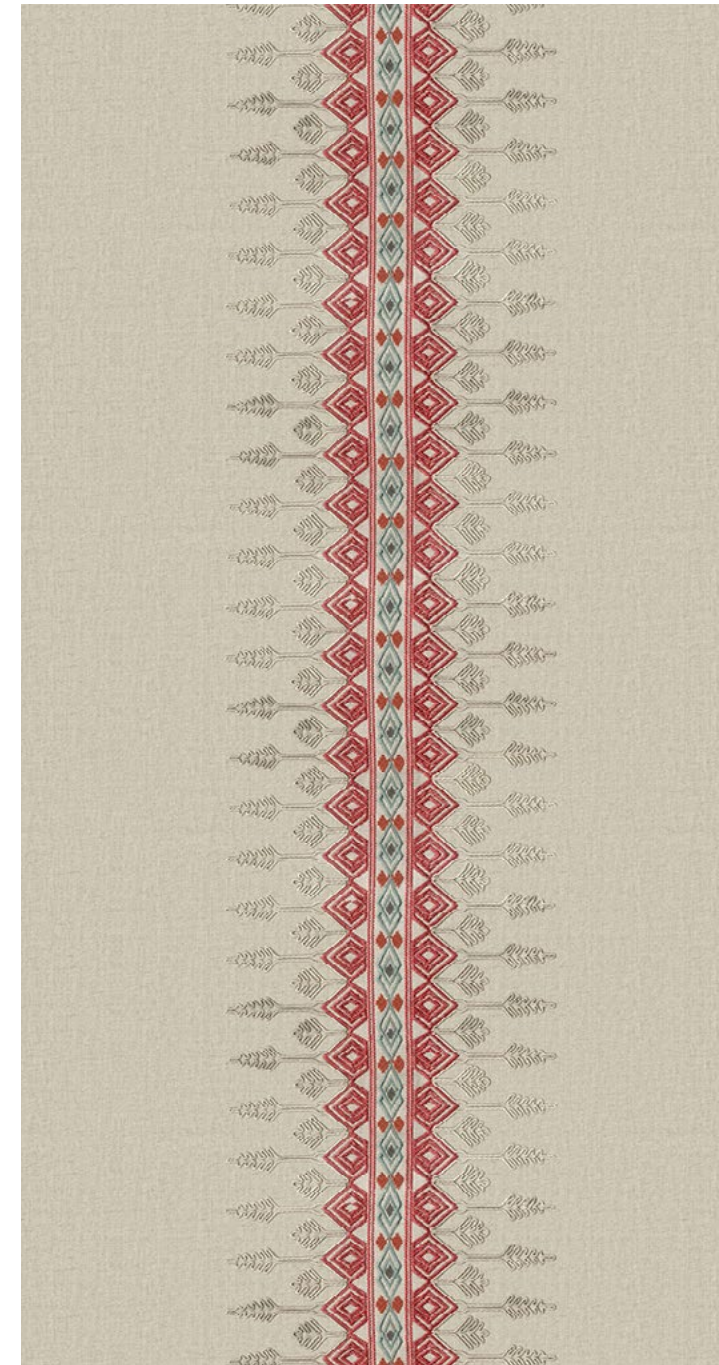
Penelope Golden Yellow



Penelope Infinity



Penelope Lichen Green



Penelope Tango Red



**Right & Left Blinds** Penelope Golden Yellow,  
**Center Blind** Penelope Lichen Green



Blaze Cardinal



Blaze Frost Grey



Blaze Rose Cloud

**Blaze**

Symmetry and asymmetry strike a balance in Blaze. Its playfully rendered motifs dot the fabric, their varying shapes and sizes coming together in an engaging landscape.

Composition: 36% Cotton, 30% Polyester, 17% Viscose, 17% Linen

End Use: Multipurpose



Eira Mauve Wood



Eira Moonlight Blue



Eira Wasabi

**Eira**

Eira's delicate embroidery gives its tree of life motifs a soft, feathered look. Their branches spreading elegantly across a gentle base have a sense of poise that adds a stylish touch to the fabric.

Composition: 65% Linen, 35% Viscose

End Use: Multipurpose



Laurel Autumn Glaze



Laurel Dusky Green



Laurel Mustard Gold

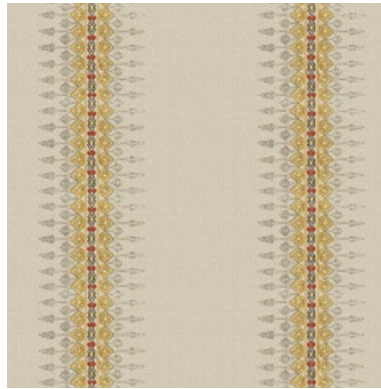
**Laurel**

Laurel's kaleidoscopic pattern creates the impression of a garden viewed from above. Intricate and varied stitches add to the complexity of its pattern, giving it an inviting feel.

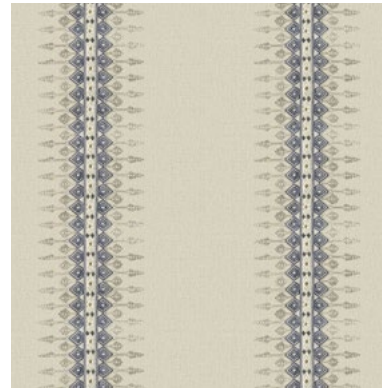
Composition: 45% Cotton, 55% Linen

End Use: Drapery, Cushions

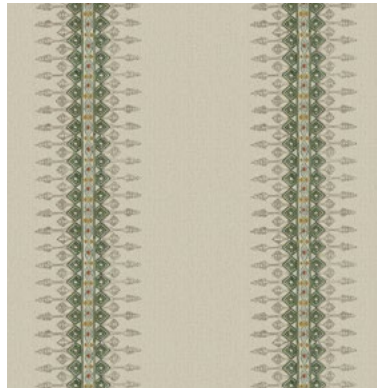




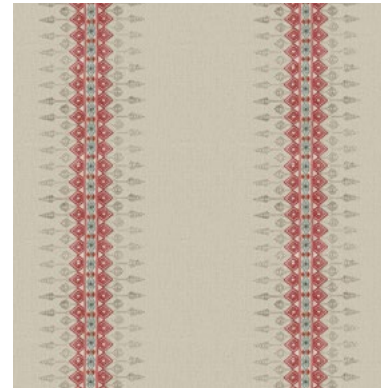
Penelope Golden Yellow



Penelope Infinity



Penelope Lichen Green



Penelope Tango Red

**Penelope**

Graceful cord embroidery runs alongside a lively column of colour in Penelope. Perfectly balanced in shade and form, Penelope adds the perfect pop to a space.

Composition: 45% Cotton, 55% Linen

End Use: Drapery, Cushions



Marina Deep Sea



Marina Drizzle



Marina Tannin

**Marina**

Colours shifting with the light and borders blurring into each other, Marina's design entrances as it unfurls across the fabric. Muted tones come alive with intricacy, giving it a sophisticated air.

Composition: 65% Linen, 35% Viscose

End Use: Multipurpose



Luxury Home Textiles

VAYA Home designs, curates and produces textiles for drapery and upholstery in a variety of fibers and tactile techniques.

Leveraging decades of textile design and production expertise, the Jaipuria Mill in collaboration with international creatives, conceived the VAYA Home brand to weave thoughtfully constructed fabrics for interior decorators globally.

Combining hand crafted arts with machine exacted techniques unique to the mill, the VAYA collections aim to delight and surprise through the use of pattern, materials, and colors in their textiles.

Our products are sold through leading retailers as cut length yardage and are suitable for residential and commercial application.

[www.vayahome.com](http://www.vayahome.com)  
[sales@vayahome.com](mailto:sales@vayahome.com)