



Luxury Home Textiles

# Hemisphere

[www.vayahome.com](http://www.vayahome.com)  
[sales@vayahome.com](mailto:sales@vayahome.com)





Blues, greens, and beiges harmonize in Hemisphere, a collection inspired by the textures, structures, and elements that make up the earth. Multipurpose fabrics well-suited for heavy use, the Hemisphere collection of textiles are a whimsical, imaginative way of viewing the world.



**Above — Cushions** Eclipse Dove, Apex Blue Stone, Fossil Vanilla  
**Ottoman** Apex Vanilla **Right — Curtain** Fossil Vanilla, **Cushions** Ultima Pebble,  
Eclipse Vanilla.





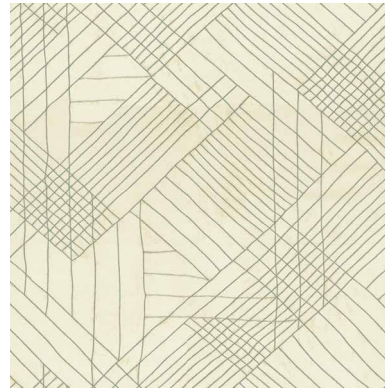
**Curtain** Phoenix Dove, **Chair** Eclipse Vanilla, **Cushion** Fossil Dove



**Curtain** Mist Blue Stone



**Above** — Phoenix Blue Stone **Top left** — Eclipse Dove **Left bottom** — Fossil Sky Grey



Apex Blue Stone



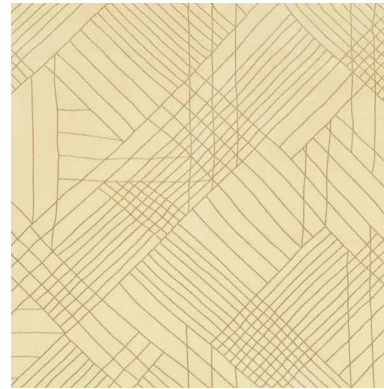
Apex Dove



Apex Pebble



Apex Sky Grey



Apex Vanilla

**Apex**

A minimal, modern representation of loftypeaks, Apex's rough parallel lines and mottled detail give it a wide and expansive air.

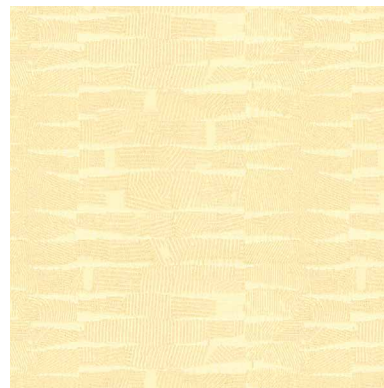
Composition: 7% Acrylic, 93% Polyester  
End Use: Multipurpose



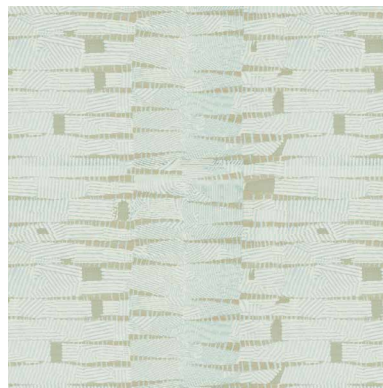
Eclipse Blue Stone



Eclipse Dove



Eclipse Pebble



Eclipse Sky Grey



Eclipse Vanilla

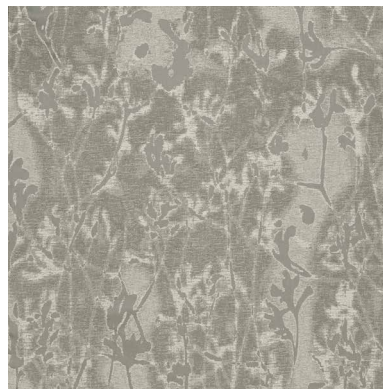
**Eclipse**

The irregular lines in short bursts give Eclipse an almost palpable energy. Eclipse is a robust fabric with a universally appealing design.

Composition: 20% Viscose, 28% Linen, 52% Polyester  
End Use: Multipurpose



Fossil Blue Stone



Fossil Dove



Fossil Pebble



Fossil Sky Grey



Fossil Vanilla

**Fossil**

Splashes of metallic weave gleam across the abstract floral design of Fossil. This pattern-on-pattern textile makes use of light and shadow to create a complete scenery.

Composition: 19% Viscose, 20% Linen, 61% Polyester  
End Use: Multipurpose



Phoenix Blue Stone



Phoenix Dove



Phoenix Pebble



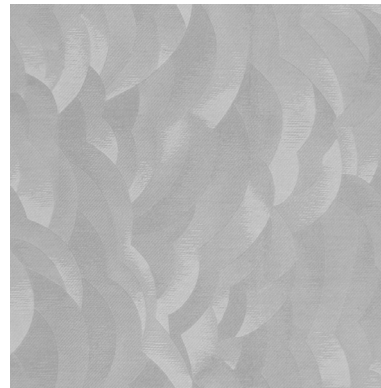
Phoenix Vanilla

**Phoenix**  
Whole birds in flight against a sky of clouds, Phoenix embodies a sweeping openness and immensity.

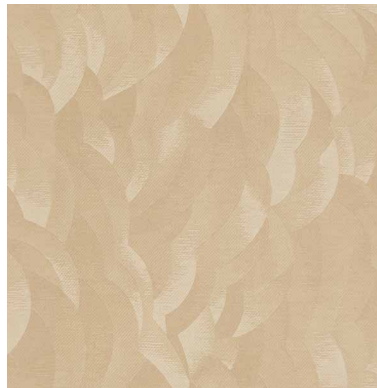
Composition: 17% Linen, 35% Polyester, 48% Viscose  
End Use: Multipurpose



Ultima Blue Stone



Ultima Dove



Ultima Pebble



Ultima Vanilla

**Ultima**  
The colours of the sky are brought to life in Ultima. With gentle shapes and soft to the touch, Ultima is a delightful textile that uplifts a space.

Composition: 11% Polyester, 89% Viscose  
End Use: Multipurpose



Mist Blue Stone



Mist Sky Grey



Mist Vanilla

**Mist**  
True to its namesake, Mist suggests a light fog rolling in from the crests of a hill range or rising up from a flowing river.

Composition: 28% Viscose, 72% Polyester  
End Use: Multipurpose





Luxury Home Textiles

VAYA Home designs, curates and produces textiles for drapery and upholstery in a variety of fibres and tactile techniques.

Leveraging decades of textile designing and production expertise, the Jaipuria Mill in collaboration with international creatives, conceived the VAYA Home brand to weave thoughtfully constructed fabrics for interior decorators globally.

Combining hand crafted arts with machine exacted techniques unique to the mill, the VAYA collections aim to delight and surprise through the use of pattern, materials, and colours in their textiles.

Our products are sold through leading retailers as cut length yardage and are suitable for residential and commercial application.

[www.vayahome.com](http://www.vayahome.com)  
[sales@vayahome.com](mailto:sales@vayahome.com)