

WYVA

FANTASIA





IRIS
36% CO, 30% PES, 17% CV, 17% LI



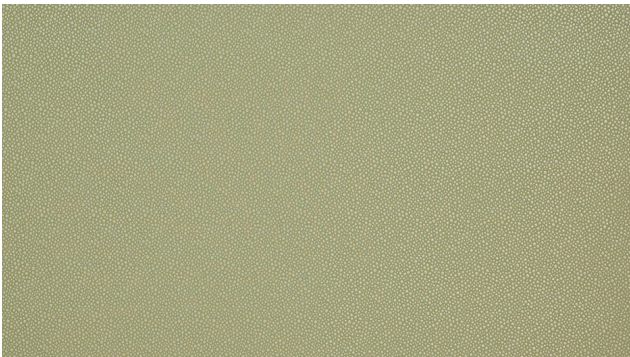
LOU
18% PES, 24% CV, 58% CO



LILY
100% LI



AZALEA
45% CO, 55% LI



POLKA
7% SE, 15% CO, 54% CV, 24% PES



TEPEE
19% PES, 81% CV



BATAHLA
5% SE, 21% LI, 11% CO, 29% PES, 34% CV

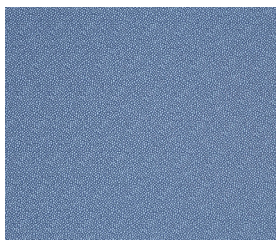


SUIBOKU
47% PES, 26% LI, 27% CO

fantasia.

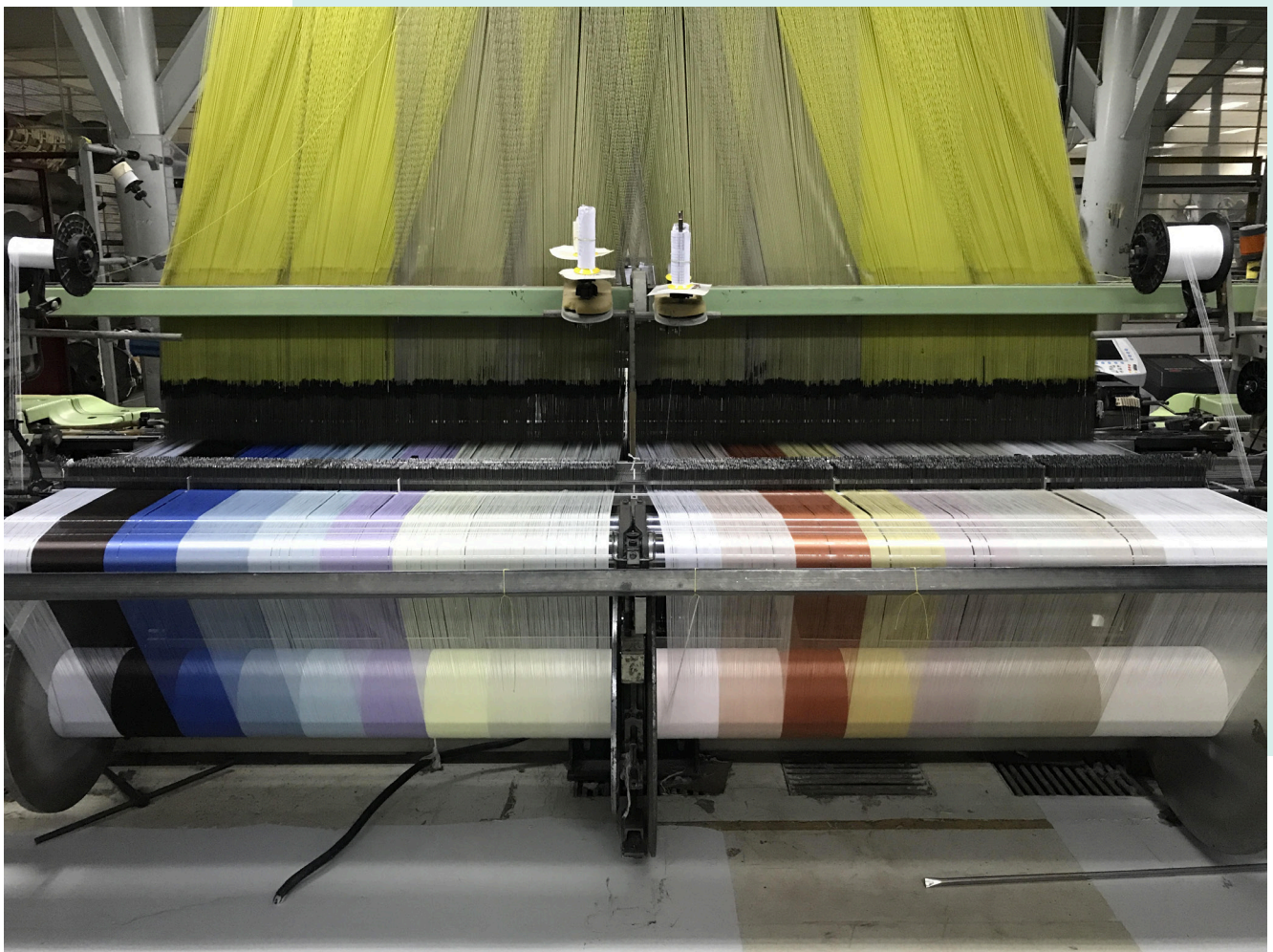
Fun designs in sophisticated colour pallets that are inspired a global, well-traveled story. Fantasia fabrics take you on a journey of Ikats, vibrant embroidery stripes, variegated silk paisleys, and floral prints.











VAYA

Combining hand-crafted arts with machine exacted techniques, VAYA are launching four new collections of home furnishing fabrics, Luxvara, Fantasia, Venezia and Madison. From globally inspired modern designs to boldly coloured damasks to art deco Gatsbyesque motifs, fabrics in the VAYA collections are comprised of a vast variety of cutting-edge qualities, colours and inspirations.