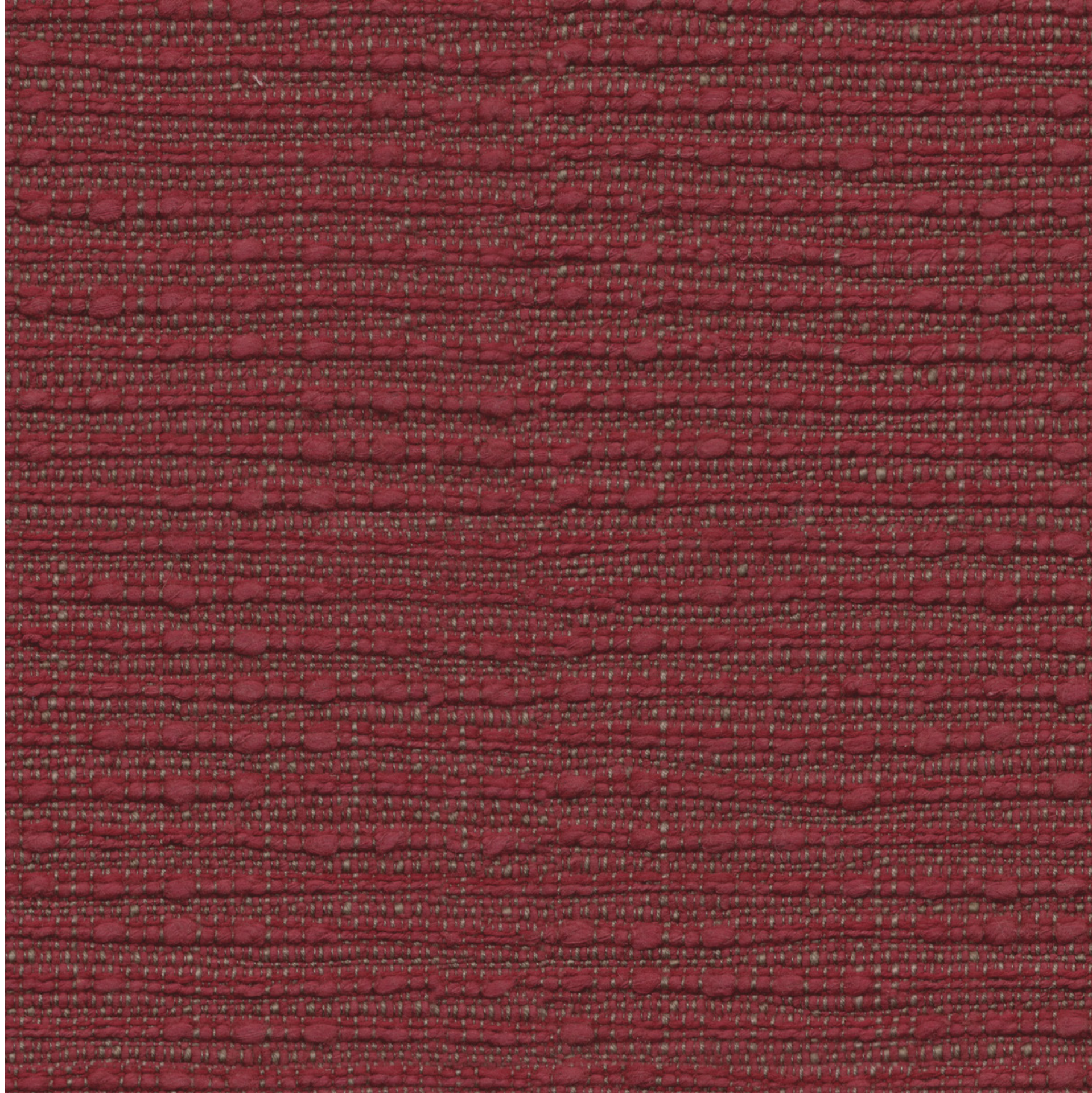




Luxury Home Textiles

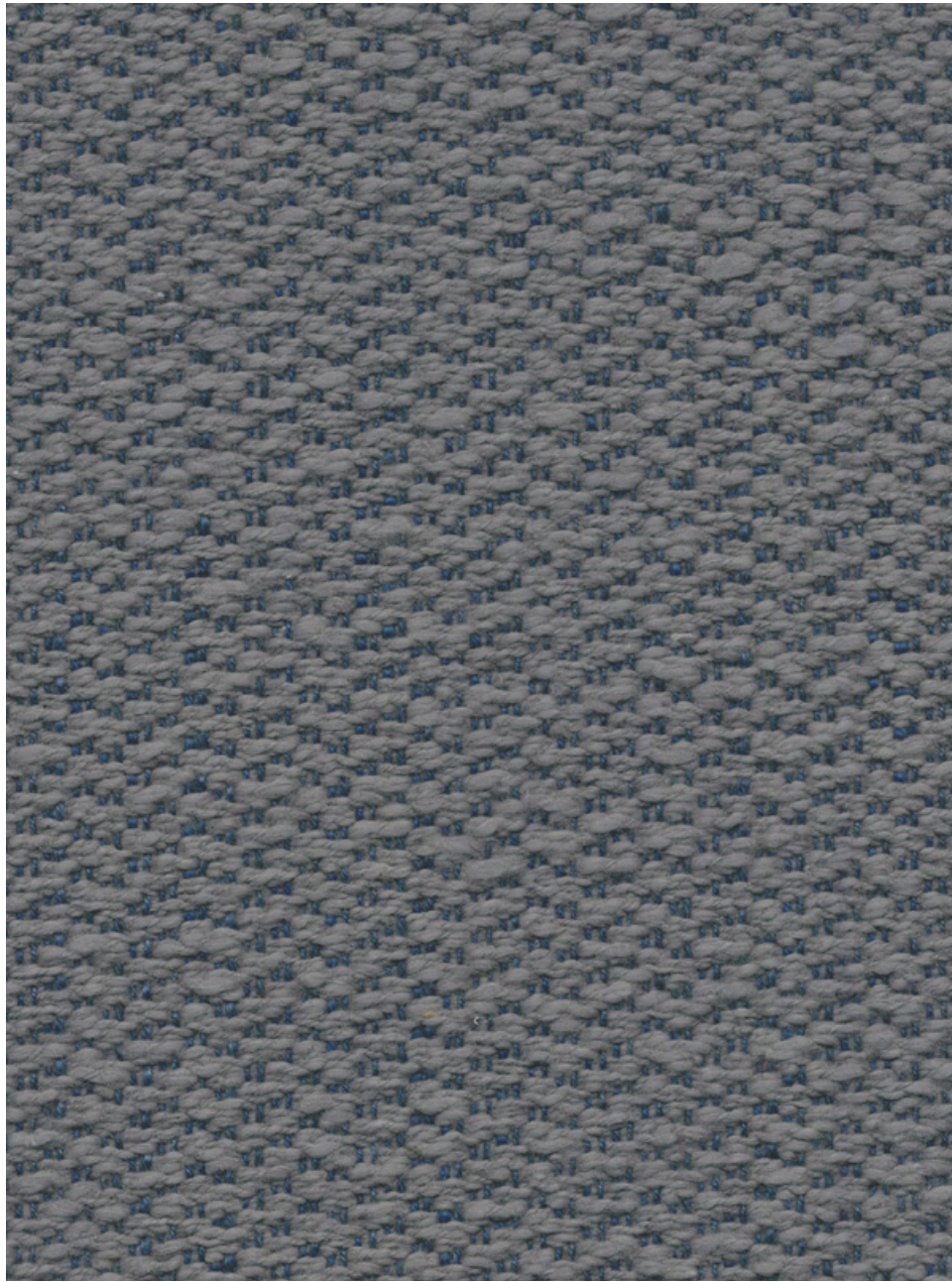
Endura Stain Repellent Upholstery

www.vayahome.com
sales@vayahome.com





The Endura Upholstery collection features strong and robust fabrics designed for enduring style and durability. Available in a full spectrum of colours, each fabric lends its own unique charm to a space, from tranquil hues evoking serenity to patterns bringing in an organic touch.



Above — Harmony Slate

Right — Left to Right Nirvana Noir, Tranquil Noir, Nirvana Mojave Desert





Above — Nirvana Mojave Desert
Left — **Top to Bottom** Nirvana Marshmellow, Harmony Papyrus,
Harmony Tan



Above — Left to Right Tranquil Blue Iris, Tranquil Sand



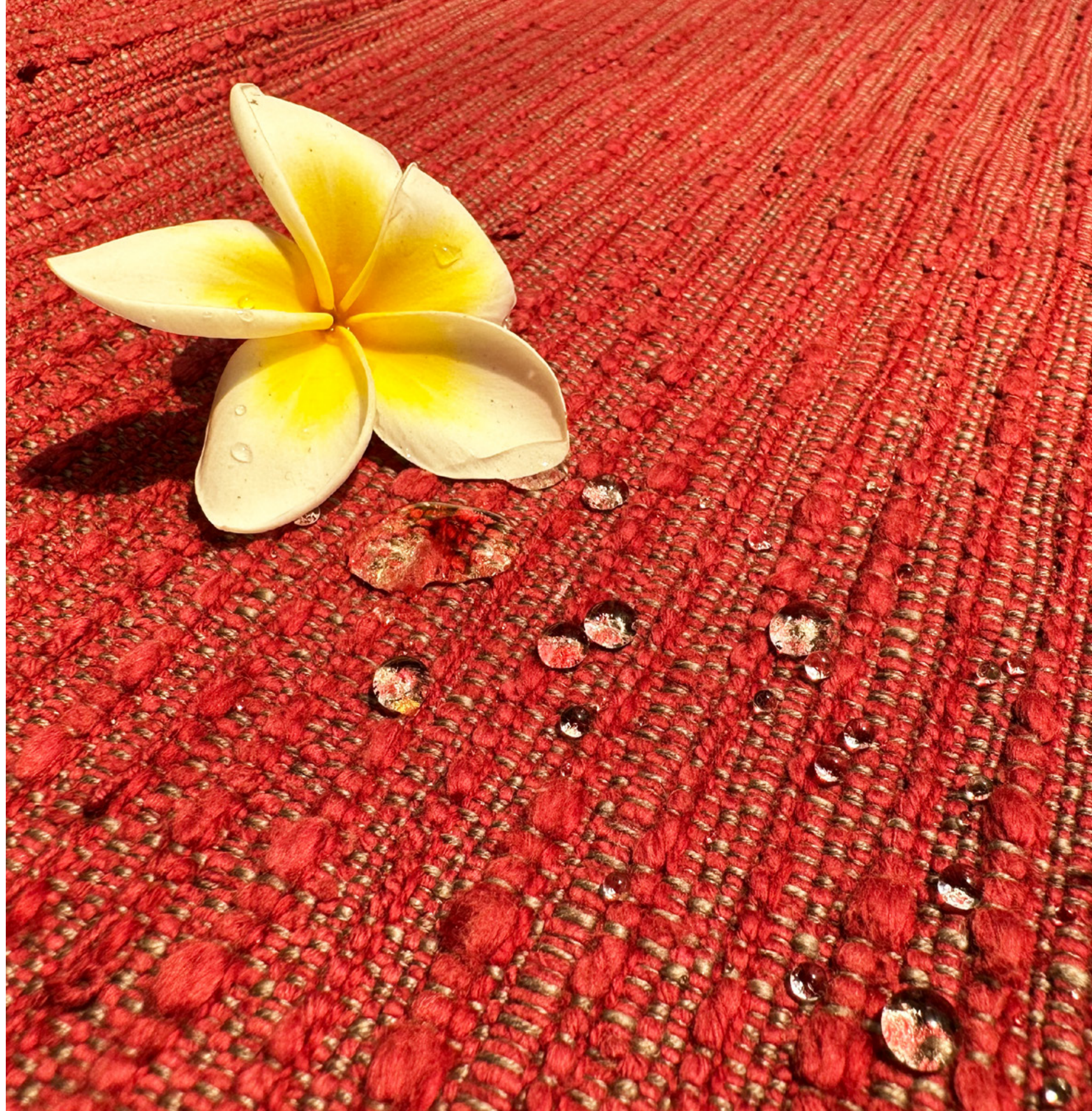
Above — Left to Right Harmony Noir, Nirvana Noir, Tranquil Noir



Fabrics — Left to Right Harmony Cinnamon, Nirvana Cinnamon, Tranquil Cinnamon



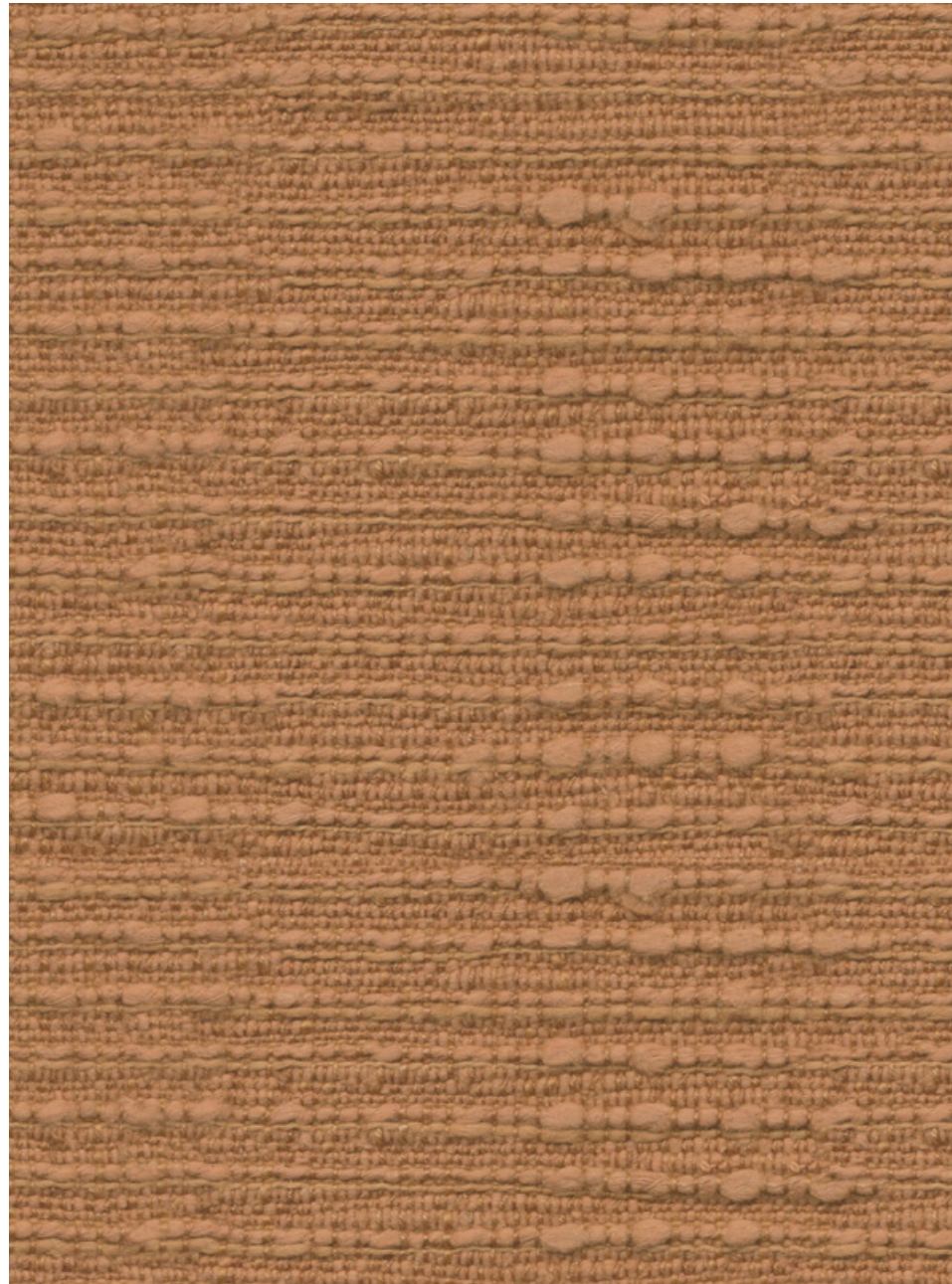
Fabric — Above Harmony Tan





Above — Nirvana Noir

Left — **Top to Bottom** Nirvana Mojave Desert, Tranquil Noir, Nirvana Noir



Above — Nirvana Crimson

Right — **Left to Right** Harmony Clove, Nirvana Cocoa Brown, Tranquil Slate





Fabrics — Top to Bottom Nirvana Marshmellow, Harmony Papyrus, Harmony Tan



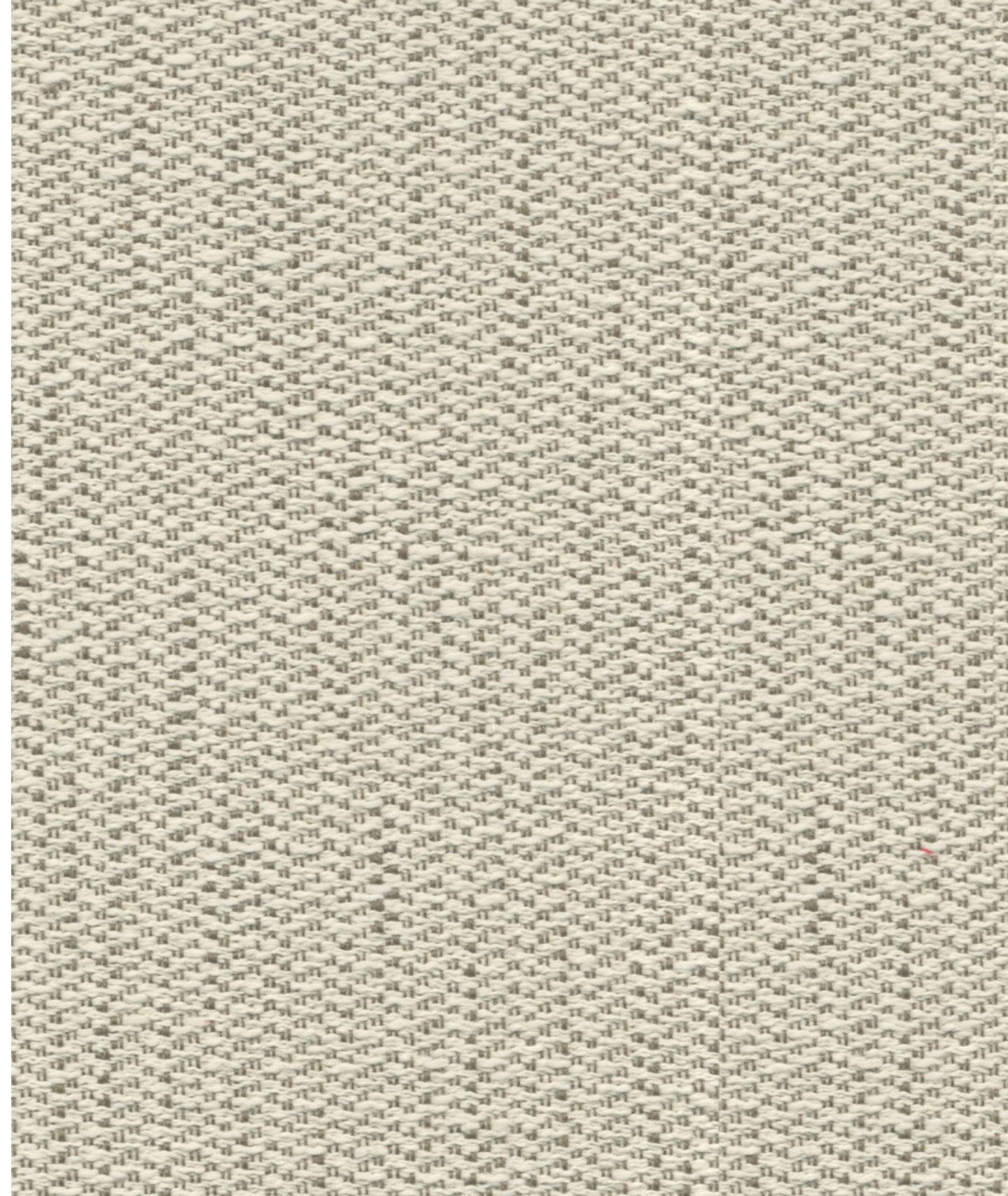
Fabric — Above Tranquil Blue Iris



Fabrics — Top to Bottom Tranquil Midnight Blue, Harmony Slate, Nirvana Midnight Blue



Above — Top to Bottom Nirvana Crimson, Harmony Slate



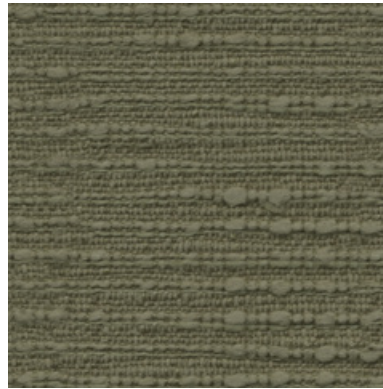
Above — Harmony Tan



Fabrics — Top to Bottom Nirvana Mojave Desert, Nirvana Coca Brown, Harmony Tan



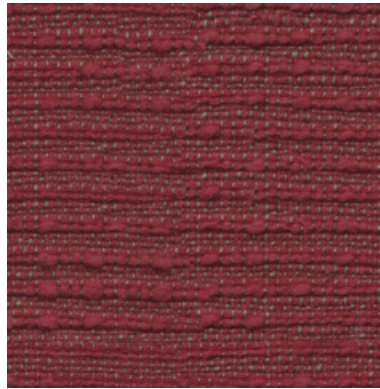
Nirvana Noir



Nirvana Olive



Nirvana Cocoa Brown



Nirvana Crimson



Nirvana Cinnamon



Nirvana Marshmellow



Nirvana Midnight Blue



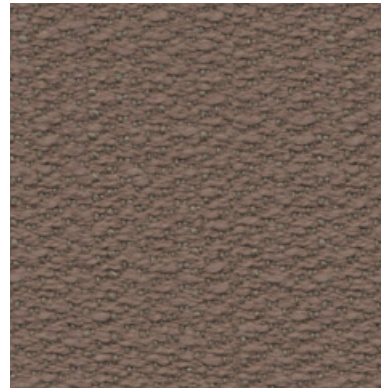
Nirvana Mojave Desert

Nirvana

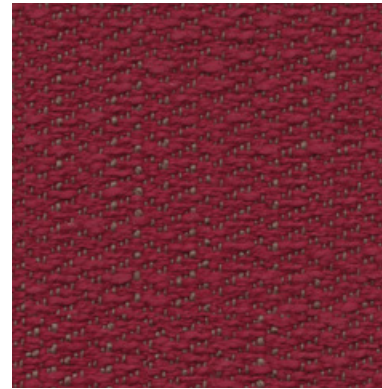
Nirvana showcases the versatility of individual colours, employing them in various styles within the same weave to create a captivating striped, almost pebbled appearance. Its naturally meandering lines exude an enchanting organic charm.

Composition: 87% Cotton, 10% Linen, 2% Polyester, 1% Viscose

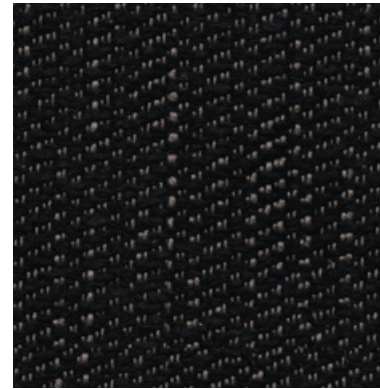
End Use: Upholstery, Cushions



Harmony Clove



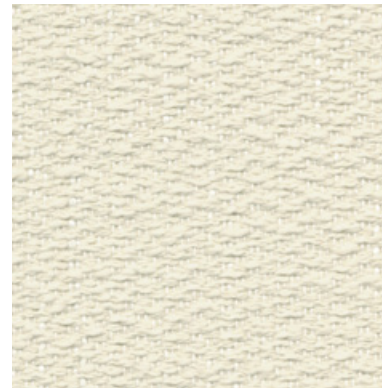
Harmony Crimson



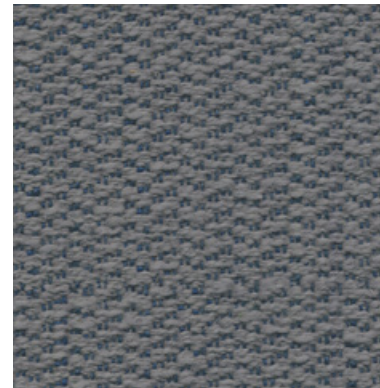
Harmony Noir



Harmony Olive



Harmony Papyrus



Harmony Slate



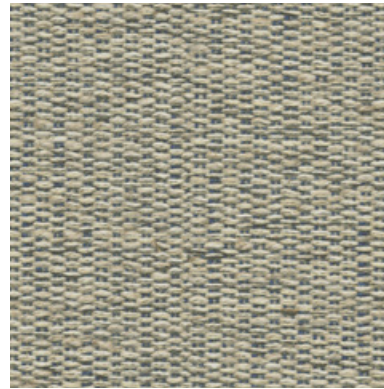
Harmony Tan

Harmony

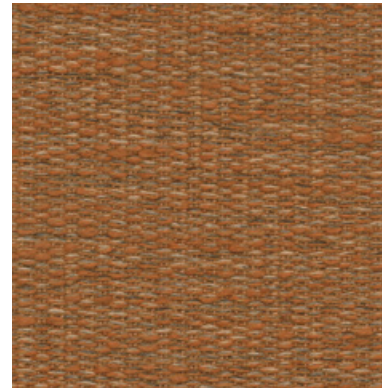
Harmony exudes an expansive embroidered look, where thick yarns create a layered appearance, infusing depth and dimension into the pattern. The result is a sturdy upholstery fabric with an organic feel.

Composition: 86% Cotton, 12% Linen, 1% Polyester, 1% Viscose

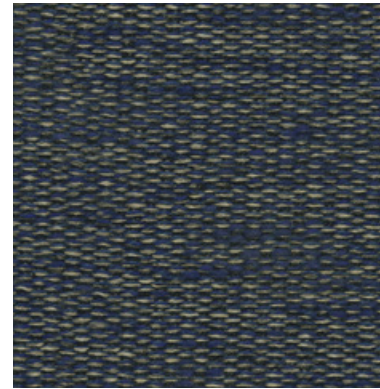
End Use: Upholstery, Cushions



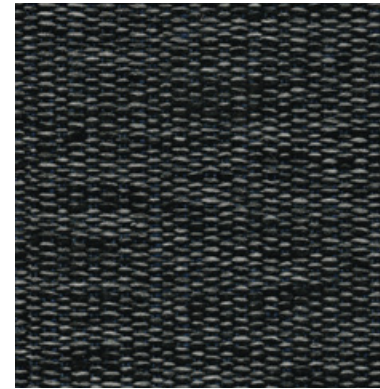
Tranquil Blue Iris



Tranquil Cinnamon



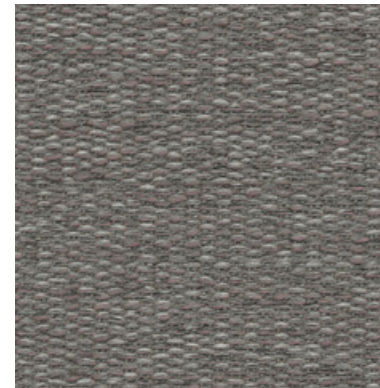
Tranquil Midnight Blue



Tranquil Noir



Tranquil Sand



Tranquil Slate

Tranquil

Tranquil entralls with its deep colors complemented by bright tones, evoking the serene surface of water reflecting light on countless delicate ripples. It is an ideal choice to bring a sense of the sublime to a space.

Composition: 60% Cotton, 13% Linen, 20% Polyester, 5% Lyocell, 2% Viscose
End Use: Upholstery, Cushions



Luxury Home Textiles

VAYA Home designs, curates and produces textiles for drapery and upholstery in a variety of fibers and tactile techniques.

Leveraging decades of textile design and production expertise, the Jaipuria Mill in collaboration with international creatives, conceived the VAYA Home brand to weave thoughtfully constructed fabrics for interior decorators globally.

Combining hand crafted arts with machine exacted techniques unique to the mill, the VAYA collections aim to delight and surprise through the use of pattern, materials, and colors in their textiles.

Our products are sold through leading retailers as cut length yardage and are suitable for residential and commercial application.

www.vayahome.com

sales@vayahome.com