



Luxury Home Textiles

Bohemia

www.vayahome.com
sales@vayahome.com





Unconventional and artistic, the fabrics of the Bohemia collection give a bespoke look. Gleaming embroidery on matte bases shines like highlights as they form unorthodox patterns, creating a collection that enchants.



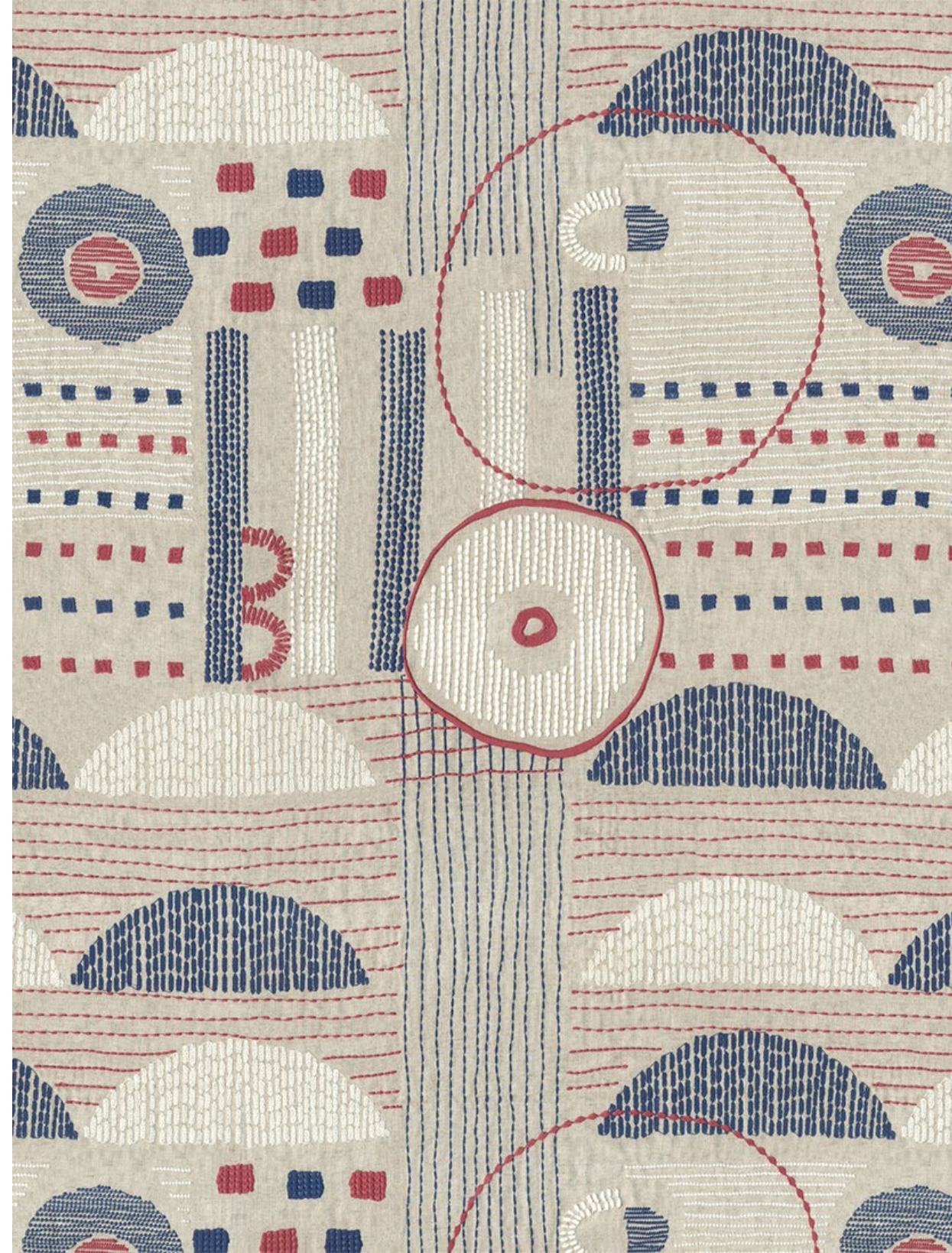
Above — Aralia Rusty Orange, Cosmos Rust **Top left** — Supernova Copper Tan
Bottom left — Supernova Terracotta



Curtain Supernova Copper Tan,
Chair Alexandria Upholstry Minerva Tinsel



Left to Right — Aralia Rusty Orange, Aralia Midnight Blue, Aralia Birch, Aralia Green Bay, Aralia Ochre



Above — Cosmos Steel Blue **Top left** — Cosmos Pewter **Bottom left** — Cosmos Rust



Above — Cosmos Steel Blue
Right — **Top to Bottom** Matrix Green Bay, Matrix Mirage Grey,
Matrix Redwood, Matrix Mineral Blue





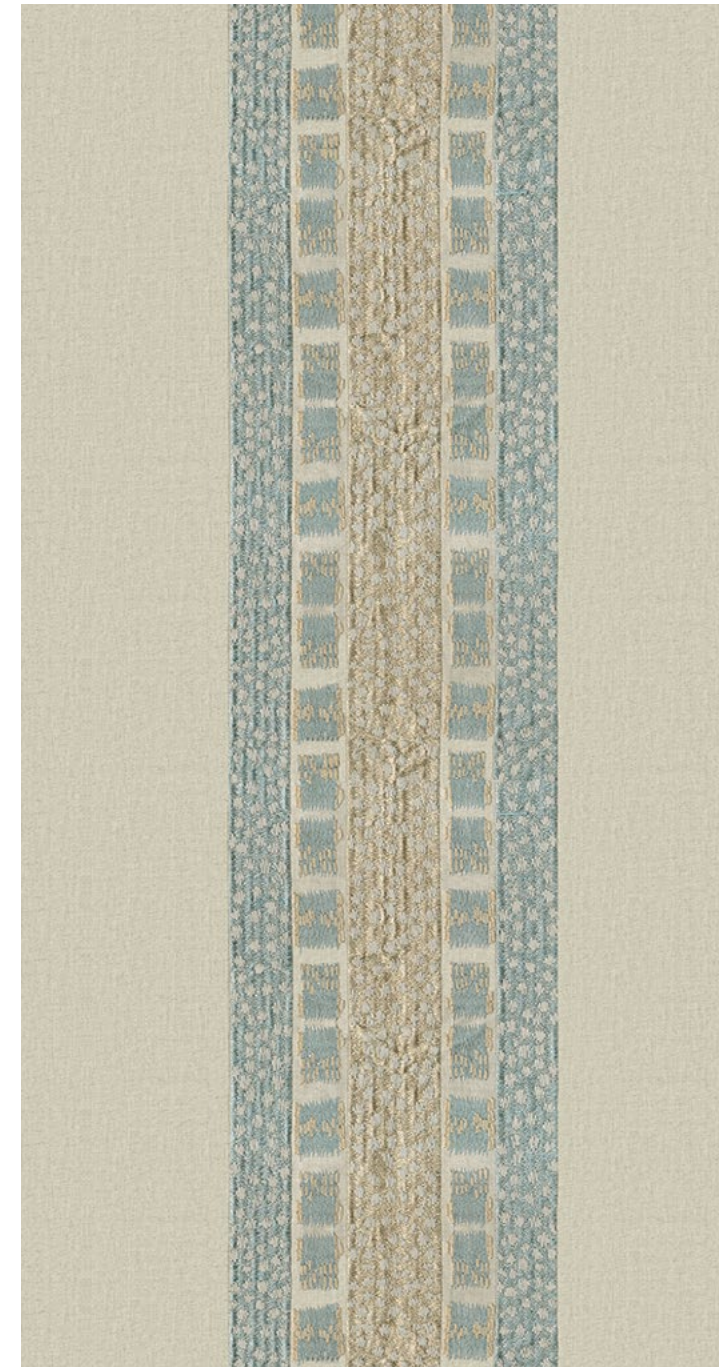
Matrix Redwood



Matrix Green Bay



Matrix Mineral Blue



Matrix Mirage Grey



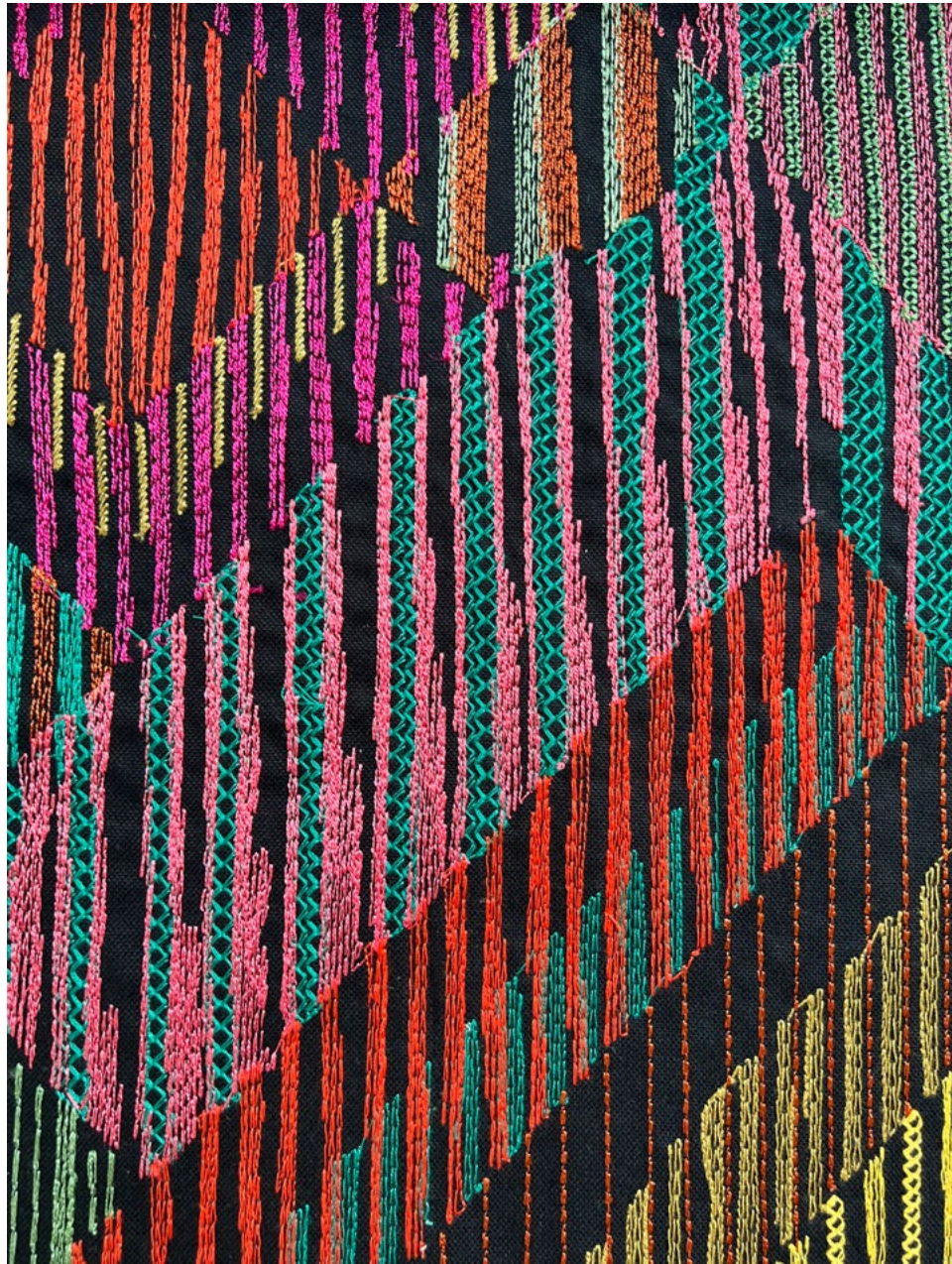
Curtain Optima Midnight
Pouf Ajmer 4018 Raffia



Above — Optima Cloud Pink

Right — **Top to Bottom** Optima Cloud Pink, Optima Mineral Blue, Optima Midnight, Optima Khaki





Above — Fuji Midnight (Detail)
Left — Fuji Midnight





Above — Fuji Oyster Grey

Right — **Top to Bottom** Matrix Mirage Grey, Aralia Birch, Iris Indigo







Above — Top to Bottom Orbit Hemp, Fuji Oyster Grey (Detail)
Left — Top to Bottom Orbit Birch, Orbit Hemp, Orbit Tobacco Brown



Above — Calamus Raspberry **Top left** — Calamus Antelope **Bottom left** — Calamus Cobalt Blue



Curtain Calamus Antelope



Aralia Birch



Aralia Green Bay



Aralia Midnight Blue



Aralia Ochre



Aralia Rusty Orange

Aralia

Light and shadow dapple in Aralia for a lifelike pattern in fantastical shapes. Its leaves seem to float as they spread across the fabric in an appealing and whimsical design.

Composition: 36% Cotton, 30% Polyester, 17% Viscose, 17% Linen`

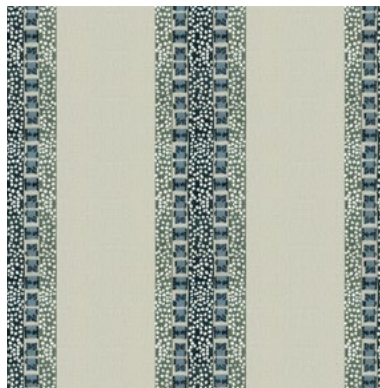
End Use: Multipurpose



Matrix Green Bay



Matrix Redwood



Matrix Mineral Blue



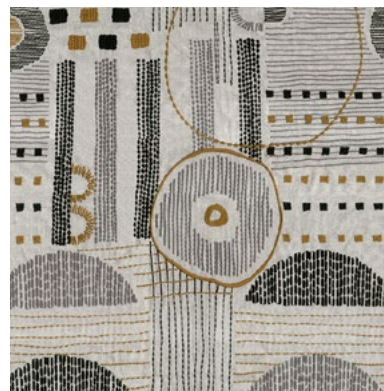
Matrix Mirage Grey

Matrix

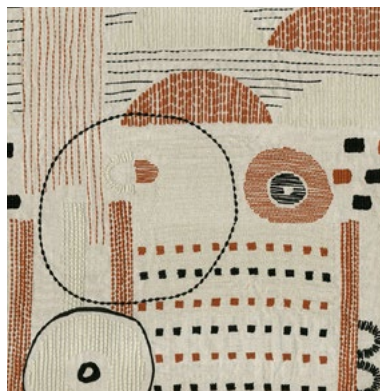
The contrast between the embroidered columns and the neutral base of Matrix opens up a world of creative looks. A design that surprises with its orderly chaos, Matrix has a distinctive look.

Composition: 45% Cotton, 55% Linen

End Use: Multipurpose



Cosmos Steel Blue



Cosmos Rust



Cosmos Steel Blue

Cosmos

Cosmos spurs the mind towards imagination, leaving itself open to interpretation. A world, a universe, a cityscape - bustling with activity that still only punctuates a great expanse, Cosmos transforms simple lines and shapes into a story through exquisite stitches and perfect balance.

Composition: 65% Linen, 35% Viscose

End Use: Drapery, Cushions



Optima Cloud Pink



Optima Khaki



Optima Midnight

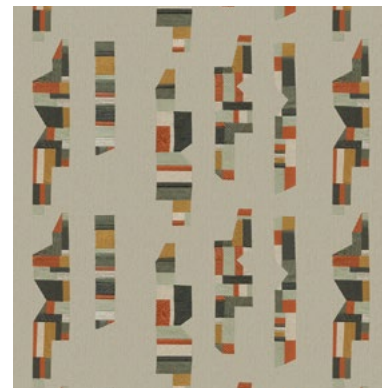


Optima Mineral Blue

Optima

Neat and carefree, Optima is happy and fun. A generous variety of patterns and colours limited to small blocks appearing at random intervals - Optima has an upbeat vibe, a unique, playful but elegant charm.

Composition: 100% Linen
End Use: Drapery, Cushions



Supernova Copper Tan



Supernova Denim



Supernova Terracotta

Supernova

Supernova is an interplay of shapes, colours, and stitches coming together in a seemingly unassuming pattern. Revealing its riches on closer look, Supernova stuns with its easy grace and visual effects.

Composition: 55% Cotton, 45% Linen
End Use: Multipurpose



Calamus Antelope



Calamus Cobalt Blue



Calamus Raspberry

Calamus

Calamus offers a different lens from which to view botanic motifs. Gleaming threads outline the structure of large leaves fanning across the fabric for a splendid and distinguished look.

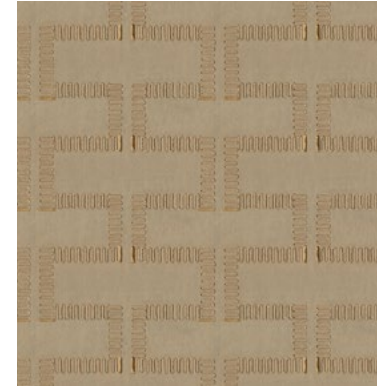
Composition: 100% Cotton
End Use: Drapery, Cushions



Orbit Birch



Orbit Hemp



Orbit Tobacco Brown

Orbit

Lines of cord embroidery ebb and flow across Orbit, its line unbroken save for neat accents along their journey. Sophisticated and sleek, Orbit elevates a space through simple design and refined look.

Composition: 100% Cotton
End Use: Drapery, Cushions



Fuji Midnight



Fuji Oyster Grey

Fuji

A maze of straight lines, Fuji's design makes its pattern look almost layered. Minute stitches and a symphony of colours offer a tantalizing visual experience in 2 distinct palettes.

Composition: 100% Cotton
End Use: Multipurpose



Luxury Home Textiles

VAYA Home designs, curates and produces textiles for drapery and upholstery in a variety of fibers and tactile techniques.

Leveraging decades of textile design and production expertise, the Jaipuria Mill in collaboration with international creatives, conceived the VAYA Home brand to weave thoughtfully constructed fabrics for interior decorators globally.

Combining hand crafted arts with machine exacted techniques unique to the mill, the VAYA collections aim to delight and surprise through the use of pattern, materials, and colors in their textiles.

Our products are sold through leading retailers as cut length yardage and are suitable for residential and commercial application.

www.vayahome.com
sales@vayahome.com