



Luxury Home Textiles

Alexandria Upholstery

www.vayahome.com
sales@vayahome.com





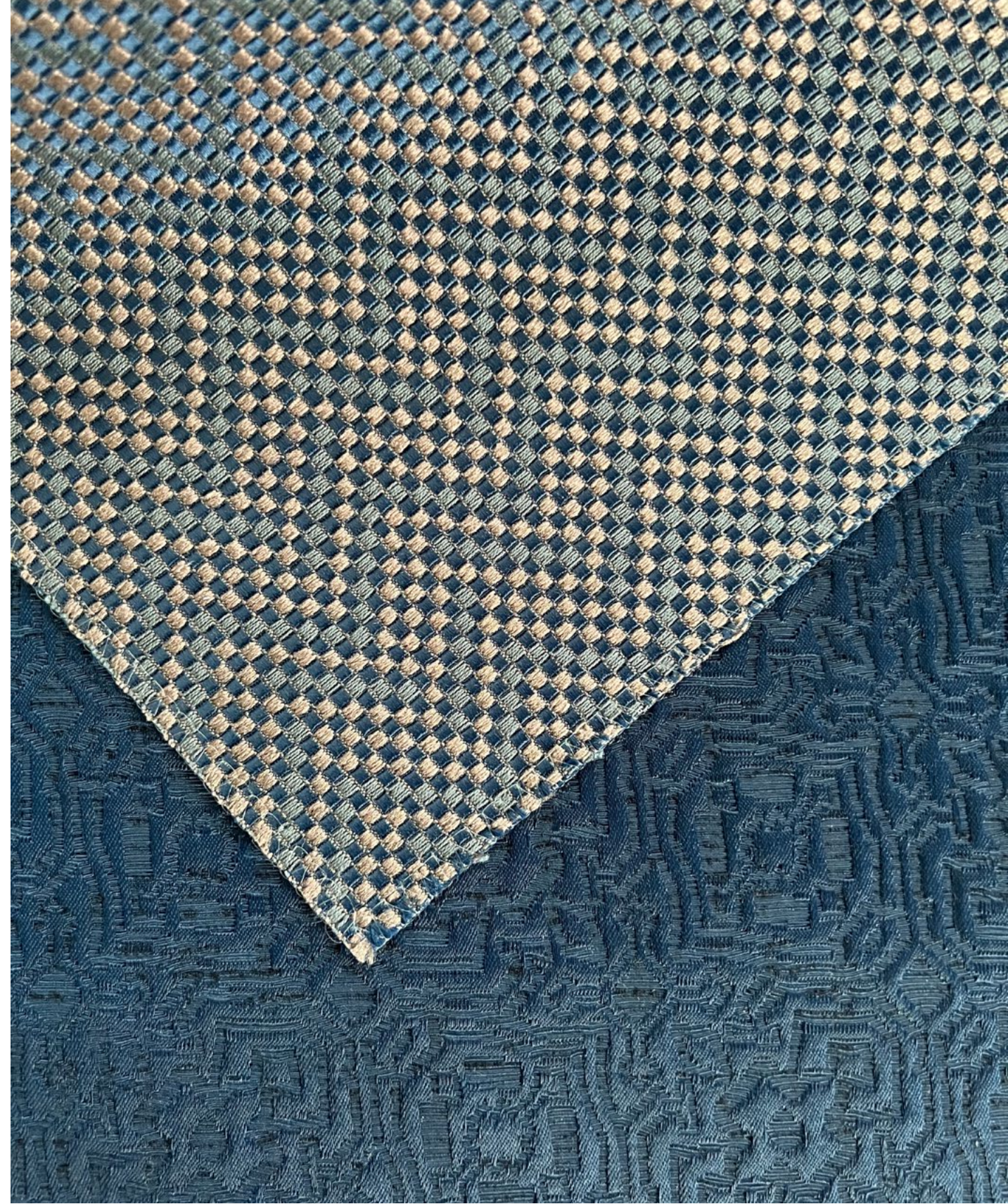
The Alexandria Upholstery collection offers sophisticated fabrics in both deep colours and neutral tones. Constructed to be particularly durable, Alexandria brings out the best of each pattern and textile through precise and varied techniques, offering a range of sleek, elegant effects. Be it a statement piece, room accent, or an understated element of a space, the Alexandria collection offers a superior choice for all.



Sofa Ridgewood Mustard,
Cushions Ridgewood Brownie, Ridgewood Teal



Above — Top to bottom Morrisville Ink, Williamsville Ink, Brentwood Ink, Bridgeport Ink



Above — Top to bottom Ridgewood Ink, Morrisville Ink



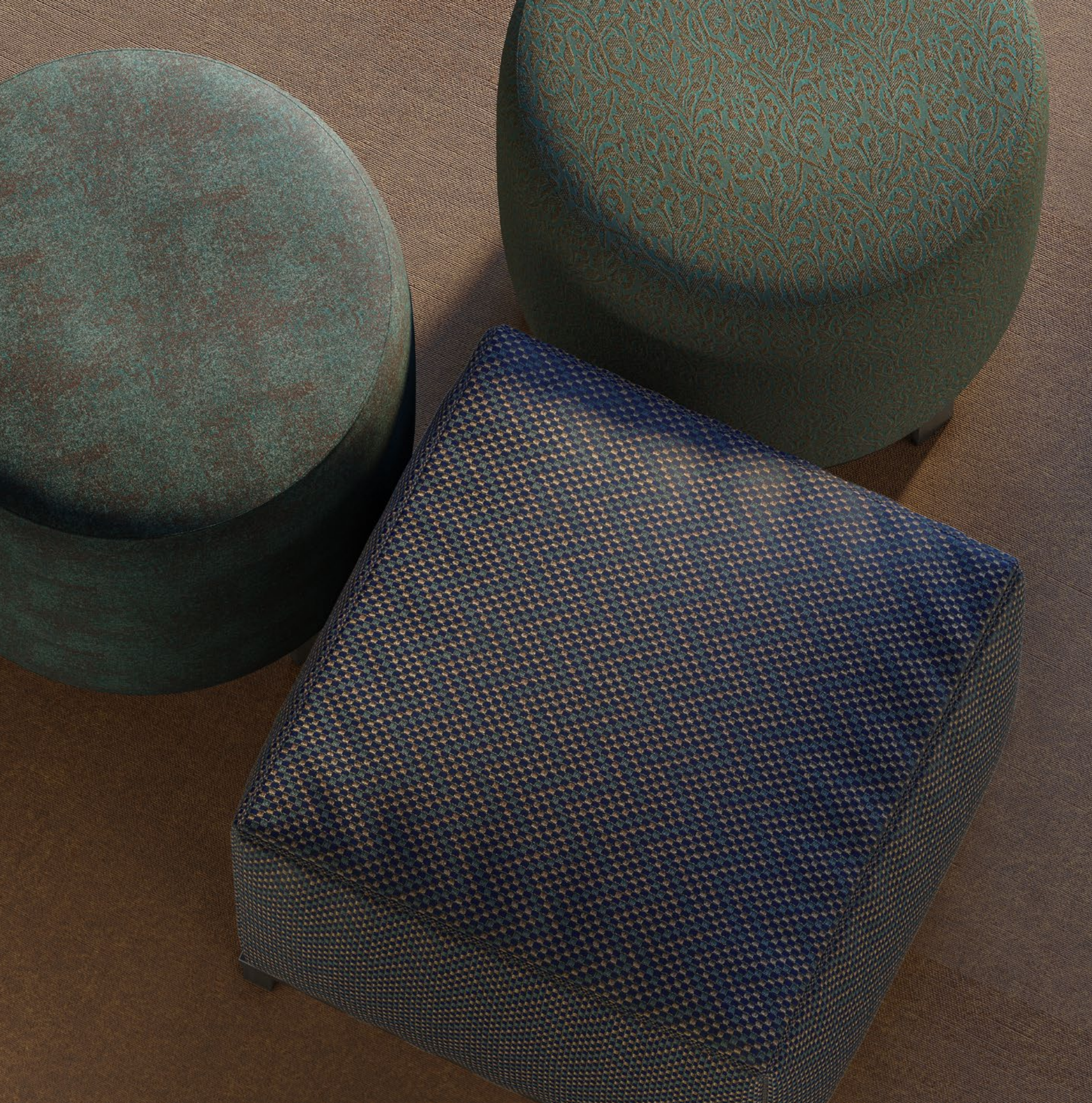
Armchair inner fabric and cushion Morrisville Ink
Armchair outer fabric Bridgeport Ink



Above — Top to bottom Bridgeport Brownie, Williamsville Brownie, Morrisville Brownie



Above — Top to bottom Bridgeport Brownie, Brentwood Brownie, Bridgeport Tapioca



Poufs — **Left** Brentwood Teal, **Top** Bridgeport Teal,
Bottom Ridgewood Ink



Fabrics — Right to left Ridgewood Teal, Bridgeport Teal, Williamsville Teal, Brentwood Teal, Chesterfield Teal, Montgomery Teal, Alamos Teal



Chairs — Left Alamos Teal, **Right** Alamos Copper



Above — Top to bottom Montgomery Copper, Bridgeport Copper, Kirkwood Copper



Above — Top to bottom Kirkwood Copper, Ajmer 4031Pumpkin, Alamos Copper



Curtain Basque Snow, **Sofa** Kirkwood Copper,
Cushions — Left to right Montgomery Copper,
Williamsville Mustard, Ridgewood Mustard, Ridgewood Teal
Pouf Montgomery Copper



Above — Top to Bottom Morrisville Chili, Williamsville Chili



Above — Top to Bottom Chesterfield Mustard, Williamsville Mustard, Bridgeport Mustard, Ridgewood Mustard





Fabrics — Left to right Clayton Drizzle,
Chesterfield Drizzle, Williamsville Smog,
Morrisville Drizzle



Sofa Cordoba Sahara, **Cushions** Bridgeport Teal, Montgomery Copper



Above — Top to Bottom Bridgeport Tapioca, Brentwood Smog, Montgomery Mocha



Above — Top to Bottom Morrisville Smog, Kirkwood Smog, Chesterfield Silver



Fabrics — Left to right
Chesterfield Silver, Morrisville Smog,
Clayton Drizzl, Alamos Drizzle



Chairs — Left Alamos Silver, **Right** Alamos Drizzle



Above — Top to Bottom Morrisville Silver, Clayton Mocha, Alamos Mocha



Above — Top to Bottom Alamos Smog, Montgomery Drizzle, Bridgeport Drizzle



Above — Top to Bottom Ridgewood Swan, Williamsville Smog, Kirkwood Silver, Brentwood Silver, Chesterfield Dove



Above — Top to Bottom Kirkwood Silver, Brentwood Silver, Chesterfield Dove



Curtain Aragon Cashew, **Sofa and Pouf** Kirkwood Smog,
Cushions Alamos Silver, Williamsville Smog, Ridgewood Swan



Alamos Copper



Alamos Drizzle



Alamos Mocha



Alamos Silver

Alamos

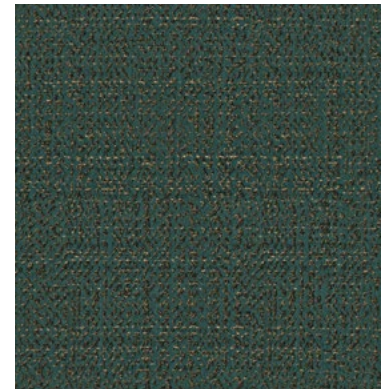
The dual-toned strands in Alamos' weft thrum with a gentle sheen. A heavy-duty textile, Alamos has an earthy but graceful look.

Composition: 10% Viscose, 20% Nylon, 70% Polyester

End Use: Cushions, Upholstery



Alamos Smog



Alamos Teal



Clayton Drizzle



Clayton Mocha



Clayton Thunderstorm

Clayton

Geometry meets free-flow in Clayton, creating a fun, refined pattern. Its colours play off each other as they alternate, giving this fabric an alluring touch.

Composition: 24% Nylon, 25% Cotton, 51% Polyester

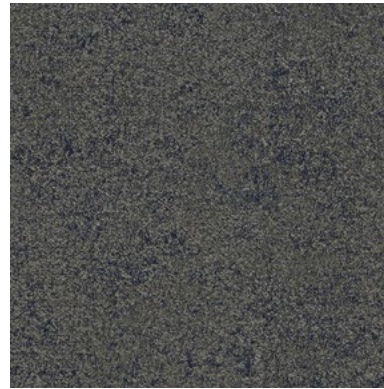
End Use: Cushions, Upholstery



Brentwood Brownie



Brentwood Cement



Brentwood Ink



Brentwood Sage



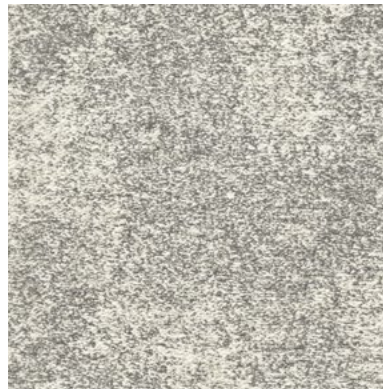
Brentwood Silver

Brentwood

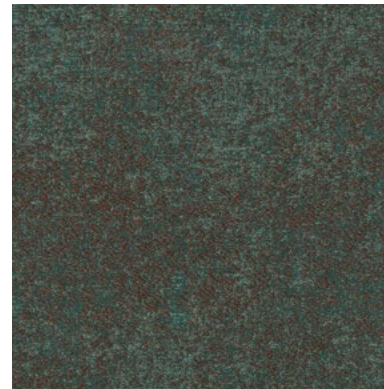
Vintage gets new life in Brentwood, an elegant fabric meticulously crafted for a textured look. Available in an assortment of colours, Brentwood's look and feel ranges from classic to regal.

Composition: 15% Polyester, 26% Nylon, 59% Cotton

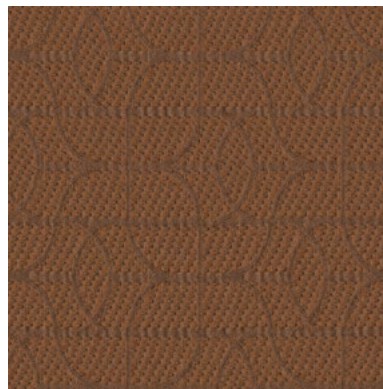
End Use: Cushions, Upholstery



Brentwood Smog



Brentwood Teal



Kirkwood Copper



Kirkwood Mocha



Kirkwood Silver



Kirkwood Smog

Kirkwood

A geometric design upon a woven pattern, Kirkwood lends a sophisticated air to a space. Its smooth curves and fine base complement each other to bring an understated grandeur to the fabric.

Composition: 21% Cotton, 27% Nylon, 52% Polyester

End Use: Cushions, Upholstery



Bridgeport Brownie



Bridgeport Copper



Bridgeport Drizzle



Bridgeport Ink



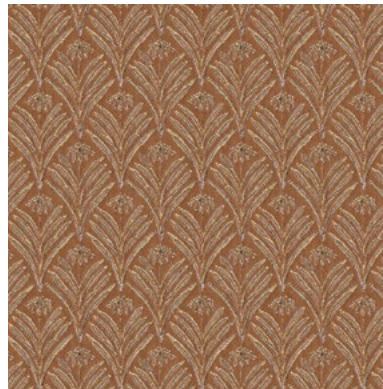
Bridgeport Mustard



Bridgeport Tapioca



Bridgeport Teal



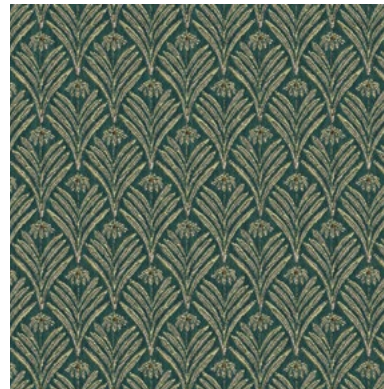
Montgomery Copper



Montgomery Drizzle



Montgomery Mocha



Montgomery Teal

Bridgeport

An all-over floral landscape spreads across Bridgeport, grand in its metallic shine. This stunning fabric gleams with the light in splendid tones.

Composition: 30% Cotton, 32% Nylon, 38% Polyester

End Use: Cushions, Upholstery

Montgomery

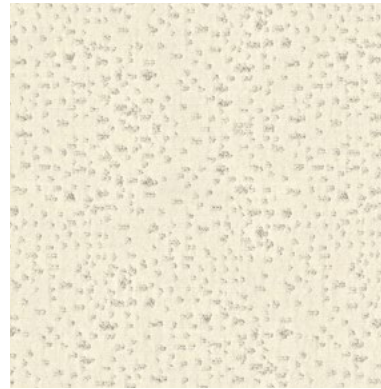
Montgomery's all-over pattern is riveting, the fine lines and rhythm elevating its simple repeat and adding depth to the individual motifs.

Composition: 22% Polyester, 23% Nylon, 55% Viscose

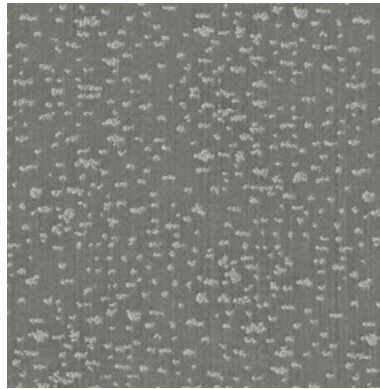
End Use: Cushions, Upholstery



Chesterfield Charcoal



Chesterfield Dove



Chesterfield Drizzle



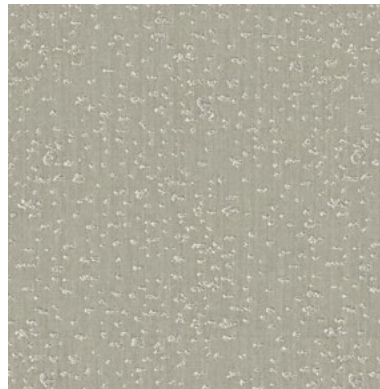
Chesterfield Lavender



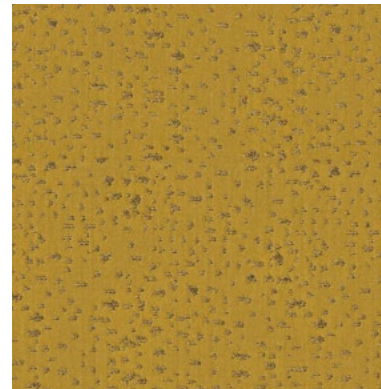
Chesterfield Teal



Chesterfield Tapioca



Chesterfield Silver



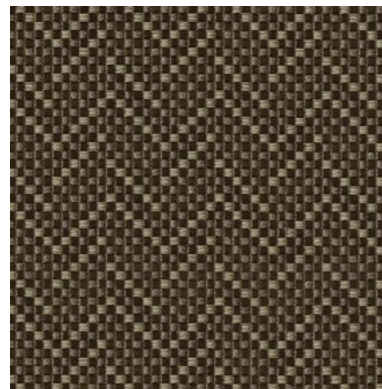
Chesterfield Mustard

Chesterfield

Supple and glamorous, Chesterfield evokes the sense of a starry night sky or a field dotted with flowers. Its simplicity and softness makes it a suave, sumptuous choice.

Composition: 30% Nylon, 35% Cotton, 35% Polyester

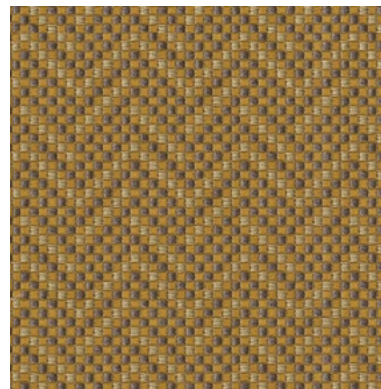
End Use: Cushions, Upholstery



Ridgewood Brownie



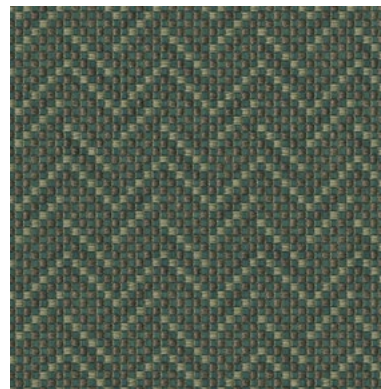
Ridgewood Ink



Ridgewood Mustard



Ridgewood Swan



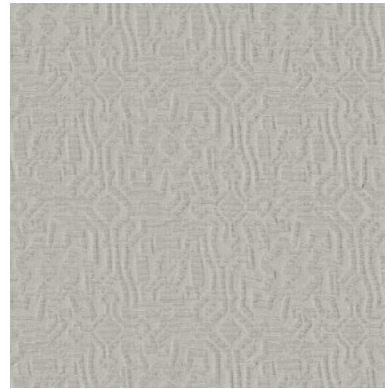
Ridgewood Teal

Ridgewood

A sea of infinitesimal squares form Ridgewood's broken chevron — an eye-catching delight. The simple pattern takes on a hint of complexity as it alternates, inviting the eye with its lustre.

Composition: 28% Nylon, 33% Cotton, 39% Polyester

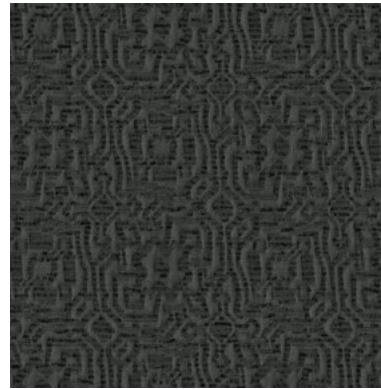
End Use: Cushions, Upholstery



Morrisville Smog



Morrisville Brownie



Morrisville Charcoal



Morrisville Chili



Morrisville Drizzle



Morrisville Ice



Morrisville Ink



Morrisville Mocha

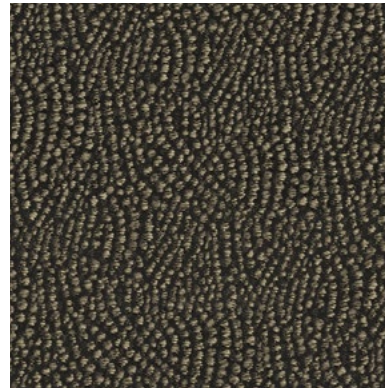


Morrisville Silver

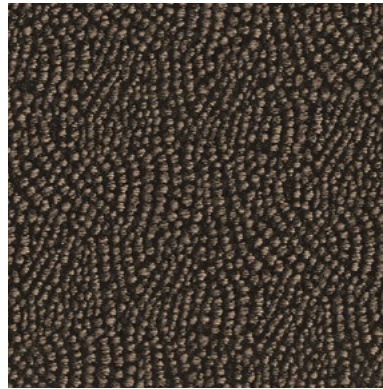
Morrisville

Surprisingly soft to the touch, Morrisville is a jacquard that gives the impression of an elaborate engraving. A medley of textures brings out the pattern in a single colour, making it a versatile choice for variety of aesthetics.

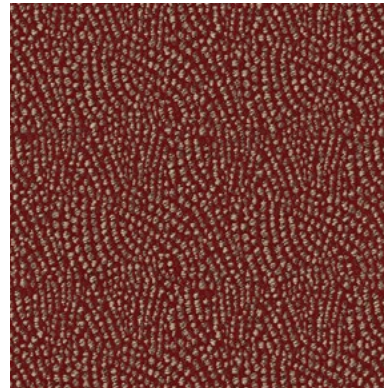
Composition: 27% Nylon, 23% Viscose, 32% Cotton, 18% Acrylic
End Use: Cushions, Upholstery



Williamsville Thunderstorm



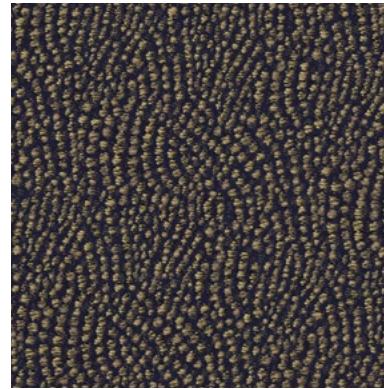
Williamsville Brownie



Williamsville Chili



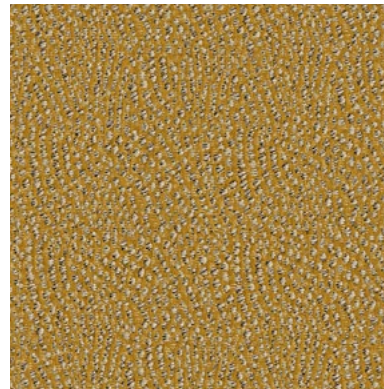
Williamsville Dove



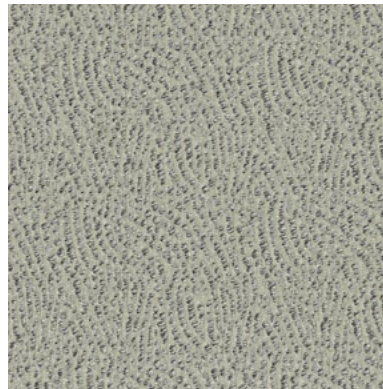
Williamsville Ink



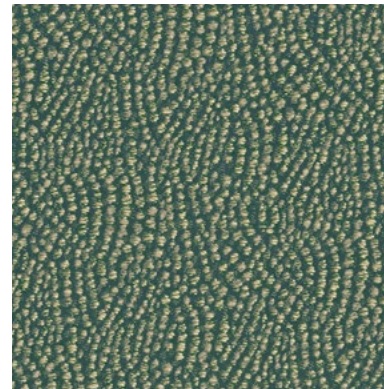
Williamsville Mocha



Williamsville Mustard



Williamsville Smog



Williamsville Teal

Williamsville

Williamsville's weave flows in curves; thick yarn intermingles with fine threads, giving the fabric a satisfying texture.

Composition: 22% Nylon, 40% Polyester, 38% Cotton

End Use: Cushions, Upholstery



Luxury Home Textiles

VAYA Home designs, curates and produces textiles for drapery and upholstery in a variety of fibers and tactile techniques.

Leveraging decades of textile design and production expertise, the Jaipuria Mill in collaboration with international creatives, conceived the VAYA Home brand to weave thoughtfully constructed fabrics for interior decorators globally.

Combining hand crafted arts with machine exacted techniques unique to the mill, the VAYA collections aim to delight and surprise through the use of pattern, materials, and colors in their textiles.

Our products are sold through leading retailers as cut length yardage and are suitable for residential and commercial application.

www.vayahome.com
sales@vayahome.com