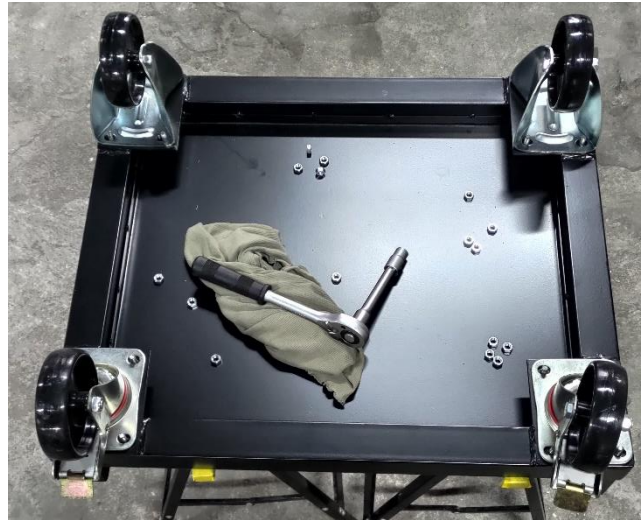




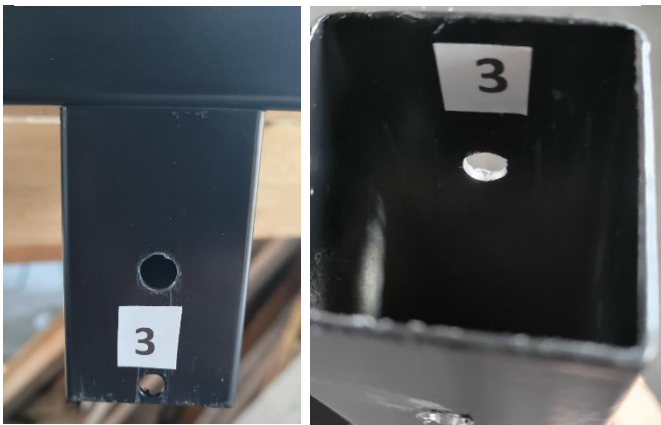
1 - Remove all the nuts from the bottom.



2 - Attach the 2 turning wheels in one side and 2 fixed wheels on the back. Tighten well the nuts.



3 - Connect the 4 legs following the numbers inside the legs. Please note the numbers must be on the same side.



4 - Insert the long screws with the nuts to another side and tighten well.



5 - Place the pizza oven on the top

SAFETY ADVICE



WE WOULD LIKE TO REMIND YOU THE INSTALLATION OF THE STAND REQUIRES A CERTAIN TECHICAL KNOWLEDGE OF THE ASSEMBLY METHODS

ASSEMBLE YOUR STAND.

AT LEAST TWO PEOPLE ARE REQUIRED TO ASSEMBLE THE STAND.

KEEP CHILDREN AND ANIMALS AWAY FROM THE WORK AREA, TO PREVENT INJURIES.

MAKE SURE YOU HAVE ENOUGH SPACE TO LAYOUT THE PARTS BEFORE STARTING.

XCLUSIVEDECOR LTD OR OUR VENTOR IS NOT RESPONSIBLE FOR ANY ACCIDENT OR DAMAGED PARTS IT CAN HAPPEN DURING THE STAND ASSEMBLY.

WARNING

MOVING THE PIZZA OVEN WITH THE STAND

MAKE SURE ONLY MOVE YOUR PIZZA OVEN ON THE STAND ON A SMOOTH AND LEVEL SURFACE WITHOUT ANY TRASH ON THE FLOOR THAT COULD BLOCK THE WHEELS AND TURN THE OVEN.

THE OVEN ON THE STAND SHOULD ALWAYS BE MOVED SLOWLY.

WHEN YOU MOVING YOUR OVEN KEEP CHILDREN AND ANIMALS AWAY FROM THE AREA, TO PREVENT INJURIES.

XCLUSIVEDECOR LTD OR OUR VENTOR IS NOT RESPONSIBLE FOR ANY ACCIDENT OR DAMAGED PARTS IT CAN HAPPEN WHEN YOU ARE MOVING THE OVEN.

XCLUSIVEDECOR LTD OR OUR DEALER (VENDOR) IS NOT LIABLE OR RESPONSIBLE FOR ANY ACCIDENT OR DAMAGES THAT MAY OCCUR DURING THE STAND ASSEMBLY OR WHEN THE OVEN IS IN USE.



ANY QUESTION? PLEASE CONTACT OUR EXPERT TEAM ON

WHATSAPP CUSTOMER SERVICE 7 DAYS WEEK: +44 789 565 5087



Pizza Ovens R-US exclusive representative of XclusiveDecor LTD in AUSTRALIA

Head Office 32 Ereton Drive Arundel 4214 | Phone: 0412 934 725

www.pizzaovensrus.com.au | info@pizzaovensrus.com.au

XCLUSIVEDECOR LIMITED

Office: Exchange House Centre, Exchange Street, Norfolk, NR17 2AB, UNITED KINGDOM

Phone: +44 (0) 161 408 0086 | Email: sales@xclusivedecor.com