



INSTALLING RA0930DC / RA0946DC

STEP 1

Unpack the Extension Duct Cover.

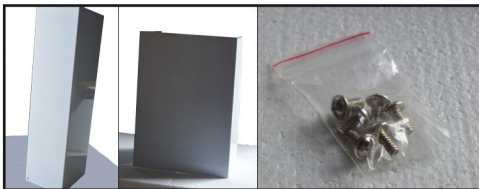


STEP 2

Check parts for installing the Extension Duct Cover.

- Extension Duct Cover x 1
- Duct Cover Mounting Bracket x 1
- Outer Duct Cover of RA092DC-1 x 1
- Screw Package x 1 (included 6 screws)

** Extension Duct Cover box includes Extension Duct Cover; Range Hood box includes standard duct cover RA092DC-1, Duct Cover Mounting Bracket, and Screw Package.*



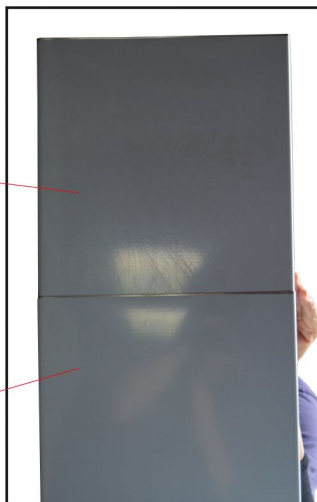
STEP 3

Take out the Inner Duct Cover and keep the Outer Duct from standard duct cover RA092DC-1. Then peel of protective film.

Duct Cover Model: RA092DC-1

inner Duct Cover, take this out

outer Duct Cover, keep this one



STEP 4

Place and align the outer Duct Cover on top of the hood. Use 4 screws (2 on each side) to secure it.



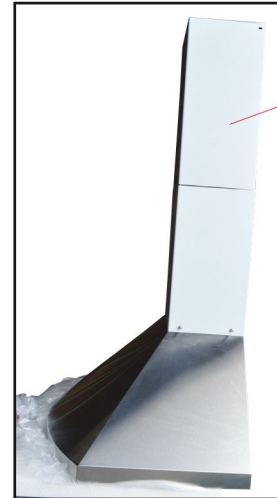
STEP 5

Peel of protective film of Extension Duct Cover and insert it into Original Outer Duct Cover.



STEP 6

Pull down the Extension Duct Cover to adjust the height that you want.



pull down to adjust the height.

STEP 7

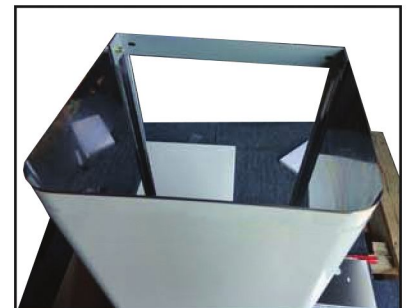
Measure the desired height for the Duct Cover and secure the Duct Cover Mounting Bracket to the wall. (Screws not provided)



screws not provided

STEP 8

Use screws (provided) on each side to secure the Extension Duct Cover to the Duct Cover Mounting Bracket.



KOBE Range Hoods
11775 Clark Street
Arcadia, CA 91006
Tel: 626.775.8880 / Fax: 626.775.8885
www.koberangehoods.com