



# KOBE Range Hoods

*"So Quiet...You Won't Believe It's On!"*

## LED "C" Conversion Kit: Installation Manual

*This guide is to show the components of LED "C" Conversion Kit and how it is installed.*

### Part 1: Parts Required to Replace Halogen Lamps with LED Lights



Figure 1: LED Driver - 4 pcs



Figure 2: LED Driver - 1 pc

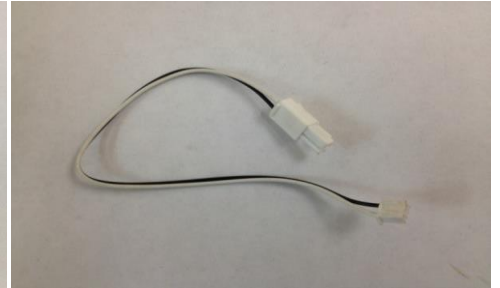


Figure 3: LED Light Primary Connection Wire (120V) - 1 pc



Figure 4: LED Light Secondary Connection Wire - 4 pcs



Figure 5: Screw - 4 pcs

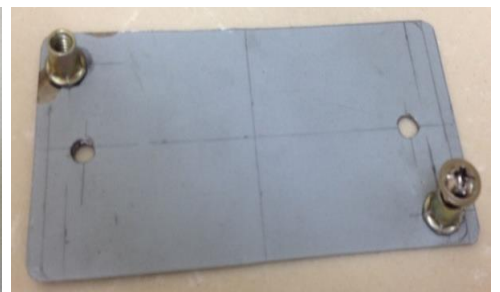
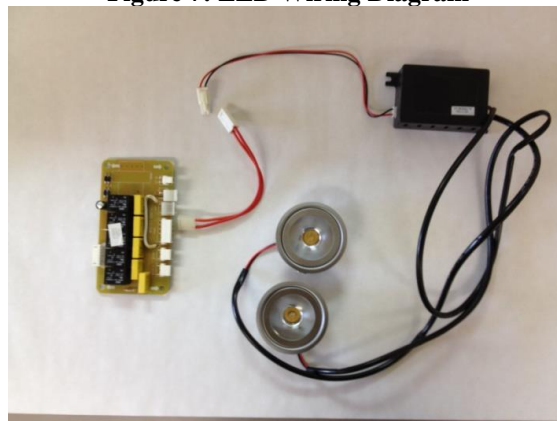


Figure 6: 'C Type' LED Driver Support - 1 pc

### Part 2: Installation

Models with 4 lights: IS2336, IS2342SQ

Figure 7: LED Wiring Diagram





# KOBE Range Hoods

*"So Quiet...You Won't Believe It's On!"*

## 2.1 Installation Instruction

- A. Disconnect the power supply, remove the six screws at the bottom of the island range hood then remove the cover plate and open the hood.
- B. Find the halogen lamp transformers (see figure 8) from the transformer locations (see figure 9).

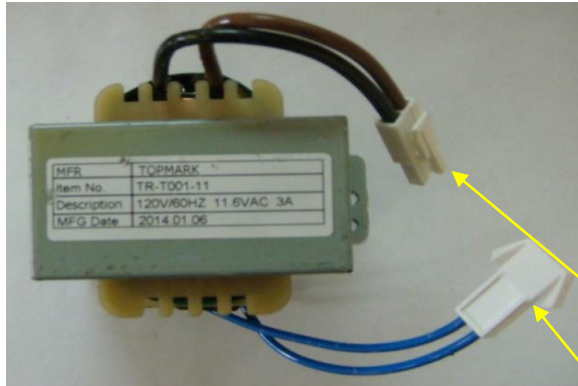


Figure 8: Halogen Lamp Transformers

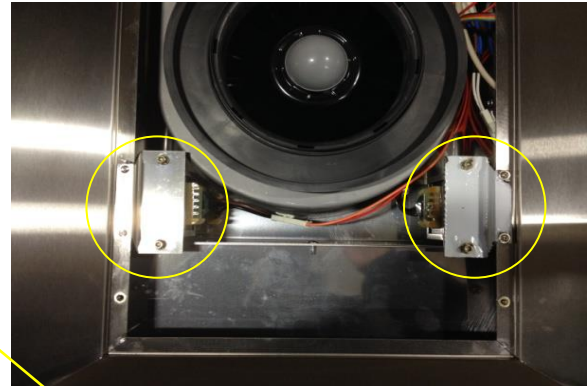


Figure 9: Transformer Locations

- C. Disconnect the transformer connector for the lamps and power. Remove the transformer along with mounting plate.
- D. Mount LED driver onto the bracket (see figure 10).



Figure 10: Driver Mounted on the Bracket

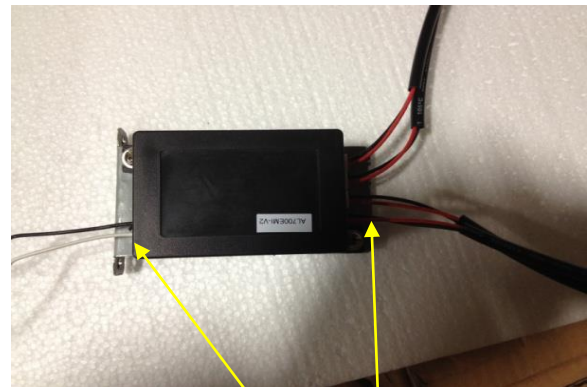
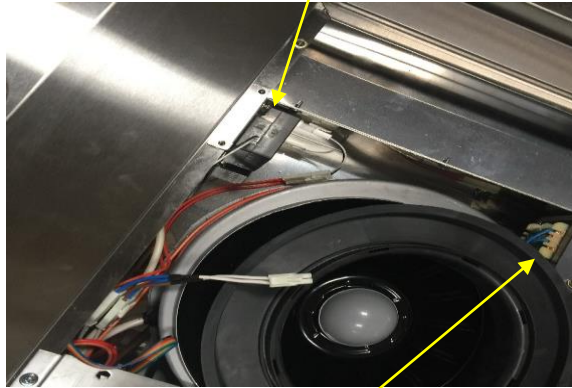


Figure 11: Driver Wiring

Note: On figure 11, the end with four wires connected will be called the “secondary side”. Connect these wires to the LED light. On the other end, there is only one wire connected; this wire will be connected to the 120V on the processor board. This end will be called the “primary side”.

- E. Place LED light driver on the location where original transformers was. Initially, there were two halogen lamp transformers. After converting to LED lights, there should be one LED light driver only. The driver should be mounted on the original transformer spot (which is closer to the circuit board).



**Figure 12: LED Driver Mounted**

Note: You can choose to remove the second transformer or leave it there.

- F. To remove the halogen light housing, push it from inside out. Then remove the halogen light and wire from the unit.



**Figure 13a: Push the Halogen Lamp Inside Out**



**Figure 13b: Alternate Lamp Removal**





## KOBE Range Hoods

*"So Quiet...You Won't Believe It's On!"*

G. The primary side of the driver (120V) will be connected to the circuit board (see figure 14).

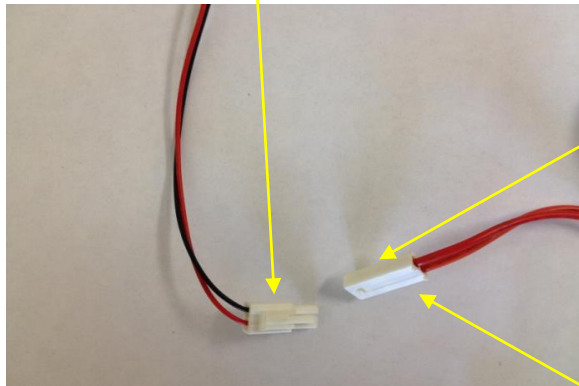


Figure 14: Connect the Power Wire to the LED Driver

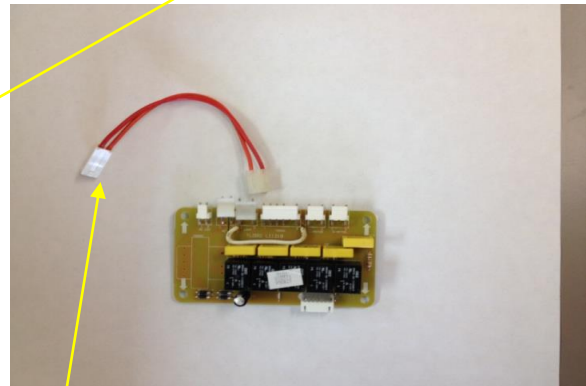


Figure 15: Wire to the Circuit Board

Note: The connector can be found inside the hood. This was removed from the halogen lamp transformer.

H. The driver's secondary side has four jacks. Plug in the range hood lights' wire into the jack.



Figure 16: Connect All Wires to the LED Lights

I. Connect the wire to the LED light through the hole. Pull the LED wire from inside out. Push in the LED lights into place and the installation is complete.



Figure 17: Connect Wire into the LED Light Socket



Figure 18: Connect Wire into the LED Light Socket