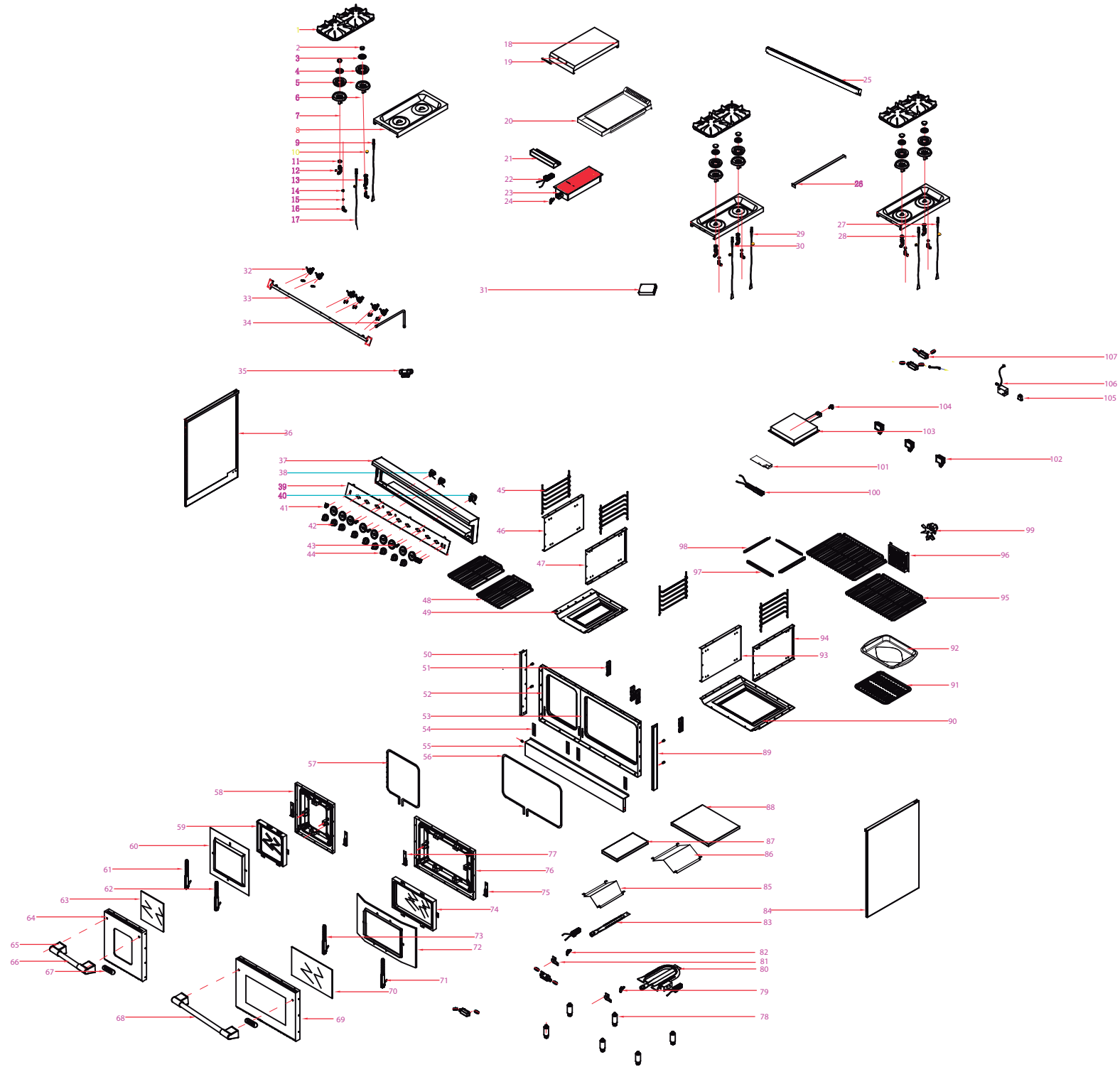


SUPPORT I GAS RANGE KRG4804U



APPLICABLE MODEL: KRG4804U



SUPPORT I GAS RANGE
KRG4804U



	Item NO.	Drawing
cooking grate	13.01.0023-A0	1
Burner Cap(12000BTU)	10.01.0020-A0	2
Flame Ring(12000BTU)	10.01.0021-A0	3
Flame Ring Base(12000BTU)	10.01.0022-A0	4
Bottom Cup(12000BTU)	10.01.0023-A0	5
Drip Pan	04.01.0562-A0	8
Manifold B	11.03.0079-A0	9
Manifold A	11.03.0043-A0	10
Regulator	09.03.0010-A0	11
18"Oven Ceiling	04.01.0505-A0	12
Side Panel,Left	20.02.0061-A0	13
Oven Floor Cover	20.06.0055-A1	14
Control Panel Supporter	20.01.0090-A0	15
Control Panel	04.02.0549-A1	16
18"Oven Side Panel,Left	04.06.0301-A0	17
main top burner knob	22.99.0039-A0	18
oven knob	22.99.0040-A0	19
Indictor	07.10.0059-A0	20
Switch	07.02.0033-A0	21
Cooking Grid	13.03.0020-A0	22
18"Stainless Steel Door Frame	04.01.0774-A0	23
18"Porcelain Door Frame	04.06.0304-A0	
Kick Panel	20.02.0136-A0	24
30"Gasket	11.05.0012-A0	25
18"Gasket	11.05.0034-A0	26
18" Door Hinge,Left	05.03.0030-A0	27
Oven Window	22.99.0031-A0	28
18" Door Hinge,Right	05.03.0031-A0	29
18"Gray Glass	15.01.0005-A0	30
18" Door Frame, Outer	20.02.0137-A0	31
18" Door Handle	12.01.0019-A0	32
30" Door Frame, Outer	20.02.0074-A0	33
Door Handle Support, Left	12.02.0012-A0	34
30" Door Handle	12.01.0011-A0	35
Door Handle Support, Right	12.02.0013-A0	36
Kucht Logo	08.03.0011-A0	37
Griddle Cover	20.01.0123-A0	38
Griddle Cover Handle	12.03.0005-A0	39
Griddle	20.99.0026-A2	40
Grease Tray	20.01.0131-A0	41
Infrared Burner	10.03.0018-A0	42

APPLICABLE MODEL: KRG4804U

Griddle Orifice Assembly	22.99.0037-A0	43
Igniter	07.07.0049-A0	44
Griddle Thermostat	07.12.0017-A0	45
Oven Thermostat	07.12.0005-A0	46
30" Door Hinge,Left	05.03.0015-A0	47
30" Door Hinge,Right	05.03.0016-A0	48
30" Oven Window	22.99.0006-A0	49
30" Gray Glass	15.01.0002-A0	50
Inner Burner Head	10.01.0065-A0	51
Inner Burner Head	10.01.0066-A0	52
Outer Burner Head	10.01.0067-A0	53
Outer Burner Base	10.01.0068-A1	54
Burner Supporter Pipe	10.04.0069-A0	114
Broil Orifice Assembly	22.99.0036-A0	57
Broiler Igniter	07.01.0054-A0	58
Infrared Broiler	10.03.0017-A0	59
Island Trim	20.01.0091-A0	60
Relay	07.08.0010-A0	61
plug	07.06.0008-A0	62
oven back panel	20.06.0056-A1	63
Fan Cover	04.01.0463-A1	64
30"oven floor cover	20.06.0036-A0	65
Oven rack	13.03.0012-A2	66
Oven rack supporter	13.03.0019-A0	67
Broil Pan Cover	04.06.0077-A1	68
Broil Pan	04.06.0078-A1	69
oven side panel	04.06.0302-A0	70
Hinge Receiver	05.03.0017-A0	71
Side Panel,Right	20.02.0062-A0	72
Tube Burner	10.02.0035-A0	73
igniter hot surface, oven	07.01.0053-A0	74
Adjustable Leg	22.99.0005-A0	75
		76
Tube Burner Orifice Assembly	22.99.0038-A0	77
Safety Valve	09.04.0006-A0	78
U-shape Burner Orifice Assembly	22.99.0035-A0	79
Convection Fan	07.03.0006-A0	80

U-Shape Burner	10.02.0016-A1	81
Aluminium pipe	11.01.0002-A0	82
Aluminium pipe	11.02.0033-A1	83
Aluminium pipe	11.02.0086-A0	84
Aluminium pipe	11.02.0088-A0	85
Aluminium pipe	11.02.0084-A0	86
Aluminium pipe	11.02.0088-A0	87
Aluminium pipe	11.02.0088-A0	88
Aluminium pipe	11.02.0082-A0	89
Aluminium pipe	11.01.0092-A0	90
Aluminium pipe	11.01.0002-A0	91
Main Jet Holder	22.99.0015-A0	92
Simmer Jet Holder	22.99.0073-A0	93
Aluminium pipe	11.02.0038-A0	94
Drip Pan Trim	04.02.0312-A1	95
Aluminium pipe	11.02.0037-A0	96
Aluminium pipe	11.02.0040-A0	97
Aluminium pipe	11.02.0035-A0	98
12000BTU Single Valve	09.01.0007-A0	99
15000BTU Main burner valve	09.01.0020-A0	100
Oven Lamp	07.04.0117-A0	101
4804 LP KIT	21.99.0022-A0	102
30" Door Frame,Inner	20.06.0013-A0	103
18" Door Frame,Inner	20.06.0054-A0	104
30"Flame Tamer	04.03.0447-A1	105
18"Flame Tamer	04.03.0332-A0	106
18"oven side panel, right	04.06.0441-A0	107

30"oven side panel, left	04.06.0442-A0	108
30" stainless steel door frame	04.01.0775-A0	109
Knob Bezel	14.04.0009-A0	113