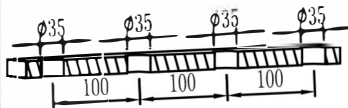
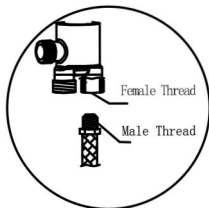
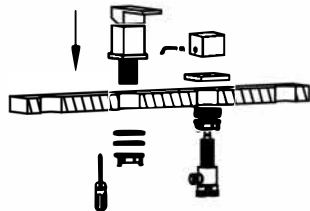


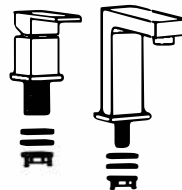
Four Holes Faucet



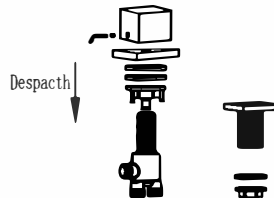
1. Hole: 35mm, Distance: 100mm



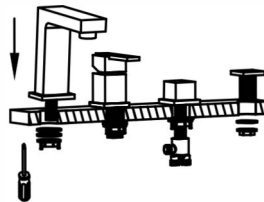
4. Fixed the switch and fasten the nut. Fix the converter handle by the hexagonal tool.



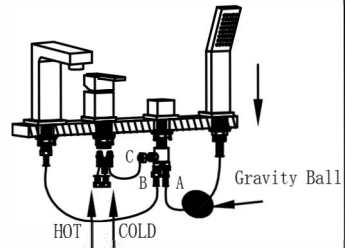
2. Despatch the parts



3. Take apart the handle and base by the hexagonal screwdriver. Take apart the nut and gasket of the shower holder.



5. Fixed and fasten the water nozzle and shower holder.



6. Pulling pipe connect with the conversion A through the shower holder. Gravity ball fixed on the top of the pull out pipe. Water nozzle connect to the conversion B, switch water outlet connect to the connector C and finally contact to the hot and cold water hose.