

Tomfaucet

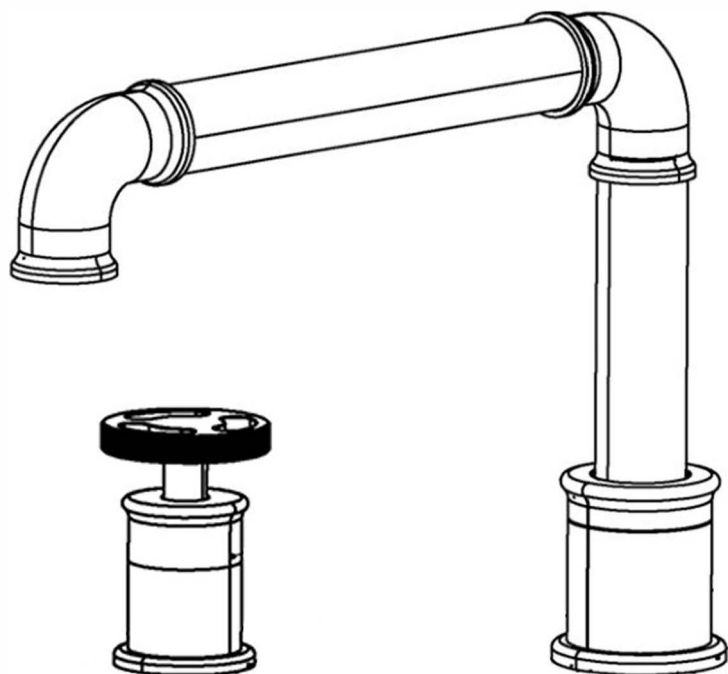
User's Manual



RB0986

INSTALLATION INSTRUCTIONS

Installation Manual



IAPMO RESEARCH AND TESTING, INC.
5001 East Philadelphia Street, Ontario, California 91761-2816 • (909) 472-4100 Fax (909) 472-4244 • www.iapmo.org

ANSI **IAPMO R&T** **UPC**

CERTIFICATE OF LISTING

Effective Date: August 2013 Void After: August 2014
Product: Plumbing Fixtures Fittings File No. 9737
Issued To: Haising Water Cartridge Co., Ltd.
No. 21 Haising Road,
Shenzhen Town,
Guangdong City, GUANGDONG
China

Identification: Plumbing supply fittings complying with this Standard shall be marked with the manufacturer's recognized name, trademark, or other mark as, in the case of private labeling, the name, trademark or other mark of the customer for whom the fitting was manufactured. The marking shall be accomplished by use of a permanent mark as by placing a permanent label on the product. Markings on plumbing supply fittings shall be visible after installation.

Characteristics: Single-handle, single-control, and automatic compensating mixing bath and shower valves shall have identifiable temperature control settings in which the settings are indicated by words ("cold", "warm", "hot", etc.), by numbers, or graphically.

Products: Products shall be marked with the manufacturer's name, trademark, or other mark as well as the model number, in the case of private labeling, the name, trademark or other mark of the customer for whom the fitting was manufactured as well as the model number.

Signatures: David McHenry, CEO, The IAPMO Group; Ren Chang, CEO, The IAPMO Group

Seal: IAPMO RESEARCH AND TESTING, INC. CERTIFICATE OF LISTING

IAPMO RESEARCH AND TESTING, INC.
5001 East Philadelphia Street, Ontario, California 91761-2816 • (909) 472-4100 Fax (909) 472-4244 • www.iapmo.org

ANSI **IAPMO R&T** **UPC**

CERTIFICATE OF LISTING

Effective Date: October 2013 Void After: October 2017
Product: Flexible Water Connectors File No. 4500
Issued To: Tuhuan Jianglin Plumbing Hose & Parts Co., Ltd.
Foshan Shajiyu Zone
Tuhuan County
Guangdong 517480, China

Identification: Manufacturer's name as trademark and UPC identification mark. Special use label "Flex" with notes in legend (optional only).

Characteristics: Flexible water connectors manufactured in various sizes, lengths and metal and fittings for hot or cold water applications that comply with the code, which may or may not have an outer braided cover. Connectors are to be installed for use in accessible locations only and in accordance with the manufacturer's instruction, and the latest edition of the Uniform Plumbing Code.

Products: Products listed on this certificate have been tested by an IAPMO R&T recognized laboratory. This recognition has been granted based upon the laboratory's compliance with the applicable requirements of ISO/IEC 17025.

Products: Products are in compliance with the following code(s):
Uniform Plumbing Code (UPC)

Signatures: David McHenry, CEO, The IAPMO Group; Ren Chang, CEO, The IAPMO Group

Seal: IAPMO RESEARCH AND TESTING, INC. CERTIFICATE OF LISTING

IAPMO RESEARCH AND TESTING, INC.
5001 East Philadelphia Street, Ontario, California 91761-2816 • (909) 472-4100 Fax (909) 472-4244 • www.iapmo.org

ANSI **IAPMO R&T** **UPC**

CERTIFICATE OF LISTING

Effective Date: November 2014 Void After: November 2017
Product: Plumbing Fixtures Fittings File No. 9737
Issued To: Haising Water Cartridge Co., Ltd.
No. 21 Haising Road,
Shenzhen Town,
Guangdong City, GUANGDONG
China

Identification: Each fitting component shall bear permanent legible markings to identify the manufacturer. This marking shall be the trade name, trademark, or other mark known to identify the manufacturer. The product shall also bear all other markings required by the manufacturer. The marking shall be located where it can be read after installation is complete. The product or packaging shall also bear the UPC identification mark.

Characteristics: Plumbing fixture fittings components to be installed in accordance with the manufacturer's instructions and the requirements of the latest edition of the Uniform Plumbing Code.

Products: Products listed on this certificate have been tested by an IAPMO R&T recognized laboratory. This recognition has been granted based upon the laboratory's compliance with the applicable requirements of ISO/IEC 17025.

Products: Products are in compliance with the following code(s):
Uniform Plumbing Code (UPC)
National Plumbing Code of Canada

Signatures: David McHenry, CEO, The IAPMO Group; Ren Chang, CEO, The IAPMO Group

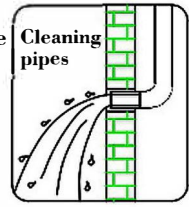
Seal: IAPMO RESEARCH AND TESTING, INC. CERTIFICATE OF LISTING

INSTALLATION STEPS

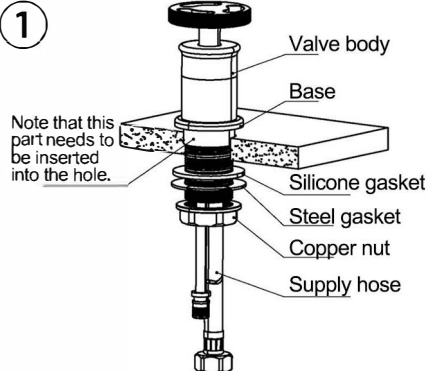
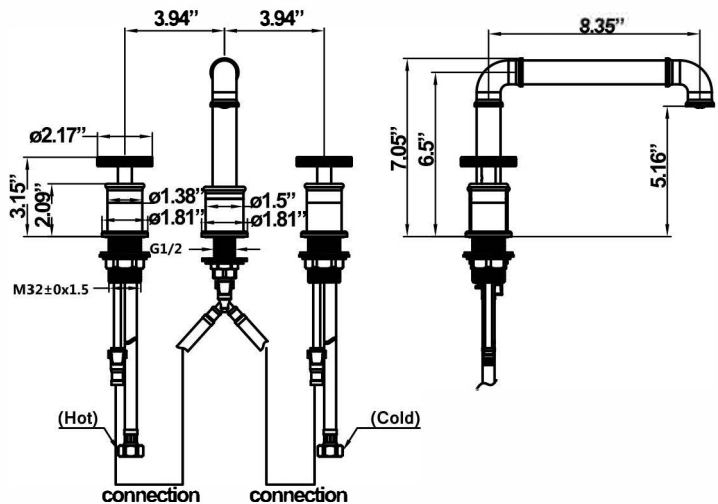
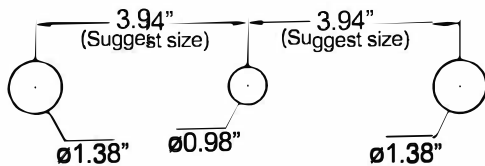
This product has been inspected and debugged by the factory to the best condition. Please do not disassemble and assemble it yourself.



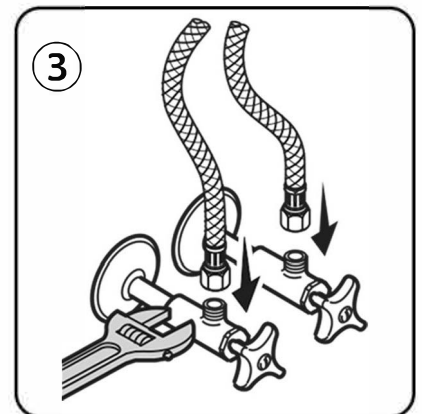
Before installing the faucet, please be sure to remove sundries and sludge from the water pipe to prevent sundries from blocking the faucet.



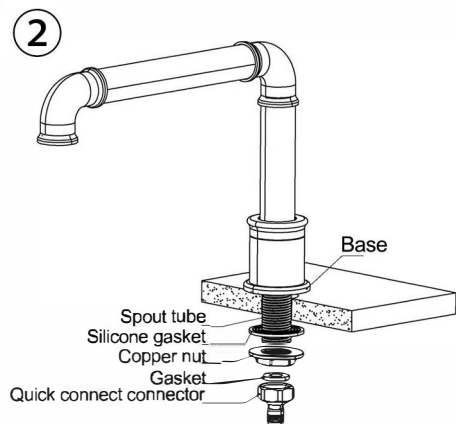
Drill holes according to the size shown



Install the valve body package (Pic 1):
1. Remove the copper nut and washer, leave the spout tube and O-ring on the main body, insert the tooth tube into the hole of the kitchen basin, install the washer and nut from the bottom; tighten the nut, tighten the screw to install the water inlet hose.



Install hot and cold water pipes (Pic 3):
1. Connect the hose to the water supply line and pay attention to the direction of the cold and hot water



Install the spout package (Pic 2):
1. Remove the copper nut and gasket on the spout tube.
2. As shown in the figure, insert the dental tube into the hole from the upper part of the basin, so that the base is close to the upper surface of the basin, and be careful not to lose the O-ring of the base.
3. Install the rubber washer and copper nut on the tooth tube, tighten the copper nut.
4. Put the small washer into the quick connect connector, and then install the connector on the dental tube port.
5. Refer to the hose connection diagram to connect the hose and install the hot and cold angle valve connector.

CLEANING CARE

In order to keep the appearance of faucet clean, bright and good performance, please take care of the faucet as follows:

1. Rinse with water only and dry with soft cotton cloth;
2. Use mild liquid and colorless glass cleaner to remove surface dirt and scale film, or use polish without abrasive effect;
3. Do not use abrasive detergent, polish, emery cloth, paper towel or scraper, etc.;
4. Do not use acid cleaner, or cleaner and soap with insoluble gran etc.;
5. In the process of use, mud may accumulate in the bubbler and make the water flow show, The bubbler can be unscrewed, rinsed with water, and then installed back in place.





Tomfaucet

Match Your Ideal Bathroom & Kitchen

www.tomfaucet.com