



Specifications

Net Weight	18 kg	39 lbs
Length	777 mm	31 in
Bore	43 mm	1.6875 in
Stroke	70 mm	2.75 in
Blows per minute	1800	1800
Chuck Sizes	22 x 83 mm	7/8 x 3 1/4 in
	25x108 mm	1 x 4 1/4 in
Air Inlet (NPT)	10 mm	3/8 in
Air Consumption*	1.4 m ³ /m	49 cfm
	*estimated	

FOR OPTIMUM PERFORMANCE, DO NOT OPERATE TOOL ABOVE 90 PSI (6 BAR) WORKING PRESSURE.

WARNING:

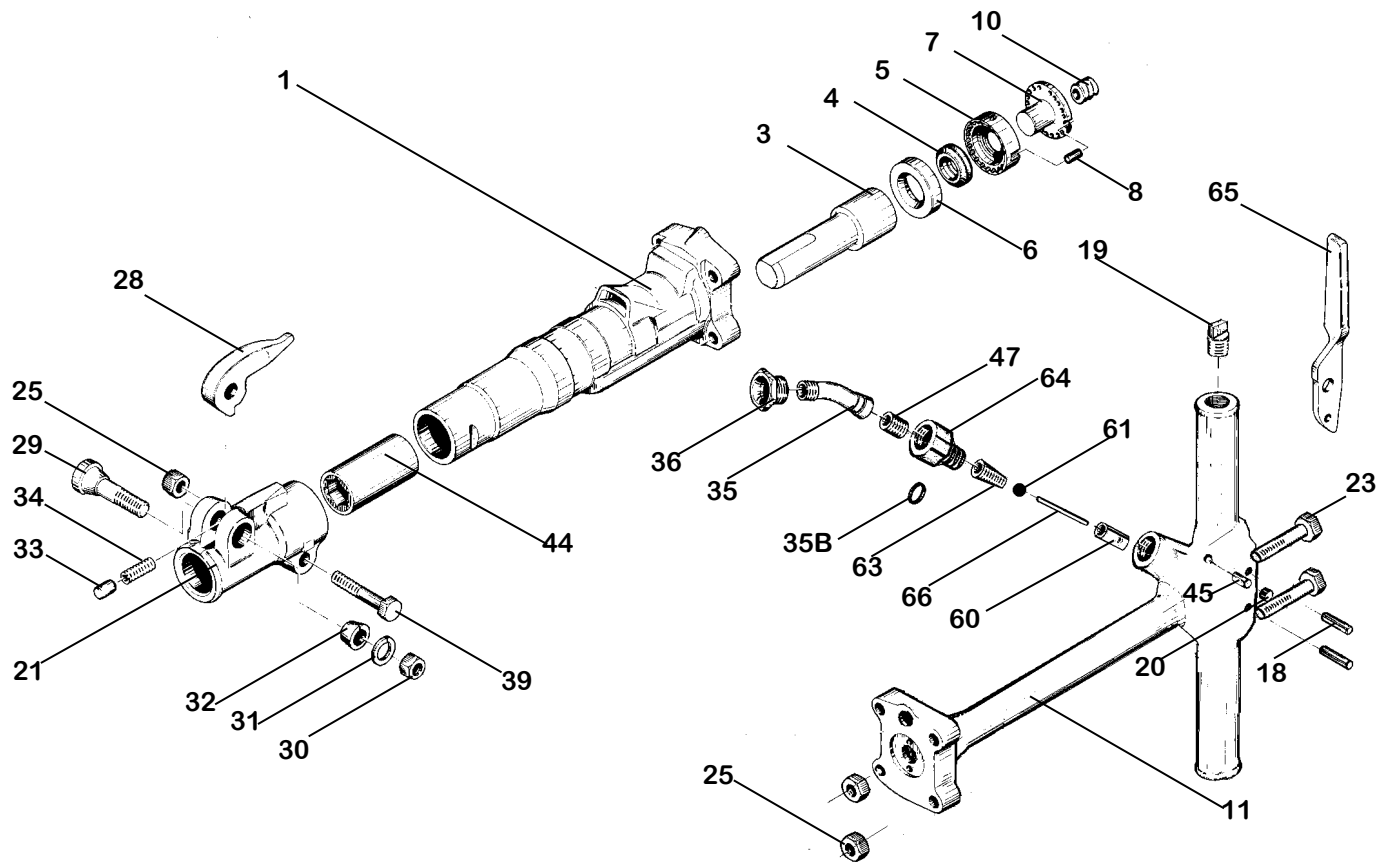
ALWAYS DISCONNECT THE AIR SUPPLY BEFORE CHANGING CHISELS OR DISMANTLING THE TOOL FOR SERVICE OR REPAIR. FOR MAXIMUM SAFETY WE ADVISE THE INSTALLATION OF A SHUT-OFF VALVE AT THE END OF THE AIR LINE.

DO NOT EXCEED 100 PSI (7BAR) WORKING PRESSURE.

TRENCH DIGGER

30 lb class

KT-TD30



INDEX	PART	DESCRIPTION	INDEX	PART	DESCRIPTION
1	KT6301	CYLINDER	30	KT6625	RETAINER BOLT NUT
3	KT6303	PISTON	31	KT6624	RETAINER LOCK WASHER
4	KT6304	AUTOMATIC VALVE	32	KT6332	RETAINER BOLT BUSHING
5	KT6305	VALVE CHEST	33	KT6333	RETAINER PLUNGER
6	KT6306	VALVE SEAT	34	KT6334	RETAINER PLUNGER SPRING
7	KT6307	VALVE GUIDE	35	KT6335	AIR INLET SWIVEL
8	KT6308	VALVE DOWEL	36	KT6336	AIR INLET SWIVEL NUT
10	KT6310	BACKHEAD SPRING	38	KT6338	AIR INLET SCREEN
11	KT6311T	BACKHEAD (INCL.#6615)	39	KT6339	FRONTHEAD BOLT
NS	KT6311TC	BACKHEAD COMPLETE	44	KT6344A	CHUCK BUSHING 1" x 4 1/4" HEX
18	KT6618	THROTTLE LEVER PIN		KT6344B	CHUCK BUSHING 7/8" x 1/4" HEX
19	KT6019	OIL PLUG	45	KT6645	OIL CONTROL FELT
20	KT6620	OIL CONTROL PLUG	46	KT6346	INLET SWIVEL O-RING
21	KT6321	FRONTHEAD	47	KT6347	INLET SWIVEL SPRING
NS	KT6321C	FRONTHEAD COMPLETE	60	KT6360	PUSH PIN BUSHING
23	KT6323	BACKHEAD BOLT (4)	61	KT6361	THROTTLE BALL
24	KT6324	BOLT WASHER	NS	KT6362	MUFFLER
25	KT6325	BOLT NUT (5)	63	KT6363	THROTTLE VALVE SPRING
28	KT6328	STEEL RETAINER (FORGED)	64	KT6364	AIR INLET SPUD
29	KT6329	RETAINER BOLT	65	KT6365	THROTTLE LEVER
			66	KT6366	PUSH PIN