



Alen BreatheSmart FLEX HEPA Air Purifier

USER MANUAL



We would love to hear from you. If you have any questions, please
contact us at **1(800) 630-2396** or email **service@alen.com**.

TABLE OF CONTENTS

Air Purifier Safety 3

Using Your Air Purifier 4
Operating Your Unit
Identification Of Parts

Know Your Air Purifier 6

Care & Maintenance 6
Replacing The Filter
Why You Should Replace Your Filter
Alen’s Filter Subscription Program
How To Replace The Filter

Troubleshooting Tips 9

Warranty Information 10



The 8 hr TWA Ozone for this product is 0.001 ppmv when tested in a 30 m3 chamber. Refer to safety instructions in manual for more information. See back of unit for rating label and regulatory markings.

AIR PURIFIER SAFETY

This manual provides important safety messages regarding your electrical home appliance. Always read, follow, and, save all safety directions.

Location Requirements

- Use a level surface at least 6" (15.2cm) from heat sources such as ranges, dryers, or heaters.
- Do not block air vent openings.
- Never insert fingers or foreign objects into air vents.
- Do not place air purifier on a soft or unstable surface such as a bed or sofa.
- Do not use in a window.
- Do not use next to a source of heat such as a range, heater, or dryer.
- Do not use near any source of water such as a sink, bath, shower, or swimming pool.
- Operate indoors only.

Electrical and Safety Requirements — Reduce the risk of fire or electric shock.

Failure to follow these instructions can result in property damage, injury, or death.




- Do not connect unit to any electrical socket that is damaged.
- Do not plug the air purifier into an outlet controlled by a dimmer switch.
- Do not insert or pull out plug with wet hands, it may cause electric shock.
- Do not use an adapter. Do not use an extension cord.
- Use only in the proper electrical socket type. Socket type (voltage & hertz) can be found on the unit's back panel label. Incorrect socket use can damage/destroy the unit.
- Do not exceed the rating of the power outlet or connection device. May cause electric shock or fire due to excess heat generation.
- Never try to take apart or repair the unit by yourself.
- Disconnect power immediately if you notice strange sounds, smells, or smoke.
- Change your filter at the recommended interval to avoid particle and dust buildup.
- Ensure filter is correctly installed before turning on unit. Do not run unit without a filter.
- Do not cover the unit or impede airflow.
- Do not drop the unit, as this can result in damage.
- Do not place heavy objects on the power cord and be sure the cord is not compressed as there is danger of fire or electric shock.
- Do not spray insecticides or any other flammable sprays near the unit. It may cause explosion or fire.
- **WARNING!** To reduce the risk of electric shock, this equipment has a polarized plug (one blade is wider than the other). This plug will fit in a polarized outlet only one way. If the plug does not fit fully in the outlet, reverse the plug. If it still does not fit, contact qualified personnel to install the proper outlet. Do not alter the plug in any way.

USING YOUR AIR PURIFIER

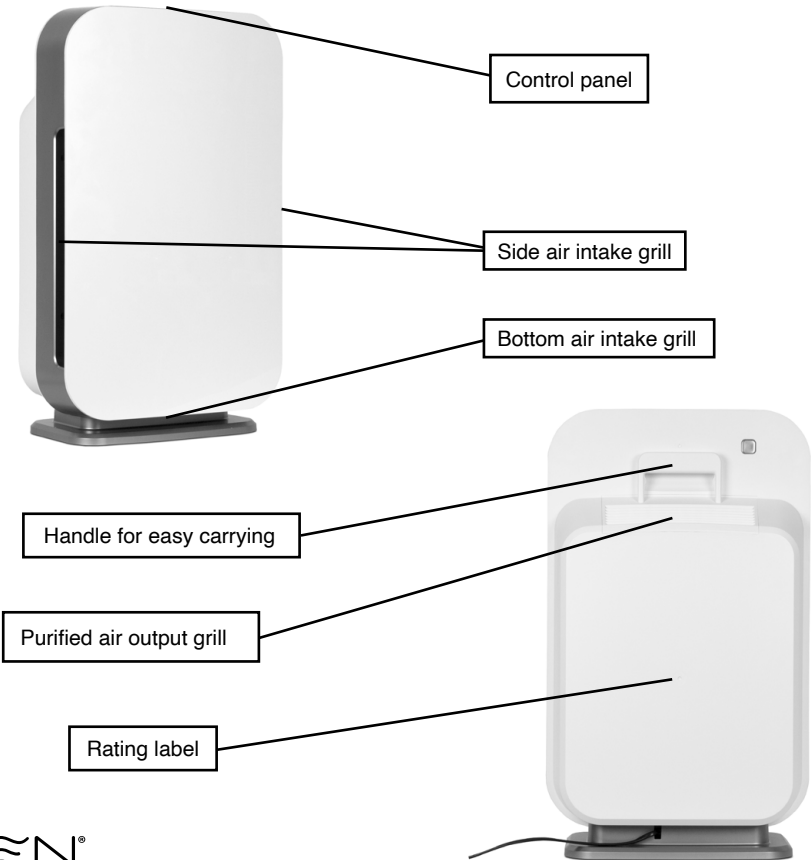
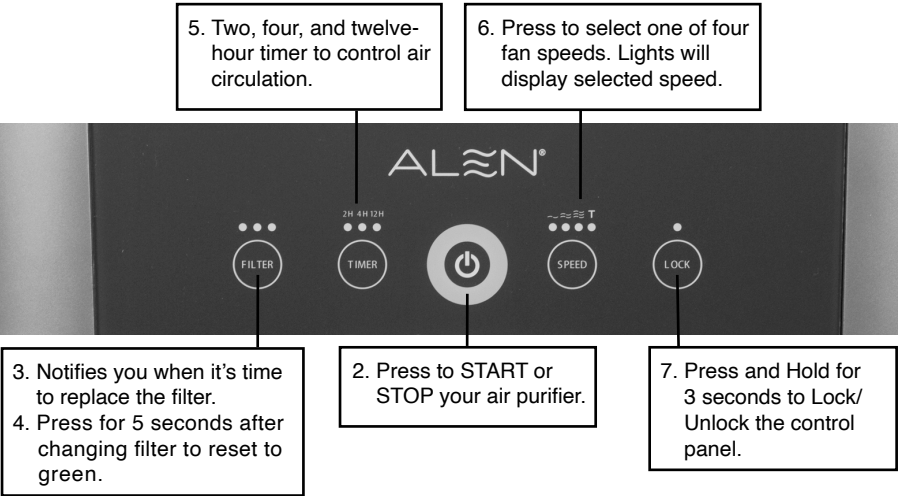
PLEASE NOTE:

The BreatheSmart FLEX has a capacitive touch panel. The buttons only operate with a quick, light touch. Holding the buttons down will not activate the controls properly. A chime will indicate that the control has registered your touch.

Operating Your Unit:

1. Plug your air purifier into a grounded outlet.
2. Press  Power Button in the center to start the air purifier. When your unit is on, the lights will light up. To turn off the lights on your unit, press the  Power Button. To turn off the air purifier, press the  Power Button again after the lights have turned off.
3. FILTER Indicator — The Filter indicator has 3 lights: Green, Yellow, and Red. The Green light will be illuminated for most of the life of the filter. The Yellow light will come on shortly before your filter should be replaced. This is the ideal time to order a new filter. The Red light will be illuminated when it is time to replace the filter.
4. After changing the filter, hold the FILTER button down for 5 seconds. The Red light will be reset to Green.
5. Press TIMER to have the air purifier run for a set amount of hours (either 2, 4 or 12) before turning off.
6. Press SPEED and watch the indicator lights until desired fan speed is achieved. Most users prefer to use the air purifier on speed 2 or 3 to balance cleaning speed and noise. If you suspect the air is particularly dirty, you should set the speed to T (Turbo).
7. Press and Hold LOCK for 3 seconds to Lock/Unlock the Control Panel.

Identification of Parts (numbers correspond with directions on previous page):



KNOW YOUR AIR PURIFIER



When using the air purifier for the first time in a room, we recommend using a higher fan speed, such as speed three (3) or Turbo (T), for at least two hours to clean the room's air initially. Then, we recommend running the air purifier continuously in Auto mode or on speeds two (2) or three (3).

Features

- True HEPA filtration captures dust, allergens and airborne pollutants
- 4 fan speeds with a 2, 4, & 12-hour timer to control air circulation
- Filter change indicator light keeps replacements on schedule
- Simple and intuitive touch controls
- Auto-off safety feature when front cover is removed
- Filter designed for easy replacement

CARE & MAINTENANCE

Turn The Lights Off/On

To turn the lights off on your unit, press the  Power Button. The lights will go out but the unit will not turn off. Press any button to turn the lights back on, or press the  Power Button a 2nd time to turn the unit off completely.

Replacing The Filter

The Filter Indicator has 3 lights: Green, Yellow, and Red. The Green light will be illuminated for most of the life of the filter. Yellow light will come on shortly before your filter should be replaced. This is the ideal time to order a new filter. You may order a new filter at www.alen.com/filters or by calling 1-800-630-2396. The Red light will illuminate when it is time to replace the filter.

The filters used in Alen Air Purifiers are not designed to be washed, cleaned, or otherwise reused. Over time, the filters become overloaded with particles, decreasing their filtration performance. We recommend regular filter replacements to extend the life of your air purifier and maximize performance.

The black mesh layer of the filter, known as the prefilter, captures large dust and hair. This layer is held on with Velcro®-like strips. Once removed, the prefilter can be vacuumed to maintain efficient operation of the unit.

Reset the Filter Indicator

After replacing the filter, hold the FILTER button down for 5 seconds. The Red light will be reset to Green.

Why You Should Replace Your Filter

- You purchased an Alen Air Purifier to improve the quality of your indoor air.
- Changing your filters on time is the only way to maintain an optimal level of air quality.
- Excessively dirty filters can compromise the level of clean air your air purifier can provide.

ALLEN'S FILTER SUBSCRIPTION PLAN — Pure Air Made Simple

Regular replacement of your filter will extend the life of your air purifier and keep your air clean. Alen filters provide efficient filtration for 9 to 12 months depending on usage and conditions. With Alen's convenient Filter Subscription Plan, your filters will be shipped right to your door, exactly when needed.

Savings — Save 10% over retail and get FREE SHIPPING on every filter.

Convenience — Choose your desired shipping frequency and never run out of filters.

Superior Coverage — Alen's exclusive Forever Guarantee begins when you complete Product Registration and activate your Filter Subscription.

To get started, simply visit www.alen.com/activate or call 1-800-630-2396.

How To Replace The Filter

1. Always unplug the unit when installing a filter.
2. Distinguish the front side from the back side of the filter. The front side has a black mesh prefilter attached with Velcro®-like strips.
3. Place the used filter in a plastic bag to prevent dust from re-entering the air.



1. With the unit standing upright, pull firmly on the cover near the intake vents with one or both hands to release the magnets.

2. After pulling the cover out, lift it away from the unit.



3. Remove the used filter by pulling out on the pull strings. Place the used filter in a plastic bag to prevent dust from re-entering the air.

4. Take the new filter out of the plastic bag and insert it into the air cleaner with the pull strings facing outward.

5. Insert the top tabs of the front cover first and then the lower part of the cover will snap into place.



WARNING! RISK OF ELECTRIC SHOCK - These servicing instructions are for use by qualified personnel only. To reduce the risk of electric shock, do not perform any servicing other than that contained in the operating instructions unless you are qualified to do so.

TROUBLESHOOTING TIPS

How do I reset the filter indicator lights? I put in a new filter but the red or yellow lights are still illuminated.

After changing the filter, RESET the filter indicator by holding down the FILTER button for 5 seconds while the unit is ON. The light above the FILTER button should reset to green.

How do I find out what electrical specifications my unit needs?

Please refer to the rating label on the back of the unit. Here you will find your unit's voltage, hertz, amps and outlet requirements.

Can I clean the filter?

The black mesh layer on the front of the filter, known as the prefilter, captures large dust and hair. This layer is held on with Velcro®-like strips. This prefilter can be vacuumed in place or replaced with a new prefilter to maintain efficient operation of the unit. No other layers or parts of the filter can be washed, cleaned, or otherwise reused. Please replace the filter regularly to maintain optimal performance.

I have an issue not listed in this manual.

Please visit www.alen.com and send us a message or call 1-800-630-2396 during business hours. A customer service representative will respond to your inquiry in a timely manner.

What information do I need when I contact customer service for warranty?

Please refer to the rating label on the back of the unit. This rating label has your unit's serial number and other important information we need to assist you.

WARRANTY AND EXTENDED COVERAGE

Please visit <https://alen.com/foreverguarantee> for all warranty information. For any questions, please contact customer service by calling 1-800-630-2396 or email service@alen.com

Alen Corporation
9200 Waterford Center Blvd. Suite 600
Austin, TX. 78758



Copyright © 2022 Alen Corp. All Rights Reserved.
BreatheSmart FLEX April-12-2022