

# Installation Instructions

## Care & Maintenance

## Warranty

- 2 Prior To Installation
- 4 Installation Instructions
- 8 Drawer alignment & installation
- 9 Door Hinge alignment & installation
- 10 Care & Maintenance Guide
- 14 Troubleshooting
- 15 Warranty

**Hey qualified tradie!  
Be a legend and please  
read installation instructions  
inside before installation**



If the product is not installed in accordance with these instructions, your warranty may be void and the homeowner may have a claim against you (the installer).



**Hey home owner!  
Please read important  
care, maintenance and  
warranty info**

# ✓ PRIOR TO INSTALLATION CHECKLIST



This product must be installed by a qualified tradesperson and we would expect the installation to be undertaken in a tradesperson like manner and finished to a tradesperson standard. This product carries a full warranty against faulty workmanship and materials.

**Please inspect thoroughly before installation to ensure that the product has not been damaged and is correct. No claims for damage or incorrect items will be recognised after installation.**

**IT IS THE RESPONSIBILITY OF THE INSTALLER TO MAKE ANY ADJUSTMENTS TO DOORS/DRAWERS AFTER INSTALLATION IF REQUIRED.**

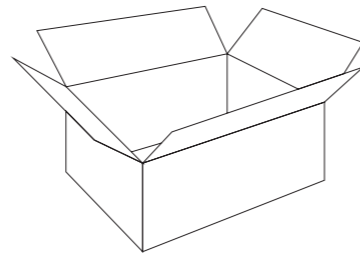
## 1 Check Products For Any Damages

Within 48 hours of receiving your goods, unpack your product and check for any possible freight damages or incorrect items.

Please contact your place of purchase to report damages or missing parts.

**No claims for damages will be recognised after installation.**

Please note: fixing screws/bolts are not supplied for installation.



## 2 Positioning & Ventilation

Planning your bathroom furniture placement is critical.

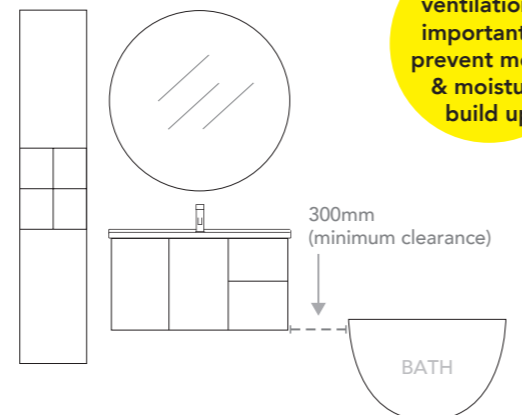
Furniture must be at least 300mm away from any wet areas. Materials used in the construction of our furniture units are moisture resistant, not water proof.

Do not expose furniture to shower spray.

It is important that your bathroom is adequately ventilated to eliminate moisture build up.

**High humidity will lead to permanent dampness and mould resulting in a deterioration of the materials in your bathroom.**

**Water damage is not covered under Warranty.**

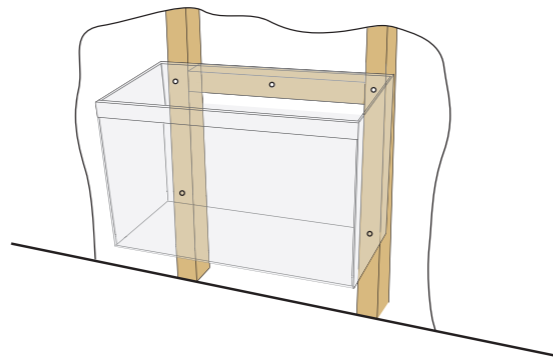


## 3 Check for Support Beams

Wall hung furniture & basins require fixing to a support beam fitted between the studs to give a solid wall backing to attach the vanity to.

If necessary, fix additional support noggins at desired height for cabinet and basin fixing prior to sheeting the wall.

Ensure total width of support noggin exceeds vanity width.



## 4 Check for Plumb Walls & Level Floors

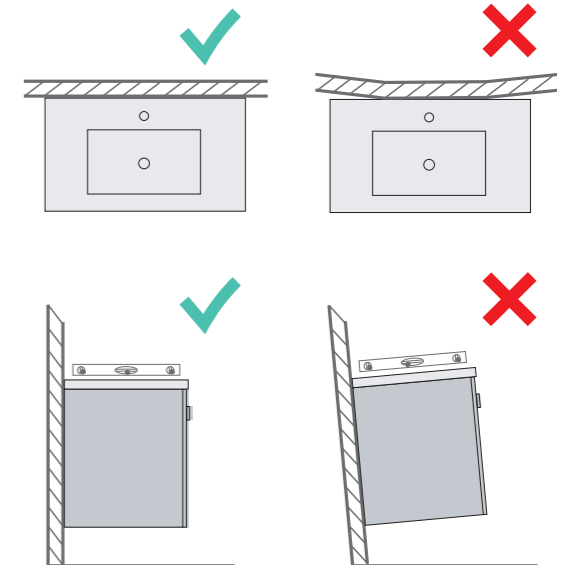
Ensure the wall is plumb and straight, ensure floor is level. If you fix the product to a non-plumb wall or floor the following could happen:

- Your door or drawers will not operate correctly.
- Door or drawers will not align.
- Basins will not sit level, which may cause water to pool or not drain properly.

If it is not possible to make the wall or floor plumb and straight you must pack the vanity out so that it does not follow the out of aligned wall.

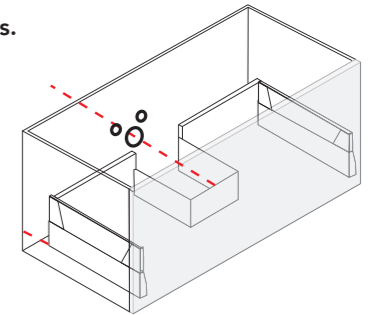
Floor standing vanities must sit on a level floor or be packed so they sit level and true.

**Please note** if your vanity is fixed to a bowed wall, the fastening of the fixings will force your cabinet to twist and benchtop materials may crack due to increased stress on joins and materials.



## 5 Check Plumbing Positions Align with Product Interior Configurations.

Take note of clearances behind drawers when considering water supply fittings inside cabinet.

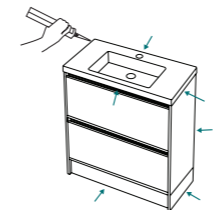


## ⚠ IMPORTANT TIPS



**ENSURE ALL TILES EXTEND BEHIND AND BENEATH THE BATHROOM FURNITURE.**

ADP do not recommend tiling in furniture due to moisture and mould build up which can damage the material and void the warranty.



**ALL AREAS WHERE CABINET/TOP MEETS WALL AND/OR FLOOR MUST BE SEALED USING A NEUTRAL CURE SILICONE.**

All edges where vanity top meets cabinet, wall or surrounding furniture must be sealed with a continuous bead of silicone.



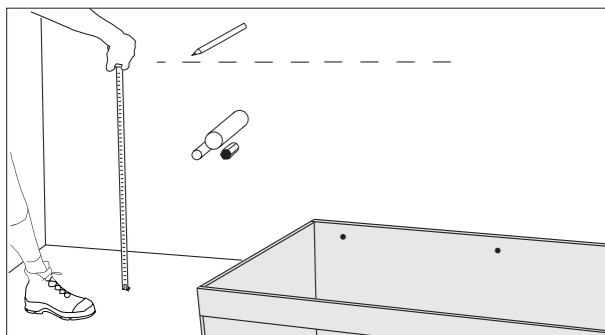
**IT IS THE RESPONSIBILITY OF THE INSTALLER TO MAKE ANY ADJUSTMENTS TO DOORS/DRAWERS AFTER INSTALLATION IF REQUIRED.**

There may have been some movement in transportation and installation which causes doors/drawers to become unaligned.



# VANITY INSTALLATION

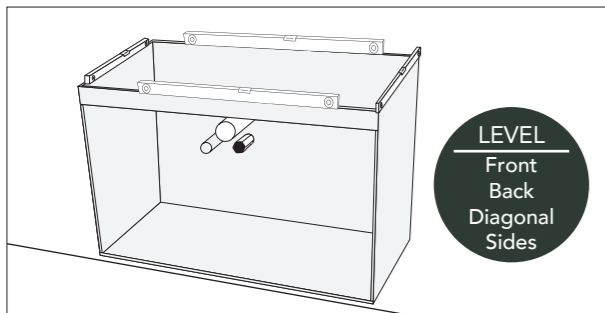
## 1. LOCATION



After completing the Prior to Installation Checklist on page 2, mark the position of the top of the vanity. Don't forget to factor in the top/basin thickness to get the correct height.

**Note:** Vanity must attach to a minimum of two support beams, mark these positions.

## 3. LEVELING

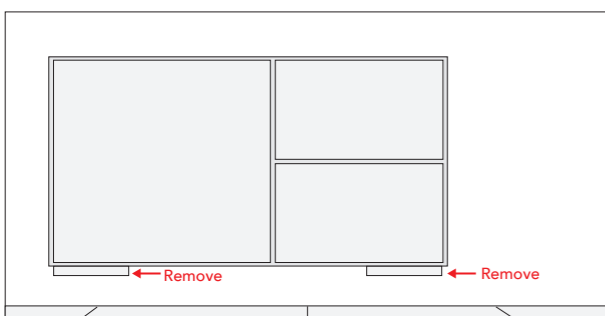


Position the vanity over the pipes in the correct position and fix with a single screw in centre of vanity to hold in place.

Check the vanity is completely level.

**Note:** You may want use a level support/noggin to assist while leveling.

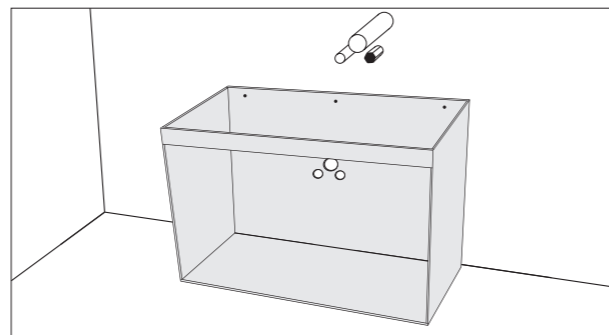
## 5. REMOVE TRANSPORTATION BLOCKS



Once cabinet is secured to the wall carefully remove transportation blocks from the underside of the cabinet (we recommend using a chisel).

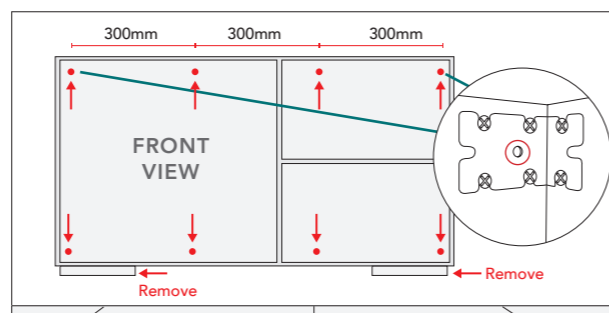
**IMPORTANT:** Before installing drawers, vacuum out drawer runners to ensure drawer runners are free of any debris as this may effect the operation.

## 2. PREPARING THE CABINET



Remove doors and drawers. Measure correct plumbing loctions and drill holes for plumbing in the back panel and/or base of the cabinet with an appropriate sized hole saw. Pre-drill screw locations for fastening to wall as per 'Step 4'.

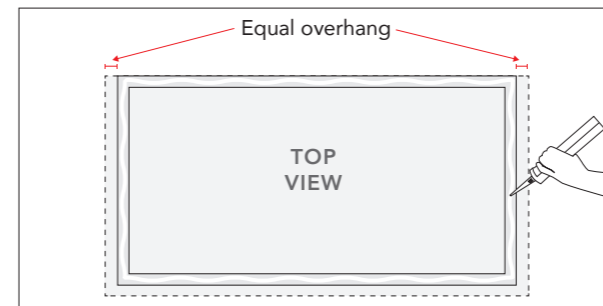
## 4. SECURING THE CABINET



Securely fasten the vanity to the wall through back of vanity with appropriate screws/bolts at TOP and BOTTOM of cabinet. Fix the cabinet through the top left and right hand brackets and evenly space apart the horizontal fixings at a maximum of 300mm apart. For the bottom start the fixing points no further than 100mm from each end of the cabinet and no higher than 50mm from the base panel.

**Note:** Where a stud or support beam cannot be located, use an appropriately sized hollow wall anchor. Vanity must attach to a minimum of two support beams. Ensure fixings clear all water/electrical services in wall.

## 6. FIX TOP / BASIN

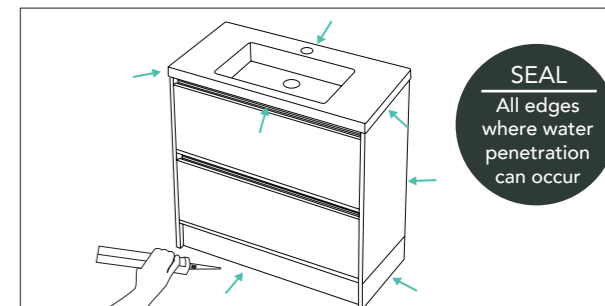


Using a non-acidic silicone, apply a continuous bead of silicone to the top four edges of the vanity and at the back where the top meets the wall. Position the top so it has equal overhang on each side, ensuring the top surface is level.

**If using a seperate basin,** position in place and fully seal the basin to the top /cabinet using a continuous bead of silicone.

**Note:** Seal any visible gaps between the cabinet and the top and basin with continuous bead of silicone.

## 7. SEALING



Apply non-acidic silicone to all edges where vanity top and cabinet meet the wall and floor.

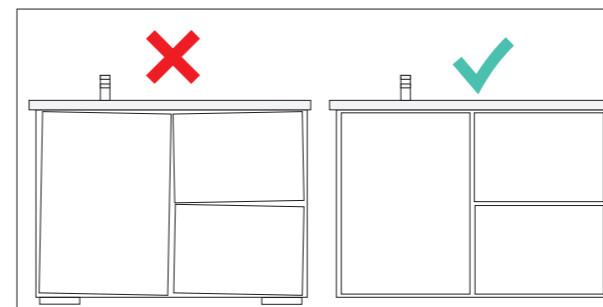
Materials used in the construction of this unit are water resistant NOT water proof, so all areas need to be sealed to prevent water penetration.

**Note:** Gap sealant can be used in place of silicone where the unit meets tiled surfaces.



# FINISHING STEPS

## ADJUST DOORS & DRAWERS

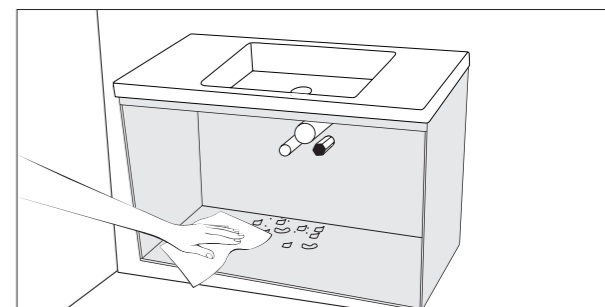


Vacuum out drawer runners to ensure drawer runners are free of any debris. Install drawers and doors back onto cabinet and make adjustments to align the doors and drawers correctly. See pages 8 for instructions.

**NOTE: IT IS THE RESPONSIBILITY OF THE INSTALLER TO MAKE ANY ADJUSTMENTS TO DOORS AFTER INSTALLATION.**

**Don't forget to remove the transportation blocks on the underside of the cabinet!**

## CLEANING



Clean all building residue from the cabinet. Dry any spillage or leakage of water on or inside the cabinet during installation.

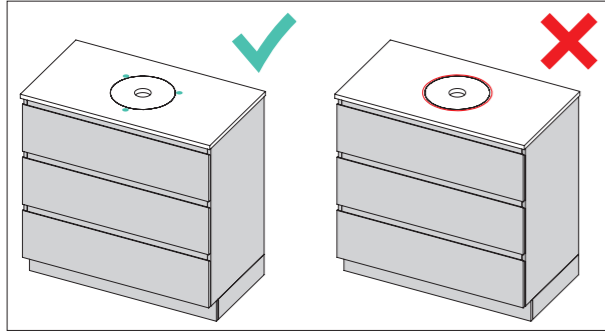
**IMPORTANT: Vacuum out drawer runners to ensure drawer runners are free of any debris as this may effect the operation.**

For vanity care and maintenance see page 10.



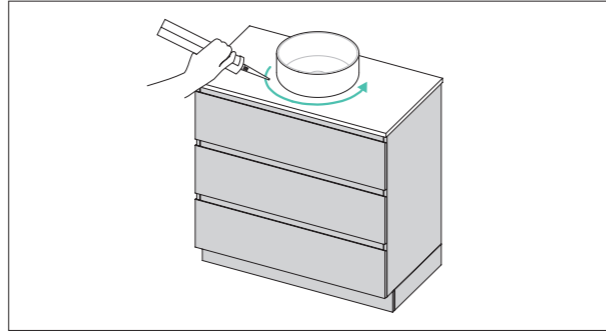
## FITTING ABOVE COUNTER SINK

Note: Basin replacement in the future is an important factor to consider when fixing and sealing basins. By limiting silicon application as per instructions allows basin removal without damage to benchtops.



Apply 20mm silicon dots to hold basin in place, limit to 3 fixing points to enable future basin removal.

**DO NOT** apply a bed of silicon to fix basin to benchtop as this will make it difficult in the future to replace basin.



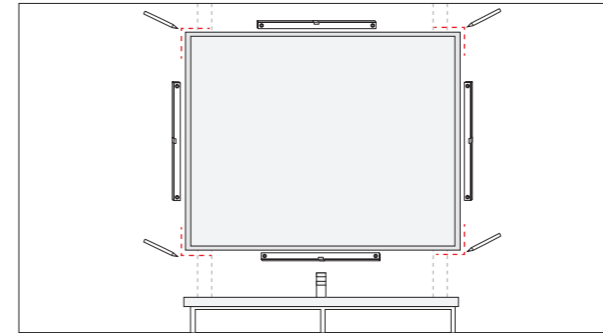
Once basin is in final position and plumbing is finished, put a bead of silicon around the edge to seal and fix in place.



## MEDICINE CABINET INSTALLATION

**Note:** If you are installing a light or powerpoint with your mirrored shaving cabinet make sure you consult with your electrician before installing. If the cabinet has easy link brackets please follow the instructions on page 7.

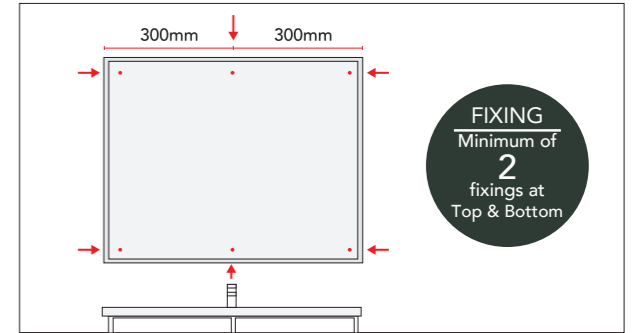
### 1. POSITION CABINET & LEVEL



1. Place cabinet on flat surface to remove mirrored doors. Remove doors and place flat on soft surface with mirrors facing up to avoid damages.
2. Locate support beams and position unit in desired location and check all sides are sitting level.
3. Mark the position of the cabinet on all four corners of cabinet

**Note:** Damage during installation is not covered under ADP warranty.

### 2. SECURING THE CABINET

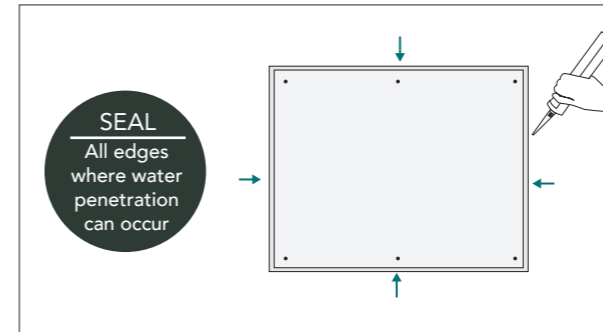


**FIXING**  
Minimum of  
2  
fixings at  
Top & Bottom

Securely fasten cabinet to the wall through back with appropriate screws/bolts at TOP and BOTTOM of cabinet. Evenly space apart the horizontal fixings at a maximum of 300mm apart.

**Note:** Where a stud or support beam cannot be located, use an appropriately sized hollow wall anchor.

### 3. SEALING

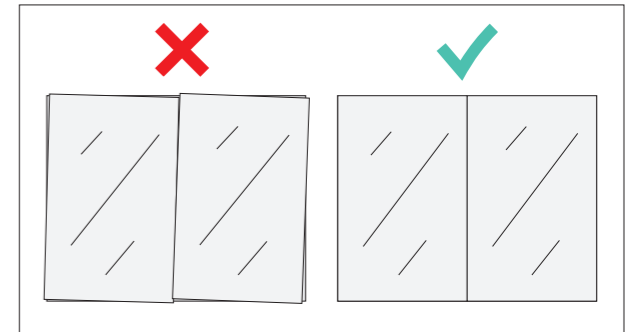


**SEAL**  
All edges  
where water  
penetration  
can occur

Apply non-acidic silicone to all edges where cabinet meets the wall.

**Note:** Gap sealant can be used in place of silicone where the unit meets tiled surfaces.

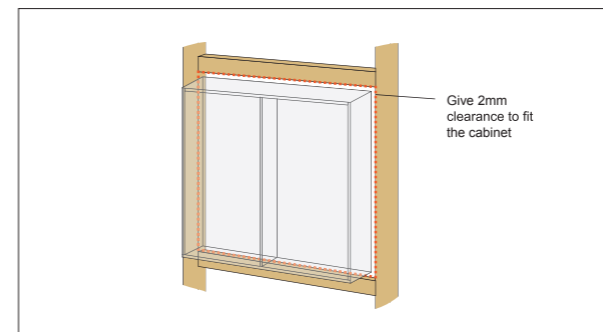
### 4. ADJUST DOORS



Install doors back onto cabinet and make adjustments to align the doors correctly. See pages 9 for instructions.

**NOTE:** IT IS THE RESPONSIBILITY OF THE INSTALLER TO MAKE ANY ADJUSTMENTS TO DOORS AFTER INSTALLATION.

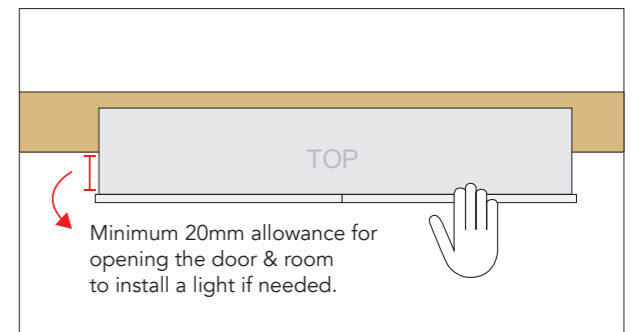
### OPTION: WHEN RECESSING A MIRRORING SHAVING CABINET



Give 2mm  
clearance to fit  
the cabinet

Complete Step 1, cut a hole 4mm bigger than the overall cabinet carcass in the wall. Position and secure cabinet in cut out, go to Step 2.

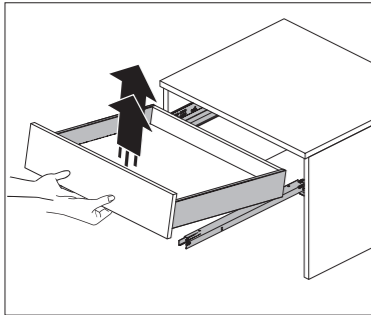
**Note:** Make sure the hole has sufficient noggings to fix top and bottom of carcass.



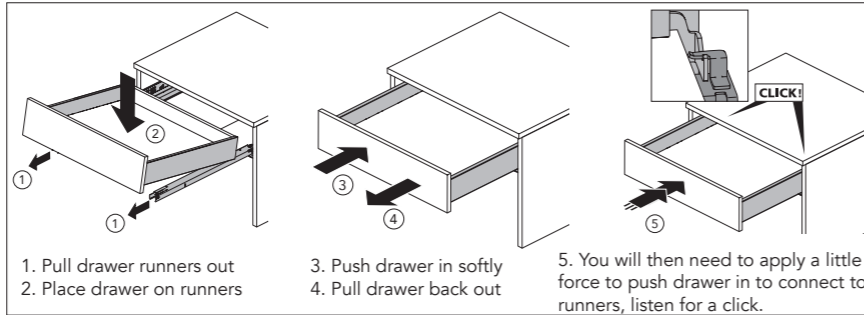
Minimum 20mm allowance for opening the door & room to install a light if needed.

Ensure the cabinet carcass protrudes by a minimum of 20mm from the wall (including tiles) to allow for finger pull on the door.

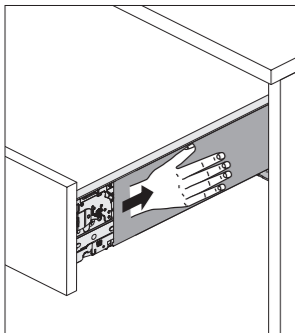
## REMOVING DRAWER



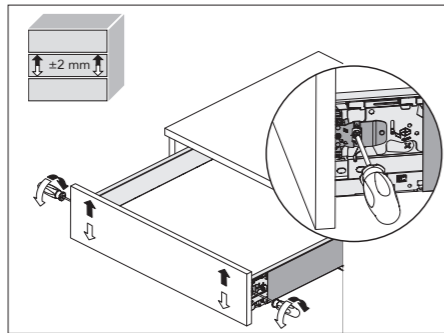
## INSERTING DRAWER



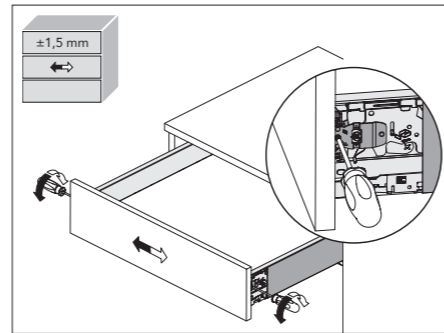
## SLIDE DRAWER COVER



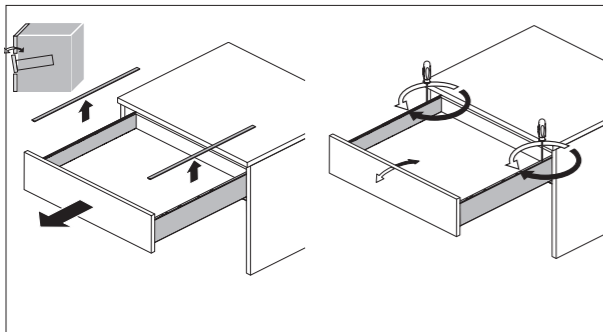
## HEIGHT ADJUSTMENT



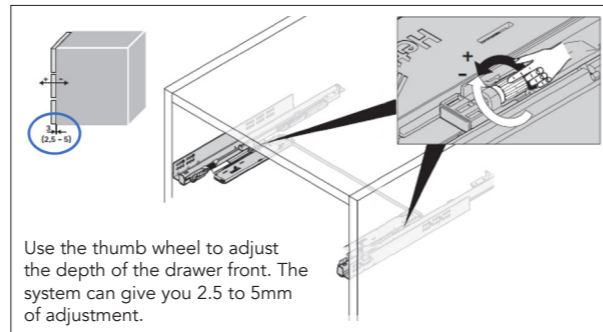
## LATERAL ADJUSTMENT



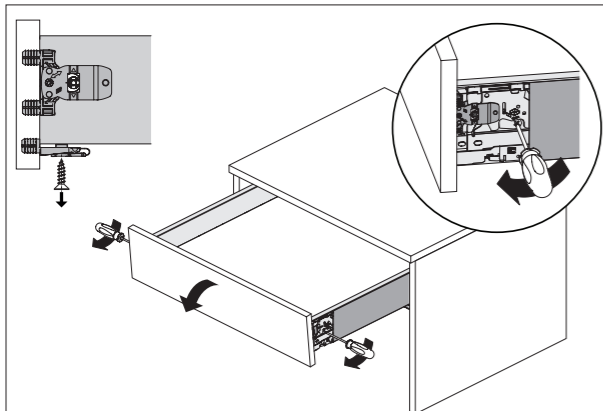
## TILT ADJUSTMENT



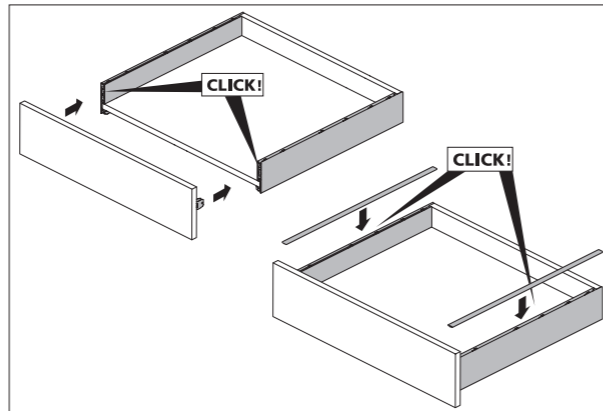
## DEPTH ADJUSTMENT (FOR PUSH-TO-OPEN ONLY)



## DRAWER FRONT REMOVAL

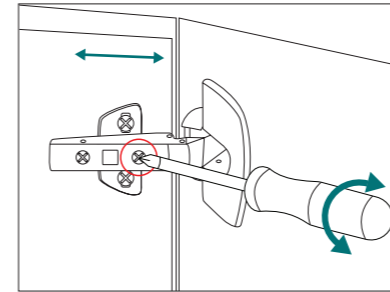


## DRAWER FRONT INSTALLATION



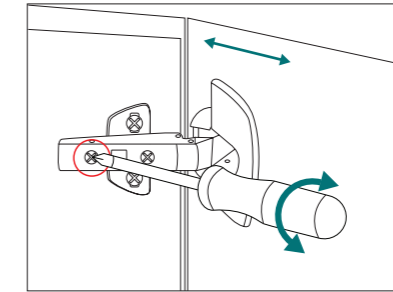
# DOOR HINGE ALIGNMENT

## SIDE ADJUSTMENT



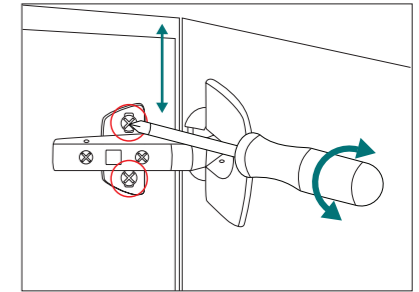
Use front screw to move door to the left or right, or to level each door.

## DEPTH ADJUSTMENT



Use back screw to move door inward or outward from carcass.

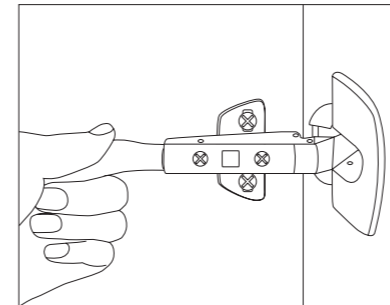
## HEIGHT ADJUSTMENT



Loosen the top and bottom screw on mount plate, adjust door height by moving door up or down, then retighten screws.

# DOOR HINGE INSTALLATION

## REMOVING & INSTALLING DOORS



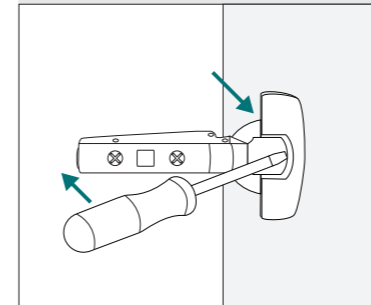
### TO REMOVE DOORS:

Apply finger pressure to clip at back of hinge and pull forward to release.

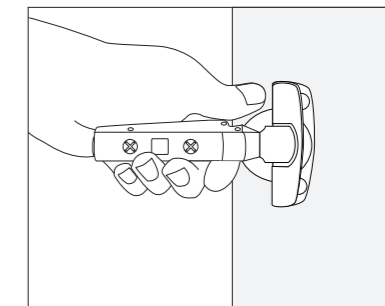
### TO INSTALL DOORS:

Align door hinge with hinge mount on carcass, press back of hinge into place and listen for a 'click' to lock the hinge in place. You may need to apply a little force to lock the hinge in place.

## REMOVING HINGE FROM DOOR

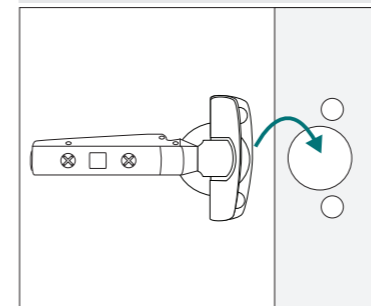


Once you have removed door from the cabinet, using a flat head screw driver, lift and release the top cover plate.

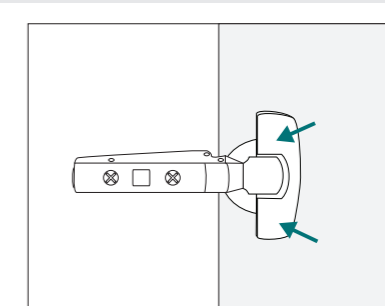


Pull hinge up and out from door. You may need to wiggle the hinge to loosen and use a little force.

## REPLACING HINGE ON DOOR



With top cover plate lifted, place hinge into position on door and insert into holes until flush.



Once secured in position, click cover plate down to lock into place.

# Please take care of me

## Care & Maintenance Guide

### Tips

- Our products are produced from materials that are well suited to the bathroom, however it is important that your bathroom has sufficient ventilation to avoid excessive moisture. High humidity will lead to permanent dampness and mould, resulting in deterioration of the materials.
- Care must always be taken to dry any excessive moisture or water spillage.

### Cabinets

- To maintain the finish on your cabinet use only a soft cloth and weak solution of non abrasive detergent.
- To remove scratches, marks, etc. on two pack polyurethane, rub gently with car cutting compound, car polish or household brass/silver cleaner.
- Goods used in construction are water/moisture-resistant, but not water-proof.
- All cabinets should be installed at least 300mm away from showers or bathtubs to avoid water damage.

### Ceramic Sinks

- To maintain the finish on your ceramic top use only a soft cloth and weak solution of non abrasive detergent.
- Due to the glazed surface of ceramic tops, scratches cannot be repaired or removed.
- Due to ceramic being a handcrafted product that is fired at high temperatures, some visual distortion may occur. This is not a defect but can be seen to add to the beauty of the product.

### Solid Surface Sinks & Benchtops

- Wipe clean with a soft damp cloth or sponge.
- For basic stains clean with mild detergents. For **gloss and semi-gloss** surfaces you can use a non abrasive polish or Brasso. For **matte** surface use a scourer pad or scotch bright to maintain the matte finish.
- Solid Surface Sinks & Benchtops have excellent heat and chemical resistant properties compared to other surfacing products, however to preserve the surface and protect against damage from heat, do not place hot items directly on the surface. Even though Solid Surface can withstand high temperatures, prolonged periods or extreme heat can cause permanent damage.

## Mirrors & Medicine Cabinets

### FOR BEST RESULTS

Use a slightly moistened microfibre cloth to remove dry dirt or grime, then buff clean with dry microfibre cloth or use a soft dry cloth with a tight weave (which is more soft and non-abrasive). This will leave you with a clean, smear-free finish. By using alkaline (ammonia) or acid (vinegar) based products you not only risk damaging the silvered backing of the mirror, but also tend to leave behind streaks and smears.

### DO NOT

Do Not use ammonia-based cleaning products such as glass cleaner. These may erode the mirror's silver backing. Be sure to read the label of any such cleaning products before use.

### PROTECTION AGAINST 'BLACK-SPOTTING'

Alkaline, acid and moisture elements can cause the silvered backing of a mirror to darken, this is usually referred to as 'black-spotting'. An easy way to protect your mirror against black-spotting is to regularly oil any exposed edges (i.e. polished or bevelled edges), using non-petroleum based oils (eg. sewing machine oil). This will act as a seal to protect against such elements. Always remember to keep your mirror dry and wipe off any water, moisture or steam.



## A note about your vanity top or sink

### I'm unique

Thank you for purchasing our product. We just wanted to let you know a few things about your new product.

**Your vanity top and sink is a handcrafted product that has endured high temperatures during the manufacturing process, some size variation and visual distortion is to be expected. This is not a defect but can be seen to add to the aesthetics of the product.**

**Due to the nature of the manufacturing process, every item is unique.** Please be assured that slight surface variances and size tolerances are normal. We have a thorough quality control process that ensures the finished product meets quality guidelines and is as close to the nominal specifications as possible.

We take pride in delivering quality products and are committed to a sustainable future.

# Let's talk bathroom ventilation

Good bathroom ventilation will save you thousands of dollars and keep your family healthy - mould can be a huge problem in bathrooms if they're not properly ventilated.

We've broken down everything you need to know about ventilation with a handy guide.



Scan to watch a quick 3 minute video with our top bathroom care and maintenance tips to ensure you get years longer out of your bathroom products!

## Why ventilation is so important



It's crucial to have the best ventilation possible for your bathroom as moisture can be the root of all wet area products breaking down and failing, in particular your vanity and mirror. These products are usually water resistant not waterproof so it's important moisture does not build up which will mean your products will last longer, saving you money!

Good ventilation is also key to achieve lower humidity in the room which will minimize bacteria growth and prevent mould and mildew. You'll have less mildew on your grout, walls and ceilings, and fewer mould spores to threaten your respiratory health.

So why wouldn't you keep your bathroom well ventilated!

## Signs of poor ventilation



The earliest sign to look out for is black spotting on mirrors.

When the steam or humidity rises to the top of the room and ventilation is not sufficient, the mirror (which is normally positioned high up in the room) is the first thing to steam up. Over time, this causes damage to the mirror that appears as black spots or corrosion which cannot be reversed.

Other signs might include paint starting to flake on the ceiling, bubbling of paint coatings on fixtures, and furniture swelling.

Evidence of mould or mildew is also a good indicator that your ventilation is not adequate.

## How to achieve good ventilation



The best sign that your ventilation is sufficient is that the mirror doesn't steam up and the tiled walls aren't wet.

The best way to achieve this is to have a good exhaust fan that is correctly sized for the space, to do this you need approximately 50 cfm per toilet and 50cfm per shower or bath. The fan should be installed to exhaust air into a duct that directs the air outdoors, not into your walls. Using the wall joists to guide exhaust air can result in moisture and mould problems in the walls.

Run the fan every time water is being used in the bathroom and run it for around 15 minutes after you shower.

If you have a bathroom window, opening that daily (even in the chilly winter months) in addition to using the exhaust fan will help to keep your bathroom fresh and mould-free.

We hope you enjoy your well ventilated, mould-free bathroom for many years to come!



## TROUBLESHOOTING

PROBLEM	LIKELY CAUSE	SOLUTION
I have noticed damage to my product, should I install it?		No - please advise Home Bathroomware before installation to discuss next steps.
Where can I find specifications or more information for the product I have purchased?		Go to <a href="http://www.homebathroomware.com">www.homebathroomware.com</a> to find the relevant product specifications
My cabinet doors are out of alignment.	There may have been some movement in transportation and installation which causes doors to become unaligned.	Follow the hinge adjustment instructions in this document to align doors.
My cabinet drawers are out of alignment.	There may have been some movement in transportation and installation which causes drawers to become unaligned.	Follow the drawer adjustment instructions in this document to align drawer.
My drawer is not closing properly.	Incorrect installation, debris in the drawer runners or an obstruction preventing the drawer from closing.	<ul style="list-style-type: none"> <li>- Check the drawer box has been installed correctly (instructions in document)</li> <li>- Check the cabinet has been installed correctly (eg. is it level &amp; plumb?).</li> <li>- Check there is no debris in the drawer runners and vacuum out if there is.</li> <li>- Check there is nothing obstructing the drawer (eg. plumbing or tap hose).</li> </ul>
I am missing something from my order (eg. vanity bin or basin).		Please notify Home Bathroomware.
I have a stain or mark on vanity top or sink.		See care & maintenance guidelines in this document for appropriate cleaning method.
I am not sure what to clean my cabinet or product with.		Use a soft cloth and weak solution of non-abrasive detergent to gently wipe over the cabinet. See care & maintenance guidelines in this document for more info.



## WARRANTY

Home Bathroomware ensures that your bespoke products are manufactured using the best quality craftsmanship and machinery. Should you find fault with either materials or workmanship within the warranty period noted below, Home Bathroomware will, at its discretion, repair or supply a replacement for the faulty product or component.

PRODUCT	DOMESTIC WARRANTY	COMMERCIAL WARRANTY
Cabinets - Vanities, Mirrored Cabinets (excluding mirror)	10 Years - Domestic Use 1 Year - Parts & Labour	1 Year
Solid Surface Benchtops	10 Years - Domestic Use 1 Year - Parts & Labour	1 Year
Solid Surface Sinks	7 Years - Domestic Use 1 Year - Parts & Labour	1 Year
Ceramic Sinks	1 Year - Domestic Use and Parts & Labour	1 Year
Mirrors (including mirrored surfaces on medicine cabinets)	1 Year - Domestic Use and Parts & Labour	1 Year
Hardware	7 Years - Domestic Use 1 Year - Parts & Labour	1 Year

Adjustment of doors and drawers is undertaken during manufacturing and readjustment will be necessary after installation – this does not form part of the warranty. It should be noted that all cabinetry is manufactured from water-resistant materials. This does not mean that they are waterproof. Care must be taken to immediately dry any condensation, spillage or water leakage that may gain access to the cabinet as water damage is not a justifiable claim. Installation, cleaning and maintenance instructions must be followed to ensure validity of warranty.

Home Bathroomware's liability is limited to repair, replacing, or giving credit for the faulty goods and it does not include installation expenses and/or damages or removal of any unit. The purchaser must provide proof of purchase when making a claim. The warranty will be voided if a damaged or incorrect unit has been installed.

Our goods come with guarantees that cannot be excluded under the American Consumer Law. You are entitled to a replacement or refund for a major failure and for compensation for any other reasonably foreseeable loss or damage. You are also entitled to have the goods repaired or replaced if the goods fail to be of acceptable quality and the failure does not amount to a major failure.

### CONDITIONS

1. Items must be installed by a licensed tradesperson.
2. Failure is due to a fault in the manufacture of the product.
3. Proof of purchase is provided.
4. The installation of the product is in accordance with the instructions provided.

**Please report any issues with your product within 48 hours of receiving your goods, no claims will be considered after this time. No claims for damages or wrong product will be recognised after installation.**

### EXCLUSIONS

To the fullest extent permitted by law, the manufacturer excludes all liability for damage or injury to any person, damage to any property and any indirect consequential or other loss or damage. Manufacturer will not be liable for the cost of installation or removal of any unit and the warranty will be VOIDED if damage occurred during or after INSTALLATION or a damaged or incorrect unit has been installed. Door and drawer adjustment; Unsuitable or improper use; Incorrect installation or installation not in accordance with the instructions provided; Installation or part installation by the purchaser or any person other than a LICENSED tradesperson; Normal wear and tear; Inadequate or complete lack of maintenance; chemical, electrochemical or electrical influences; excessive heat damage or Harsh detergents or abrasive cleaners used on product finishes, are NOT considered a warranty issue.

Ceramic and Solid Surface sinks and tops have a maximum water temperature of 65°C, water temperatures above this will void warranty.

### CLAIM PROCEDURE

To make a claim, please contact us at [hello@homebathroomware.com](mailto:hello@homebathroomware.com)

Please note that installation of any product is regarded as acceptance of that product and therefore no claims for faulty or damaged goods can be made after installation.



# HOME BATHROOMWARE

[hello@homebathroomware.com](mailto:hello@homebathroomware.com)

[www.homebathroomware.com.au](http://www.homebathroomware.com.au)

[@homebathroomware](https://www.instagram.com/homebathroomware)