

## STARDAST

Design Francesco Lucchese

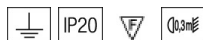
## STARDAST AP 3



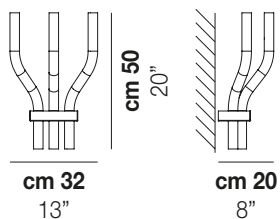
Collections of lamps with arms made of blown and handcrafted crystal glass. The metal frames hide an original fastening system of the arms and of the cabling system.

## STARDAST AP 3

### TECHNICAL DATA:



### CERTIFICATIONS:



### LIGHT SOURCES

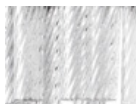
3x60w 120V/60HZ G9

VOLUME Mc 0,08  
GROSS WEIGHT Kg 6  
NET WEIGHT Kg 4

[download](#)



### SHADE FINISHING



### CRR1

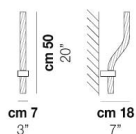
### FRAME FINISHING



### NN

### OTHER VERSION AVAILABLE

Click on the version to go to the web version of the product



### STRDU AP 1