

STARDAST

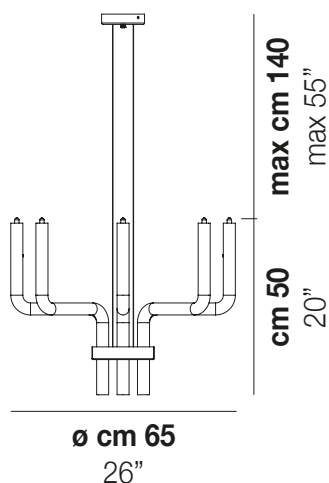
Design Francesco Lucchese

STARDAST SP Q



Collections of lamps with arms made of blown and handcrafted crystal glass. The metal frames hide an original fastening system of the arms and of the cabling system.

STARDAST SP Q



TECHNICAL DATA:



CERTIFICATIONS:

LIGHT SOURCES

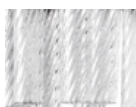
8x48w 120V/60HZ G9

VOLUME Mc 0,22
GROSS WEIGHT Kg 14
NET WEIGHT Kg 9

[download](#)



SHADE FINISHING



CRR1

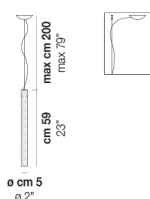
FRAME FINISHING



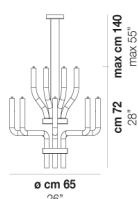
NN

OTHER VERSION AVAILABLE

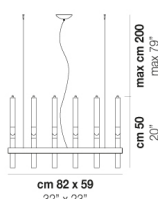
Click on the version to go to the web version of the product



STRDU SP



STRDU SP DOP



STRDU SP R