

PUPPET RING

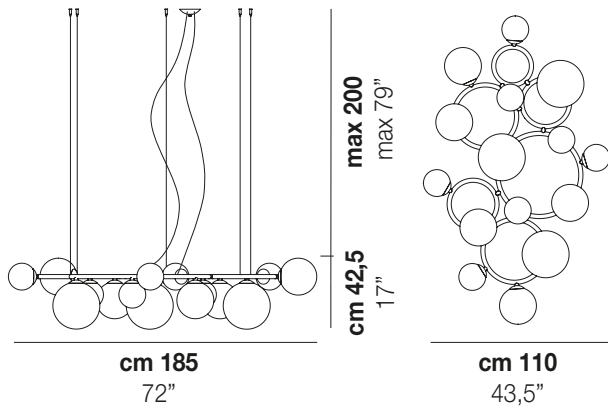
Design Romani Saccani Architetti Associati

PUPPET RING SP 15



The Puppet Ring collection is based on the idea of creating a frame by combining rings with different diameters, on which crystal balls in three sizes are mounted. The new three suspension lamps of different sizes and shapes also maintain a light and elegant aesthetic by ethereally combining crystal glass, smoked, amber and shaded white with gold and satin black nickel finishes.

PUPPET RING SP 15



TECHNICAL DATA:



CERTIFICATIONS:



LIGHT SOURCES

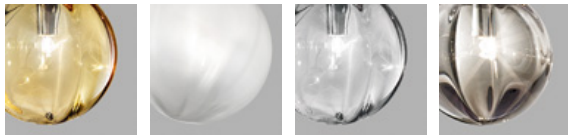
15x60W 220-240V 50/60 Hz G9

VOLUME Mc 1,05
GROSS WEIGHT Kg 44
NET WEIGHT Kg 28,5

[download](#)



SHADE FINISHING



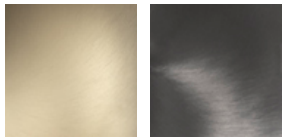
AMTR

BCSF

CRTR

FUTR

FRAME FINISHING

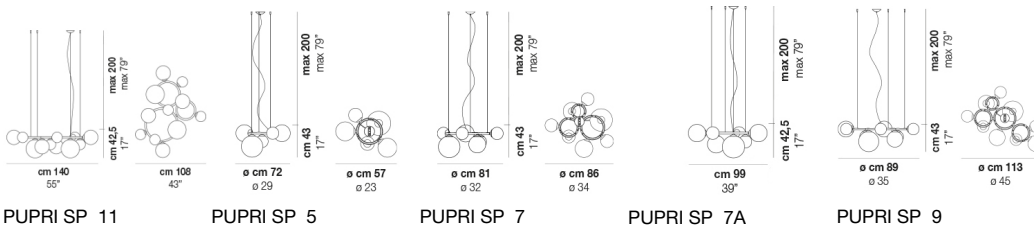


BKS

NNS

OTHER VERSION AVAILABLE

Click on the version to go to the web version of the product



PUPRI SP 11

PUPRI SP 5

PUPRI SP 7

PUPRI SP 7A

PUPRI SP 9