

## PUPPET RING

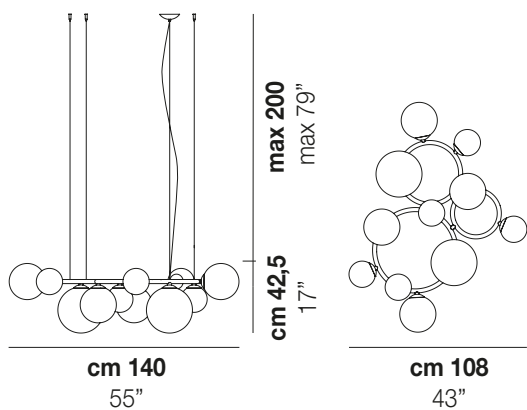
Design Romani Saccani Architetti Associati

## PUPPET RING SP 11

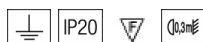


The Puppet Ring collection is based on the idea of creating a frame by combining rings with different diameters, on which crystal balls in three sizes are mounted. The new three suspension lamps of different sizes and shapes also maintain a light and elegant aesthetic by ethereally combining crystal glass, smoked, amber and shaded white with gold and satin black nickel finishes.

## PUPPET RING SP 11



### TECHNICAL DATA:



### CERTIFICATIONS:



### LIGHT SOURCES

11x60W 220-240V 50/60 Hz G9

VOLUME Mc 0,73  
GROSS WEIGHT Kg 33  
NET WEIGHT Kg 19,5

[download](#)



### SHADE FINISHING



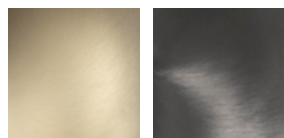
AMTR

BCSF

CRTR

FUTR

### FRAME FINISHING

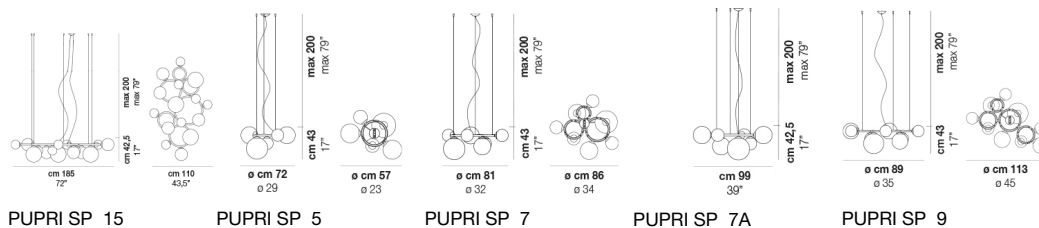


BKS

NNS

### OTHER VERSION AVAILABLE

Click on the version to go to the web version of the product



PUPRI SP 15

PUPRI SP 5

PUPRI SP 7

PUPRI SP 7A

PUPRI SP 9