

The Turbo outdoor LED path light features a clean, cylindrical silhouette highlighted with decorative fins evenly spaced around the circumference which create beautiful geometric shadows when illuminated by the powerful LED light source shining down from the crown.

Outstanding protection against the elements:

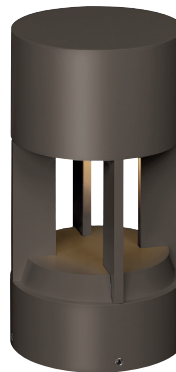
- Powder coat finishes
- Stainless Steel mounting hardware
- Impact-resistant, UV stabilized frosted acrylic lensing

Bolt or Stake mounting options

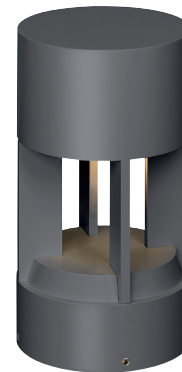
SPECIFICATIONS

DELIVERED LUMENS	1009
WATTS	16.3
VOLTAGE	12V (Transformer sold separately)
DIMMING	MLV
LIGHT DISTRIBUTION	Symmetric
MOUNTING OPTIONS	Bolt or Stake
CCT	2700K, 3000K
CRI	80
COLOR BINNING	3 Step
BUG RATING	B1-U0-G0
DARK SKY	Compliant
WET LISTED	IP65
GENERAL LISTING	ETL
CALIFORNIA TITLE 24	Can be used to comply with CEC 2019 Title 24 Part 6 for outdoor use. Registration with CEC Appliance Database not required.
START TEMP	-30°C
FIELD SERVICEABLE LED	Yes
CONSTRUCTION	Aluminum
HARDWARE	Stainless Steel
FINISH	Powder Coat
LED LIFETIME	L70; >60,000 Hours
WARRANTY*	5 Years
WEIGHT	10.5 lbs.

* Visit techlighting.com for specific warranty limitations and details.



TURBO PATH
shown in bronze



TURBO PATH
shown in charcoal



TURBO PATH
shown in black

12V AC TRANSFORMERS*

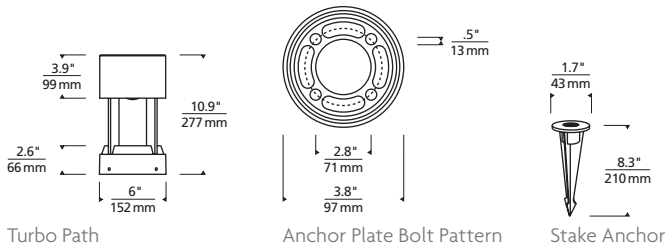
(OUTDOOR RATED, ORDERED SEPARATELY)

ITEM	DESCRIPTION	HOUSING	DIMMING
700OT150T	MAGNETIC, 150W, 120V	STAINLESS STEEL	MAGNETIC
700OT300T	MAGNETIC, 300W, 120V	STAINLESS STEEL	MAGNETIC

ORDERING INFORMATION

PRODUCT	CRI/CCT	LENGTH	LENS	FINISH	VOLTAGE	DISTRIBUTION	OPTIONS
700OATUR	827 80 CRI, 2700K 830 80 CRI, 3000K	12 12"	D DIFFUSE	B BLACK Z BRONZE H CHARCOAL	12 12V	S SYMMETRIC	CONCRETE MOUNT ST STAKE MOUNTING KIT

*REQUIRES 12V REMOTE TRANSFORMER

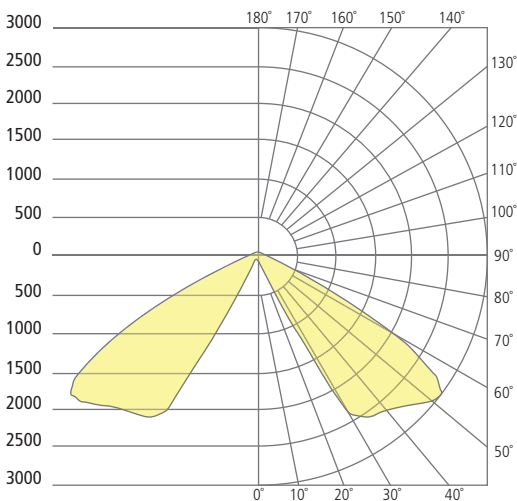


PHOTOMETRICS*

*For latest photometrics, please visit www.techlighting.com/OUTDOOR

TURBO PATH 20°

Total Lumen Output: 1009
 Total Power: 16.3
 Luminaire Efficacy: 64.4
 Color Temp: 3000K
 CRI: 80+
 BUG Rating: B1-U0-G0



PROJECT INFO

FIXTURE TYPE & QUANTITY

JOB NAME & INFO

NOTES



© 2020 Tech Lighting, L.L.C. All rights reserved. The "Tech Lighting" graphic is a registered trademark. Tech Lighting reserves the right to change specifications for product improvements without notification.

TECH LIGHTING

VISUAL COMFORT & Co.

7400 Linder Avenue, Skokie, Illinois 60077

T 847.410.4400