

Southhold Linear Lantern

CC1036 1.0

GENERATION LIGHTING

Pendant

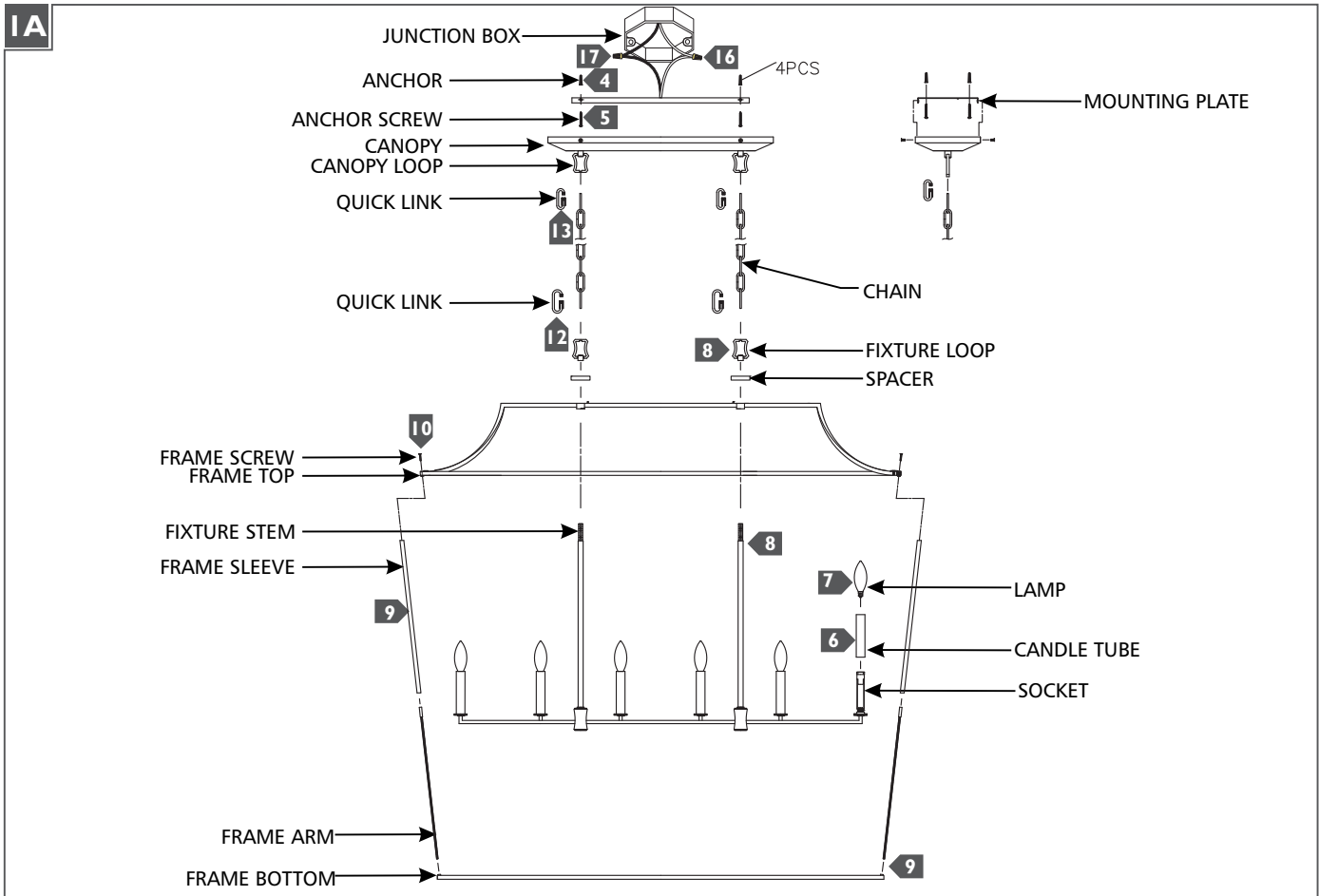
GENERAL PRODUCT INFORMATION:

These fixtures are intended to be installed utilizing NEC compliant junction boxes.

This product is safety listed for damp locations.

Incandescent lamps may be dimmed with a standard incandescent dimmer. LED lamps may be dimmed with a LED dimmer. Consult lamp manufacturer for additional information.

CAUTION - RISK OF FIRE
 This product must be installed in accordance with the applicable installation code by a person familiar with the construction and operation of the product and the hazards involved.
Use minimum 90°C supply conductors.



- 1 Temporarily install the mounting plate to the junction box.
- 2 Mark the anchor hole locations through the mounting plate, then remove the mounting plate.
- 3 Drill appropriate sized holes and install the anchors.
- 4 Secure the mounting plate to the junction box.
- 5 Screw the anchor screws into the anchors.
- 6 Install the candle tube by sliding it over the socket.
- 7 Screw the lamp into the socket. Refer to the label on the lamp socket for Max Wattage information.
- 8 Feed the cord through the frame top, spacer and fixture loop, then screw the fixture loops onto the fixture stems.
- 9 Screw the frame arms into the frame bottom, then place the sleeves over the frame arms.
- 10 Place the frame top on to the frame arms and secure in place with the frame screws.
- 11 Determine the wanted height of the fixture and remove a portion of the chain from the bottom by opening a link with pliers.
- 12 Install a quick link to bottom end of the chain, then secure the quick link onto the fixture loop.
- 13 Install the other quick link onto the remaining end of the chain, then secure the quick link onto the canopy loop.
- 14 Weave the cord through the chain, canopy and out of the junction box. Trim the cord leaving enough to make electrical connections.
- 15 Connect the fixture to a suitable ground in accordance to local electrical codes.
- 16 Connect the white fixture wire (square and/or rigid) to the neutral power line wire with a wire nut.
- 17 Connect the black fixture wire (round and/or smooth) to the hot power line wire with a wire nut.
- 18 Neatly place all the wires into the junction box, place the canopy onto the mounting plate, and secure it in place by using the provided canopy screws.

SAVE THESE INSTRUCTIONS!

GENERATION LIGHTING

7400 Linder Ave, Skokie, IL 160077
800.969.3347

www.generationlighting.com

© 2019 Generation Lighting. All rights reserved.
The "Generation Lighting" graphic is a registered trademark of
Generation Lighting. Generation Lighting reserves the right to
change specifications for product improvements without notification.