

# INSTALLATION INSTRUCTIONS

## PIXELS CCT SELECT LED LIGHT SHEETS

LED-P05-1224-2750, LED-P10-1224-2750

# WAC LIGHTING

Responsible Lighting®

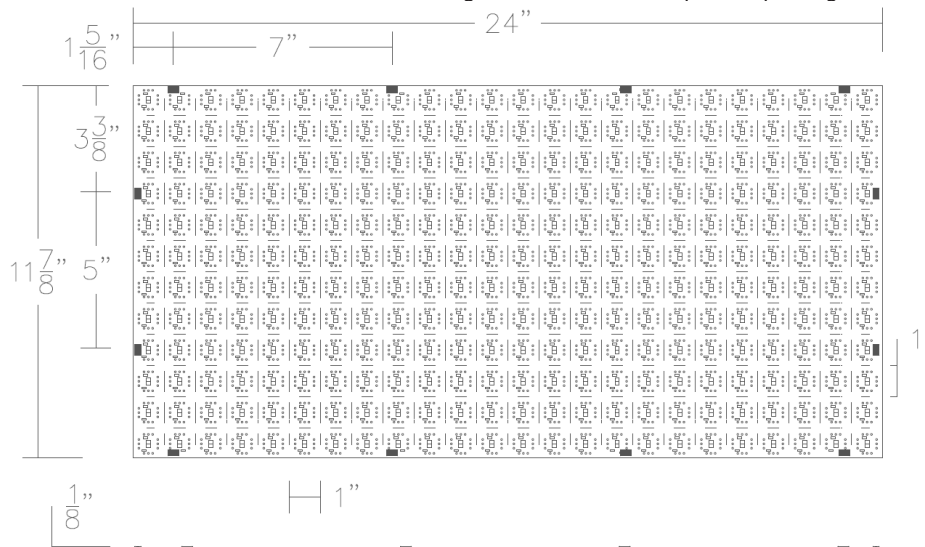
**CAUTION:** To prevent electrical shock, ensure electricity has been turned off at the circuit breaker before beginning.

- Read all instructions before installing.
- System is intended for installation by a licensed electrician in accordance with the National Electrical Code (NEC) and local regulations.
- When handling the fixture, do not apply pressure to the LEDs. Hold the fixture by the base only.
- **PIXELS CONFIGURABLE LED LIGHT SHEETS** have polarity for connection.

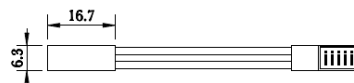
**WARNING:** All parts must be used as indicated in these instructions. This product is designed for use only with the supplied parts and/or accessories designated for use by WAC Lighting. Substitution of parts or accessories not designated for use with this product by WAC Lighting could result in personal injury or property damage and will void the warranty. Contact an authorized dealer or the manufacturer if any parts are damaged or missing.

### PIXELS CCT SELECT LED LIGHT SHEETS

Determine the installation area and material. Different mounting accessories will be required depending on the mounting materials.



### ACCESSORIES



2 inches Pixels to Pixels connector

Qty: 1pc

**MISE EN GARDE:** Pour éviter tout choc électrique, assurez-vous que le disjoncteur soit mis hors tension avant de commencer.

- Lisez toutes les instructions avant l'installation.
- Le système doit être installé par un électricien licencié conformément au code national de l'électricité (NEC), et également aux règlements locaux.
- Lors de la manipulation du luminaire, n'appuyez pas sur les LED. Tenez-le uniquement par la base.
- **PIXELS CONFIGURABLE LED LIGHT SHEETS** ont une polarité pour la connexion.

**ATTENTION:** Toutes les pièces doivent être utilisées comme indiqué dans ces instructions. Ce produit est conçu pour être utilisé seulement avec les pièces et/ou accessoires fournis pour être utilisés avec les produits WAC Lighting. Remplacer des pièces ou accessoires non conçus pour ce produit WAC Lighting pourrait causer des dommages corporels ou matériels et pourrait également causer l'annulation de la garantie. Veuillez contacter un revendeur autorisé ou le fabricant si des pièces manquent ou sont endommagées.

wacighting.com  
Phone (800) 526.2588  
Fax (800) 526.2585

Headquarters/Eastern Distribution Center  
44 Harbor Park Drive  
Port Washington, NY 11050

Central Distribution Center  
1600 Distribution Ct  
Lithia Springs, GA 30122

Western Distribution Center  
1750 Archibald Ave  
Ontario, CA 91761

# INSTALLATION INSTRUCTIONS PIXELS CCT SELECT LED LIGHT SHEETS

LED-P05-1224-2750, LED-P10-1224-2750

**WAC LIGHTING**  
Responsible Lighting®

## WIRING AND INSTALLATION

Determine the number of separately powered runs needed. Calculate the number of power supplies.

<b>Min./max run length</b>	LED-P05 (500 lm/sqft): (1 sheet = 2 sqft). Each sheet is 10W average. Considering 10% Margin of Safety to avoid exceeding power limit: @60W Power Supply: 5.45 sheets max with LED-P05 @96W Power Supply: 8.72 sheets max with LED-P05  LED-P10 (1000 lm/sqft): (1 sheet = 2 sqft). Each sheet is 20W average. Considering 10% Margin of Safety to avoid exceeding power limit: @60W Power Supply: 2.72 sheets max with LED-P10 @96W Power Supply: 4.36 sheets max with LED-P10
<b>Current</b>	420 mA/sheet @ 500 lm/sqft 833 mA/sheet @ 1000 lm/sqft
<b>Power consumption</b>	4.5 – 5.5 W/sqft @ 500 lm/sqft (Considering power variation can be +/- 10%) 9 - 11 W/sqft @ 1000 lm/sqft
<b>Input voltage</b>	24V DC

wacighting.com  
Phone (800) 526.2588  
Fax (800) 526.2585

Headquarters/Eastern Distribution Center  
44 Harbor Park Drive  
Port Washington, NY 11050

Central Distribution Center  
1600 Distribution Ct  
Lithia Springs, GA 30122

Western Distribution Center  
1750 Archibald Ave  
Ontario, CA 91761

# INSTALLATION INSTRUCTIONS

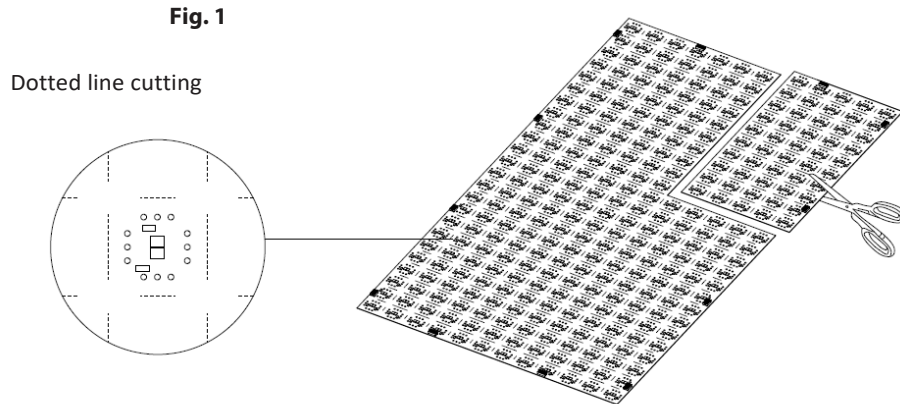
## PIXELS CCT SELECT LED LIGHT SHEETS

LED-P05-1224-2750, LED-P10-1224-2750

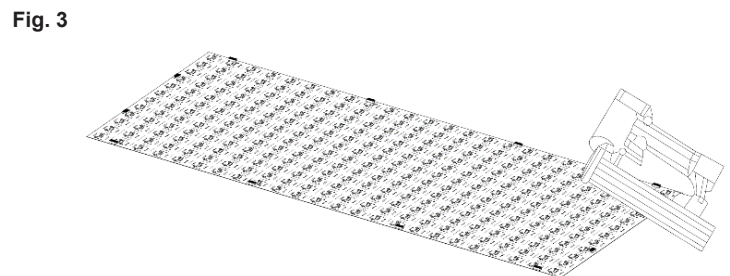
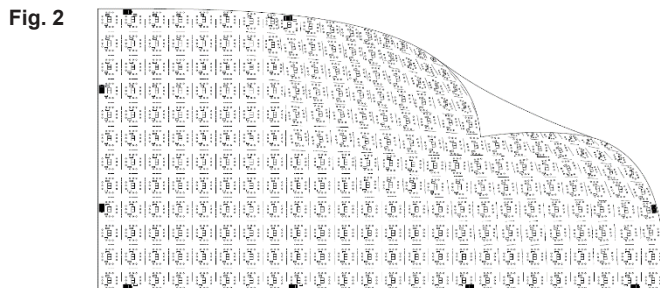
WAC LIGHTING  
Responsible Lighting®

### INSTALLATION

- Measure the area of each run and round it off to the nearest 1 square inch interval.
  - Determine the necessary quantities of PIXELS CCT.
  - Measure the distance between the runs in order to determine the length of extension feed wires.
1. Follow the dotted line cutting guides and cut the PIXELS CCT to desired size. PIXELS CCT is field cuttable vertically or horizontally anywhere to single pixel increment (**Fig.1**). PIXELS CCT is flexible and is adaptable for flat or curved surfaces.



**NOTE:** The included 3M adhesive is sufficient in most applications for smooth surfaces (**Fig. 2**). If mounting surface is a porous or textured surface, a staple gun or nails may be required to secure the PIXELS CCT after wiring (**Fig. 3**).



wacighting.com  
Phone (800) 526.2588  
Fax (800) 526.2585

Headquarters/Eastern Distribution Center  
44 Harbor Park Drive  
Port Washington, NY 11050

Central Distribution Center  
1600 Distribution Ct  
Lithia Springs, GA 30122

Western Distribution Center  
1750 Archibald Ave  
Ontario, CA 91761

# INSTALLATION INSTRUCTIONS PIXELS CCT SELECT LED LIGHT SHEETS

LED-P05-1224-2750, LED-P10-1224-2750

WAC LIGHTING  
Responsible Lighting®

## WIRING

**CAUTION:** Power supply must be installed away from heat sources and accessible for service.

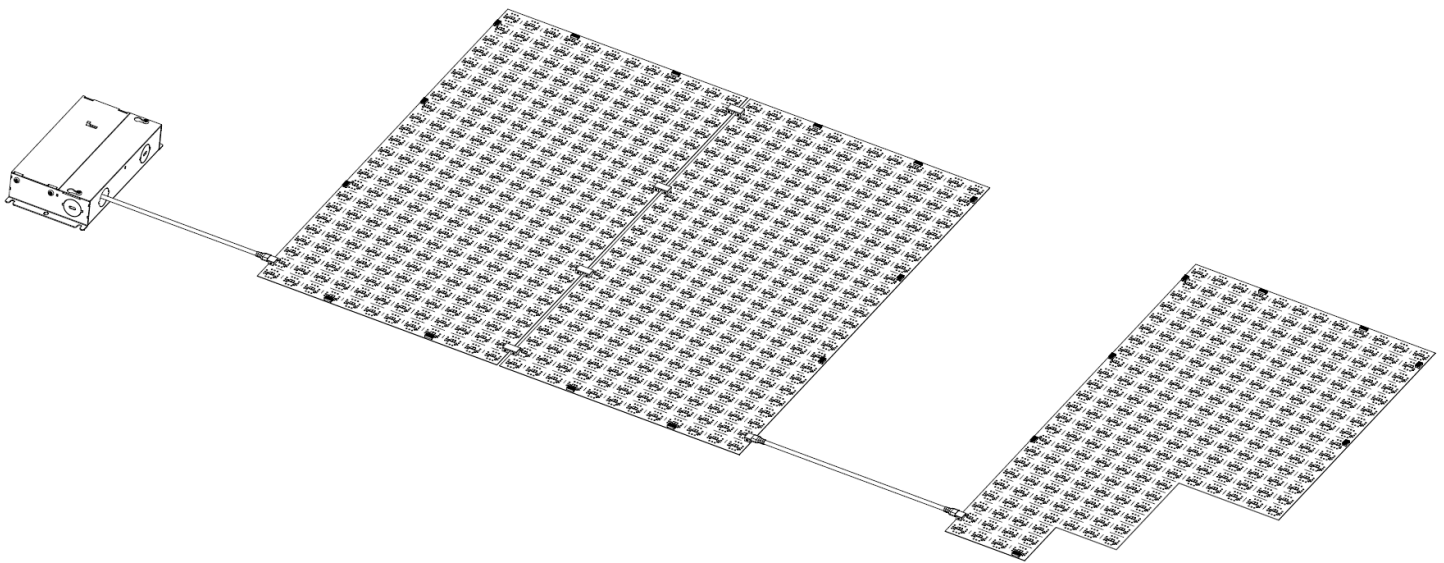
**NOTE:** Enclosed power supply is UL listed. The power supply box has a separate line voltage, and low voltage wiring compartments. Trade size knockout is provided on both compartments.

1. Connect building wires to like-color power supply wires with wire nuts. Building ground wire may be green or uninsulated, and attaches to the green wire from power supply box.
2. Connect the output lead wire of the power supply with the connector on the PIXELS CCT sheets.

**NOTE:** Connector can be connected from any directions. No polarity concerns with connector.

**NOTE:** 12 onboard connectors are included per sheet, the cut sections without connectors can also be powered with wires soldered in the field with the pads around every LED chip (**Fig. 4**).

Fig. 4



wacighting.com  
Phone (800) 526.2588  
Fax (800) 526.2585

Headquarters/Eastern Distribution Center  
44 Harbor Park Drive  
Port Washington, NY 11050

Central Distribution Center  
1600 Distribution Ct  
Lithia Springs, GA 30122

Western Distribution Center  
1750 Archibald Ave  
Ontario, CA 91761