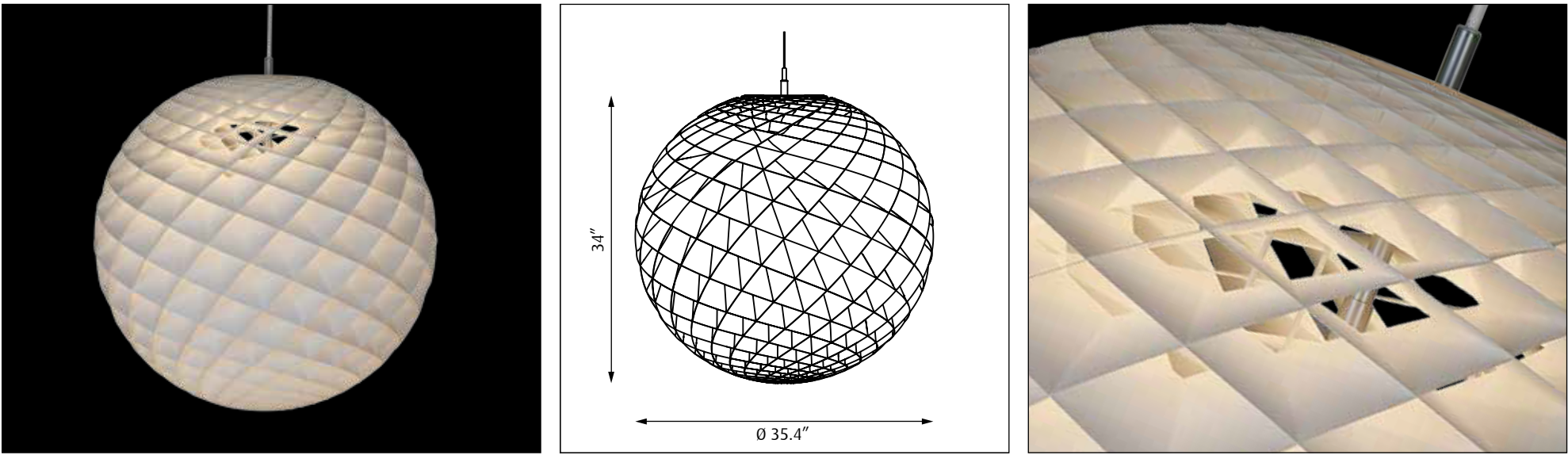


Design Øivind Slaatto



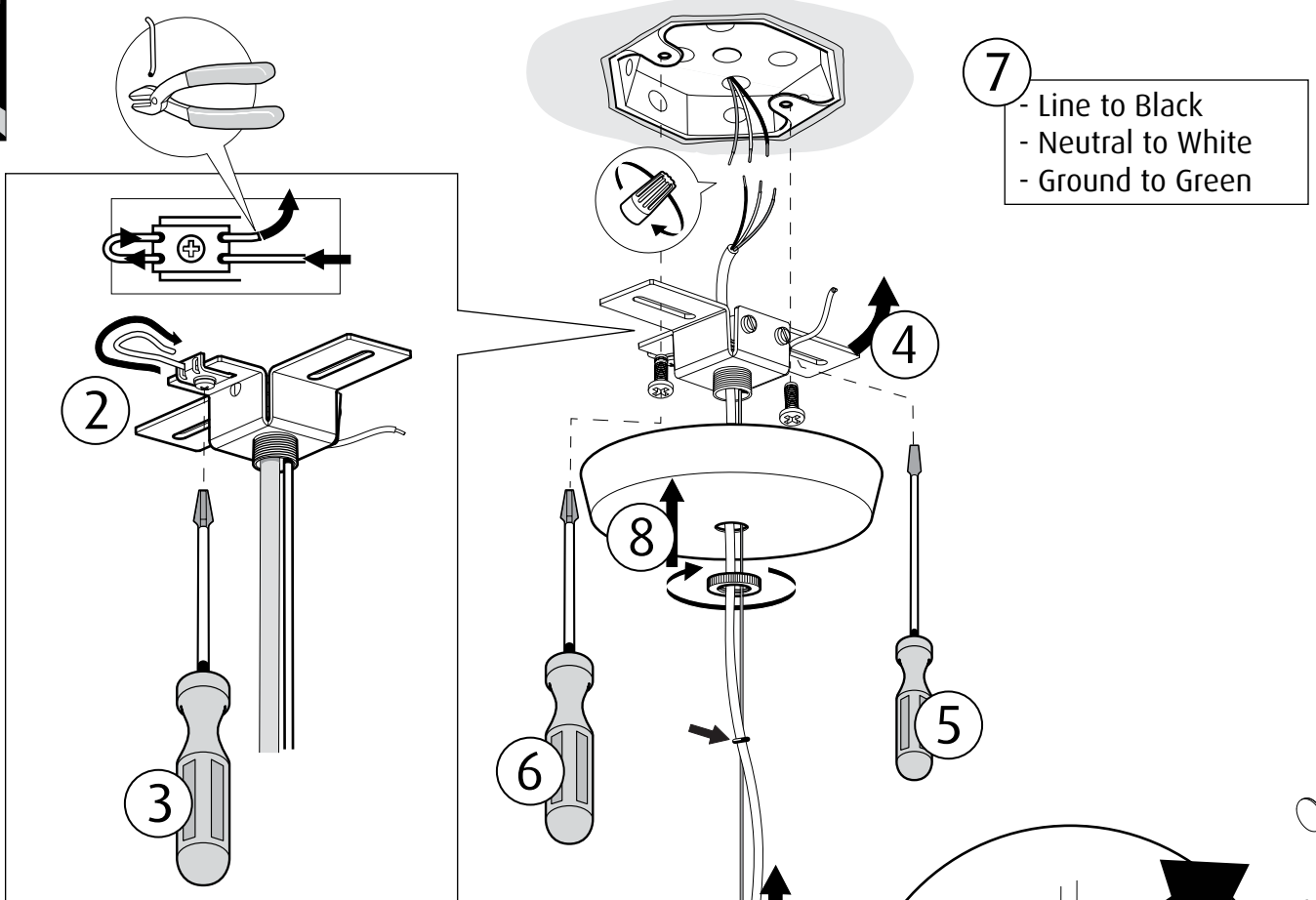
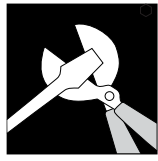
Light source	Voltage	Weight	Electric shock protection	Ingress protection
Max 1/200W/INC/E26⚠	120V	17.6 Lbs	Cl. I	IP20

Recommended cleaning substances:
Wipe off dust with a dry, soft cloth. Remove greasy spots etc. with a soft cloth dampened in lukewarm water (<122° F/ 50° C) with a mild detergent.
Use a thin brush through the openings or use compressed air to remove dust from the lamellae.

Warning: Scouring powder and similar substances will scratch surfaces.
Consult a qualified electrician to ensure correct branch circuit conductor.
All installation is subject to local code and jurisdiction.

The installer must ensure that the ceiling can support the luminaire’s weight. The installer must if necessary reinforce the ceiling structure by adequate means.

Louis Poulsen A/S disclaims any liability if a half mirror light bulb is used. This type of light source reflects the heat and may damage/melt parts of the fixture.



- 7
- Line to Black
 - Neutral to White
 - Ground to Green

This canopy must be mounted to a standard junction box.

The installer must ensure that the ceiling can support the weight of the luminaire.

The installer must if necessary reinforce the ceiling structure by adequate means.

Adjust the position of the rubber rings.

The installer must ensure that the weight of the luminaire, is carried by the steel cable, NOT the luminaire power supply cord.

