

ENIGMA 825

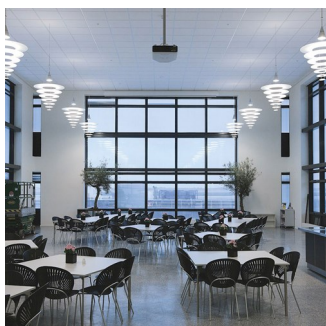
ENIG825 / LED 3000K / 120-277V/60HZ / Black / Blk / - / Dim 0-10v / - / 5741918757

The fixture emits glare-free, soft, comfortable, downward light. The shade design ensures even illumination of the surface. The matte upper surface diffuses the light, while the glossy lower surface ensures optimal reflection.



Shoichi Uchiyama

Shoichi Uchiyama was born and bred in Tokyo. Since the foundation of Shoichi Uchiyama Design Office in 1977, he has been committed to creation of lighting fixtures with glare-free indirect light that make objects beautiful, and allow people to feel the texture and depth of objects.



Blue Water



Yokohama College of Dental Care and Health Sciences

Product info

Information

Electrical: System Wattage: 62W LED Wattage: 57 W Delivered lumens: 3,401 - 5,883 Efficacy: 54.9 lm/W - 94.9 lm/W Certifications: cULus, Damp Location Protection class IP20 Controllability: 0-10V Dimming Color Rendering: Ra \geq 90

Mounting

Suspension type: 1x stainless steel aircraft cable. Canopy: White or black. Cord type: 2-conductor, 18 AWG white or black PVC power cord. Cord length: 12'.

Finish

Aluminum colored or black, wet painted brushed aluminum. Shades: White or black acrylic.

Materials

Cone and pendant tube: Wet painted brushed aluminum. Wire: Stainless steel. Shades: Acrylic.

Sizes and weight

Width x Height x Length (in.) | 32.5 x 61 x 32.5 Max 23.5 lbs

Compliance

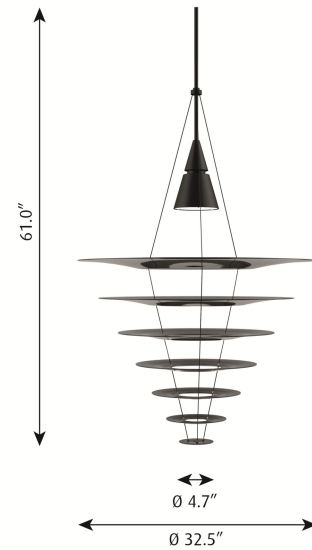
cULus, Damp location.

Light source

LED 3000K
Lumen: 3401

Information

Electrical:
System Wattage: 62W
LED Wattage: 57 W
Delivered lumens: 3,401 - 5,883
Efficacy: 54.9 lm/W - 94.9 lm/W
Certifications:
cULus, Damp Location
Protection class IP20
Controllability: 0-10V Dimming
Color Rendering: Ra \geq 90



Product family



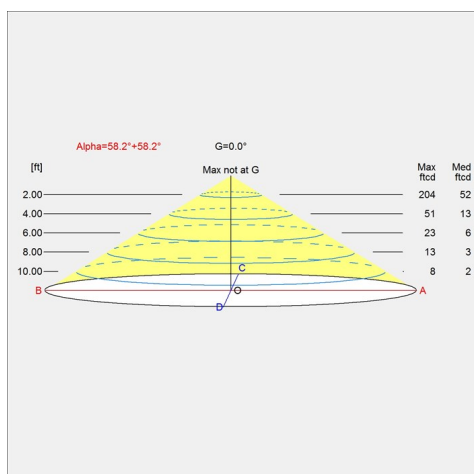
Enigma 425



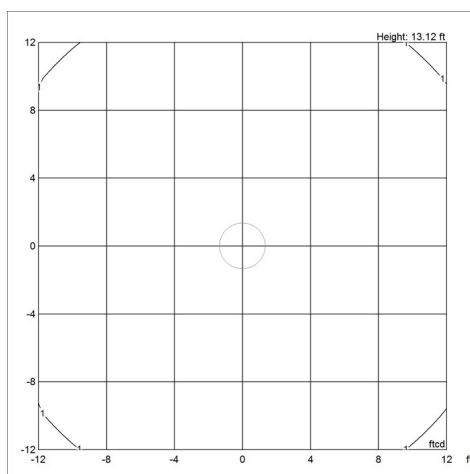
Enigma 545

Light distribution diagrams

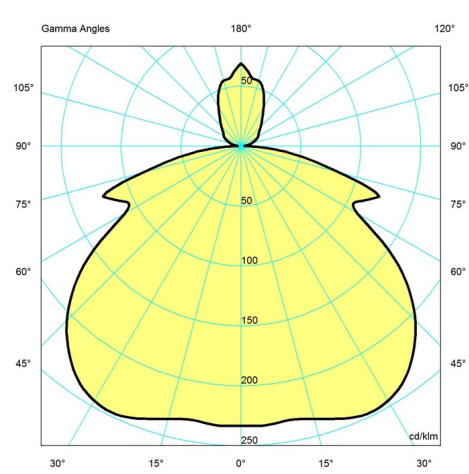
Cartesian



Isolux



Polar



Spare parts & accessories

Product

ENIGMA PENDANT, SHADE 120 W/BUSH. WHITE

ENIGMA PENDANT, SHADE 210 WHITE

ENIGMA PENDANT, SHADE 310 WHITE

ENIGMA PENDANT, SHADE 422 WHITE

ENIGMA PENDANT, SHADE 545 WHITE

ENIGMA PENDANT SHADE 120 W/BUSH. BLK

ENIGMA PENDANT SHADE 210 BLK

ENIGMA PENDANT SHADE 310 BLK

ENIGMA PENDANT SHADE 422 BLK

ENIGMA PENDANT SHADE 545 BLK

ENIGMA PENDANT SHADE 680 BLK

ENIGMA PENDANT SHADE 825 BLK

ENIGMA PENDANT, SHADE 680 WHITE

ENIGMA PENDANT, SHADE 825 WHITE

ENIGMA 825 SUSP 3,7M CABLE W/LED BLK US

Variant number

5741086786

5741086799

5741086809

5741086812

5741087099

5741088878

5741088881

5741088894

5741088904

5741088917

5741088920

5741088933

5741088946

5741088959

5741918870

Data specifications

Colour	Black	Length	32.5
Width	32.5	Height	61
Built-in Height	-	IP class	20
Class	-	Net Weight	23.5
Standby (W)	-	Power Factor (P = 100 % / P = 50 %)	0.95
Inrush Current	-	Light source	LED 3000K
Kelvin	3000	CRI	90
SDCM	3	Lumen	3401
Watt	62	Efficacy	55
Light control	Dim 0-10v	Min. Dim Level (%)	1
UGR Transversal / Axial	13.9/13.9	L80B50 (hours)	-
Driver life	-		