

# LILITH S40 - S55 - S70 PENDANT

rev. 0

Design: Studio Alteam

Code Lilith S40:

0103052053651 White  
0103052053851 Black  
0103052054351 Red  
0103052053351 Silver  
0103052055051 Macha

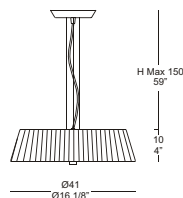
Code Lilith S55:

0103052053652 White  
0103052053852 Black  
0103052054352 Red  
0103052053352 Silver  
0103052055052 Macha

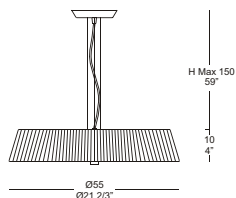
Code Lilith S70:

0103073053652 White  
0103073053852 Black  
0103073054352 Red  
0103073053352 Silver  
0103073055052 Macha

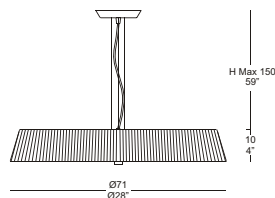
Lilith S40



Lilith S55



Lilith S70



## WARNING

- Before starting the wiring, joint the earth wire to the fixing bracket.
- Always unplug the appliance from the power socket before beginning installation or any sort of maintenance work.
- Use a qualified electrician for installation of this lighting fixture.
- Installation of this fixture must comply with local building codes.
- A fixture weighing more than 50lb must be mounted or supported independently of an outlet box.

## INSTRUCTIONS

- Avant d'effectuer le câblage, relier le conducteur de terre à l'élément de fixation.
- Avant de procéder à l'installation de l'appareil, ainsi qu'avant toute opération d'entretien, il est nécessaire de couper le courant au disjoncteur.
- Employer un électricien qualifié pour l'installation de ce luminaire.
- L'installation de ce montage doit être conforme à codes du bâtiment locaux.
- Un montage pesant plus que 50lb doit être monté ou soutenu indépendamment d'une boîte de sortie.

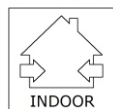
## ADVERTENCIAS

- Antes de realizar el cableo, acople el conductor de puesta a tierra a la brida de sujeción.
- Antes de proceder a la instalación del aparato y en cualquier caso antes de efectuar cualquier operación de mantenimiento, corte la tensión de red.
- Usar un electricista calificado para la instalación de esta luminaria.
- La instalación de este accesorio debe conformarse con códigos técnicos de la edificación locales.
- Un accesorio que pesa más que 50lb se debe montar o apoyar independientemente de una caja de enchufe.

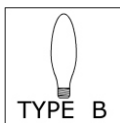
## TECHNICAL DATA



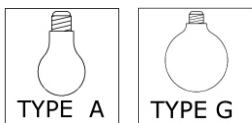
LOCATION



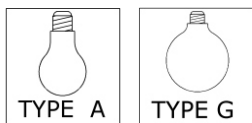
LILITH S40  
3x MAX 60W E12  
120V 60Hz



LILITH S55  
4x MAX 75W E26  
120V 60Hz



LILITH S70  
6x MAX 75W E26  
120V 60Hz



# SERVIZIO AL CONSUMATORE

## ISTRUZIONI DI MONTAGGIO

## CUSTOMER SERVICE

### ASSEMBLY INSTRUCTIONS

# ALT LUCIALTERNATIVE

# LILITH S40 - S55 - S70

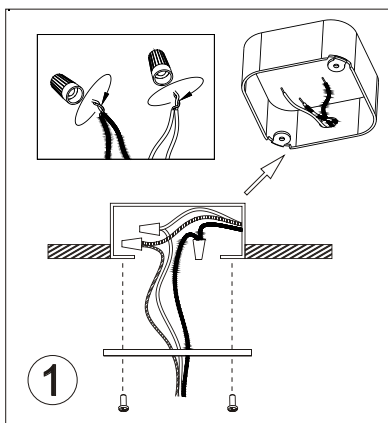
## PENDANT

## CUSTOMER SERVICE

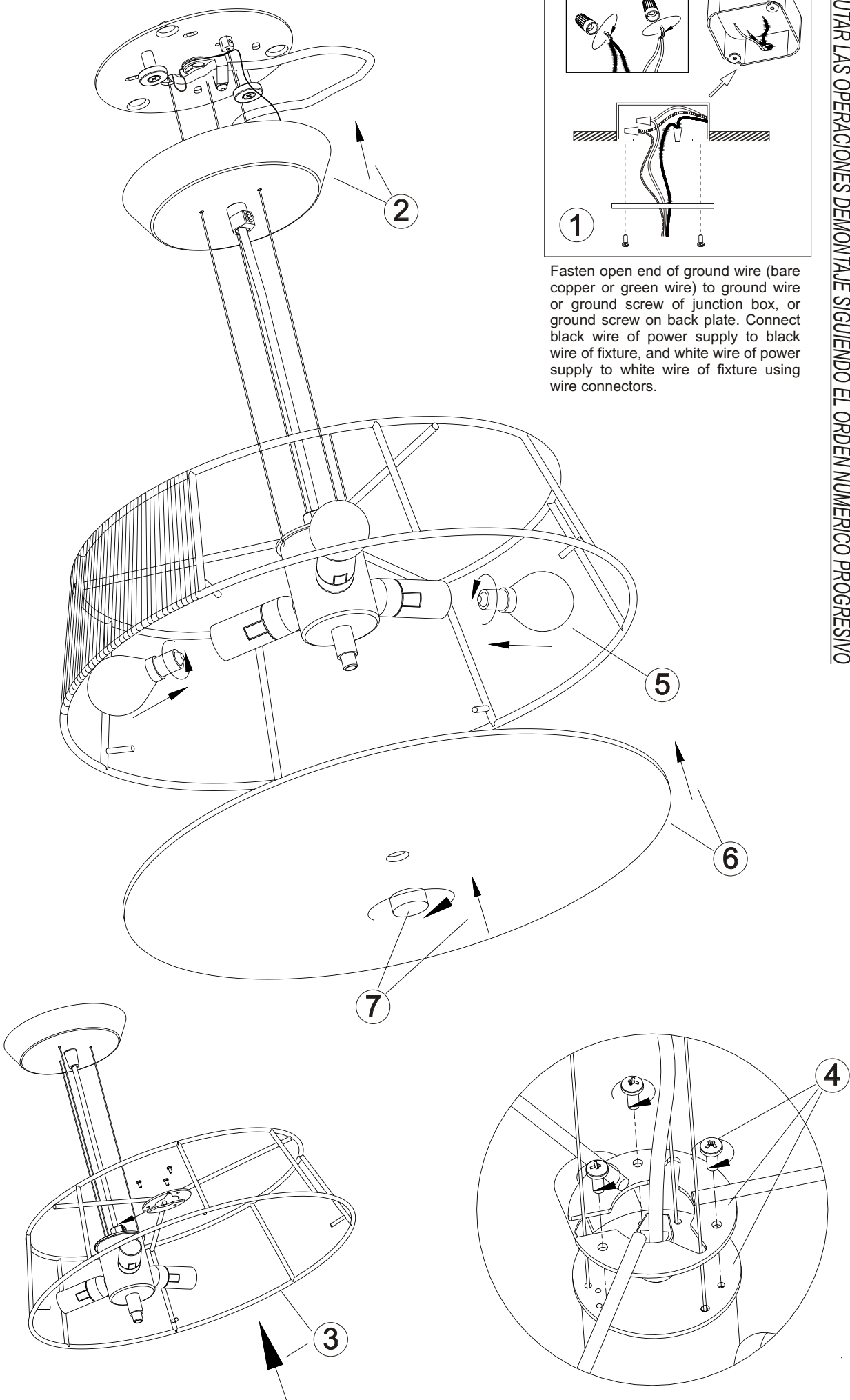
FDV Collection  
11 Mayfield Avenue  
Edison, NJ 08837 USA  
Phone (732) 225-0010 Fax (732) 225-0250  
www.fdvcollection.com  
info@fdvcollection.com  
a brand of LEUCOS USA www.leucosusa.com



**FOLLOW THE ASSEMBLY INSTRUCTIONS BY READING THE NUMERICAL PROGRESSION**  
**EXÉCUTER LES OPERATIONS DE MONTAGE, EN SUIVANT L'ORDRE DE NUMÉRATION PROGRESSIF**  
**EJECUTAR LAS OPERACIONES DEMONTAJE SIGUIENDO EL ORDEN NUMERICO PROGRESIVO**



Fasten open end of ground wire (bare copper or green wire) to ground wire or ground screw of junction box, or ground screw on back plate. Connect black wire of power supply to black wire of fixture, and white wire of power supply to white wire of fixture using wire connectors.



The safety and reliability are guaranteed only when installation instructions are properly followed. Please retain this instruction sheet for future reference.  
La sécurité de cet appareil n'est pas garantie en cas de non-respect de ces instructions, qu'il est nécessaire de conserver.  
La seguridad del aparato se garantiza sólo utilizando de forma apropiada las siguientes instrucciones, por lo tanto es necesario conservarlas.