

ASSEMBLY & INSTALLATION INSTRUCTIONS

B372

Brutus Scence - 402035



HUBBARDTON FORGE.

MODERN AMERICAN BLACKSMITHS | FINE, HAND CRAFTED LIGHTING
CASTLETON, VERMONT USA | HUBBARDTONFORGE.COM

Component Parts

- A Fixture**
- B Front Assembly**
- C Threaded Tab**
- D Knurled Screw**
- E Mounting Bracket**
- F Ground Screw**
- G Cupped Washer**
- H #8 Screws (4)**
- I Bulbs (2) - *Included***
- J Socket (2)**



ASSEMBLY & INSTALLATION INSTRUCTIONS

B372

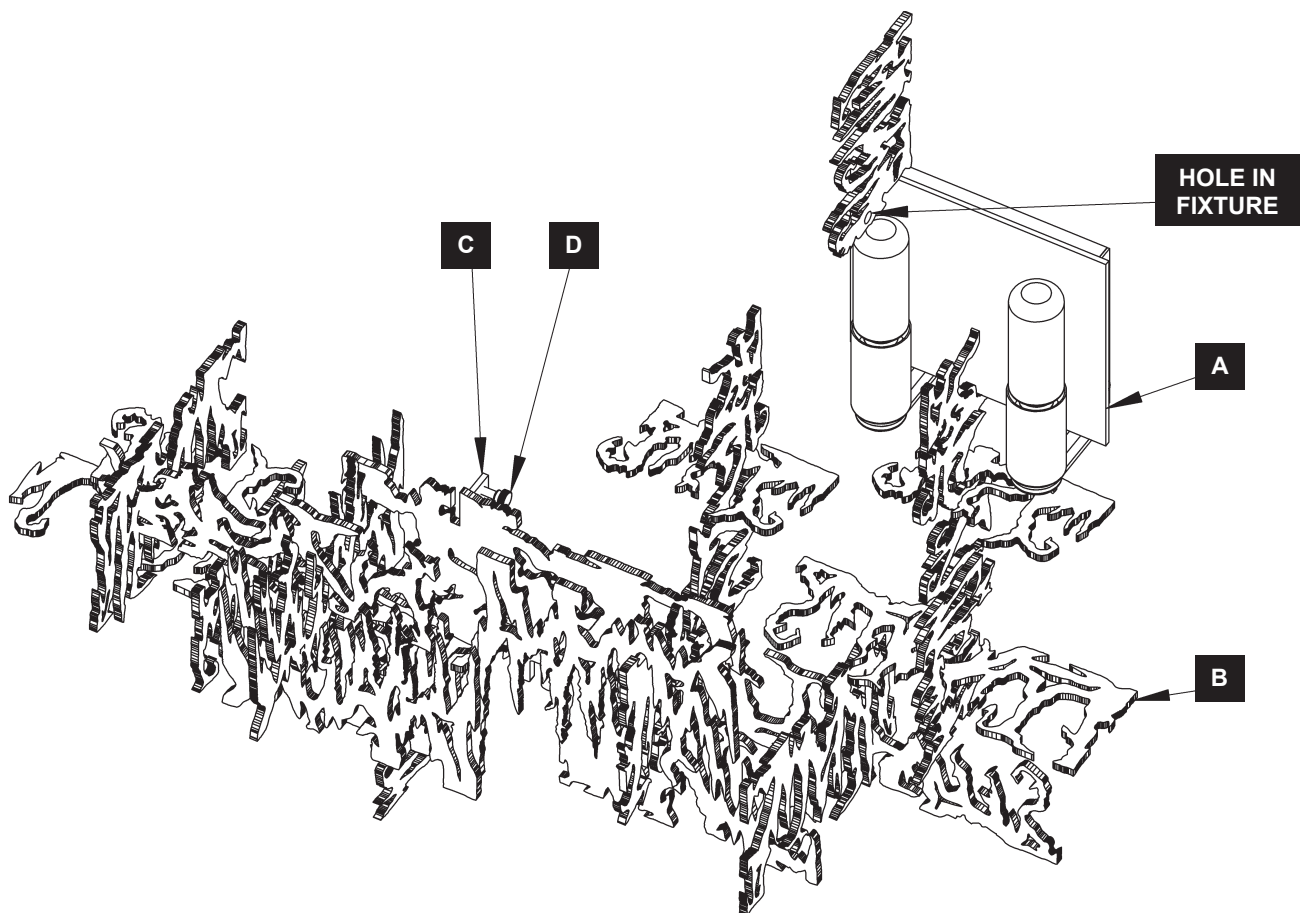
Brutus Sconce - 402035

CAUTION: FAILURE TO INSTALL THIS FIXTURE PROPERLY MAY RESULT IN SERIOUS PERSONAL INJURY OR DEATH AND PROPERTY DAMAGE. We recommend installation by a licensed electrician. This product must be installed in accordance with applicable installation code(s), by a person familiar with the construction and operation of the product and the hazards involved.*

Caution: Do not exceed maximum wattage noted on fixture. Use only recommended bulbs with fixture.

PREPARE FIXTURE FOR INSTALLATION (Figure 1)

1. Carefully unpack the fixture from the carton.
2. Loosen knurled screw (D) until it's removed from hole in fixture (A). It is not necessary to completely remove knurled screw (D) from threaded tab (C).
3. Tip out top of front assembly (B), lift up, and away from fixture (A).
4. Retain for later use.
5. Follow steps on next page to install fixture (A) to wall.



(Figure 1)

ASSEMBLY & INSTALLATION INSTRUCTIONS

B372

Brutus Sconce - 402035

TO INSTALL FIXTURE TO WALL (Figure 2)

1. Locate mounting bracket (E). Thread wires from electrical box through hole in mounting bracket while moving into position. Using two machine screws (not provided) fasten mounting bracket (E) to electrical box.

NOTE: A NEW ELECTRIC BOX COMES WITH SCREWS. WHEN REPLACING A FIXTURE, RETAIN THE EXISTING SCREWS FOR USE WITH THE NEW FIXTURE.

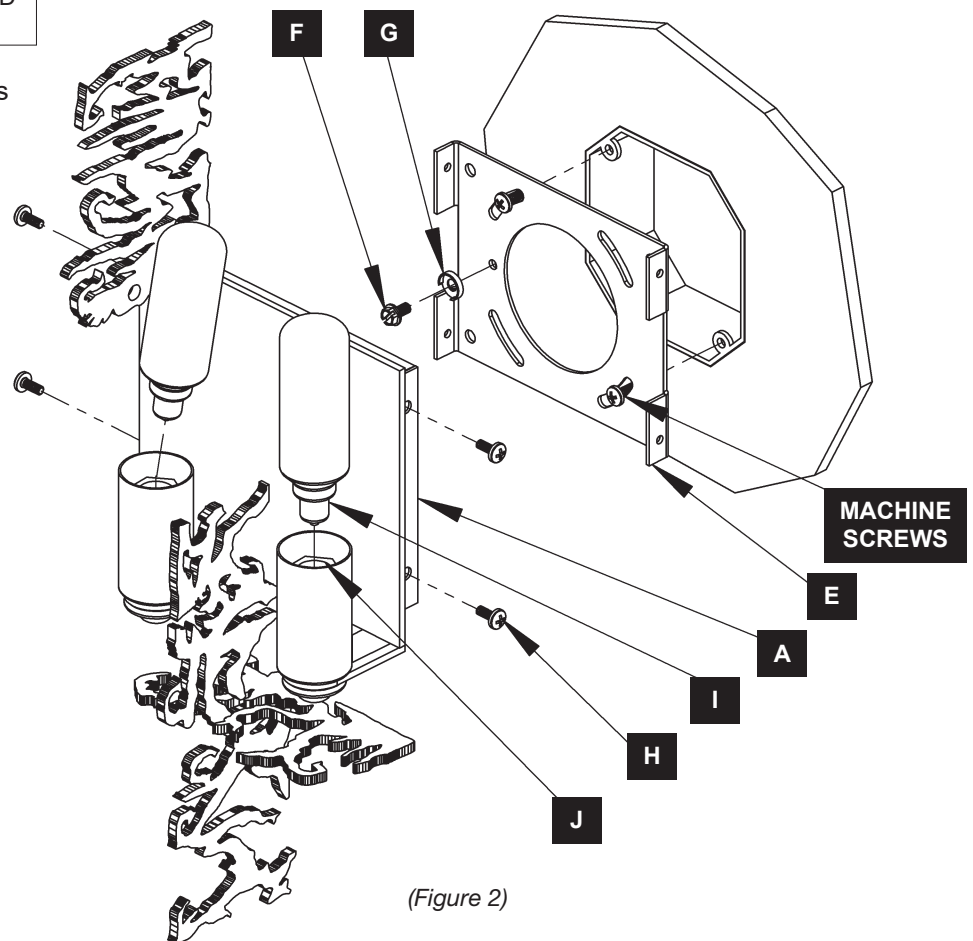
2. Attach a pigtail lead to the mounting bracket (E) using provided ground screw (F) and cupped washer (G), found in kit bag.
3. Hold fixture (A) close to mounting bracket (E) and using suitable wire connectors (not provided), connect fixture wires to supply wires (white to white and black to black). Connect all ground wires (bare copper or green to bare copper or green) together.

CAUTION: MAKE SURE WIRE CONNECTORS ARE TWISTED ON SECURELY, AND NO BARE WIRES ARE EXPOSED.

4. Carefully tuck all wires behind fixture (A) and inside mounting bracket (E).
5. Place fixture (A) firmly onto mounting bracket (E) and fasten with #8 screws (H) on each side.

CAUTION: BE SURE NO WIRES ARE PINCHED BETWEEN FIXTURE AND WALL

6. Install bulbs (I), *included*, into sockets (J).
7. Follow steps on next page to complete installation.



(Figure 2)

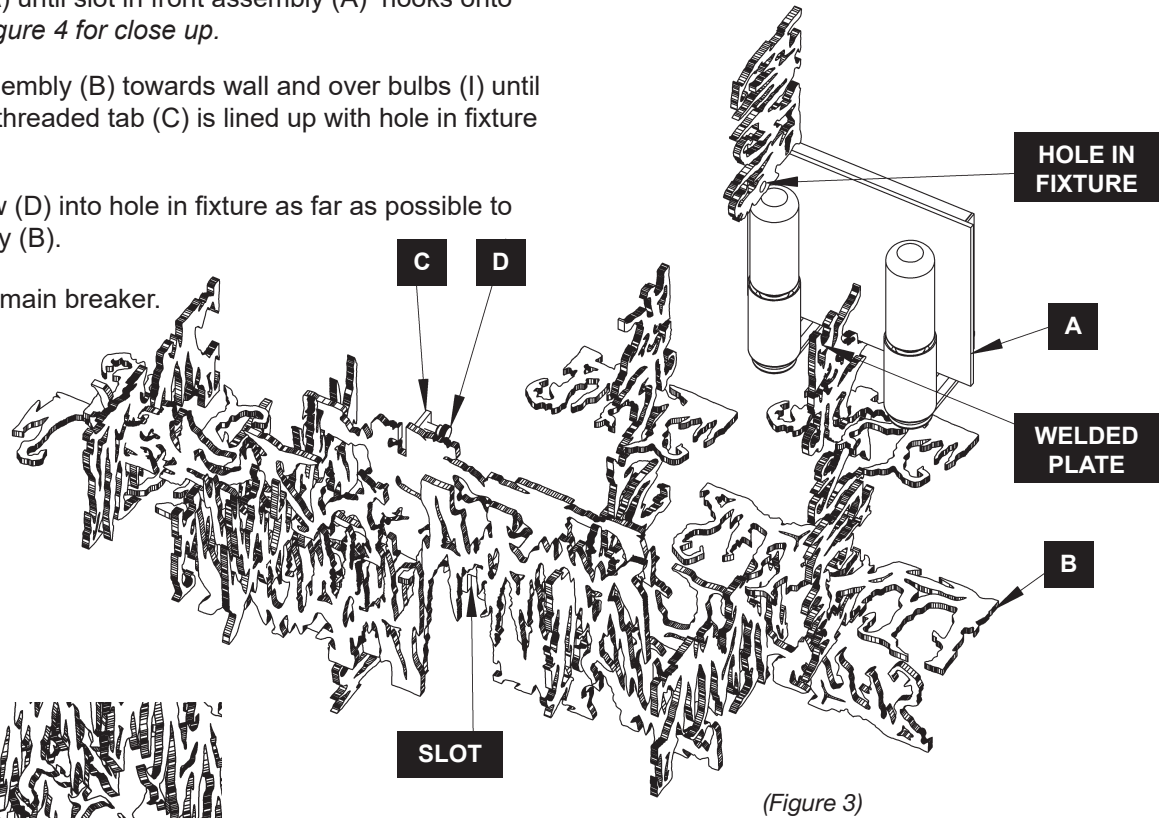
ASSEMBLY & INSTALLATION INSTRUCTIONS

B372

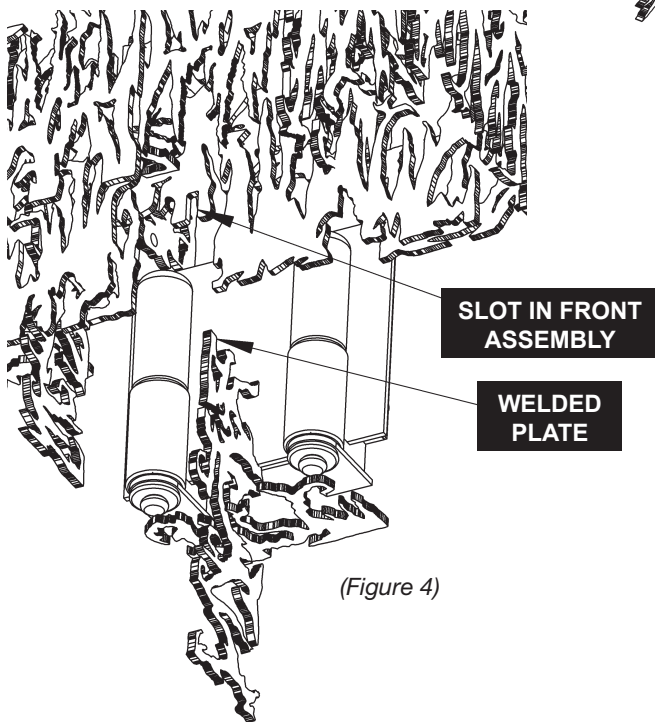
Brutus Sconce - 402035

TO COMPLETE INSTALLATION (Figures 3 & 4)

1. Angle top of front assembly (B) out, slide bottom of front assembly (B) onto fixture (A) until slot in front assembly (A) hooks onto welded plate. See Figure 4 for close up.
2. Carefully tip front assembly (B) towards wall and over bulbs (I) until knurled screw (D) in threaded tab (C) is lined up with hole in fixture (A).
3. Thread knurled screw (D) into hole in fixture as far as possible to secure front assembly (B).
4. Restore electricity at main breaker.



(Figure 3)



(Figure 4)

If you need further assistance, or find that you are missing any parts, please contact the dealer from which you purchased this product. We hope you enjoy your fixture!

*** Hubbardton Forge will not be liable for injury or damage caused by improper installation, lamping or use of this fixture.**