

ALCHEMY

30525LCB

MEDIUM MULTI TIER

Inspired by the vintage flasks of a chemistry classroom, Alchemy is a unique statement piece. Its tapered globes instantly stand out in a variety of spaces, while the open silhouette enhances its sophisticated edge.

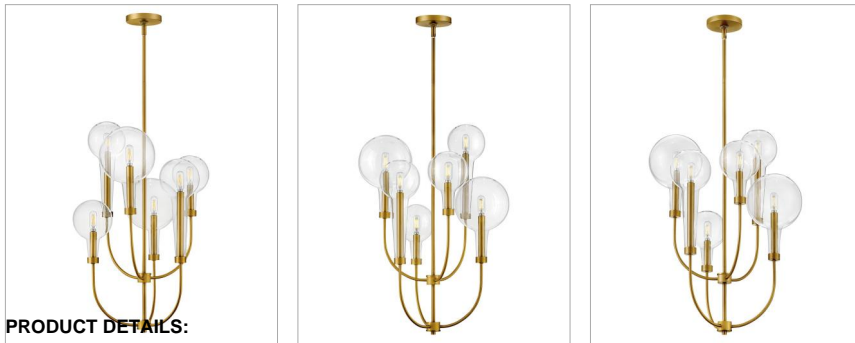
DETAILS	
FINISH:	Lacquered Brass
MATERIAL:	Steel
GLASS:	Clear
SLOPE DEGREE:	90

DIMENSIONS	
WIDTH:	20"
HEIGHT:	27.8"
WEIGHT:	3.6lb

LIGHT SOURCE	
LIGHT SOURCE:	LED Lamp
WATTAGE:	6-5w Cand. LED, 60w Equiv.
VOLTAGE:	120v

MOUNTING	
CANOPY:	4.75" Dia.
LEAD WIRE:	1 X 120"
MAX HEIGHT:	53.3

SHIPPING	
CARTON LENGTH:	22.5
CARTON WIDTH:	22.5
CARTON HEIGHT:	25.8
CARTON WEIGHT:	6.5



PRODUCT DETAILS:

- This stem hung fixture may be hung on a sloped ceiling
- This fixture includes multiple down stems in various lengths to customize the installation height, including one 6" stem and three 12" stems.
- Suitable for use in dry (indoor) locations as defined by NEC and CEC. Meets United States UL Underwriters Laboratories & CSA Canadian Standards Association Product Safety Standards
- Merging the best of traditional and modern elements, with a sophisticated and streamlined silhouette perfect for any space
- Classic gleaming light brass finish

HINKLEY

HINKLEY
33000 Pin Oak Parkway
Avon Lake, OH 44012

PHONE: (440) 653-5500
Toll Free: 1 (800) 446-5539

hinkley.com