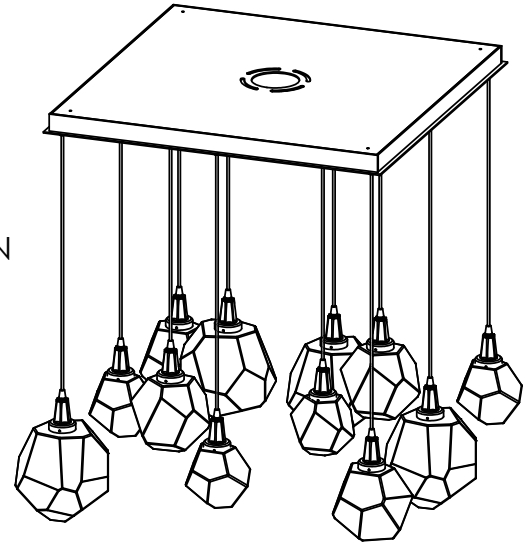
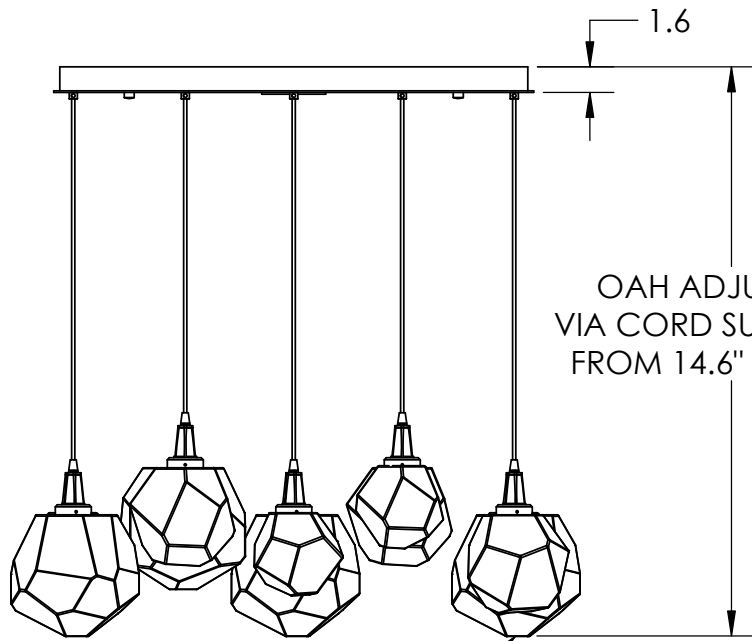
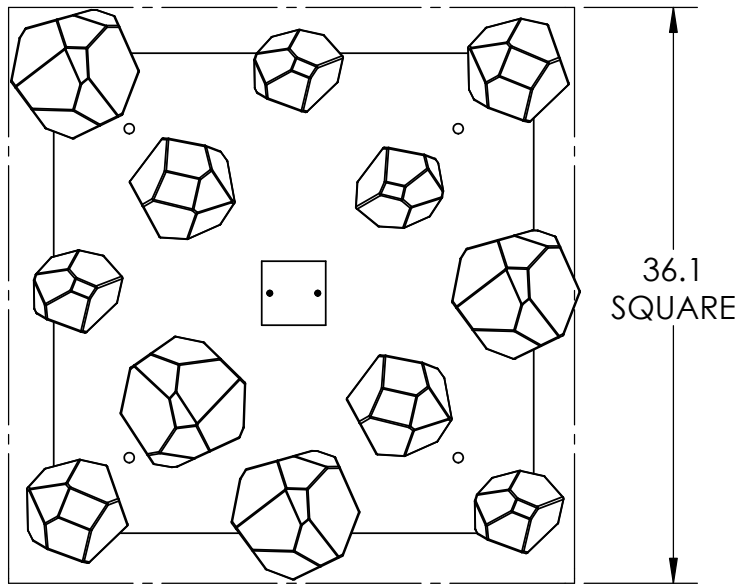


Collection: GEM

Product #: CHB0039-12

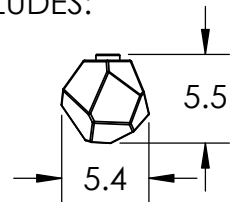


BLOWN GLASS GEMS

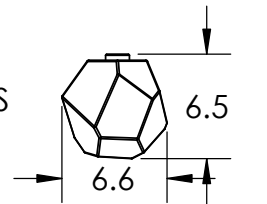


CHANDELIER INCLUDES:

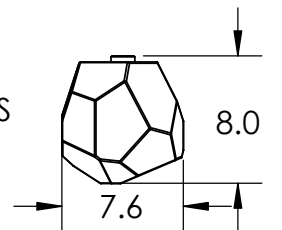
4 SMALL GEMS



4 MEDIUM GEMS



4 LARGE GEMS

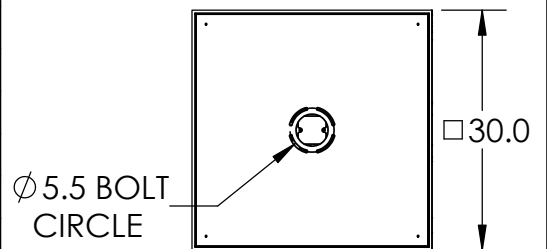


Visit hammertonstudio.com for product options and specifications.

5/25/2016 A

Mounting Packet: R	Electrical Type: LED	CCT: 2700 K
Approximate lbs.: 85	Bulb Qty: 12	Wattage: 62
Finish: SEE WEB SITE FOR OPTIONS	Source Output: 4105lm	Voltage: 120
Diffusers Top:Closed / Bottom:Glass	Forward/Reverse Phase Dimmable To 1%	
UL Location: DRY	CRI: 90+	Power Factor: >0.9

Mounting Detail



MOUNTS TO BUILDING STRUCTURE

All fixtures created by Hammerton are handcrafted by artisans. Dimensions may vary up to 7/8".

© Copyright 2015. All rights in design, detail or invention of this drawing are reserved as the property of Hammerton. Any imitation or adaptation without written consent is strictly prohibited.